

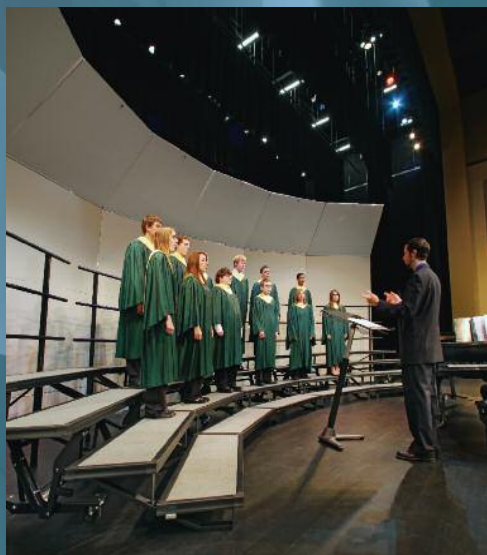


"We have several sets of Tourmaster risers, which we use in different places around campus, like the refectory, chapel or headmaster's house. We also take them off-campus. Their flexibility and mobility makes them perfect for us."

*– Robert Palmer, Chairman of Performing Arts
Avon Old Farms School, Avon, Connecticut*

Avon Old Farms School, Avon, Connecticut

STANDING RISERS



Signature® Choral Risers
Pages 118-119

The easy way to look as professional as you sound. Elegant, 3- or 4-step risers that fold and roll wherever you need them.



Tourmaster® Choral Risers
Pages 120-121

The most durable traveling riser. It easily folds, rolls, transports on a bus, truck or trailer, and goes with your group wherever you need it.



Stage Boxes
Page 126

Wenger Stage Boxes replace the homemade wooden boxes and props you've used in the past. They also work well in conjunction with flipFORMS.



flipFORMS®
Page 127

The fun, fast way to put on a performance in no time at all. flipFORMS are so versatile they can transform from a platform, to seating, to risers.



QR CODE
Snap this QR code to view our Signature setup on YouTube!



Signature® Choral Risers

Our Signature risers were designed to incorporate every meaningful advantage: classic black styling; safe, simple setup; lightweight handling; superb stability; strong, quiet performance; easy mobility; long-lasting service; an integrated backrail with safety crossbar; and a full fifteen-year warranty.

But what you might appreciate most of all is the easy-to-reverse design. You can change your riser arrangement quickly and securely. Optional siderails attach without tools. 3- and 4-step models roll easily through standard doorways.

USAGE

Choral risers that roll easily from rehearsal space to performance space

PERFORMANCE REQUIREMENTS

- Patented fold-down design allows easy one-person setup
- Integral backrail with safety crossbar
- Optional easy-to-attach siderails for extra security
- Wing-nut and locking cam-lever step mount provides the safety of bolted construction but lets you reverse steps and create new setup configurations without tools
- 3- and 4-step riser sets available

CONSTRUCTION

- Formed and welded steel construction for unparalleled stability and quiet performance
- Wing-nut step attachment design allows reversing without tools
- Sturdy, permanently attached backrails with child-height crossbar
- **15-year warranty**



*Compact footprint
Both the 3- and 4-step model fold up for compact storage and easy transportation.*

ORDERING INFORMATION

- 098D053 3-step Signature Riser, 203 lbs (92 kg)
- 098D054 4-step Signature Riser, 262 lbs (119 kg)
- 098D541 Siderail Set (2), 62 lbs (28 kg)

Quantity pricing is available

Assembly required.



Signature steps are available in grey carpet.

Signature Choral Riser 4-step model shown with optional siderails (recommended).



A Signature Choral Riser is easy for one person to roll and control.



Just maneuver it into place and unfold with a single fluid motion.



It sets up quickly and easily and provides excellent stability.



"I really like the new four-step Signature risers for the extra height, both for larger groups or smaller, narrower arrangements. They are very easy to set up, even for one person. They store compactly backstage, saving quite a bit of space."

*– Kyle Chamberlin, Choir Director,
Chapman High School, Chapman, Kansas*



Step supports are welded steel for maximum stability and strength. Backrails are permanently attached for maximum safety. Risers have stable, secure contact with the floor when in the performance position.



Our reversing design uses a simple wing-nut design for ultra-quick assembly that's as strong and stable as bolt-down connection.

Signature is designed from top rail to floor to ensure flawless operation and long-lasting good looks. The level of detail is exquisite, with carpet edges protected by structural aluminum extrusions for a finishing touch that adds both distinction and stability.



SIGNATURE CHORAL RISER SETS

Signature Choral Risers create a magnificent display when grouped in sets. Use the charts below as a general guideline when determining your needs, and please call your Wenger representative for help in making your final selection.

3-STEP SIGNATURE (098D053)		
GROUP CAPACITY*	UNITS NEEDED	SPACE REQUIRED
12-16	1	6'0" w x 4'10" d (1.8 m x 1.5 m)
24-32	2	11'10" w x 6'4" d (3.6 m x 1.9 m)
36-48	3	17'5" w x 6'3" d (5.3 m x 1.9 m)
48-64	4	22'5" w x 7'7" d (6.8 m x 2.3 m)
60-80	5	26'10" w x 9'0" d (8.2 m x 2.7 m)
72-96	6	30'7" w x 10'10" d (9.3 m x 3.3 m)
84-112	7	33'6" w x 12'9" d (10.2 m x 3.9 m)
96-128	8	35'5" w x 15'0" d (10.8 m x 4.6 m)

4-STEP SIGNATURE (098D054)		
GROUP CAPACITY*	UNITS NEEDED	SPACE REQUIRED
17-23	1	6'6" w x 6'0" d (2 m x 1.8 m)
34-46	2	12'10" w x 6'11" d (3.9 m x 2.1 m)
51-69	3	18'10" w x 7'9" d (5.7 m x 2.4 m)
68-92	4	24'3" w x 9'1" d (7.4 m x 2.8 m)
85-115	5	29'1" w x 10'6" d (8.9 m x 3.2 m)
102-138	6	33'1" w x 12'4" d (10.1 m x 3.8 m)
119-161	7	36'2" w x 14'4" d (11 m x 4.4 m)
136-184	8	38'4" w x 16'6" d (11.7 m x 5 m)

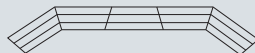
*First number indicates how many high school students will fit on a riser set if all students stand shoulder to shoulder. Second number indicates how many students will fit on a riser set if they are all facing center with shoulders overlapping. Numbers include a row of students standing on the floor. Adult groups should use lower number.

RISER REVERSIBILITY

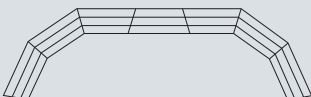
Wenger makes it easy to change riser arrangements by simply switching the position of the steps on the frame. You can configure Signature® and Tourmaster® into straight, winged, horseshoe, or semicircular designs that are every bit as secure as the original position.



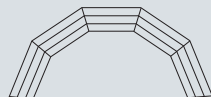
For a straight arrangement, alternate reversed riser units with regular units.



For a winged arrangement, reverse only the center unit.



For a horseshoe arrangement, reverse the center unit and add three regular units to each end.



For a semicircular arc, place regular units end to end.

SIGNATURE® CHORAL RISERS



Pinkerton Academy, Derry, New Hampshire

RESOURCES

Companion Product:

Legacy Acoustical Shells
pages 110-113



Literature available:

(call or download from the web)



Product Sheet, Tech Sheet and DVD

Web link:

www.wengercorp.com/platforms



Four 3-step risers shown with optional backrails and siderails sets (recommended).

Tourmaster® Choral Risers

No other risers fold, roll, set up, or travel so smoothly. In fact, it's easy to take it around tight corners, across the parking lot, into a bus or a van. No wonder it's the #1 choral riser in the world.

Precision engineering and using only the best materials means Tourmaster risers will deliver reliable operation for a long, long time. It ensures that Tourmaster Choral Risers are definitely your best traveling riser value.

USAGE

Traveling choral risers that are durable and easy to move

PERFORMANCE REQUIREMENTS

- Durable carpeted plywood steps in both 18" (46 cm) and 24" (61 cm) depth (24" option offers extra space for choirs that hold their music.)
- Steps can be reversed to create different configurations (tools required)
- Optional 4th-step, backrails and siderails available

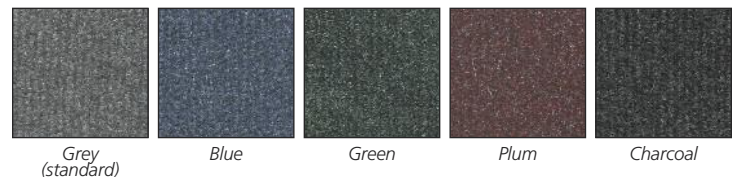
CONSTRUCTION

- Steel frame with heavy-duty wheels and built-in stair glides stands up to years of use
- 3-step models in 4' (1.2 m), 4' 7" (1.4 m) and 6' (1.8 m) lengths.
- 2-step model in 5' 6" (1.7 m) length (Call for information and pricing)
- Some assembly required
- **15-year warranty**

ORDERING INFORMATION

- 024H657 6' (1.8 m) 3-step, 18" (46 cm) step, Riser, 130 lbs (59 kg)
- 024H667 6' (1.8 m) 4th-step Addition, 55 lbs (24.9 kg)
- 024E778 6' (1.8 m) Backrail, 31 lbs (14.1 kg)
- 024F950 Cart for 6' (1.8 m) Riser, 18" (46 cm) step, 166 lbs (75 kg)
- 024H642 4' (1.2 m) 3-step, 18" (46 cm) step, Riser, 103 lbs (46.7 kg)
- 024H652 4' (1.2 m) 4th-step Addition, 45 lbs (20.4 kg)
- 024E763 4' (1.2 m) Backrail, 24 lbs (10.9 kg)
- 024F951 Cart for 4' (1.2 m) Riser, 18" (46 cm) step, 160 lbs (73 kg)
- 024H672 4'7" (1.4 m) 3-step, 24" (61 cm) step Riser, 127 lbs (58 kg)
- 024H682 4'7" (1.4 m) 4th-step Addition, 54 lbs (25 kg)
- 024E763 4' (1.2 m) Backrail, 24 lbs (10.9 kg)
- 024F952 Cart for 4' (1.2 m) Riser, 24" (61 cm) step, 166 lbs (75 kg)
- 024F017 Siderails Set (2), 48 lbs (22 kg)

Note: Siderails work on all sizes. 4th step needs to be removed for storage.



Grey (standard)

Blue

Green

Plum

Charcoal

STORAGE

- Folds and stacks on our carts (page 121) to save storage space

TOURMASTER® CHORAL RISER SETS

Tourmaster Choral Risers come in sets to match the needs of any size group. Use the charts below as a general guideline, and please call your Wenger representative for help in determining what makes the most sense for your situation, today and tomorrow.

18" (46 cm) 3-STEP 6' (1.8 M) TOURMASTER SETS		
GROUP CAPACITY*	UNITS NEEDED	SPACE REQUIRED
12-16	1	6'0" w x 4'7" d (1.8 m x 1.4 m)
24-32	2	11'10" w x 5'5" d (3.6 m x 1.7 m)
36-48	3	17'5" w x 6'1" d (5.3 m x 1.9 m)
48-64	4	22'5" w x 7'7" d (6.8 m x 2.3 m)
60-80	5	26'10" w x 8'10" d (8.2 m x 2.7 m)
72-96	6	30'7" w x 10'10" d (9.3 m x 3.3 m)
84-112	7	33'5" w x 12'7" d (10.2 m x 3.8 m)
96-128	8	35'5" w x 15'2" d (10.8 m x 4.6 m)

18" (46 cm) 4-foot (1.2 m), 4th-step addition will add space for 3-4 performers per unit. 24" (61 cm), 4th-step addition will add space for 3-4 performers per unit. 18" (46 cm) 6-foot (1.8 m), 4th-step addition will add space for 4-5 performers per unit.

18" (46 cm) 3-STEP 4' (1.2 M) TOURMASTER SETS		
GROUP CAPACITY*	UNITS NEEDED	SPACE REQUIRED
8-12	1	4'3" w x 4'8" d (1.3 m x 1.4 m)
16-24	2	8'6" w x 5'0" d (2.6 m x 1.5 m)
24-36	3	12'7" w x 5'4" d (3.8 m x 1.6 m)
32-48	4	16'8" w x 6'1" d (5.1 m x 1.9 m)
40-60	5	20'4" w x 6'8" d (6.2 m x 2 m)
48-72	6	23'10" w x 7'8" d (7.3 m x 2.3 m)
56-84	7	27'0" w x 8'8" d (8.2 m x 2.6 m)
64-96	8	30'0" w x 9'11" d (9.1 m x 3 m)

*First number indicates how many performers will fit on a riser set if all performers stand shoulder to shoulder. Second number indicates how many performers will fit on a riser set if they are all facing center with shoulders overlapping. Numbers include a row of performers standing on the floor. Adult groups should use the lower capacity number.

24" (61 cm) 3-STEP 4'7" (1.4 M) TOURMASTER SETS		
GROUP CAPACITY*	UNITS NEEDED	SPACE REQUIRED
8-12	1	4'7" w x 6'2" d (1.4 m x 1.9 m)
16-24	2	9'2" w x 6'6" d (2.8 m x 2.0 m)
24-36	3	13'6" w x 6'10" d (4.1 m x 2.1 m)
32-48	4	17'10" w x 7'7" d (5.6 m x 2.3 m)
40-60	5	21'10" w x 8'2" d (6.7 m x 2.5 m)
48-72	6	25'8" w x 9'3" d (7.8 m x 2.8 m)
56-84	7	29'2" w x 10'2" d (8.9 m x 3.1 m)
64-96	8	32'3" w x 11'6" d (9.8 m x 3.5 m)

TOURMASTER SETS UP IN JUST SECONDS.



Tourmaster Choral Riser units roll smoothly through hallways, around tight corners, and up and down stairways.



Each unit quickly unfolds accordion-style.



Step on the frame and pull the riser toward you to raise it to the upright position.



Optional safety backrails and siderails attach quickly and securely without tools.



“Our 40-voice choir purchased five Tourmaster risers almost 30 years ago. I don’t see any reason why they won’t last virtually forever. Overall we have been very happy with them. Setting the risers up onstage is an easy, one-person job and they lock together very nicely.”

*– Steve Fowler,
Occidental Community
Choir, Occidental,
California*



TOURMASTER CHORAL RISER MOVE & STORE CARTS

Move and store your riser sets wherever you need them. Each cart holds up to four risers, plus backrails and 4th-step additions. Built for maneuverability, with swing arms to facilitate loading and unloading.

TOURMASTER® CHORAL RISERS



Cork School of Music, Cork, Ireland

RISER REVERSIBILITY

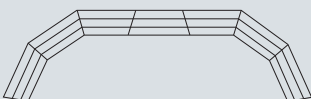
Wenger makes it easy to change riser arrangements by simply switching the position of the steps on the frame. You can configure Signature® and Tourmaster® into straight, winged, horseshoe, or semicircular designs that are every bit as secure as the original position.



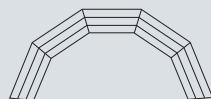
For a straight arrangement, alternate reversed riser units with regular units.



For a winged arrangement, reverse only the center unit.



For a horseshoe arrangement, reverse the center unit and add three regular units to each end.

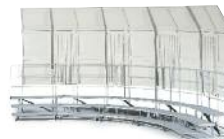


For a semicircular arc, place regular units end to end.

RESOURCES

Companion Product:

Travelmaster Acoustical Shells pages 114-115



Literature available:

(call or download from the web)



Product Sheet, Tech Sheet and DVD

Web link:

www.wengercorp.com/platforms