



"I've used only Wenger choral risers since I started teaching more than 30 years ago. As far as I'm concerned, there is no competition."

*– Richard Hardin, Choir Director
Carl Stuart Middle School
Conway, Arkansas*

West Orange High School, Winter Garden, Florida. Universal Orlando, Orlando, Florida

STANDING RISERS



Signature® Choral Risers
Pages 108-109

The easy way to look as professional as you sound. Elegant, 3- or 4-step risers that fold and roll wherever you need them.



Tourmaster® Choral Risers
Pages 110-111

The most durable traveling riser. It easily folds, rolls, transports on a bus, truck or trailer, and goes with your group wherever you need it.



Stage Boxes
Page 116

Wenger Stage Boxes replace the homemade wooden boxes and props you've used in the past. They also work well in conjunction with flipFORMS.



flipFORMS®
Page 117

The fun, fast way to put on a performance in no time at all. flipFORMS are so versatile they can transform from a platform, to seating, to risers.



Signature® Choral Risers

Our Signature risers were designed to incorporate every meaningful advantage: classic black styling; safe, simple setup; lightweight handling; superb stability; strong, quiet performance; easy mobility; long-lasting service; an integrated backrail with safety crossbar; and a full five-year warranty.

But what you might appreciate most of all is the easy-to-reverse design. You can change your riser arrangement quickly and securely. Optional siderails attach without tools. 3- and 4-step models roll easily through standard doorways.

USAGE

Choral risers that roll easily from rehearsal space to performance space

PERFORMANCE REQUIREMENTS

- Patented fold-down design allows easy one-person setup
- Integral backrail with safety crossbar
- Optional easy-to-attach siderails for extra security
- Wing-nut and locking cam-lever step mount provides the safety of bolted construction but lets you reverse steps and create new setup configurations without tools
- 3- and 4-step riser sets available

CONSTRUCTION

- Durable carpeted plywood steps in 18" (46 cm) depth
- Special kit converts 3-step model to 4-step model

STORAGE

- Compact footprint for easy storage



Compact footprint
Both the 3- and 4-step model fold up for compact storage and easy transportation.

ORDERING INFORMATION

- 098B003 3-step Signature Riser, 192 lbs. (87 kg.)
- 098B004 4-step Signature Riser, 258 lbs. (117 kg.)
- 098B016 4th-step Addition Kit,* 65 lbs. (29.4 kg.)
- *4th-step Addition is not removable after installation.
- 098B007 Siderail Set (2), 56 lbs. (25.4 kg.)

Quantity pricing is available

Some assembly required.



Signature steps are available in grey carpet.

Signature Choral Riser 4-step model shown with optional siderails (recommended).



A Signature Choral Riser is easy for one person to roll and control.



Just maneuver it into place and unfold with a single fluid motion.



It sets up quickly and easily and provides excellent stability.



Signature's step attachment design uses a simple wing-nut and locking cam-lever that's as strong and stable as bolted construction, yet offers ultra-quick step reversibility without tools.



Carefully designed from top-rail to floor to ensure flawless operation and long-lasting good looks. Signature's level of detail is exquisite, with carpet edges protected by structural extrusions for a distinctive touch that also prevents tripping.



Count on unparalleled stability and Wenger durability – while loading, unloading, and all through active performances – thanks to Signature Choral Riser's rugged single-piece cast-aluminum design.



"I've used Wenger risers for my entire teaching career – at least 25 years. I like these Signature risers the best because they are so easy to set up."

– Cydney Dixon, Band Director
Lower Lake High School, Lower Lake, California

SIGNATURE CHORAL RISER SETS

Signature Choral Risers create a magnificent display when grouped in sets. Use the charts below as a general guideline when determining your needs, and please call your Wenger representative for help in making your final selection.

3-STEP SIGNATURE (098B003)		
GROUP CAPACITY*	UNITS NEEDED	SPACE REQUIRED
12-16	1	6'0" w x 4'10" d (1.8 m x 1.5 m)
24-32	2	11'10" w x 6'4" d (3.6 m x 1.9 m)
36-48	3	17'5" w x 6'3" d (5.3 m x 1.9 m)
48-64	4	22'5" w x 7'7" d (6.8 m x 2.3 m)
60-80	5	26'10" w x 9'0" d (8.2 m x 2.7 m)
72-96	6	30'7" w x 10'10" d (9.3 m x 3.3 m)
84-112	7	33'6" w x 12'9" d (10.2 m x 3.9 m)
96-128	8	35'5" w x 15'0" d (10.8 m x 4.6 m)

4-STEP SIGNATURE (098B004)		
GROUP CAPACITY*	UNITS NEEDED	SPACE REQUIRED
17-23	1	6'6" w x 6'0" d (2 m x 1.8 m)
34-46	2	12'10" w x 6'11" d (3.9 m x 2.1 m)
51-69	3	18'10" w x 7'9" d (5.7 m x 2.4 m)
68-92	4	24'3" w x 9'1" d (7.4 m x 2.8 m)
85-115	5	29'1" w x 10'6" d (8.9 m x 3.2 m)
102-138	6	33'1" w x 12'4" d (10.1 m x 3.8 m)
119-161	7	36'2" w x 14'4" d (11 m x 4.4 m)
136-184	8	38'4" w x 16'6" d (11.7 m x 5 m)

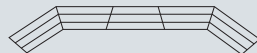
*First number indicates how many high school students will fit on a riser set if all students stand shoulder to shoulder. Second number indicates how many students will fit on a riser set if they are all facing center with shoulders overlapping. Numbers include a row of students standing on the floor. Adult groups should use lower number.

RISER REVERSIBILITY

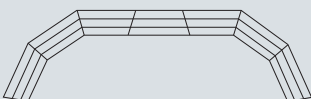
Wenger makes it easy to change riser arrangements by simply switching the position of the steps on the frame. You can configure Signature® and Tourmaster® into straight, winged, horseshoe, or semicircular designs that are every bit as secure as the original position.



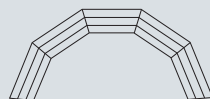
For a straight arrangement, alternate reversed riser units with regular units.



For a winged arrangement, reverse only the center unit.



For a horseshoe arrangement, reverse the center unit and add three regular units to each end.



For a semicircular arc, place regular units end to end.

SIGNATURE® CHORAL RISERS



Lower Lake High School, Lower Lake, California

RESOURCES

Companion Product:

Legacy Acoustical Shells
pages 102-103



Literature available:

(call or download from the web)



Product Sheet, Tech Sheet and DVD



Web link:

www.wengercorp.com/platforms



Four 3-step risers shown with optional backrails and siderail sets (recommended).

Tourmaster® Choral Risers

No other risers fold, roll, set up, or travel so smoothly. In fact, it's easy to take it up stairs, around tight corners, across the parking lot, into a bus or a van. No wonder it's the #1 choral riser in the world.

Precision engineering and using only the best materials means Tourmaster risers will deliver reliable operation for a long, long time. It ensures that Tourmaster choral risers are definitely your best traveling riser value.

USAGE

Traveling choral risers that are durable and easy to move

PERFORMANCE REQUIREMENTS

- Durable carpeted plywood steps in both 18" (46 cm) and 24" (61 cm) depth (24" option offers extra space for choirs that hold their music.)
- Steps can be reversed to create different configurations (tools required)
- Optional 4th-step, backrails and siderails available

CONSTRUCTION

- Steel frame with heavy-duty wheels and built-in stair glides stands up to years of use
- Silent Lift Assist provides assistance when pulling riser into upright position
- 3-step models in 4' (1.2 m), 4' 7" (1.4 m) and 6' (1.8 m) lengths.
- 2-step model in 5' 6" (1.7 m) length (Call for information and pricing)
- Some assembly required

STORAGE

- Folds and stacks on our carts (page 111) to save storage space

ORDERING INFORMATION

- 024G657 6' (1.8 m) 3-step, 18" (46 cm) step, Riser, 130 lbs. (59 kg.).
- 024G667 6' (1.8 m) 4th-step Addition, 55 lbs. (24.9 kg.).
- 024G778 6' (1.8 m) Backrail, 31 lbs. (14.1 kg.).
- 024F950 Cart for 6' (1.8 m) Riser, 18" (46 cm) step, 166 lbs. (75 kg.)
- 024G642 4' (1.2 m) 3-step, 18" (46 cm) step, Riser, 103 lbs. (46.7 kg.).
- 024G652 4' (1.2 m) 4th-step Addition, 45 lbs. (20.4 kg.).
- 024E763 4' (1.2 m) Backrail, 24 lbs. (10.9 kg.).
- 024F951 Cart for 4' (1.2 m) Riser, 18" (46 cm) step, 160 lbs. (73 kg.)
- 024G672 4'7" (1.4 m) 3-step, 24" (61 cm) step Riser, 127 lbs. (58 kg.).
- 024G682 4'7" (1.4 m) 4th-step Addition, 54 lbs. (25 kg.).
- 024E763 4' (1.2 m) Backrail, 24 lbs. (10.9 kg.).
- 024F952 Cart for 4' (1.2 m) Riser, 24" (61 cm) step, 166 lbs. (75 kg.)
- 024F017 Siderails Set (2), 48 lbs. (22 kg.).
- 024F443 Lift Assist Accessory Kit

Note: Siderails work on all sizes. 4th step needs to be removed for storage. Lift Assist is standard on all new units. The Lift Accessory Kit allows you to add the Lift Assist to any Tourmaster Risers you already own.



Grey (standard) Blue Green Plum Charcoal



"We have several sets of Tourmaster risers, which we use in different places around campus. We also take them off-campus. Their flexibility and mobility makes them perfect for us."

– Robert Palmer, Chairman of Performing Arts
Avon Old Farms School, Avon, Connecticut

TOURMASTER® CHORAL RISER SETS

Tourmaster Choral Risers come in sets to match the needs of any size group. Use the charts below as a general guideline, and please call your Wenger representative for help in determining what makes the most sense for your situation, today and tomorrow.

18" (46 cm) 3-STEP 6' (1.8 M) TOURMASTER SETS		
GROUP CAPACITY*	UNITS NEEDED	SPACE REQUIRED
12-16	1	6'0" w x 4'7" d (1.8 m x 1.4 m)
24-32	2	11'10" w x 5'5" d (3.6 m x 1.7 m)
36-48	3	17'5" w x 6'1" d (5.3 m x 1.9 m)
48-64	4	22'5" w x 7'7" d (6.8 m x 2.3 m)
60-80	5	26'10" w x 8'10" d (8.2 m x 2.7 m)
72-96	6	30'7" w x 10'10" d (9.3 m x 3.3 m)
84-112	7	33'5" w x 12'7" d (10.2 m x 3.8 m)
96-128	8	35'5" w x 15'2" d (10.8 m x 4.6 m)

18" (46 cm) 4-foot (1.2 m), 4th-step addition will add space for 3-4 performers per unit. 24" (61 cm), 4th-step addition will add space for 3-4 performers per unit. 18" (46 cm) 6-foot (1.8 m), 4th-step addition will add space for 4-5 performers per unit.

18" (46 cm) 3-STEP 4' (1.2 M) TOURMASTER SETS		
GROUP CAPACITY*	UNITS NEEDED	SPACE REQUIRED
8-12	1	4'3" w x 4'8" d (1.3 m x 1.4 m)
16-24	2	8'6" w x 5'0" d (2.6 m x 1.5 m)
24-36	3	12'7" w x 5'4" d (3.8 m x 1.6 m)
32-48	4	16'8" w x 6'1" d (5.1 m x 1.9 m)
40-60	5	20'4" w x 6'8" d (6.2 m x 2 m)
48-72	6	23'10" w x 7'8" d (7.3 m x 2.3 m)
56-84	7	27'0" w x 8'8" d (8.2 m x 2.6 m)
64-96	8	30'0" w x 9'11" d (9.1 m x 3 m)

*First number indicates how many performers will fit on a riser set if all performers stand shoulder to shoulder. Second number indicates how many performers will fit on a riser set if they are all facing center with shoulders overlapping. Numbers include a row of performers standing on the floor. Adult groups should use the lower capacity number.

24" (61 cm) 3-STEP 4'7" (1.4 M) TOURMASTER SETS		
GROUP CAPACITY*	UNITS NEEDED	SPACE REQUIRED
8-12	1	4'7" w x 6'2" d (1.4 m x 1.9 m)
16-24	2	9'2" w x 6'6" d (2.8 m x 2.0 m)
24-36	3	13'6" w x 6'10" d (4.1 m x 2.1 m)
32-48	4	17'10" w x 7'7" d (5.6 m x 2.3 m)
40-60	5	21'10" w x 8'2" d (6.7 m x 2.5 m)
48-72	6	25'8" w x 9'3" d (7.8 m x 2.8 m)
56-84	7	29'2" w x 10'2" d (8.9 m x 3.1 m)
64-96	8	32'3" w x 11'6" d (9.8 m x 3.5 m)

TOURMASTER SETS UP IN JUST SECONDS.



Tourmaster Choral Riser units roll smoothly through hallways, around tight corners, and up and down stairways.



Each unit quickly unfolds accordion-style.



Step on the frame and pull the riser towards you to raise it to the upright position.



Optional safety backrails and siderails attach quickly and securely without tools.



TOURMASTER CHORAL RISER MOVE & STORE CARTS

Move and store your riser sets wherever you need them. Each cart holds up to four risers, plus backrails and 4th-step additions. Built for maneuverability, with swing arms to facilitate loading and unloading.



New updated design makes it even easier for just about anyone to use! The **Lift Assist** provides mechanical assistance when pulling the riser into an upright position and lowering for storage on three-step units.



Easy takedown – just press foot-pedal release, push, and let down.

RISER REVERSIBILITY

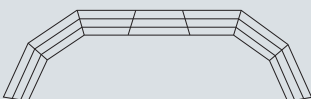
Wenger makes it easy to change riser arrangements by simply switching the position of the steps on the frame. You can configure Signature® and Tourmaster® into straight, winged, horseshoe, or semicircular designs that are every bit as secure as the original position.



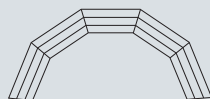
For a straight arrangement, alternate reversed riser units with regular units.



For a winged arrangement, reverse only the center unit.



For a horseshoe arrangement, reverse the center unit and add three regular units to each end.



For a semicircular arc, place regular units end to end.

TOURMASTER® CHORAL RISERS



Universal Orlando, Orlando, Florida

RESOURCES

Companion Product:

Travelmaster Acoustical Shells pages 104-105



Literature available:

(call or download from the web)



Product Sheet, Tech Sheet and DVD

Web link:

www.wengercorp.com/platforms