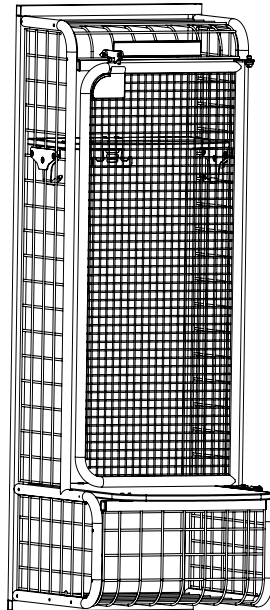
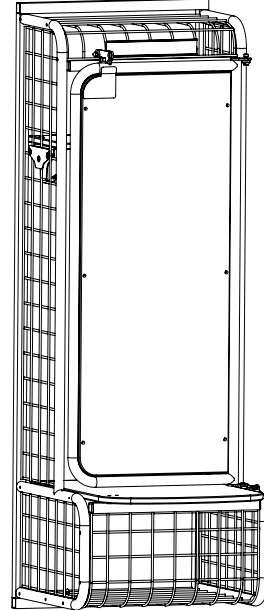


Grille Door



Wood Door



Note: Please read and understand the AirPro Locker Door Accessory Owner's Manual before attempting installation, assembly, or use.

Note: Remove all items from the shipping containers and sort the components by type, size, etc. Refer to the illustrations on the following pages. If you need additional information about your AirPro Locker Door Accessory, contact the Wenger Corporation using the information listed below.

WARRANTY

The GearBoss AirPro Locker Door Accessory is guaranteed free of defects in materials and workmanship for five full years.

Our guarantee assures you of either a full refund or repair or replacement of the defective materials or workmanship without charge, at the discretion of our Customer Service Department. Just call a Customer Service Representative at 1-800-887-7145 and state the reason you are dissatisfied. If a product return is necessary, your representative will issue a return authorization. This is your sole remedy for breach of this warranty.

Should you have a question or problem with any Wenger product, don't hesitate to call, even if the product is past warranty. It's important to us that all our customers be satisfied.

This is the sole warranty made by Wenger. Wenger disclaims all other warranties, including the warranties of merchantability and fitness for a particular purpose, as well as all liability for incidental, consequential, special, and indirect damage. Wenger liability for direct damages shall be limited to the amount you paid for the product involved. Wenger reserves the right to make product changes without obligation to incorporate such changes into products previously sold.

Some states do not allow the exclusion or limitation of damages or warranties, so the above may not apply to you. This warranty gives you specific legal rights. You may also have other rights which vary from state to state.

SAFETY

BEFORE YOU BEGIN

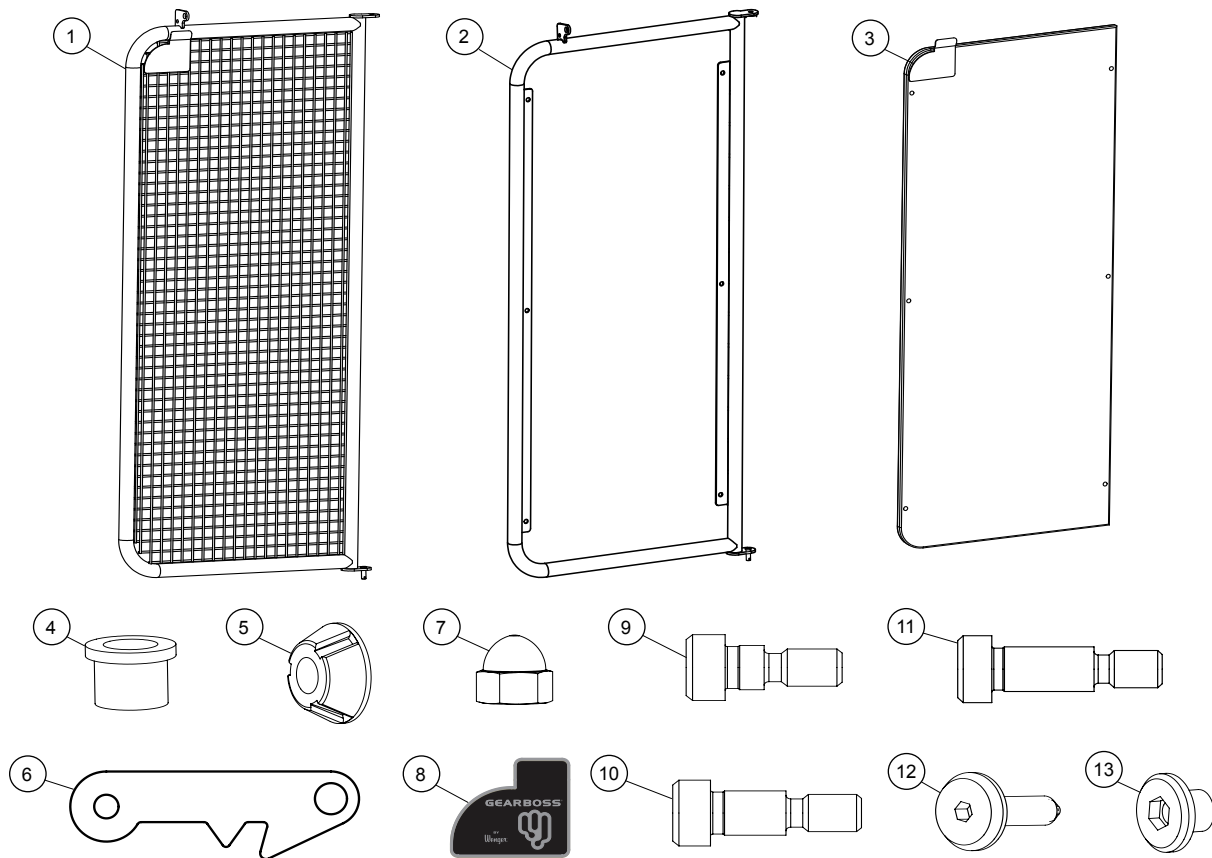
Read the complete assembly procedure before you start to install the AirPro Locker Door .

Two people are recommended for the installation of the AirPro Locker Door .

REQUIRED TOOLS

- 4 mm Hex Wrench
- 1/4" Hex Wrench
- 3/16" Hex Wrench
- 1/2" Combination Wrench
- Mallet

PARTS LIST



Item	Qty	Description
1	1	GRILLE DOOR
2	1	WOOD DOOR FRAME
3	1	WOOD DOOR PANEL
4	1	FLANGE BEARING, 1/2 OD X 3/8 ID
5	1	TAMPER NUT, 5/16-18
6	1	DOOR LOCK PIVOT PLATE

Item	Qty	Description
7	2	CAP HEX NUT, 5.16-18
8	1	GEARBOSS DECAL
9	1	SHOULDER BOLT, 5/16-18 X 1/4"
10	1	SHOULDER BOLT, 5/16-18 X 1/2"
11	1	SHOULDER BOLT, 5/16-18 X 3/4"
12	6	MACHINE SCREW, 1/4-20 X .708
13	6	SOCKET HEX CAP NUT, 1/4-20

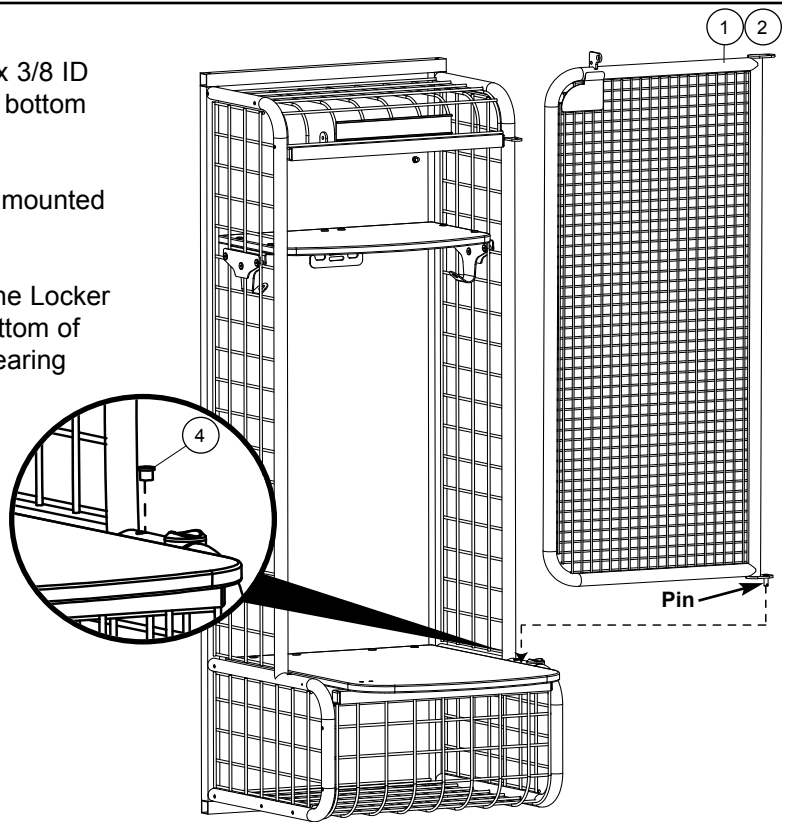
DOOR INSTALLATION

Grille Door Assembly

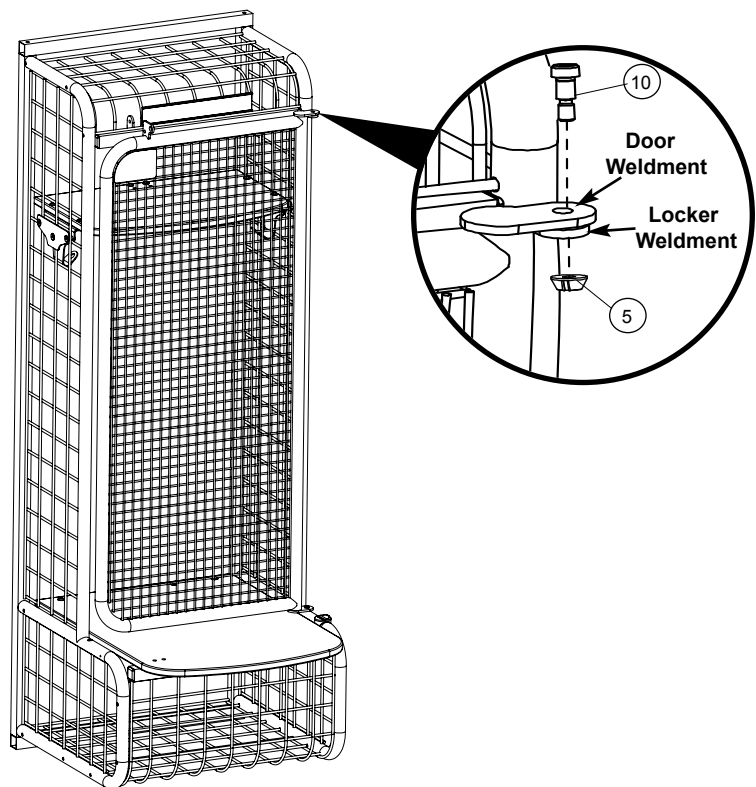
1. Insert the Flange Bearing, 1/2 OD x 3/8 ID (#4) into the pre-drilled hole on the bottom of the Locker Frame.

Note: The Locker Door will always be mounted on the right side of the locker.

- 2.. Position the Grille Door (#1) onto the Locker inserting the pin, located at the bottom of the Door Frame, into the Flange Bearing (#4).



- 3.. At the top of the Locker, align the Door weldment with the Locker Weldment.
4. Insert Shoulder Bolt, 5/16-18 x 1/2" (#10) through the top of the aligned weldment holes.
5. Secure the Shoulder Bolt (#10) using tamper nut, 5/16-18 (#5). Tighten the Shoulder Bolt.



DOOR INSTALLATION (CONTINUED)

- At the top of the Locker, align the smaller hole (furthest from the cutout) on the Door Lock Pivot Plate (#6) with the Locker Weldment hole.

Note: Make sure the Door Lock Pivot Plate is located on the right side of the Locker Weldment.

- Insert Shoulder Bolt, 5/16-18 x 1/4" (#9) through the Door Lock Pivot Plate (#6) and Locker Weldment aligned holes.

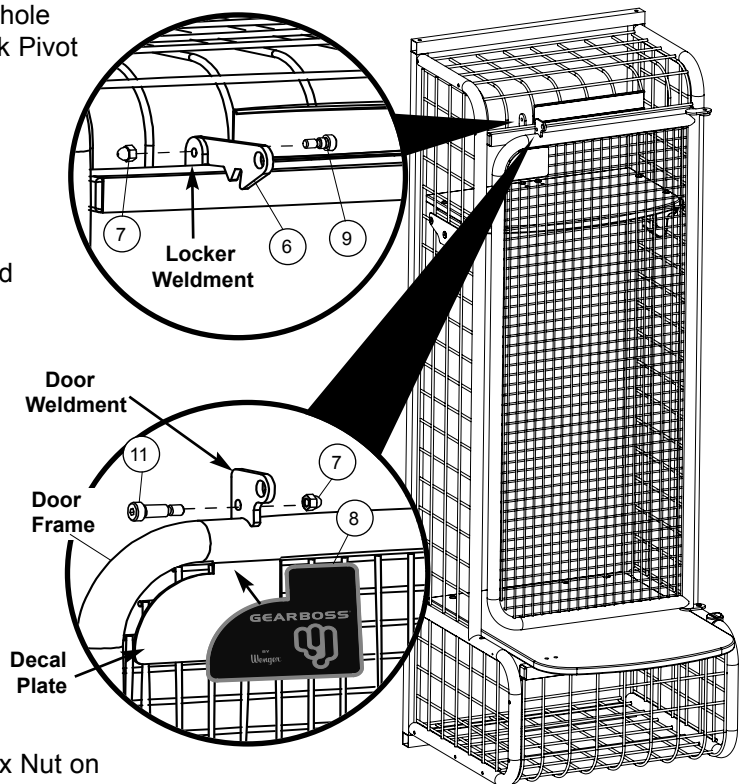
- Secure the Shoulder Bolt (#9) using Cap Hex Nut, 5/16-18 (#7). Tighten the Shoulder Bolt.

- At the top of the Door Frame insert Shoulder Bolt, 5/16-18 x 3/4" (#11) through the smaller hole Door Weldment closest to the Frame.

- Secure the Shoulder Bolt (#10) using Cap Hex Nut, 5/16-18 (#7). Tighten the Shoulder Bolt.

Note: Shoulder Bolt head must be to the left side of the locker with the Cap Hex Nut on the right side.

- Adhere GearBoss Decal (#8) to the Decal Plate.



Wood Door Assembly

- Complete Steps 1-10 to assemble the Wood Door Frame (#2) to the Locker.
- Open the door to allow access to the inside of the door.
- Hold the Wood Door Panel (#3) against the Door Frame (#2).
- Insert the six Socket Hex Cap Nuts, 1/4-20 (#13) through the Door Frame Plate and into the Wood Door Panel.
- Secure the Wood Door Panel to the Door Frame using six Machine Screws, 1/4-20 x .708 (#12).
- Adhere GearBoss Decal (#8) to the Wood Door Panel (#3).

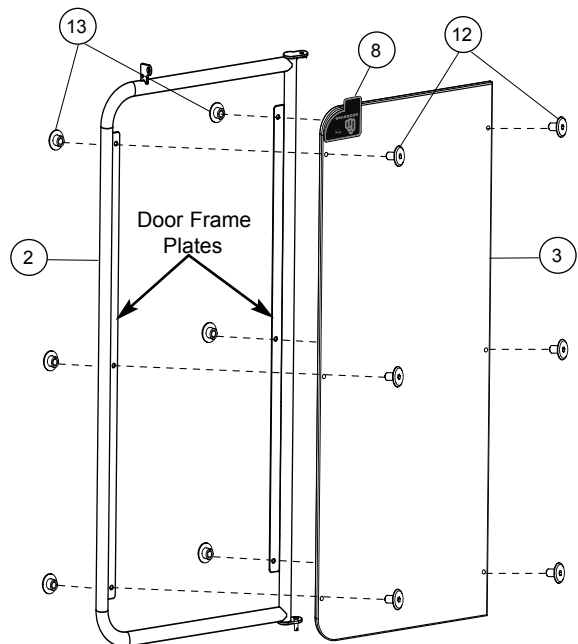


Illustration shown off of Locker for clarity.