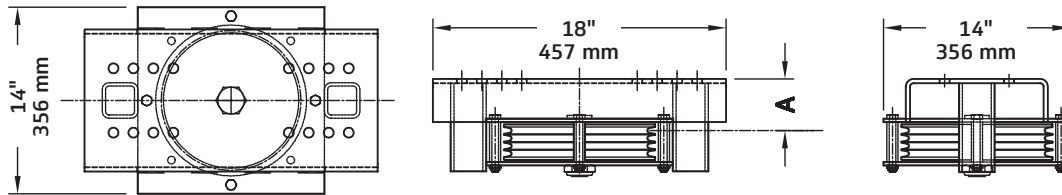


Mule Blocks - 12 Series, 12" (305 mm) Blocks

- Used to divert the cables around obstructions or change direction of travel
- ASTM Class 30 grey iron or nylon sheave
- Tapered roller bearings
- 7-gauge (5 mm) side plates fully enclose sheave
- 3-gauge (6 mm) formed channel base
- Four spacers between the side plates prevent cables from escaping the sheave grooves
- **Mule blocks must be welded in place after final alignment;** consult the factory for specific information
- Three-year warranty against defects in materials or workmanship is provided on all J.R. Clancy equipment, additional warranty information is available at jrclancy.com

Dimensions



Order Information

Number	Grooving	RWL Per Line	Max Total RWL 180°	Max Total RWL 90°	Height	"A"
12" (305 mm) Mule Blocks—Cast Iron						
500-11212C25	(1) 1/4" Cable (6 mm)	700 lb (317 kg)	700 lb (317 kg)	700 lb (317 kg)	4-1/16" (103 mm)	3-3/16" (81 mm)
500-11212C31	(1) 5/16" Cable (8 mm)	900 lb (408 kg)	900 lb (408 kg)	900 lb (408 kg)	4-1/16" (103 mm)	3-3/16" (81 mm)
500-11212C38	(1) 3/8" Cable (10 mm)	1000 lb (453 kg)	1000 lb (453 kg)	1000 lb (453 kg)	4-1/16" (103 mm)	3-3/16" (81 mm)
500-21212C25	(2) 1/4" Cables (6 mm)	700 lb (317 kg)	1400 lb (635 kg)	1400 lb (635 kg)	4-1/16" (103 mm)	3" (76 mm)
500-41212C25	(4) 1/4" Cables (6 mm)	700 lb (317 kg)	1400 lb (635 kg)	2000 lb (907 kg)	5-1/4" (133 mm)	2-7/8" (73 mm)
500-81212C25	(8) 1/4" Cables (6 mm)	700 lb (317 kg)	1400 lb (635 kg)	2000 lb (907 kg)	6-13/16" (173 mm)	2-7/8" (73 mm)
12" (305 mm) Mule Blocks—Nylon						
500-11212N25	(1) 1/4" Cable (6 mm)	875 lb (397 kg)	875 lb (397 kg)	875 lb (397 kg)	4-1/16" (103 mm)	3-3/16" (81 mm)
Dimension "A" is from the base to the center of the first block groove.						
RWL: RWL is maximum load that can be applied to a block which is in "like new" condition and has been properly installed, maintained, and operated.						

