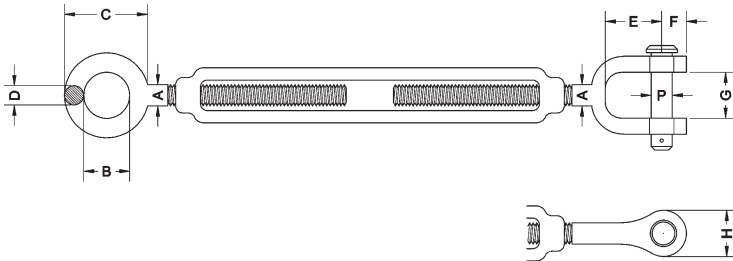


Turnbuckles

- Used for batten trimming or tensioning lines
- Drop forged turnbuckles meeting the requirements of ASTM F1145-92, Type 1, Grade 1, made in the USA
- Hot galvanized finish
- Other types and sizes are available on special order
- Three-year warranty against defects in materials or workmanship is provided on all J.R. Clancy equipment, additional warranty information is available at jrclancy.com

Dimensions



**Turnbuckle
032-221J&E**

| Number | Dim. A | Dim. B | Dim. C | Dim. D | Dim. E | Dim. F | Dim. G | Dim. H | Dim. P | Closed Length |
|------------|--------------|----------------|-----------------|----------------|------------------|----------------|----------------|-----------------|---------------|------------------|
| 032-220J&E | 5/16" (8 mm) | 5/8" (16mm) | 1-1/4" (32 mm) | 9/32" (7 mm) | 7/8" (22 mm) | 5/16" (8 mm) | 15/32" (12 mm) | 5/8" (16 mm) | 1/4" (6 mm) | 9-1/8" (232 mm) |
| 032-221J&E | 3/8" (10 mm) | 3/4" (19 mm) | 1-1/2" (38 mm) | 11/32" (9 mm) | 1" (25 mm) | 13/32" (10 mm) | 1/2" (13 mm) | 13/16" (21 mm) | 5/16" (8 mm) | 11-1/2" (292 mm) |
| 032-221J&J | 3/8" (10 mm) | - | - | - | 1" (25 mm) | 13/32" (10 mm) | 1/2" (13 mm) | 13/16" (21 mm) | 5/16" (8 mm) | 11-1/2" (292 mm) |
| 032-222J&E | 1/2" (13 mm) | 1" (25 mm) | 2" (51 mm) | 7/16" (11 mm) | 1-9/32" (33 mm) | 1/2" (13 mm) | 5/8" (16 mm) | 1" (25 mm) | 7/16" (11 mm) | 13-1/4" (337 mm) |
| 032-223J&E | 1/2" (13 mm) | 1" (25 mm) | 2" (51 mm) | 7/16" (11 mm) | 1-9/32" (33 mm) | 1/2" (13 mm) | 5/8" (16 mm) | 1" (25 mm) | 7/16" (11 mm) | 19-1/4" (489 mm) |
| 032-224J&E | 5/8" (16 mm) | 1-1/4" (32 mm) | 2-5/16" (59 mm) | 17/32" (14 mm) | 1-21/32" (42 mm) | 21/32" (17 mm) | 7/8" (22 mm) | 1-5/16" (33 mm) | 1/2" (13 mm) | 14-5/8" (371 mm) |

Order Information

| Number | Description | RWL | Weight |
|------------|--|-------------------|------------------|
| 032-220J&E | 5/16" x 4-1/2" (8 mm x 114 mm) Jaw & Eye Turnbuckle | 800 lb (362 kg) | 0.5 lb (0.2 kg) |
| 032-221J&E | 3/8" x 6" (10 mm x 152 mm) Jaw & Eye Turnbuckle | 1200 lb (544 kg) | 1 lb (0.45 kg) |
| 032-221J&J | 3/8" x 6" (10 mm x 152 mm) Jaw & Eye Turnbuckle | 1200 lb (544 kg) | 1 lb (0.45 kg) |
| 032-222J&E | 1/2" x 6" (13 mm x 152 mm) Jaw & Eye Turnbuckle | 2200 lb (1000 kg) | 2 lb (0.9 kg) |
| 032-223J&E | 1/2" x 12" (13 mm x 305 mm) Jaw & Eye Turnbuckle | 2200 lb (1000 kg) | 2 lb (0.9 kg) |
| 032-224J&E | 5/8" x 6" (16 mm x 152 mm) Jaw & Eye Turnbuckle | 3500 lb (1587 kg) | 2.6 lb (1.18 kg) |

RWL is based on the manufacturer's 5:1 safety factor.

