

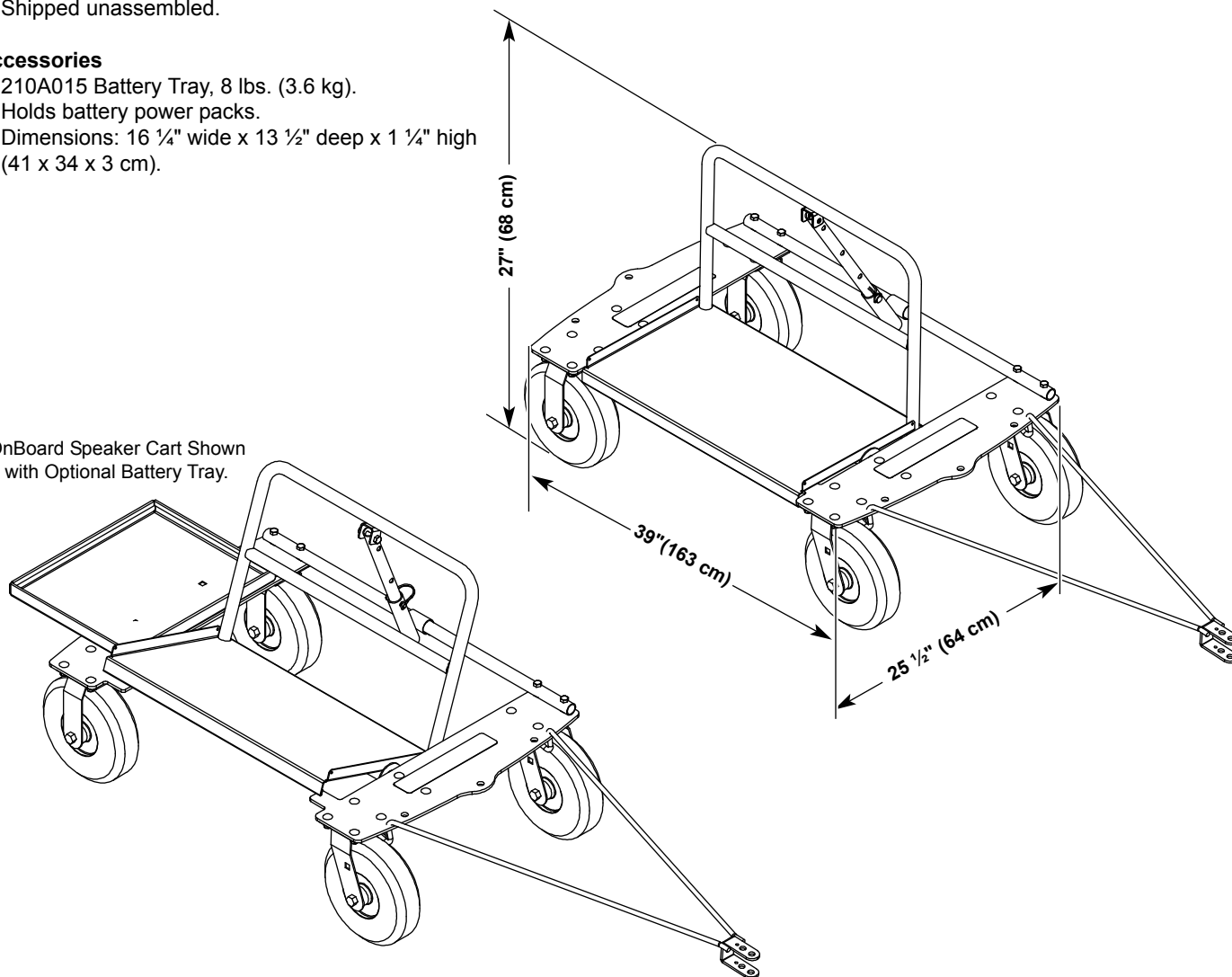
# OnBoard® Speaker Cart

- 210A014 OnBoard Speaker Cart, 1-pack, 72 lbs. (33 kg).
- 210A017 OnBoard Speaker Cart, 2-pack, 174 lbs. (79 kg).
- Ideal for transporting speakers onto field for marching band competitions.
- Designed to fit into trailers, semi-trailers, and trucks.
- Moves heavy-duty speakers up to 14" deep x 24" wide (36 x 61 cm).
- Supports one speaker up to 50 lbs (23 kg).
- Cart tilts speakers into performance position at 0, 15, 30, and 45 degree angle.
- Support tray constructed of ¼" (6.35 mm) thick steel plate with 14-gauge, 1½" (38.1 mm) round steel tubing.
- Fits through 28" (71 cm) door opening.
- Rolls on two rigid and two locking swivel 8" (20 cm) pneumatic wheels.
- Tow bar included for pulling by hand or by small garden tractor.
- Durable black powder-coat paint finish.
- Available with optional battery tray to hold power packs.
- Dimensions: 25 ½" wide x 39" long x 27" high (64 x 99 x 68 cm).
- GREENGUARD Indoor Air Quality Certified® and GREENGUARD Children & Schools<sup>SM</sup> Certified.
- Environmental attributes and LEED compliance for this product can be found at [www.wengercorp.com/GREEN](http://www.wengercorp.com/GREEN) or by contacting your Wenger representative.
- Five-year warranty.
- Shipped unassembled.

## Accessories

- 210A015 Battery Tray, 8 lbs. (3.6 kg).
- Holds battery power packs.
- Dimensions: 16 ¼" wide x 13 ½" deep x 1 ¼" high (41 x 34 x 3 cm).

OnBoard Speaker Cart Shown with Optional Battery Tray.



### WENGER CORPORATION

555 Park Drive, PO Box 448  
Owatonna, MN 55060-0448  
Phone 800.4WENGER (493.6437)  
Fax 507.455.4258  
Customer Service 800.887.7145

### WENGER CORPORATION

**CANADIAN REPRESENTATIVE OFFICE**  
Phone 800.268.0148

### WORLDWIDE

Phone 507.455.4100  
Fax 507.774.8576

### WEB SITE

[wengercorp.com](http://wengercorp.com)