

# Studio<sup>®</sup> Makeup Station — 36" Model

The Wenger Studio Makeup Station will provide performers with a correct and convenient environment for applying makeup and creating other visual effects. The Studio Makeup Station components include a generous counter, a large mirror, a reflective storage shelf, untainted lighting, electrical outlets, and a tackboard. The Studio Makeup Station is intended to be permanently attached to a wall and hard-wired.

- 187A007 Studio Makeup Station, 9 lights, 36", white accent panels
- 187A008 Studio Makeup Station, 6 lights, 36", white accent panels.

## The Counter

- Construction: Medium density fiberboard core and laminate overlay with a stain resistant surface and a matte white finish for light diffusion.
- Features: Rounded upper edges, integral pencil tray.
- Size: 36" wide x 20" deep (92 x 51 cm) with a concave shape for mirror access. 15" (38 cm) from counter edge to mirror surface.
- Load Capacity: 75 lbs (34 kg).
- Work surface is 29" (74 cm) from floor.

## The Mirror

- Construction: High quality glass and silvering laminated to a steel backer to prevent separation of shards if broken.
- Size: 28" (71 cm) square.

## The Mirror Surround

- Construction: Extruded aluminum with white accents. Sheet steel at the base of the mirror.
- Powder-coat paint with a matte white finish for light diffusion.

## The Shelf

- Construction: Medium density fiberboard core and laminate overlay with an easy to clean surface and a matte white finish for light diffusion.
- Size: 36" wide x 12" deep (92 x 31 cm).
- Load Capacity: 25 lbs (114 kg).
- Storage surface is 69" (175 cm) from floor.

## The Lighting

- 9 medium base sockets provided for 60W incandescents or 15W swirl fluorescents. Bulbs are protected by wire cages made from  $\frac{3}{16}$ " (5 mm) diameter steel wire. Cages are permanently mounted, but allow easy bulb replacement (bulbs not included).

## The Electrics

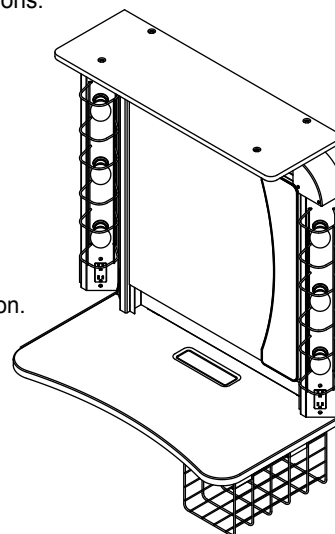
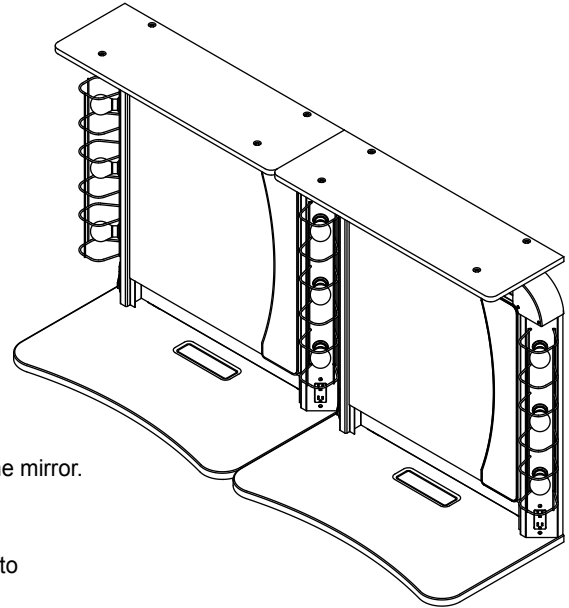
- A rocker type switch is mounted on the lower left side of the mirror surround. It controls the lights only.
- A 20 amp rated duplex outlet with built in GFCI protection is mounted on the lower right side of the mirror surround.
- 24" (61 cm) off flexible conduit and conductors exit the unit beneath the counter, next to the wall.
- **NOTE:** Separate black conductors are provided for lights and outlet to allow circuit design according to anticipated use and local codes.
- Entire product is UL<sup>®</sup> approved.
- A licensed electrician is required to make any electrical connections.

## The Tackboard

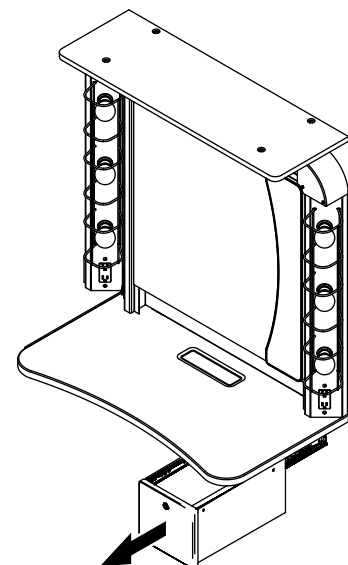
- Construction: White tackable surface mounted in a matte white frame.
- Shipped unmounted. May be attached to top, bottom, or side of the mirror.
- Size: 6" wide x 28" long (15 x 71 cm).

## The Options

- Available with either under-counter storage cage (187A012) or lockable sliding drawer (187A013).
- Space allows for only one storage option per Studio Makeup Station.



Optional Storage Cage



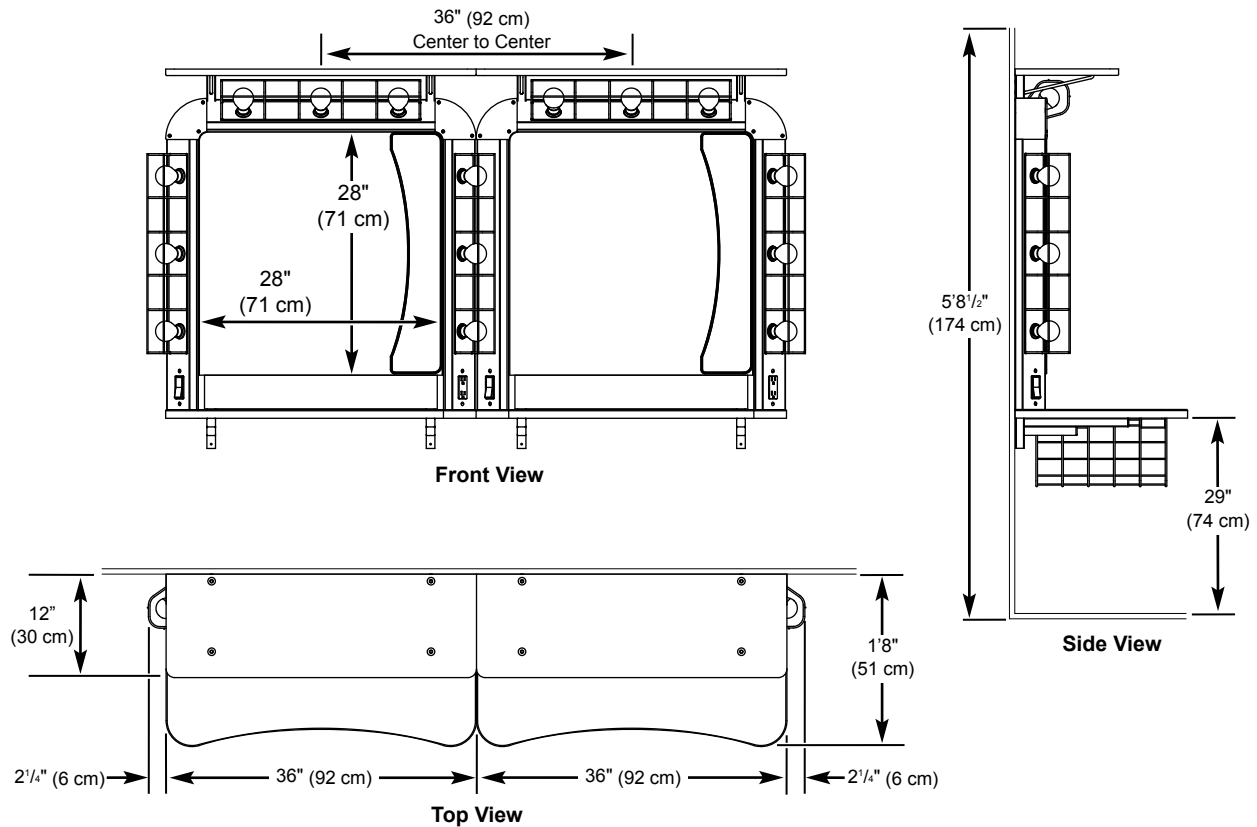
Optional Lockable Sliding Drawer

### Installation

- Mounting bracket is attached to the wall, Studio Makeup Station is hung on the bracket.
- Mounting bracket includes leveling for multi-unit installation.
- When multiple units are installed, adjacent units share a vertical column of bulbs.

#### Physical Dimensions:

Overall width: 40<sup>3</sup>/<sub>8</sub>" (103 cm) (bulb cage-to-bulb cage)  
Overall height: 44" (112 cm)  
Overall depth: 20" (51 cm)  
Multi-unit spacing: 36" (92 cm) center-to-center  
Weight: 80 lbs. (36 kg).



- Environmental attributes and LEED compliance for this product can be found at [www.wengercorp.com/GREEN](http://www.wengercorp.com/GREEN) or by contacting your Wenger representative.

**WENGER CORPORATION**  
555 Park Drive, PO Box 448  
Owatonna, MN 55060-0448  
Phone 800.4WENGER (493.6437)  
Fax 507.455.4258  
Customer Service 800.887.7145

**WENGER CORPORATION**  
**CANADIAN REPRESENTATIVE OFFICE**  
Phone 800.268.0148

**WORLDWIDE**  
Phone 507.455.4100  
Fax 507.774.8576

**WEB SITE**  
[wengercorp.com](http://wengercorp.com)

**Wenger**<sup>®</sup>  
*Your Performance Partner*