

# STRATA<sup>®</sup> Orchestra Pit Filler

## System Description

- Removable Pit Filler system is comprised of labeled decks, beams and columns
- Connections are pinned together for easy tool less installation and removal
- Pins captured by lanyard to prevent loss
- Decks are locked to the beam structure using a hex key tool that is included with the Pit Filler system
- Decks are independent of each other allowing for individual decks to be removed for easy access to or from the pit area when the pit filler is installed
- Multiple deck surface finishes available
- Acoustically dampened honeycomb core decks
- Aluminum extruded frame and column structures
- Decks are custom cut on-site at the time of the installation to match the existing pit opening
- Ten-year warranty
- Environmental attributes and LEED compliance for our products can be found at [wengercorp.com/GREEN](http://wengercorp.com/GREEN) or by contacting your Wenger representative

## Design Requirements

- Maximum available deck height is 10' (3048 mm)
- Decks can be repositioned at different elevations (e.g. stage, audience, pit floor storage, etc) by using different length columns
- Columns have 4" +/- of leveling capability when used from 17" to 120" (432 to 3048 mm) elevations; jam nut provided
- Storage carts are available to store the entire system
- Deck corners are glass-filled nylon to eliminate sharp edges

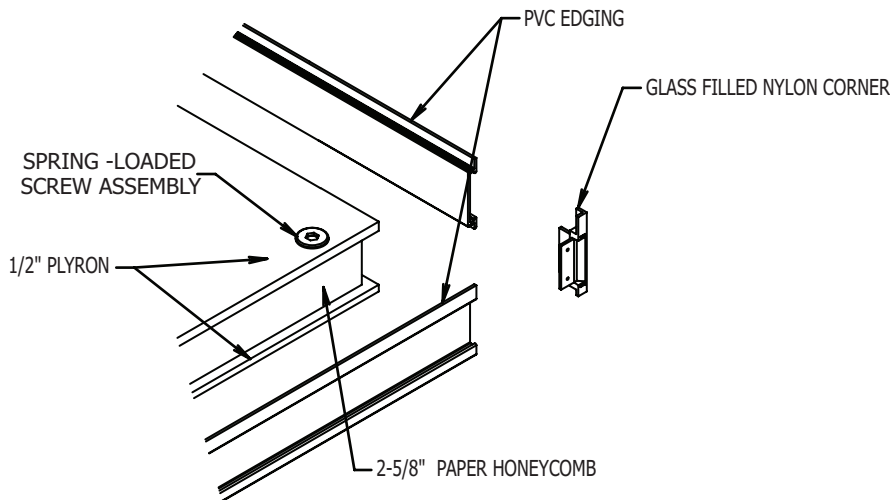
## Performance Requirements

- System meets building code standards of L/360 for a 72" (1829 mm) long deck span
- Standard system meets a vertical live load of 150 lb/ft<sup>2</sup> (732 kg/m<sup>2</sup>)
- Dynamic impact loading: 10,000 cycles of 400 lb-force (181 kg-force) at six locations per 4' x 8' (1219 x 2438 mm) platform
- Point Load Rating (will not leave a permanent deck surface marking):
  - 1" (25 mm) diameter disk = 500 lb (227 kg)
  - 2" diameter x 2" wide (51 x 51 mm) rubber wheel = 1000 lb (454 kg)
  - 3" (76 mm) diameter disk = 1000 lb (454 kg)
  - 4" diameter x 1" wide (102 x 25 mm) rubber wheel = 500 lb (227 kg)



## Decks

- Standard deck construction – 1/2" (13 mm) thick plyon on both sides of a 2-5/8" (67 mm) thick phenolic impregnated paper honeycomb core
- Standard surface is 1/8" (3 mm) thick hardboard
- Available options include:
  - Replaceable/sacrificial 1/4" (6 mm) Stagelam® deck top surface (black)
  - Painted surface (black)
  - Tongue and grooved flooring ready, (T & G supplied by others)
- Standard finish options – unfinished hardboard and painted hardboard
- Glass-filled nylon corners (black)
- Extruded PVC edges (black)
- Deck attachment – integral spring-loaded screw assemblies
- Standard deck size – 47" x 95" (1094 mm x 2413 mm) or less with custom shapes available as required



## Framing Components

### Main Support Beam

- Manufactured out of extruded aluminum
- Beams run in up-stage/down-stage direction when installed in the orchestra pit
- Beams incorporate dual fastener tracks to accommodate spring-loaded screws integrated into the decks

### Diagonal Brace

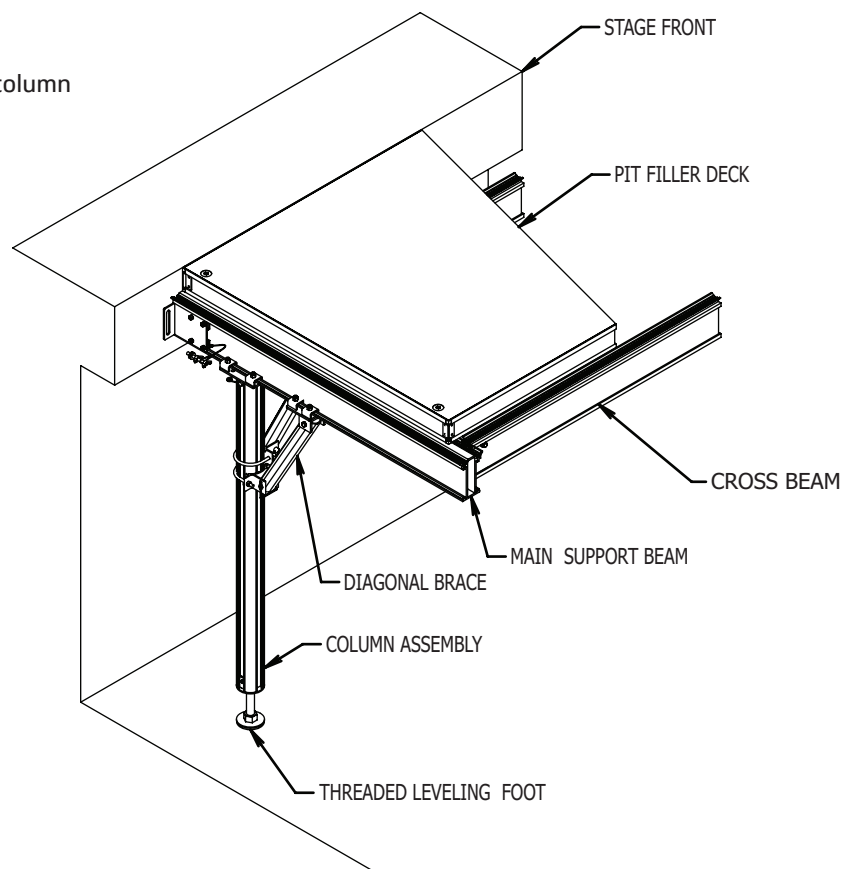
- Manufactured out of extruded aluminum
- Serves as a brace between the main beam and the column
- All attachments are pin connectors

### Cross Beam

- Manufactured out of extruded aluminum
- Pin and socket connection to main support beam

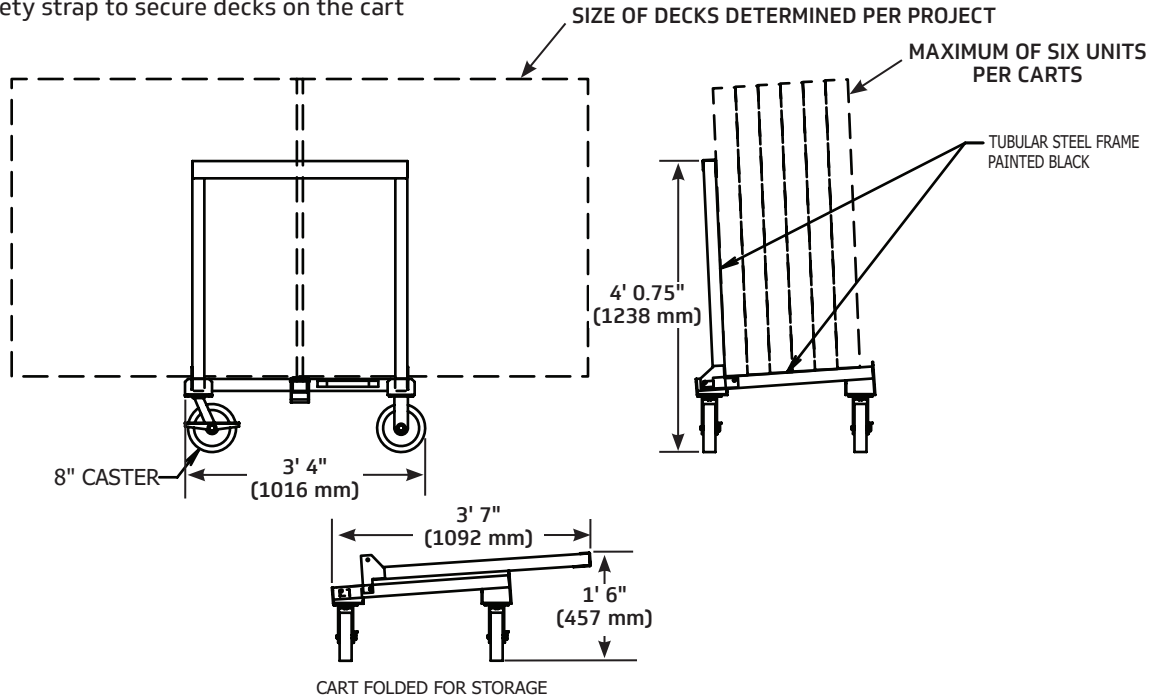
### Column Assembly

- Manufactured out of extruded aluminum
- All attachments are pin connectors
- Threaded leveling foot with total adjustment of 4" (102 mm), plus or minus



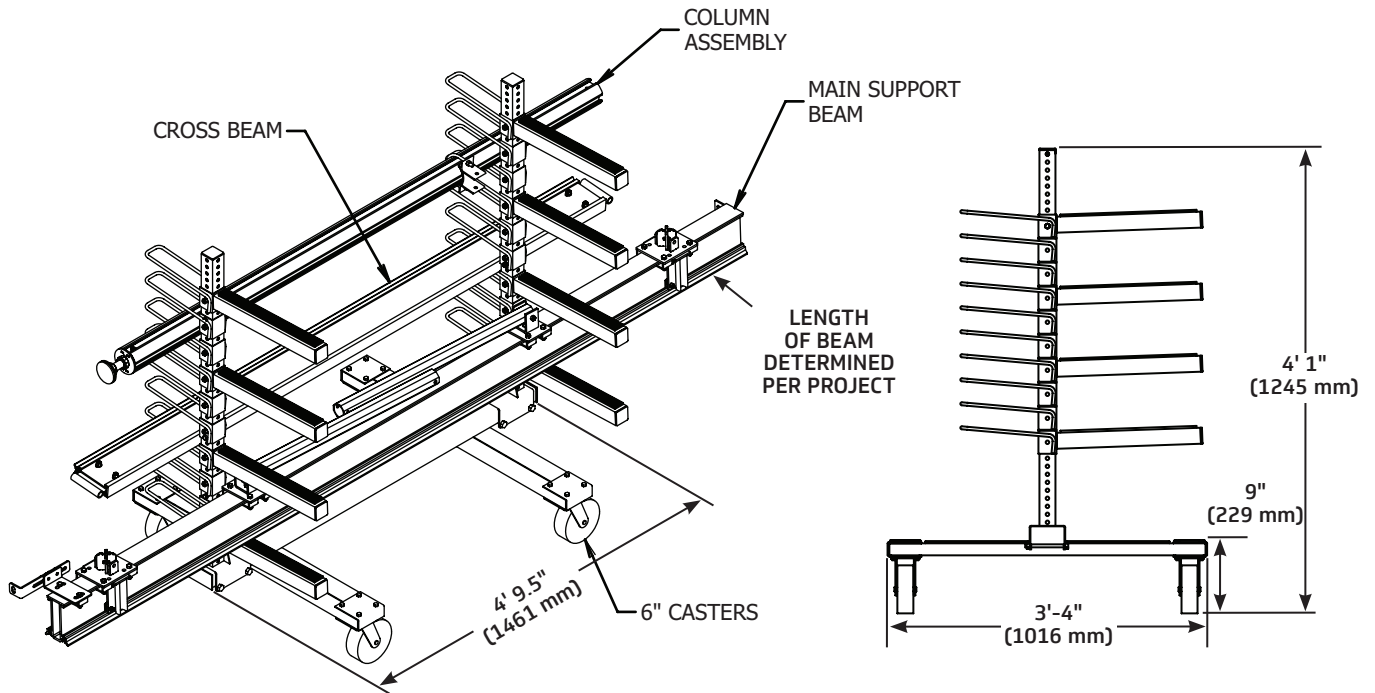
## Deck Storage Cart

- Cart is constructed of steel tubing and formed steel components
- Cart has two rigid and two swivel casters with 8" (20 mm) wheels
- Carts have a black powder-coat paint finish
- Carts have a safety strap to secure decks on the cart



## Main Beam/Column/Cross Beam Storage Cart

- Cart is constructed of steel tubing and formed steel components
- Cart has two swivel casters and two fixed casters with 6" (152 mm) wheels
- Carts have a black powder-coat paint finish



Wenger

JRCLANCY

GEARBOSS

© 2024 Wenger Corporation  
USA/2024-03

Minnesota Location

Wenger Phone 800.4WENGER (493-6437) Wenger Worldwide +1.507.455.4100 | Parts & Service 800.887.7145 | wengercorp.com  
GearBoss Phone 800.493.6437 | gearboss.com  
555 Park Drive, PO Box 448 | Owatonna | MN 55060

New York Location

J.R. Clancy Phone 800.836.1885 JR Clancy Worldwide +1.315.451.3440 | jrclancy.com | 7041 Interstate Island Road | Syracuse | NY 13209