

Wenger®

C O R P O R A T I O N

STAGETEK® STAGING SYSTEM



- FAST, EASY, INTUITIVE SETUP
- MORE STRENGTH AND STABILITY
- MAXIMUM FLEXIBILITY
- IMPROVED STORAGE AND TRANSPORT
- ENHANCED SAFETY AND HANDLING COMFORT
- DURABLE AND REPAIRABLE



STAGETEK® STAGING SYSTEM

Everything about StageTek® is an advancement. The refined, smart design is the result of extensive research, engineering and technical advancements in materials and manufacturing. Our staging system is lighter, stronger, easier to handle and faster to set up. When it comes to stretching your investment across multiple needs like seated risers and performance stages, StageTek sets a new standard. For unlimited flexibility, an extra set of legs stored under your deck is all you will need – that’s why we make the legs strong, simple and inexpensive. Compare Wenger’s StageTek Staging to any other option and see for yourself why your next stage or riser will be StageTek.



FAST, EASY, INTUITIVE SETUP

Round legs fit easily into corner pockets and become rock-solid with a single turn of a knob.

Plug-n-play leg connection is simple and fast. No tools. No folding frames or pins to align. As much as 20% faster and 15% lighter compared to alternative systems.



ENHANCED SAFETY & HANDLING COMFORT

StageTek’s decks are at least 15% lighter than competitor systems and easier to grip, reducing potential for injury to your crew.



IMPROVED STORAGE & MOBILITY

Six decks and multiple sets of legs store on one easy moving cart. In fact, StageTek stores in 50% less space than some other competing products. Underneath a StageTek setup you have a wide open space unencumbered by frames and braces.



MORE STRENGTH & STABILITY

StageTek is the only system that exceeds performance expectations for load ratings.

- StageTek Load Ratings as measured on a 4' x 8' (1219 x 2438 mm) rectangular deck:
- Standard Uniform Live Load for decks with 4 legs: 125 lbf/sq ft (6 kN/sq m), meets L/75 deflection criteria
 - Heavy Duty Uniform Live Load for decks with 5th leg (as needed or smaller deck): 150 lbf/sq ft (7.2 kN/sq m), meets L/180 deflection criteria
 - Heavy Duty Uniform Live Load for decks with no 5th leg, added stiffener(s): 150 lbf/sq ft (7.2 kN/sq m), meets L/180 deflection criteria
 - Lateral Live Side Load: 12 lbf/sq ft (0.6 kN/sq m) based on deck top surface area, meets IBC code
 - Caster Load: 300 lb (136 kg) applied via 2" (51 mm) diameter by 2" (51 mm) wide flat rubber wheel with no appreciable surface deformation
 - Concentrated Load: 500 lb (227 mm) on a single 6" x 6" (152 x 152 mm) square area per deck



MAXIMUM FLEXIBILITY

Flexibility between configurations and heights is all about the legs and that's why we made them simple, strong, easy to use and inexpensive.

Tiered Seating
Graduation Stage
Runways

Event Staging
Presentation
Platforms

Drum Riser
Stage Extensions
Theatrical Sets



Individual Platforms



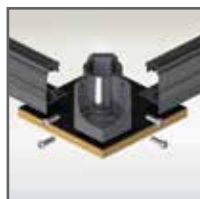
Flat Stage



Multilevel Stage



Seated Riser



DURABLE & REPAIRABLE

Every component can be easily replaced to keep your decks fresh and new looking.



STAGETEK® STAGING SYSTEM

EASY SET-UP



DECK STORAGE AND TRANSPORT



SET UP



PLATFORMS

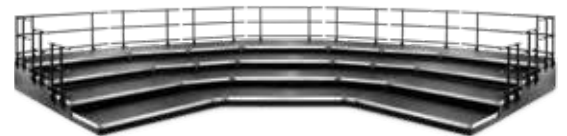


TIERED SECTIONS

Pie-shaped decks give you unmatched flexibility to create a variety of configurations.



FLAT OR MULTI-LEVEL STAGES



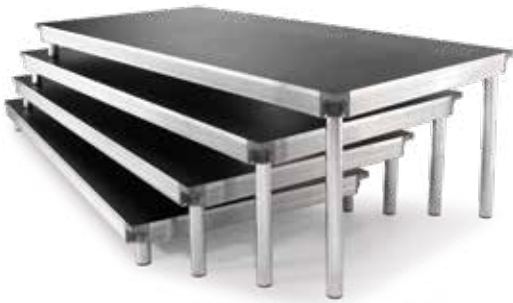
SEATED RISERS

Setting up single- or multi-level stages is fast and easy with various sets of legs, and Wenger's articulating stairway adapts to virtually any height you need.

StageTek allows you to create seated risers for any event. Further enhance your setup with side and front closure panels for a finished look that also keeps dust and litter from collecting underneath.

VARIETY OF DECK SIZES, SURFACES AND LEG TYPES

With a single set of StageTek decks and interchangeable legs of different lengths, you can create just about any staging setup you need in no time. The StageTek concept is simple. Instead of attached legs, StageTek decks have optional sturdy retention clips that store and transport interchangeable legs. By using legs of different lengths, a crew of two can turn StageTek into multi-level stages, seated risers, runways, speaker platforms, graduation stages, and just about any other configuration you can imagine.



LEG OPTIONS

FIXED HEIGHT LEG SIZES

- 8" (203 mm)
 - 16" (406 mm)
 - 24" (610 mm)
 - 32" (813 mm)
 - 40" (1016 mm)
- Available in any height



TELESCOPIC LEGS

- 16" - 28" (406 - 711 mm)
- 24" - 40" (607 - 1016 mm)
- 30" - 54" (762 - 1372 mm)

ADJUSTABLE LEGS

Available from 4" - 120" (102 - 3048 mm) in height



Shown with center leg option for heavy duty use.

DECK OPTIONS

SIX STANDARD DECK SIZES

- 3' x 3' (914 x 914 mm): 37 lbs (17 kg)
- 3' x 6' (914 x 1829 mm): 65 lbs (29 kg)
- 3' x 8' (914 x 2438 mm): 87 lbs (39 kg)
- 4' x 4' (1219 x 1219 mm): 59 lbs (27 kg)
- 4' x 6' (1219 x 1829 mm): 85 lbs (39 kg)
- 4' x 8' (1219 x 2438 mm): 107 lbs (49 kg)

Pie shaped and custom decks are available.

A crew of one or more can set up an entire StageTek stage – with accessories – quickly. StageTek goes up without pins, tools or separate assemblies.



STAGETEK® OUTDOOR STAGING



Painted surface, frame and leg options available (excludes telescopic legs).



Aluminum deck designed for outdoor use in all types of weather. Decks have spaces for drainage and a textured surface to improve traction and reduce shine. Will not rot, peel, warp or swell. Non-combustible.



1/4 Round Deck



Tri-Corner

SURFACE OPTIONS

StageTek Staging features a variety of surface options that won't curl or peel up like common laminated surfaces. Tough and long-wearing surfaces also provide excellent traction, even when wet.



Black Cracked Ice



Black Moroccan



Black Quadriple



Natural Hardboard



Grey Carpet



Black Painted



STAGETEK® STAGING SYSTEM OFFERS MULTIPLE CONFIGURATIONS

TYPICAL STAGING SETS

Wenger offers complete StageTek staging sets tailored to your needs. As your needs change, you can simply order additional leg sets to accommodate new height requirements.

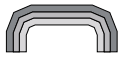

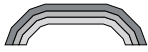
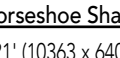
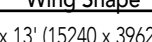
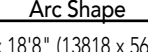
This is a small sample of what you can create.

Elevation	Dimensions	Number of Decks
24" (610 mm) 32" (813 mm)	12' x 16' (3658 mm x 4877 mm) "	Six 4' x 8' (1219 mm x 2438 mm) "
24" (610 mm) 32" (813 mm)	12' x 24' (3658 mm x 7315 mm) "	Nine 4' x 8' (1219 mm x 2438 mm) "
24" (610 mm) 32" (813 mm)	16' x 24' (4877 mm x 7315 mm) "	Twelve 4' x 8' (1219 mm x 2438 mm) "
24" (610 mm) 32" (813 mm)	16' x 32' (4877 mm x 9754 mm) "	Sixteen 4' x 8' (1219 mm x 2438 mm) "
24" (610 mm) 32" (813 mm)	20' x 32' (6096 mm x 9754 mm) "	Twenty 4' x 8' (1219 mm x 2438 mm) "

Typical sets can include any optional or all of the following: Two stairways with double handrails, drapery closures, guardrails and a universal cart.

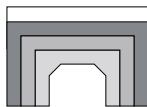
PRE-CONFIGURED SEATED RISER SETS

Many facilities use StageTek in rehearsal rooms as a way to elevate seating for better sightlines without losing any of the cubic volume critical to the acoustical performance of the room.

Capacity*	Horseshoe Shape	Wing Shape	Arc Shape
3' (914 mm) DEEP TIERS			
51-60	26'11" x 16'6" (8204 x 5029 mm)	38'11" x 10'6" (11862 x 3200 mm)	35'5" x 14'9" (10795 x 4496 mm)
72-88	36'11" x 18'6" (11252 x 5639 mm)	52'11" x 10'6" (16129 x 3200 mm)	48'3" x 16'2" (14707 x 49226 mm)
4' (1219 mm) DEEP TIERS			
51-60	34' x 21' (10363 x 6401 mm)	50' x 13' (15240 x 3962 mm)	45'4" x 18'8" (13818 x 5690 mm)
69-84	50' x 21' (15240 x 6401 mm)	66' x 13' (20117 x 3962 mm)	61'4" x 18'8" (18694 x 5690 mm)

RECTANGULAR SETS

Capacity*	Dimensions
36-40	28' x 16' (8534 x 4877 mm)
72-84	48' x 20' (14630 x 6096 mm)



Seated riser sets can be configured into several shapes simply by changing the location of the pie sections.

Wenger can assist you to create a set that will work for you.

*First seating capacity number indicates capacity on the risers. Second number indicates seating capacity with one row of chairs on the floor. Seating capacities are based on 32" (813 mm) (band/orchestra) and 26" (660 mm) (choral) chair spacing. Back row extensions are available.



ACCESSORIES

UNIVERSAL MOVE & STORE CART



Universal Move and Store Cart – For Decks and Guardrails.

10-unit horizontal cart kit also available.

PLUG-N-PLAY LEGS AND CENTER LEG OPTION

CLAMPS, CONNECTORS AND BRACES

Each deck comes standard with two leg straps. Optional Retention Clips mount under the deck to provide leg storage and a variety of metal leg to leg, leg to deck, overlap and anchor brackets are available.



Leg Retention Clips

Shown with center leg option for heavy duty applications.



Fixed Height, Adjustable Legs and Telescopic Legs



Hook and Loop Velcro Leg Strap



Leg-to-Frame Connectors



Leg-to-Leg Connectors



Low-Rise Bracket



Stage Anchor



Leg Retention Clips

Not shown: Overlap Bracket Available

Connection brackets determined by layout. Please consult with your Wenger Representative for suggested options.



ROLL-A-DECK KIT

Transform your StageTek Staging into a rolling riser. Ideal for applications that require rapid setups and changeovers.



ADA-COMPLIANT RAMPS

Made with Quadriple stage surface, This ramp will connect easily with any stage setup you build.



Meets the requirements as outlined in the 2015 INTERNATIONAL BUILDING CODE - SECTION 1012



NO TOOLS REQUIRED

STANDARD GUARDRAILS AND OPTIONS FOR INFILL PANELS

Guardrails are 42" (1067 mm) high and comply with IBC requirements for loading. An optional infill panel can be added that complies with the IBC 4" (102 mm) sphere code. Guardrails clamp to the stage without the need for tools.



Removable Chair Stops



Semi-Permanent Chair Stops (Installation requires drilling into decks)

DRAPERY AND CLOSURE PANELS
 Drapery is available in heights to match the staging elevation and in a wide variety of colors. Solid closures are ideal for seated riser systems and connect to the rail without tools.

STAIRWAYS



DUAL-HEIGHT STAIRWAY
 Available in 2-, 3- or 4-step units include handrails and safety treads.



ARTICULATING STAIRWAY
 Variable-height stair units include removable safety and handrails treads. Available in 3-, 4-, 6- and 8-step models.



MID-AISLE HANDRAIL
 Easily attaches to StageTek decks for use with audience seating applications.



BOX STEPS
 Configured to work with your StageTek Audience Seating. Custom widths and heights available.



MORE THAN 75 YEARS OF EXPERIENCE GUARANTEES YEARS OF SATISFACTION.

Wenger Corporation was founded in 1946 to provide innovative, high-quality products and solutions for music and theatre education, performance and athletic equipment storage and transport. We have spent more than 75 years listening to what our customers need and then designing and developing durable, functional products to meet those needs – products that enhance any program and deliver what they promise year after year.



© 2024 Wenger Corporation
USA/5-24/250/W/LT01601



C O R P O R A T I O N

Minnesota Location

Wenger Phone 800.4WENGER (493-6437) Wenger Worldwide +1.507.455.4100 | Parts & Service 800.887.7145 | wengercorp.com
GearBoss Phone 800.493.6437 | gearboss.com
555 Park Drive, PO Box 448 | Owatonna | MN 55060

New York Location

JR Clancy Phone 800.836.1885 JR Clancy Worldwide +1.315.451.3440 | jrclancy.com | 7041 Interstate Island Road | Syracuse | NY 13209

Brands of Wenger Corporation

Follow us on Social Media

