

Contents

Important User Information	2	Replacement Parts	6
Safety Precautions	3	Storage	8
Adjust Middle Shelf Height	4	Cleaning and Maintenance	8
Accessories	5		



Visit the teacherTAXI web page at wengercorp.com for more information.

Note: Please read and understand these instructions before proceeding.
Note: If you need additional information, contact Wenger Corporation using the information below.

Important User Information

General

Copyright © 2024 by Wenger Corporation

All rights reserved. No part of the contents of this manual may be reproduced, copied, or transmitted in any form or by any means including graphic, electronic, or mechanical methods or photocopying, recording, or information storage and retrieval systems without the written permission of the publisher, unless it is for the purchaser's personal use.

Printed and bound in the United States of America.

The information in this manual is subject to change without notice and does not represent a commitment on the part of Wenger Corporation. Wenger Corporation does not assume any responsibility for any errors that may appear in these instructions.

In no event will Wenger Corporation be liable for technical or editorial omissions made herein, nor for direct, indirect, special, incidental, or consequential damages resulting from the use or defect of these instructions. The manufacturer reserves the right to change this product at any time.

The information in this document is not intended to cover all possible conditions and situations that might occur. The end user must exercise caution and common sense when assembling or installing Wenger Corporation products. If any questions or problems arise, call the Wenger Corporation at (800) 4WENGER (493-6437) or +1-507-455-4100 worldwide.

Manufacturer

The teacherTAXI® is manufactured by:

Wenger Corporation
555 Park Drive
Owatonna, MN 55060
(800) 4WENGER (493-6437) • +1 (507) 455-4100
wengercorp.com

Intended Use

- This product is intended for indoor use in normal ambient temperature and humidity conditions – it must not be exposed to prolonged outside weather conditions.
- This product is intended to be assembled and used only as described in these instructions.

Warranty

Warranty information is available at wengercorp.com.

Safety Precautions

Throughout this document you may find cautions and warnings which are defined as follows:

- **WARNING:** Failure to follow the instruction could result in serious injury or damage to property.
- **CAUTION:** Failure to follow the instruction could result in minor injury or damage to property.

Read all of these safety instructions before using the equipment.

CAUTION

Make sure anyone assembling, installing or using this product has read and understands these instructions.

CAUTION

Failure to comply with Warnings and Cautions in this document or on the equipment can result in damage to property or injury.

CAUTION

Cart Loading

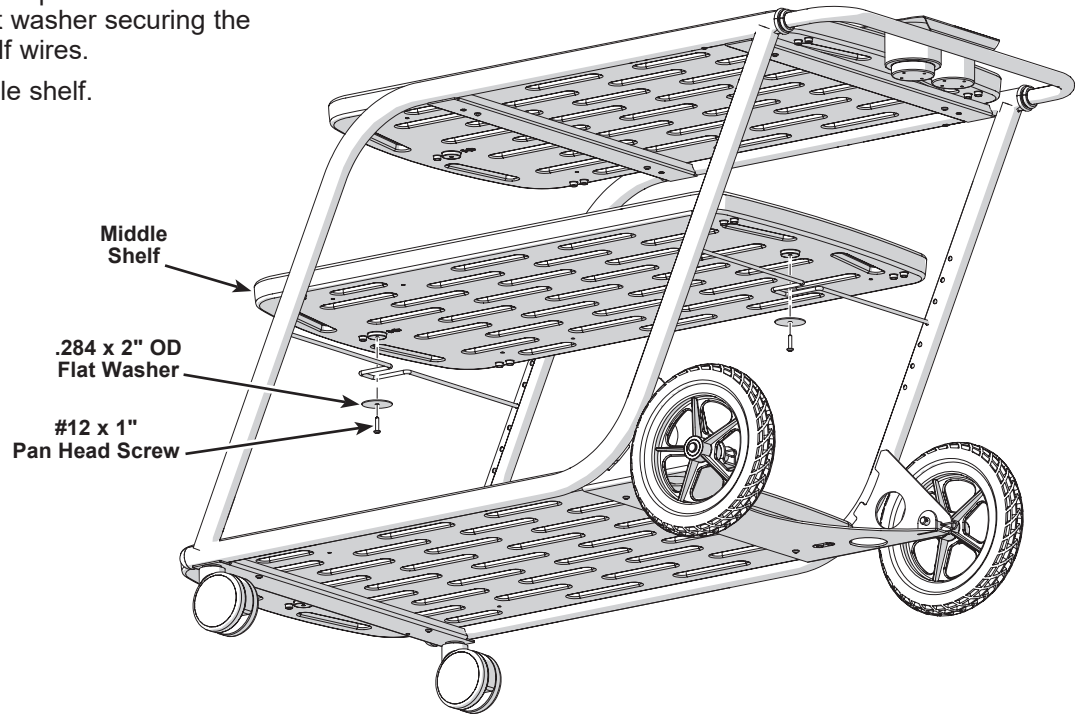
- *The top and bottom shelf may carry up to 100 lb (45 kg) evenly distributed. The center shelf may carry up to 50 lb (27 kg) evenly distributed. The total load carried by the teacherTAXI should not exceed 200 lb (91 kg).*
- *Always place heavier items on the lower shelf. A top-heavy teacherTAXI is easier to tip over.*

Cart Usage

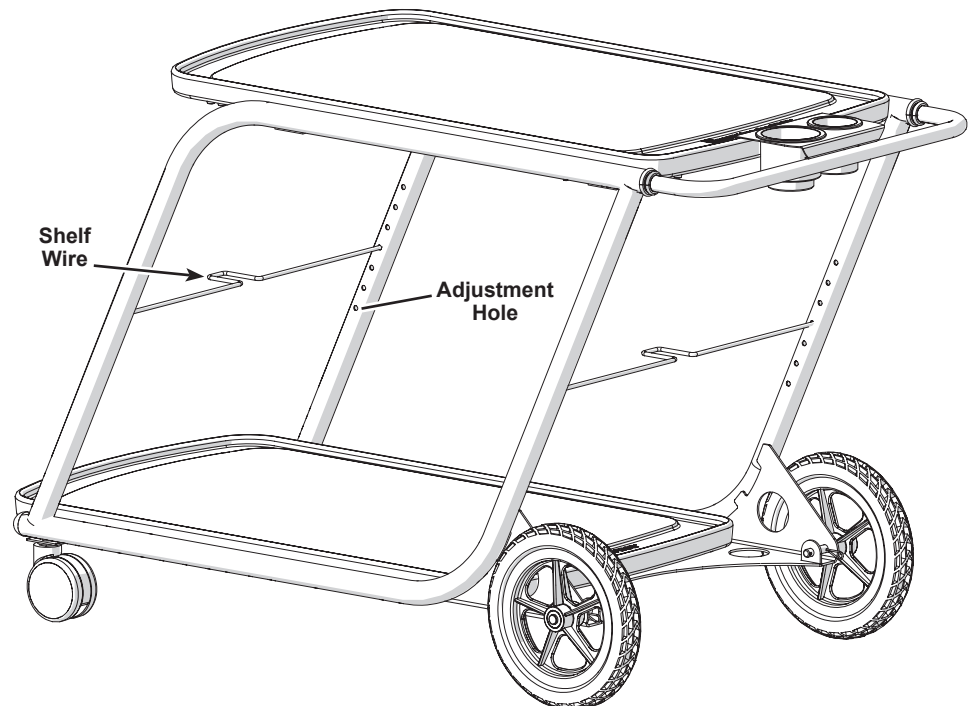
- *Never overload the teacherTAXI, overloading can make it hard to control.*
- *Always move the teacherTAXI at a slow speed, no faster than walking.*
- *Never allow anyone to ride on the teacherTAXI.*

Adjust Middle Shelf Height

1. At both the front and back of the middle shelf, remove the #12 x 1" pan head screw and 0.284 x 2" OD flat washer securing the bottom to the shelf wires.
2. Remove the middle shelf.



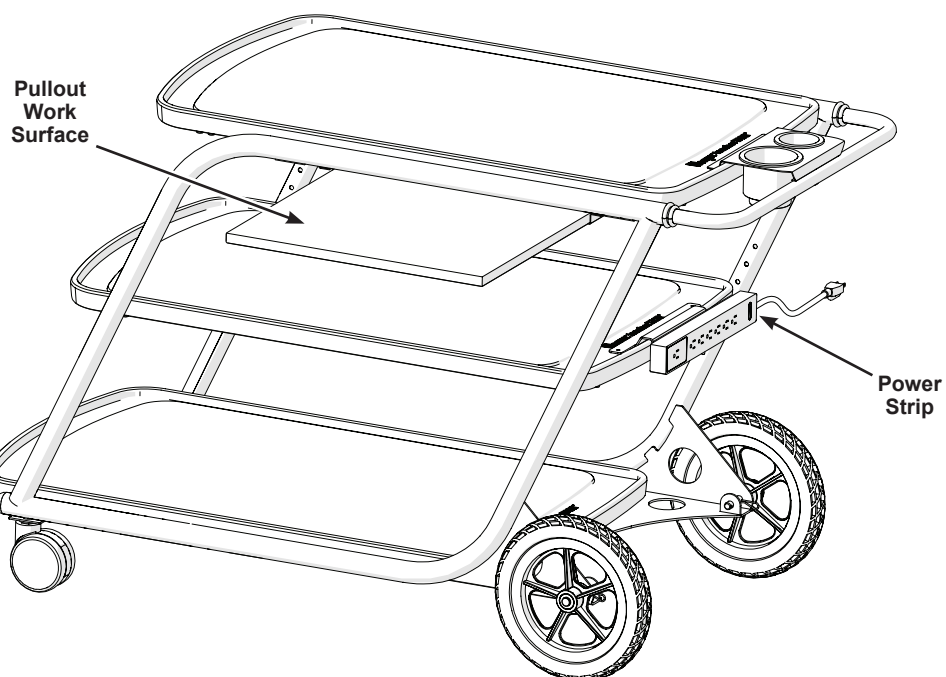
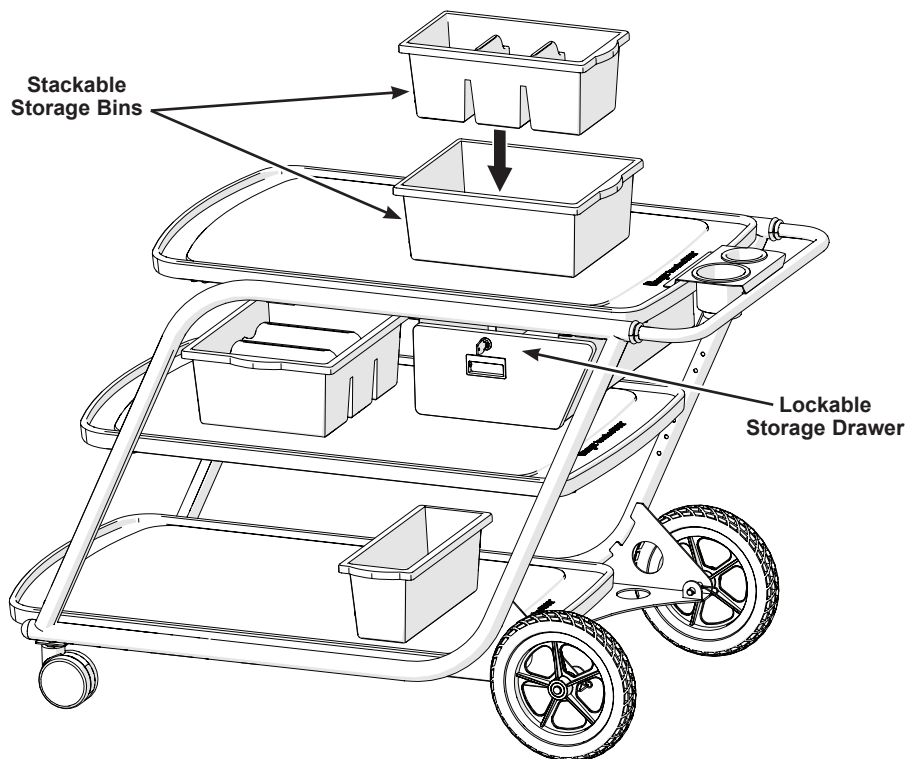
3. Position both shelf wires at the new height. **It may be necessary to bow the wires slightly.**
4. Reattach both ends of the middle shelf to the shelf wires using the original fasteners.



Accessories

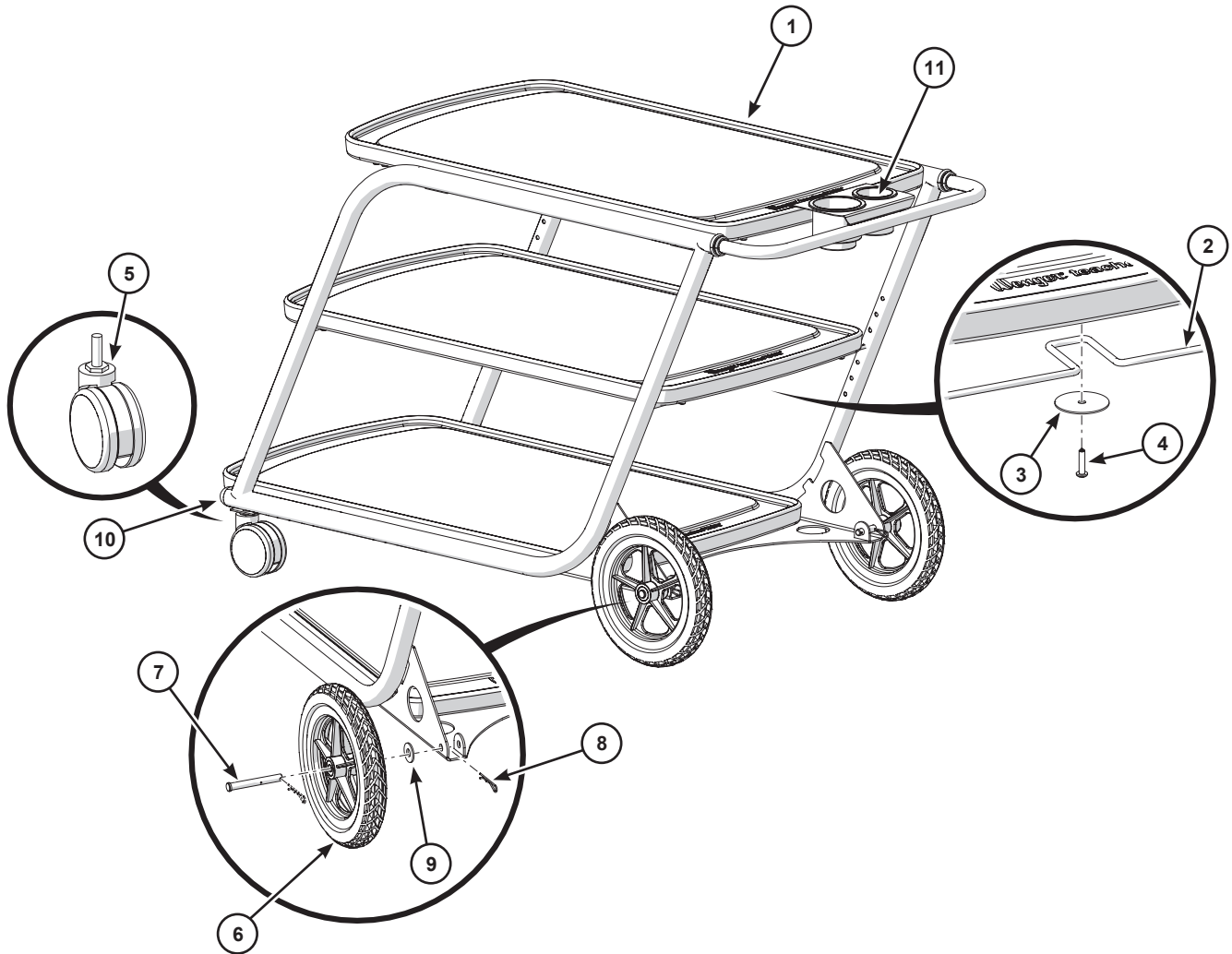
Available Accessories

- Lockable storage drawer for laptop computers, purses, etc
- Stackable storage bins
- Pullout work surface for teaching or laptop use
- UL Approved power strip (see following page)



Replacement Parts

Item	Description	Item	Description
1	Shelf	7	1/2" Axle Pin
2	Shelf Wire	8	Cotter Pin
3	0.284" x 2" OD Flat Washer	9	1/2" x 1-3/8" OD Flat Washer
4	#12 x 1" Pan Head Screw	10	1-1/2" Dome Plug
5	Front Caster	11	Drink Holder
6	Rear Wheel		



Storage

When leaving the teacherTAXI in a stationary position or in storage, block or secure the casters to prevent the cart from moving.

Cleaning and Maintenance

Cleaning

1. Clean metal surfaces with a mild, non-abrasive soap with warm water and a clean, soft cotton cloth.
Never use an abrasive or harsh cleaning agent or a chemical cleaning agent.
2. All plastic components may be cleaned with mild spray cleaner. A soft bristle brush may be required for the textured areas.

Maintenance

1. Immediately replace any caster wheels that do not rotate or turn freely.
2. Immediately replace or repair any tire that develops a flat area.

This page is intentionally blank.