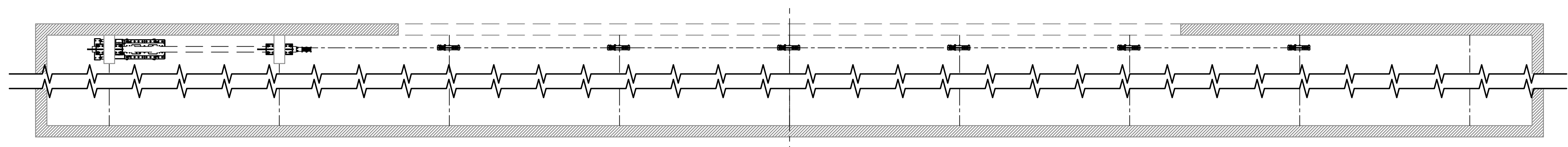


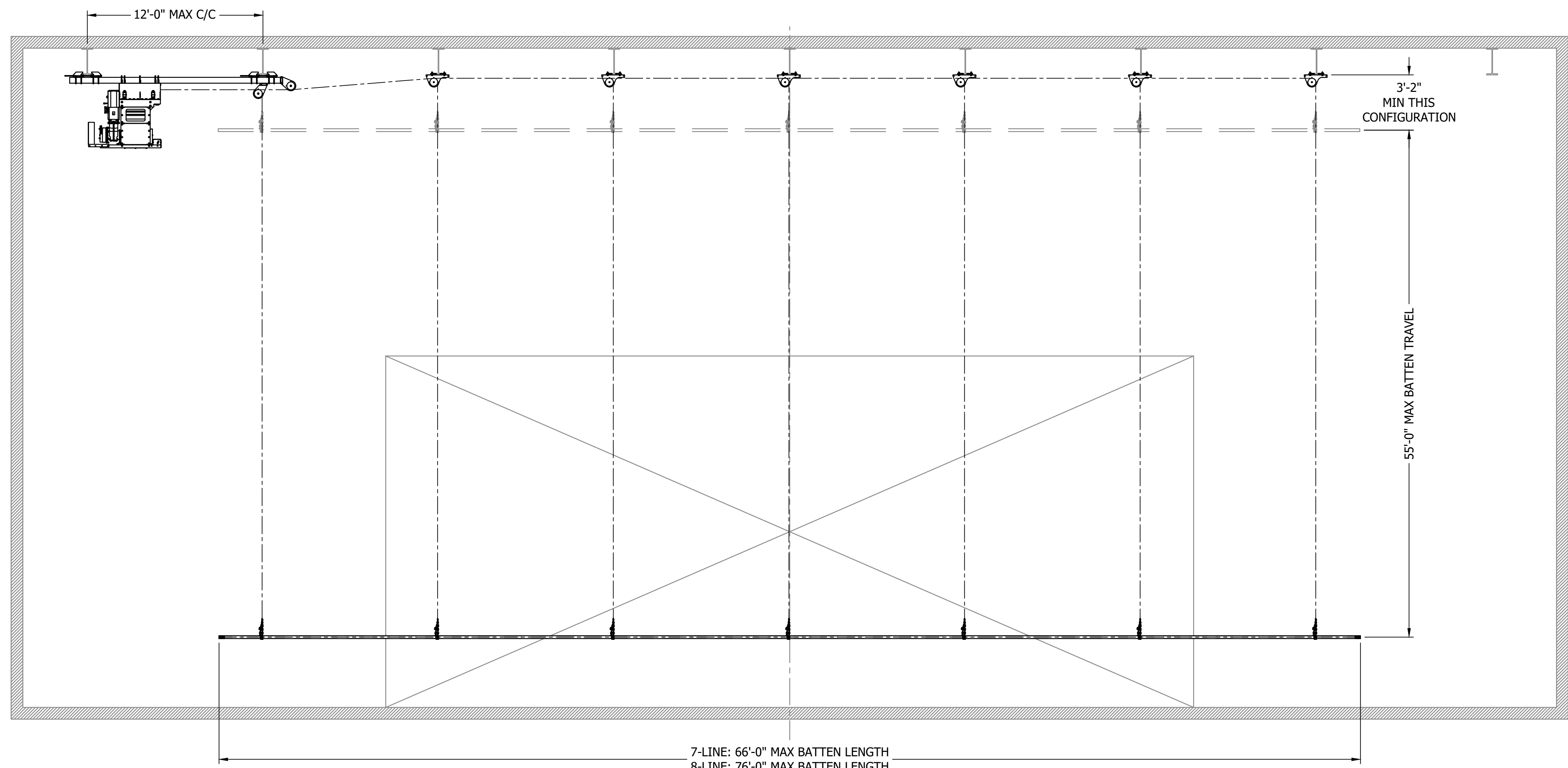
REV	DATE	DRN BY	REVISION DESCRIPTION
*			

THIS DRAWING AND RELATED SPECIFICATIONS ARE CONFIDENTIAL AND PROPRIETARY TO THE WENGER CORPORATION. COPYRIGHT 2025 WENGER CORPORATION ALL RIGHTS RESERVED

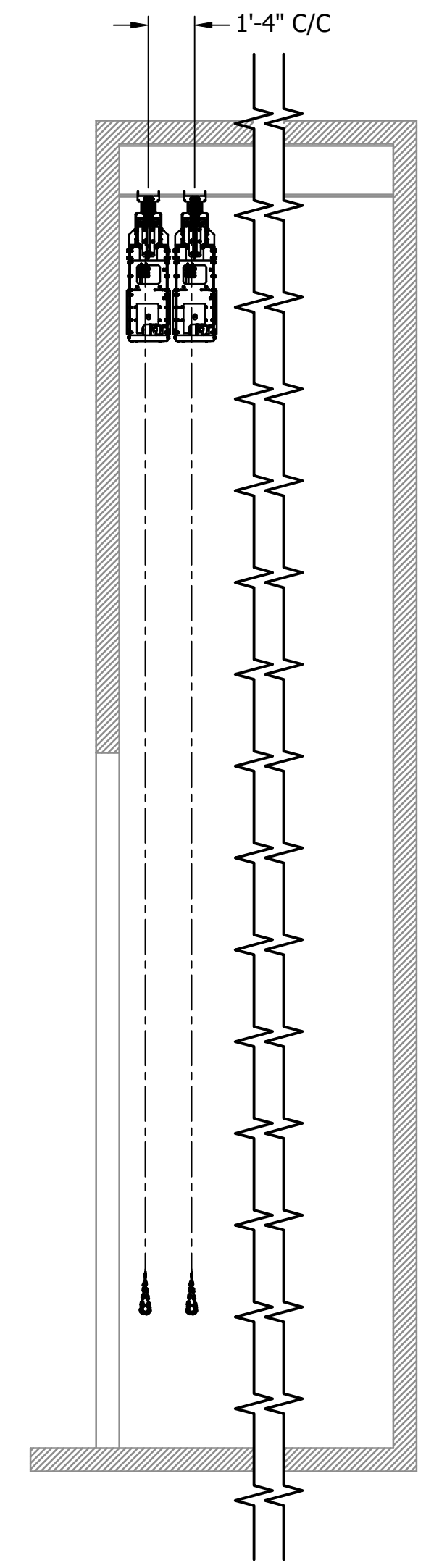
THIS DRAWING IS PROVIDED FOR INFORMATIONAL PURPOSES ONLY. THIS DRAWING WAS PRODUCED BASED ON INFORMATION PROVIDED TO US BY AN ARCHITECT AND FIELD INFORMATION PROVIDED BY YOU OR YOUR AGENT. WE HAVE NO WAY OF CONFIRMING THE ACCURACY OR COMPLETENESS OF THE INFORMATION PROVIDED TO US. YOU ARE RESPONSIBLE FOR PROPERLY INSTALLING THE EQUIPMENT BASED ON ACTUAL FIELD CONDITIONS, NOTWITHSTANDING CONTRARY INFORMATION CONTAINED IN, OR OMITTED FROM, THIS DRAWING.



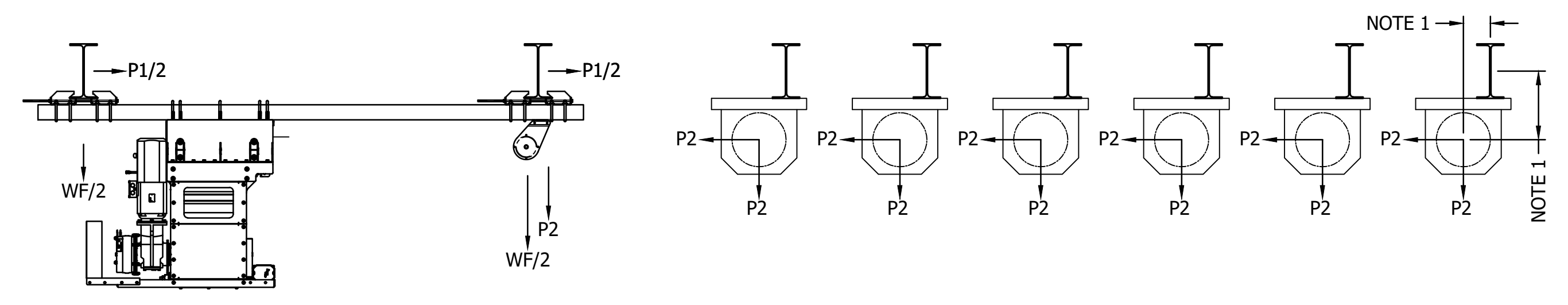
**2 SUMMIT THEATRON SYSTEM PLAN**  
SST-2 SCALE: 1/4" = 1'-0"



**1 SUMMIT THEATRON SYSTEM ELEVATION**  
SST-2 SCALE: 1/4" = 1'-0"



**3 SUMMIT THEATRON SYSTEM SECTION**  
SST-2 SCALE: 1/4" = 1'-0"



**4 TYPICAL RIGGING LOADS ON BUILDING**  
SST-2 SCALE: NONE

**LOADING NOTES:**  
P1 (SUMMIT THEATRON HOIST LINE LOAD) = SET CAPACITY (TABLE 1)  
P2 (LOFT BLOCK LINE LOAD) = 0 TO 500 LBS  
W (SUMMIT THEATRON HOIST WEIGHT) = SEE TABLE 1  
WF (SUMMIT THEATRON HOIST FRAME AND BEAM CLAMP WEIGHT) = SEE TABLE 1

- ALL BLOCK LOADS ACT AT THE BLOCK SHAFT. THE HORIZONTAL AND VERTICAL OFFSET BETWEEN THE BLOCK SHAFT AND SUPPORTING BEAM CENTROID MAY RESULT IN TORSIONAL LOADS ON BEAM.
- SET CAPACITY = SEE TABLE 1
- LIVE LOAD CAPACITY = SET CAPACITY - BATTEN WEIGHT
- TOTAL LINE LOAD ON ALL LOFT BLOCKS NOT TO EXCEED SET CAPACITY.
- LINE LOAD ON EACH LOFT BLOCK NOT TO EXCEED LOFT BLOCK CAPACITY (P2).
- THE TOTAL HOIST CAPACITY MAY NOT BE EQUALLY SHARED BETWEEN BEAMS. THIS WILL BE DEPENDENT UPON A VARIETY OF FACTORS SUCH AS INSTALLATION METHODS, INDIVIDUAL BEAM FLEXIBILITY, ROOF BRACING, ETC.

PART NUMBER	SPEED	SET CAPACITY (P1)	HOIST WEIGHT (W)	HOIST & FRAME WEIGHT (WF)
018-S0322	0-30 FPM (0-9.1 M/MIN)	2200 LB (998 KG)	870 LB (395 KG)	1091 LB (495 KG)
018-S2115	0-205 FPM (0-62.5 M/MIN)	1500 LB (680 KG)	848 LB (385 KG)	1069 LB (485 KG)

**STANDARD TOLERANCES**  
UNLESS NOTED OTHERWISE

MACHINING:	1/X	±1/16"
	.XX	±.015"
	.XXX	±.005"
	ANGZ	±1/2°
WELDING:	DIMS 0 - 10'	±1/16"
	DIMS 10' - +	±1/8"
	ANGZ	±1/2°

FINISH: TO BE SPECIFIED

FINISH:	WEIGHT:	ORDER:

THIRD ANGLE PROJECTION PER ASME Y14.3

DRAWING TITLE:  
SUMMIT THEATRON SYSTEM ELEVATION

PROJECT/OPPORTUNITY NUMBER:

SCALE: DO NOT SCALE DRAWING			
DATE	DRN BY	CHK BY	APVD BY
05/01/25	DJC		
DRAWING NUMBER:		REV:	
<b>SST-2</b>		<b>A</b>	
SHEET 1 OF 1			