

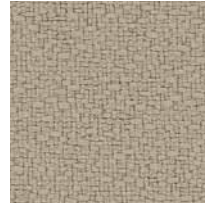
Anchorage 2335



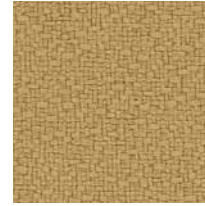
Birch
2129



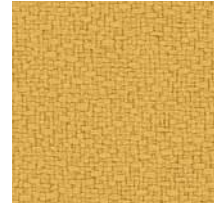
Vanilla
2130



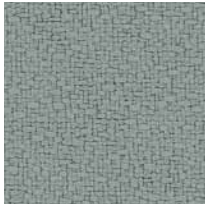
Angora
2035



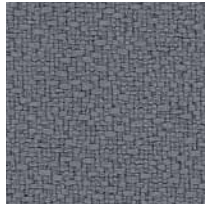
Straw
2034



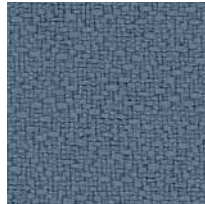
Sunshine
2082



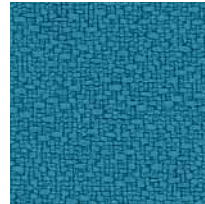
Slate
2017



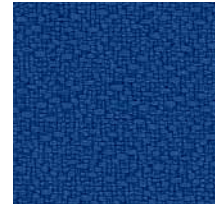
Wolf
2027



Quarry Blue
2026



Waterfall
2691



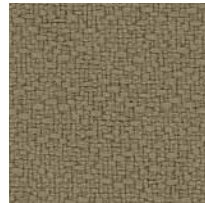
Lapis
2094



Green Olive
2048



Eucalyptus
2047



Cumin
2050



Green Apple
2087



Willow
2028



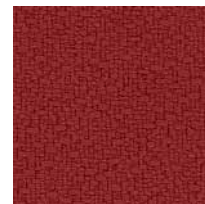
Goldenrod
2090



Amber
2020



Pumpkin
2021



Poppy
2091



Henna
2052



Magenta
2692



Geranium
2084



Red Delicious
2014

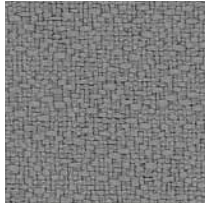


Mulberry
2044

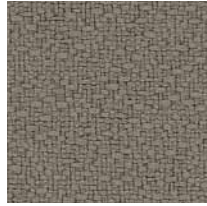


Aubergine
2036

Anchorage 2335



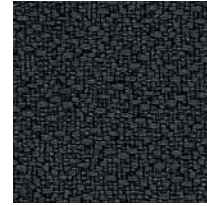
Asteroid
2053



Goose
2049



Fossil
2093



Graphite
2079



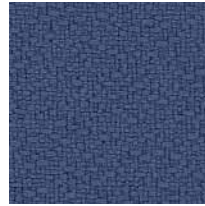
Onyx
2016



Sea
2077



Deep Water
2051



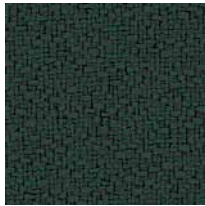
Thistle
2085



Cobalt
2045



Midnight
2025



Pine Needle
2022



Coffee Bean
2083

Anchorage 2335

Panel
Acoustic

Specifications

Content

35% post-consumer recycled polyester
65% pre-consumer recycled polyester

Weight

15.0 ± 1.0 oz./lin. yd.

Width

66" min. useable

Repeat

none

Cleaning Code

W-S

Performance



Colorfastness to Light (AATCC 16 Option 3)
Grade 4 min. at 40 hours



Colorfastness to Crocking (AATCC 8)
Grade 4 min. dry & Grade 3 min. wet



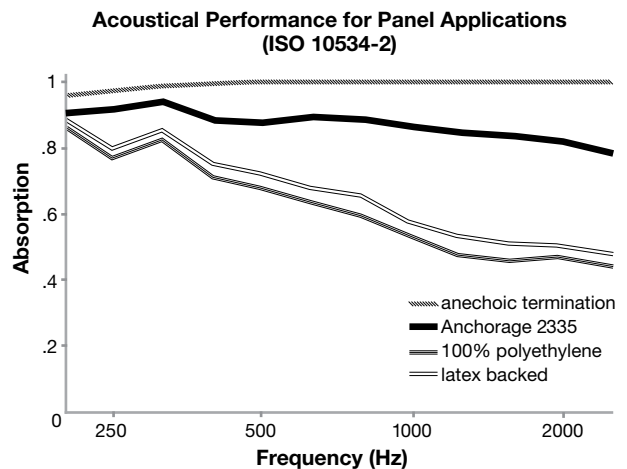
Breaking Strength (ASTM D5034)
275 lbf min. warp and fill



*** Flammability (ASTM E84)**
Class I or A

Acoustical Performance

The plot below summarizes impedance tube measurements of absorption of an anechoic termination and various fabrics in front of the anechoic termination.



NRC of anechoic termination

1.00

NRC of fabric in front of anechoic termination

.85

Miscellaneous

Proudly woven in the USA supporting our local communities. Colors may vary slightly between dye lots. This is a directional fabric. Application testing of this product is recommended. Also available in 54" width (Open House 2334) except color Sea.

Visit guilfordofmaine.com for complete specs and samples.



Terratex is a registered trademark of True Textiles, Inc. and designates fabrics that are made from 100% recycled or compostable material using increasingly sustainable manufacturing practices to produce a high quality product that is recyclable at the end of its useful life.



CO₂ emissions from 100% of the electricity used by the manufacturer to produce this product have been measured and offset in accordance with The CarbonNeutral Protocol.



This pattern is included in the underwriters laboratory panel fabric recognition program. Additional testing of this U.L. recognized component fabric is not required on approved panels from participating manufacturers.

*ACT® registered certification marks.

USA/11-13/ 214A135

WENGER CORPORATION
555 Park Drive, PO Box 448
Owatonna, MN 55060-0448
Phone 800.4WENGER (493-6437)
Fax 507.455.4258
Parts & Service 800.887.7145

WENGER CORPORATION
CANADA OFFICE
Phone 800.268.0148

WORLDWIDE
Phone 1.507.455.4100
Fax 1.507.774.8576

WEB SITE
www.wengercorp.com

Wenger®
Your Performance Partner