

Helios™

Hoist



Helios is an economical, automated hoist ideal for smaller venues and available in fixed or variable speeds. The patent-pending drum and innovative brake design offer a compact solution where space is a premium. Helios' access panel and operation lights provide state-of-the-art diagnostic capabilities with ease-of-use serviceability.

Capability

- Speed: Up to 180 fpm (0.9 m/s)
- Travel: Up to 60 ft. (18.3 m)
- Capacity: Up to 2,000 lbs. (907 kg)
- Wire rope diameter: 3/16" (4.8 mm)

Features

- Secondary braking system
- Load sensing and sophisticated load learning system
- Presets and targeting to allow quick load-ins and setups
- ANSI E1.6 Compliant
- Versatile mounting clamps allow installation utilizing a multitude of structural configurations
- Optional robust backbone
 - Does not impose horizontal forces on building steel
 - Position anywhere lift lines
- Lightweight and compact design
- Easy-open access panels
- Hoists can be mounted vertically or horizontally
- Center to center spacing 16" (406 mm) side by side, 8" (200 mm) offset.



Safety

- **Emergency-stop system** meets NFPA 79 (Electrical Standard for Industrial Machinery) with ramped stops for high speed equipment to reduce mechanical shock loads.
- **Two levels of limit switches** with normal travel and over travel switches using separate, redundant circuits for added safety.

Options

- Load Sensing
- 7 Lines 60' (18.3 m) of travel
- 208V or 480V three phase motor. Other voltages available
- Cable management for electric and other powered sets

Control Options

- Helios works with the entire range of J.R. Clancy motion control systems.

Loft Block Options

- Position anywhere backbone mounted blocks
- Universal Series upright or underhung
- 19 Series underhung

Batten Termination Options

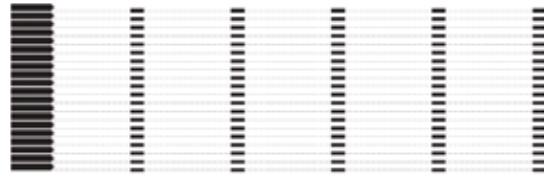
- Trim Chain
- Pipe Clamp and Turnbuckle
- Batten Trim Plate
- Batten Trim Clamp

Batten Options

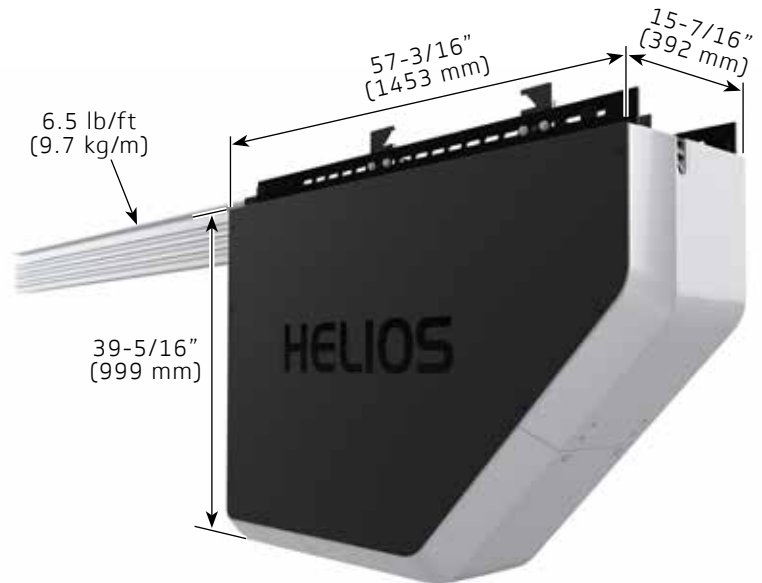
- 1.5" (48 mm) Schedule 40 batten
- 1.5" (48 mm) Schedule 80 batten
- 1.5" (48 mm) Schedule 40 truss batten

Mounting Configurations

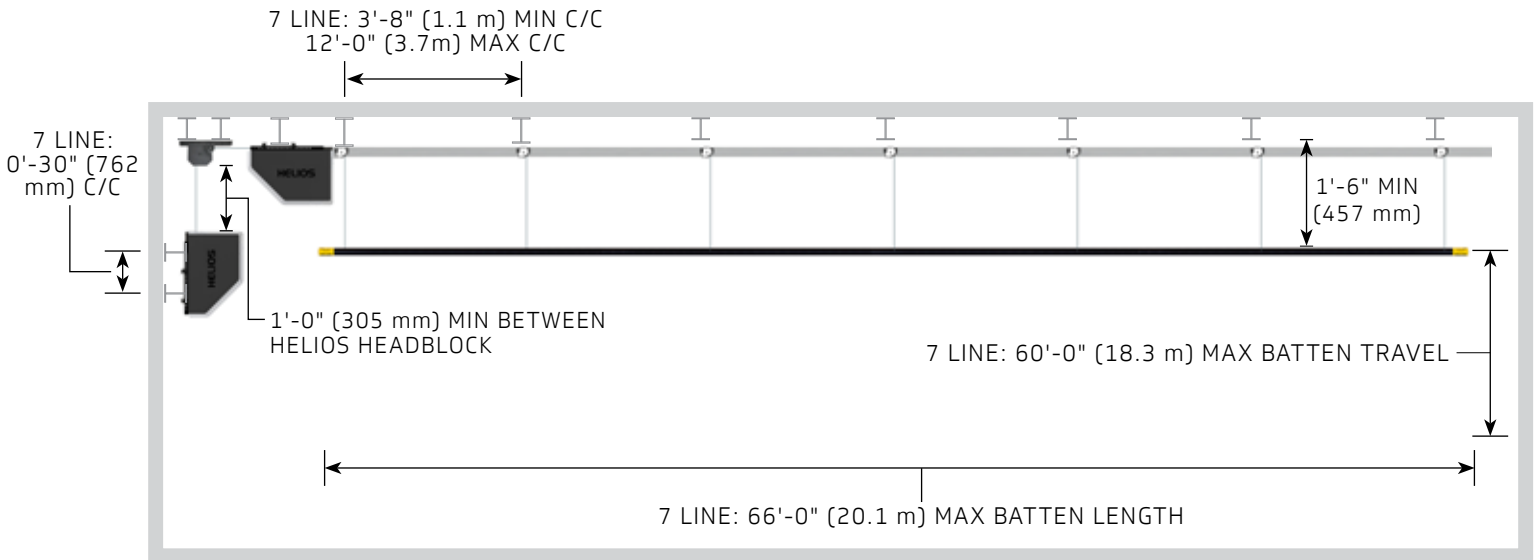
16" (406 mm) Set Centers: All hoists on one side of stage



8" (203 mm) Set Centers: Alternate hoists on both sides of stage



VERTICAL AND HORIZONTAL INSTALLATIONS SHOWN



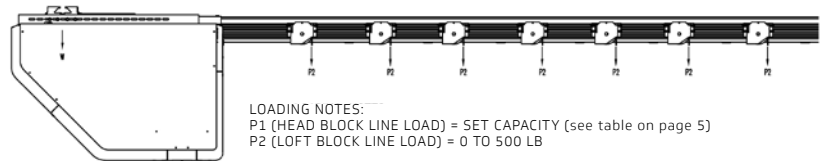
▼

Product CAD files and other documents available for download on our website.

www.jrclancy.com/helios

Loading Information

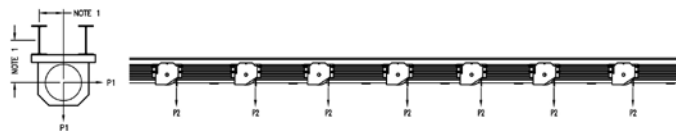
Loft Block: (Typical of 7) The combined load on the loft blocks associated with a single Helios hoist will not exceed the hoist capacity. Loads may be unevenly distributed on the batten with a maximum load of 500 lb (227 kg) on any individual loft block. Hoists are not recommended to be used for lifting people.



HORIZONTAL

LOADING NOTES:
 P1 (HEAD BLOCK LINE LOAD) = SET CAPACITY (see table on page 5)
 P2 (LOFT BLOCK LINE LOAD) = 0 TO 500 LB

1. ALL BLOCK LOADS ACT AT THE BLOCK SHAFT. THE HORIZONTAL AND VERTICAL OFFSET BETWEEN THE BLOCK SHAFT AND SUPPORTING BEAM CENTROID MAY RESULT IN TORSIONAL LOADS ON BEAM.
2. SET CAPACITY (see table on page 5)
3. LIVE LOAD CAPACITY = SET CAPACITY - BATTEN WEIGHT
4. TOTAL LINE LOAD ON ALL LOFT BLOCKS NOT TO EXCEED SET CAPACITY.
5. LINE LOAD ON EACH LOFT BLOCK NOT TO EXCEED LOFT BLOCK CAPACITY (P2).
6. THE TOTAL HOIST CAPACITY MAY NOT BE EQUALLY SHARED BETWEEN BEAMS. THIS WILL BE DEPENDENT UPON A VARIETY OF FACTORS SUCH AS INSTALLATION METHODS, INDIVIDUAL BEAM FLEXIBILITY, ROOF BRACING, ETC.
7. BACKBONE AND BACKBONE ACCESSORIES 8.5 lb/ft (12.7 kg/m).



VERTICAL

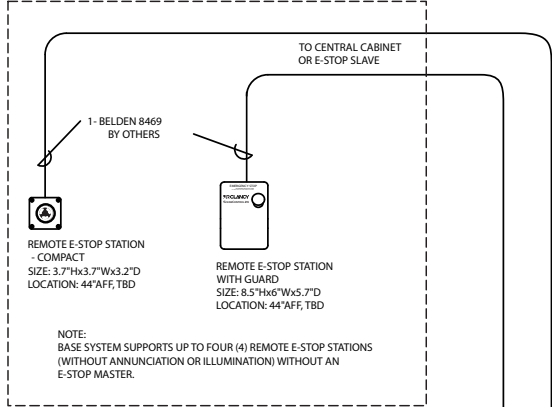
Helios Riser — Typical

CONTROL CONSOLE OPTIONS

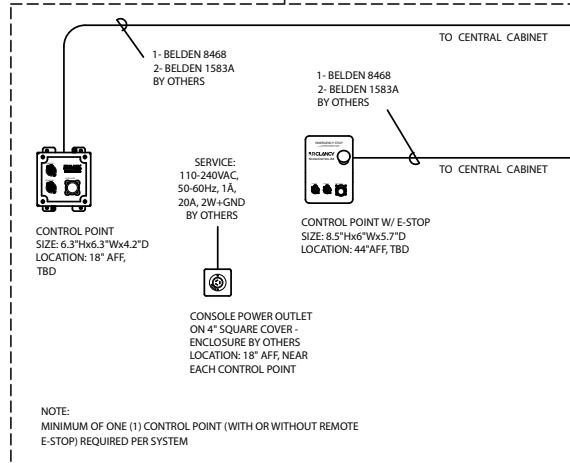


Power and Wiring Information: Helios is available for virtually any 3-phase voltage worldwide. Control wiring is dependent on your control system.

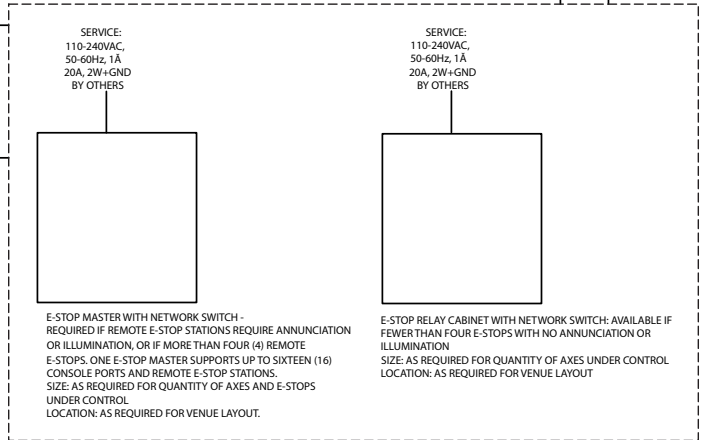
E-STOP STATIONS



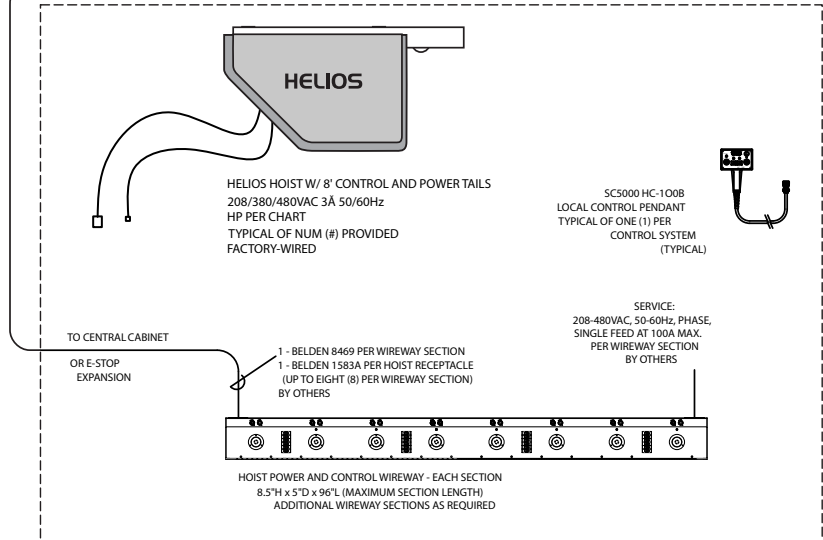
CONTROL POINT(S)



CENTRAL CABINET OPTIONS: ONE (1) REQUIRED



HELIOS HOIST SYSTEM



Helios Electrical Requirements

Model	HP	Current Draw		
		208 V	380 V	480 V
018-H0220	1.6 (1.2 kW)	5.2 A	2.9 A	2.3 A
018-H1212	5.5 (4.1 kW)	16.4 A	8.0 A	7.1 A
018-H1217	8 (6 kW)	22.7 A	12.6 A	10.0 A
018-H1812	8 (6 kW)	22.7 A	12.6 A	10.0 A

Warranty and Support

Three-Year Warranty against defects in materials or workmanship is provided on all J.R. Clancy equipment. Our warranty is contingent on operation by trained personnel and an annual equipment inspection of a J.R. Clancy authorized technician.

24/7 factory technical support with additional service and assistance provided by a worldwide network of J.R. Clancy authorized dealers.

Inspection and maintenance are available through J.R. Clancy's T.I.M.® (Training, Inspection, Maintenance) Program.

Ordering Information

Part Number	Load Speed	Hoist Gross Cap.	Hoist Weight
018-H0220	20 fpm (0.1 m/s)	2,000 lbs. (907 kg)	475 lbs. (216 kg)
018-H1212	0-120 fpm (0-0.6 m/s)	1,200 lbs. (544 kg)	475 lbs. (216 kg)
018-H1217	0-120 fpm (0-0.6 m/s)	1,750 lbs. (794 kg)	650 lbs. (295 kg)
018-H1812	0-180 fpm (0-0.9 m/s)	1,200 lbs. (544 kg)	650 lbs. (295 kg)

Additional Information

For more information on Helios, visit www.jrclancy.com to access:

- Detailed structural loading
- Specifications
- Electrical risers diagrams



© 2018 Wenger Corporation
USA/2018-06/W



WENGER CORPORATION Phone 800.4WENGER (493-6437) Worldwide +1.507.455.4100 | Parts & Service 800.887.7145 | Canada Office 800.268.0148 | wengercorp.com
555 Park Drive, PO Box 448 | Owatonna MN 55060-0448

J.R. CLANCY Phone 800.836.1885 Worldwide +1.315.451.3440 | jrclancy.com | 7041 Interstate Island Road | Syracuse NY 13209-9713

GEARBOSS Phone 800.493.6437 | email gearboss@wengercorp.com | gearboss.com | 555 Park Drive, PO Box 448 | Owatonna MN 55060-0448