

Wenger®

C O R P O R A T I O N

J.R. CLANCY HOIST SOLUTIONS



PowerLift®
Hoist



Titan®
Hoist



Varion®
Hoist



PowerAssist®
Hoist



MOTORIZED RIGGING

When it comes to motorized rigging, one hoist does not fit all. When you choose J.R. Clancy, you can select from several models of hoists to meet your creative, technical, and budget requirements. Custom capabilities can also be integrated for unique projects.

PowerLift®

The PowerLift is a zero-fleet, automated hoist available in fixed or variable speeds. Its versatile mounting system enables PowerLift to be installed in virtually any space. It's ideal for many stage hoisting applications including lighting, scenery and shell ceilings.

FEATURES

- Speed: Up to 180 fpm (0.9 m/s)
- Capacity: Up to 2500 lb (907 kg)
- Travel: Up to 7 Lines @ 62 ft (18.9 m), Up to 8 Lines @ 49 ft (14.9 m)
- Max batten length: 76 ft (23.2 m)
- Hoists can be mounted vertically or horizontally
- Compact moving drum allows for a small, efficient hoist
- Wire rope diameter: 3/16" (4.8 mm)
- Optional integrated backbone
- All PowerLift models come standard with load cell and encoder



STANDARD MODELS

Model Number	Hoist Speed ft/min (m/s)	Load Capacity lb (kg)
018-P0225F	20 (0.1)	2500 (1134)
018-P0225V	0-20 (0-0.1)	2500 (1134)
018-P1212V	0-120 (0-0.6)	1200 (544)
018-P1217V	0-120 (0-0.6)	1750 (793)
018-P1225V	0-120 (0-0.6)	2500 (1134)
018-P1812V	0-180 (0-0.9)	1200 (544)
018-P1817V	0-180 (0-0.9)	1750 (793)

Titan®

The Titan is a high-performance hoist for applications requiring large capacity, speed and/or long travel. Titan is a customizable, pre-engineered hoist – it is engineered and manufactured to your requirements, yet provides the economic benefits of an "off-the-shelf" system. Titan's high-capacity and speeds make it ideal for demanding stage hoisting applications including house curtains, lighting, scenery and shell ceilings. When not just any hoist will do, take the step up to Titan.



STANDARD MODELS

Model Number	Hoist Speed fpm (m/s)	Hoist Capacity lb (kg)
018-T0224	20 (0.1)	2400 (1089)
018-T0233	20 (0.1)	3300 (1497)
018-T2022	200 (1.0)	2200 (998)
018-T2030	200 (1.0)	3000 (1361)
018-T2633	260 (1.3)	3300 (1497)
018-T3413	340 (1.7)	1300 (590)
018-T3417	340 (1.7)	1750 (794)
018-T4022	400 (2.0)	2200 (998)
018-T6514	650 (3.3)	1400 (635)

FEATURES

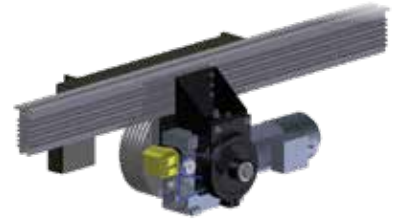
- Speed: Up to 650 fpm (3.3 m/s)
- Capacity: Up to 3300 lb (1496 kg)
- Travel: Up to 8 lines @ 90 ft (27.4 m)
Up to 10 lines @ 67 ft (20.4 m)
- Max batten length: 96 ft (29.3 m)
- A complete suite of safety features
- Can be mounted vertically or horizontally
- Wire rope diameter: 1/4" (6.3 mm)

Varion®

The Varion® Hoist can be mounted on any existing infrastructure, including a building's bar joist, without causing horizontal stresses on the structure. Use it for electrics, curtains, drops or front-of-house stage lighting or speakers. Compact, the hoist's motor can fit at almost any point on Varion's robust backbone. Loft blocks can be mounted almost anywhere on the beam, so they can fit around specific objects or be placed to coincide with openings. Even maintenance is easy: The hoist's open design provides ready access, allowing technicians to maintain and inspect the hoist. Check our website for various Varion motor assembly configurations and hoist accessories.

FEATURES

- Speed: 15 fpm fixed (0.08 m/s)
- Capacity: Up to 1500 lb (680 kg)
- Travel: Up to 50' (15.2 m)
- Max batten length: Up to 45' (13.7 m)
- Wire rope diameter: 3/16" (5 mm)
- Safety features: Hoist overload detection and over speed brake



STANDARD MODEL

Model Number	Hoist Speed fpm (m/s)	Hoist Capacity lb (kg)
018-1718	15 (0.08)	1500 (680)

PowerAssist®

Convert your manual rigging sets to an automated system simply and economically with PowerAssist. A simple, pushbutton control station with reversing starter replaces your rope lock. PowerAssist can also be used with the full line of J.R. Clancy motion control consoles.

FEATURES

- Speed: 25 fpm fixed (0.13 m/s)
- Capacity: Up to 2000 lb (907 kg)
w/o the need to adjust weights
- Travel: Varies based on building
- Max batten length: As required
- Can be used on single or double purchase sets
- Ideal for retrofit or new construction

STANDARD MODELS

Model Number	Hoist Speed fpm (m/s)	Hoist Capacity lb (kg)
018-PA Single Purchase	25 (0.13)	2000 (907)
018-PADP Double Purchase	25 (0.13)	2000 (907)



CUSTOM HOISTS

When you have a hoist requirement that is not solved by a standard solution, we can create a custom J.R. Clancy hoist to meet your specific needs. With a near limitless range of options rest assured that we can design, manufacture and install a system just for you.



Line Shaft

Line Shaft hoists offer a wide range of speeds and capacities, lift lines and travel making them versatile performers. These hoists virtually eliminate side loading on the building structure caused by the rigging and can be excellent choices for retrofits in older buildings.



Drum

Drum hoists are the simplest and most widely used motorized hoists. They are usually a dead haul hoist, where the entire load is supported by the hoist without the use of counterweight.



Pile-Up

Pile-up or Yo-yo hoists allow the lift line to wrap on top of itself in a narrow slot. This type of hoist is normally used for low loads in applications such as banner hoists. They may also be used when there are space problems that preclude the use of drum type hoists.

	PowerLift® Hoist	Titan® Hoist	Varion® Hoist	PowerAssist® Hoist
Models Speed/ Capacity	<ul style="list-style-type: none"> ■ 20 ft/min / 2500 lb (0.1 m/s / 1134 kg) ■ 0-20 ft/min / 2500 lb (0-0.1 m/s / 1134 kg) ■ 0-120 ft/min / 1200 lb (0-0.6 m/s / 544 kg) ■ 0-120 ft/min / 1750 lb (0-0.6 m/s / 793 kg) ■ 0-120 ft/min / 2500 lb (0-0.6 m/s / 1134 kg) ■ 0-180 ft/min / 1200 lb (0-0.9 m/s / 544 kg) ■ 0-180 ft/min / 1750 lb (0-0.9 m/s / 793 kg) 	<ul style="list-style-type: none"> ■ 20 ft/min / 2400 lb (0.1 m/s / 1089 kg) ■ 20 ft/min / 3300 lb (0.1 m/s / 1497 kg) ■ 200 ft/min / 2200 lb (1.0 m/s / 998 kg) ■ 200 ft/min / 3000 lb (1.0 m/s / 1361 kg) ■ 260 ft/min / 3000 lb (1.3 m/s / 1361 kg) ■ 40 ft/min / 1300 lb (1.7 m/s / 590 kg) ■ 340 ft/min / 1750 lb (1.7 m/s / 794 kg) ■ 400 ft/min / 2200 lb (2.0 m/s / 998 kg) ■ 650 ft/min / 1400 lb (3.3 m/s / 635 kg) 	<ul style="list-style-type: none"> ■ 15 ft/min / 1500 lb (0.08 m/s / 680 kg) 	<ul style="list-style-type: none"> ■ 25 ft/min / 2000 lb (0.13 m/s / 907 kg) Single or double purchase
Travel	<ul style="list-style-type: none"> ■ Up to 7 Lines @ 62' (18.9 m) ■ Up to 8 Lines @ 49' (14.9 m) 	<ul style="list-style-type: none"> ■ Up to 8 lines @ 90' (27.4 m) ■ Up to 10 lines @ 67' (20.4 m) 	<ul style="list-style-type: none"> ■ Up to 50' (15.2 m) 	Unlimited. Varies based on building
# of lift lines	Up to 8	Up to 10	Up to 5	N/A
Wire rope diameter	3/16"	1/4"	3/16"	N/A
Load sensing	Yes	Option	Overload protection	No
Encoder	<ul style="list-style-type: none"> ■ Standard ■ Optional absolute upgrade 	Standard	Optional	Optional
Max. Batten Length*	76' (23.2 m)	96' (29.3 m)	45' (13.7 m)	As required
Minimum Set Spacing (Center to Center)	11" (279 mm) Inline 8" (203 mm) Offset	14" (356 mm) Inline 8" (203mm) Offset	21" (533 mm) Inline 10" (254 mm) Offset	6" (152 mm) Adjacent to manual sets
Steel Spacing	Up to 12' (3.66 m)	Up to 12' (3.66 m)	Up to 15' (4.57 m)	As required
Integrated Backbone	Optional	N/A	Optional	N/A
Mounting Options	Underhung, vertical or upright	Underhung, vertical or upright	Underhung	N/A

* Assumes 1.5" (38 mm) schedule 40 pipe batten with 10' (3048 mm) lift line spacing and 3' (914 mm) of overhang on each side



© 2024 Wenger Corporation
USA/4-24/250/W/LT0150K



CORPORATION

Minnesota Location Wenger Phone 800.4WENGER (493-6437) Wenger Worldwide +1.507.455.4100 | Parts & Service 800.887.7145 | wengercorp.com
GearBoss Phone 800.493.6437 | gearboss.com
555 Park Drive, PO Box 448 | Owatonna | MN 55060

New York Location JR Clancy Phone 800.836.1885 JR Clancy Worldwide +1.315.451.3440 | jrclancy.com | 7041 Interstate Island Road | Syracuse | NY 13209

Brands of Wenger Corporation



Follow us on Social Media

