

FR701® 2100



Eggshell
144



Pearl
481



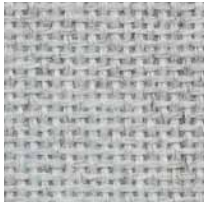
Opal
394



Desert Sand
758



Wheat
130



Silver Papier
538



Blue Neutral
401



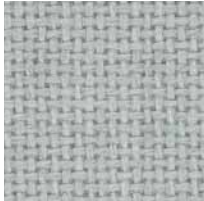
Blue Papier
539



Cement Mix
750



Silver Neutral
406



Coin
794



Verte Papier
561



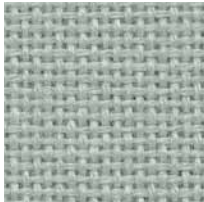
Green Neutral
402



Lake
756



Crystal Blue
175



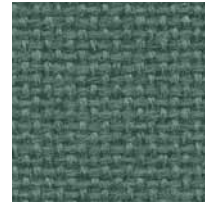
Eucalyptus
468



Leaf
755



Stream
757



Blue Spruce
467



Aquamarine
381



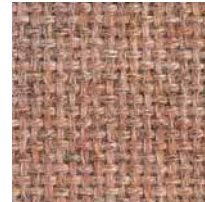
Quartz
380



Apricot Neutral
404



Cherry Neutral
400



Cinnabar
422



Pumice
423

FR701® 2100



Buff
460



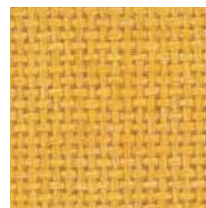
Bone
748



Vanilla Neutral
403



Straw
747



Sunshine
797



Grey Mix
238



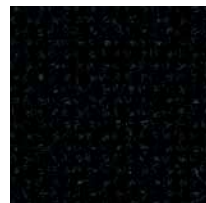
Steel Grey
471



Flannel
795



Medium Grey
298



Black
408



Bayberry
486



Wedgewood
150



Cobalt
420



Baltic
153



Blue Plum
553



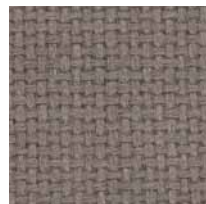
Dune
749



Light Moss
754



Earth
792



Moleskin
796



Chocolate
793



Red
799



Claret Accent
418



Deep Burgundy
556



Amethyst
424



Iris
798



Your Performance Partner

Wenger Corporation

555 Park Drive, P.O. Box 448
Owatonna, MN 55060-0448

Phone 800-4WENGER (800-493-6437)
Fax 507-455-4258

FR701® 2100

Panel

Specifications

Content

100% post-consumer recycled polyester

Weight

16.0 ± 0.5 oz./lin. yd.

Width

66" min. useable

Repeat

none

NRC of anechoic termination

1.00

NRC of fabric in front of anechoic termination

.95

Cleaning Code

W-S

Performance



Colorfastness to Light (AATCC 16 Option 3)

Grade 4 min. at 40 hours



Colorfastness to Crocking (AATCC 8)

Grade 4 min. dry & Grade 3 min. wet



Breaking Strength (ASTM D5034)

150 lbf min. warp and fill



* Flammability (ASTM E84)

Class I or A

Miscellaneous

Colors may vary slightly between dye lots.

This is a non-directional fabric.

Application testing of this product is recommended.



Guilford of Maine®

Visit guilfordofmaine.com for complete specs and samples.



Terratex is a registered trademark of True Textiles, Inc. and designates fabrics that are made from 100% recycled or compostable material using increasingly sustainable manufacturing practices to produce a high quality product that is recyclable at the end of its useful life. (terratex.com)



CO₂ emissions from 100% of the electricity used by the manufacturer to produce this product have been measured and offset in accordance with The CarbonNeutral Protocol.



This pattern is included in the underwriters laboratory panel fabric recognition program. Additional testing of this U.L. recognized component fabric is not required on approved panels from participating manufacturers.

*ACT® registered certification marks.