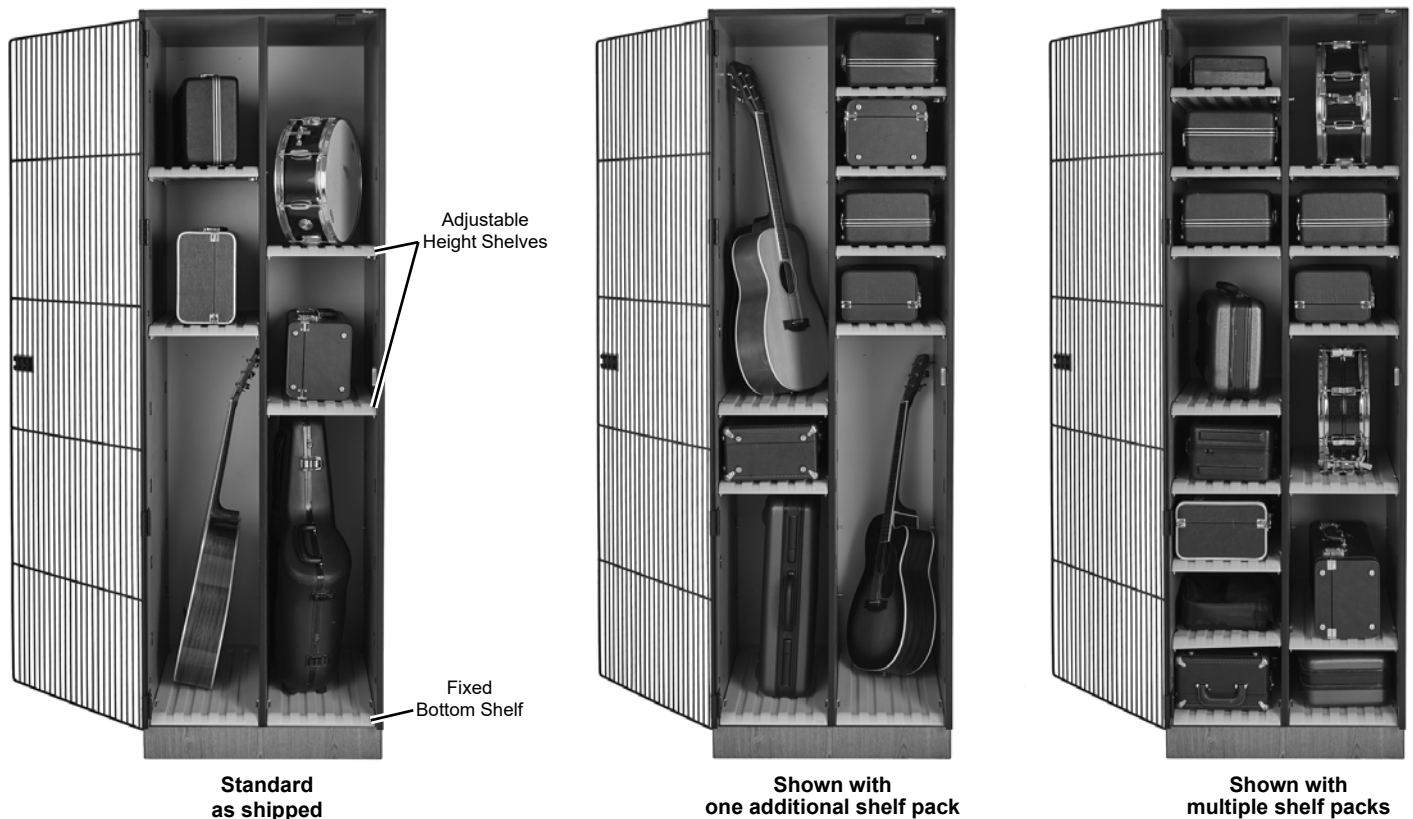


Adjustable Shelf Storage Option

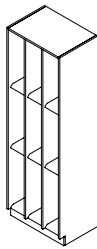
- Offered for Wenger UltraStor® and AcoustiCabinets®.
- Available in multiple heights and widths in a variety of single, double and triple column configurations.
- Each cabinet includes one fixed bottom shelf and two adjustable height shelves per column.
Additional shelf packs are available.
Each shelf pack will complete one row (one shelf for each column).
 - 84" (2134 mm) tall cabinets can fit up to eight adjustable shelves, creating up to nine compartments in each column.
 - 68" (1727 mm) tall cabinets can fit up to six adjustable shelves, creating up to seven compartments in each column.
- Patented grooved shelves are blow-molded polyethylene and allow air to circulate.
- Patent pending adjustable height shelf uses a swing pin and latch design.
- Door options:
 - Full-length wood door - same construction as wall panels.
 - Full-length straight grille door - 3/16" (5 mm) diameter welded steel grille construction with powder-coat paint finish.
 - Full-length waterfall grille doors - 1/4" (6 mm) diameter welded steel grille construction with powder-coat paint finish.
 - No door.
- Wall panels are 3/4" (19 mm) thick industrial grade composite wood with no added formaldehyde and polyester laminate finish in Wenger standard colors.
- Edging is 1/8" (3 mm) radiused PVC.
- Cabinets have four or five adjustable steel leveling glides for uneven floors.
- Doors include heavy-duty 5-knuckle institutional ANSI/BHMA A156.9, Grade 1 hinge, through-bolted to cabinet wall.
- Lockable doors are designed for padlocks with 3/4" (19 mm) maximum vertical shackle clearance.
- Cabinets are shipped fully assembled for widths under 48" (1219 mm).
- UL GREENGUARD Certified - Product certified for low chemical emissions: ul.com/gg - UL 2818.
- Environmental attributes and LEED compliance for these products can be found at www.wengercorp.com/GREEN or by contacting your Wenger representative.
- Ten-year warranty.



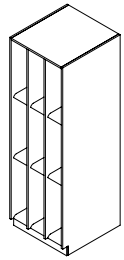
NOTE: Doors must be included at the time of ordering as they cannot be installed later.

Dimensions and compartment sizes on the next page.

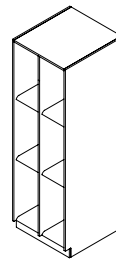
84" (2134 mm) Heights



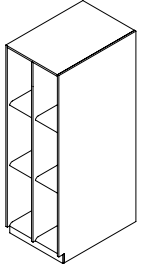
#70
Cabinet size:
 27-1/2" w x 19-1/4" d x 85-5/8" h
 (699 x 489 x 2175 mm)
 282 lbs (128 kg)
Available in narrow cabinet width:
 21-1/2" (546 mm)
Compartment sizes:
 8" w x 17-3/8" d (203 x 441 mm)
Compartment Height range:
 7-5/8" to 78-1/8" h (194 to 1984 mm)
Narrow compartment width:
 6" (152 mm)



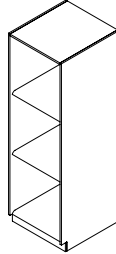
#71
Cabinet size:
 27-1/2" w x 29-1/4" d x 85-5/8" h
 (699 x 743 x 2175 mm)
 367 lbs (166 kg)
Available in narrow cabinet width:
 21-1/2" (546 mm)
Compartment sizes:
 8" w x 27 3/8" d (203 x 695 mm)
Compartment Height range:
 7-5/8" to 78-1/8" h (194 to 1984 mm)
Narrow compartment width:
 6" (152 mm)



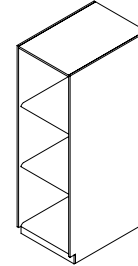
#72
Cabinet size:
 27-1/2" w x 29-1/4" d x 85-5/8" h
 (699 x 743 x 2175 mm)
 313 lbs (142 kg)
Available in narrow cabinet width:
 21-1/2" (546 mm)
Compartment sizes:
 12-3/8" w x 27-3/8" d (314 x 695 mm)
Compartment Height range:
 7-5/8" to 78-1/8" h (194 to 1984 mm)
Narrow compartment width:
 9-3/8" (238 mm)



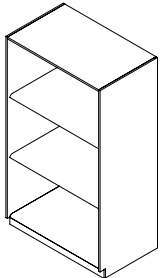
#73
Cabinet size:
 27-1/2" w x 39-1/4" d x 85-5/8" h
 (699 x 997 x 2175 mm)
 383 lbs (173 kg)
Available in narrow cabinet width:
 21-1/2" (546 mm)
Compartment sizes:
 12-3/8" w x 37-3/8" d (31 x 95 mm)
Compartment Height range:
 7-5/8" to 78-1/8" h (194 to 1984 mm)
Narrow compartment width:
 9-3/8" (238 mm)



#74
Cabinet size:
 27-1/2" w x 29-1/4" d x 85-5/8" h
 (699 x 743 x 2175 mm)
 248 lbs (112 kg)
Available in narrow cabinet width:
 21-1/2" (546 mm)
Compartment sizes:
 25-1/2" w x 27-3/8" d (648 x 695 mm)
Compartment Height range:
 7" to 78-1/8" h (178 to 1984 mm)
Narrow compartment width:
 19-1/2" (495 mm)

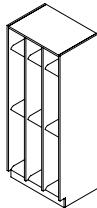


#75
Cabinet size:
 27-1/2" w x 39-1/4" d x 85-5/8" h
 (699 x 997 x 2175 mm)
 297 lbs (135 kg)
Available in narrow cabinet width:
 21-1/2" (546 mm)
Compartment sizes:
 25-1/2" w x 37-3/8" d (648 x 949 mm)
Compartment Height range:
 7" to 78-1/8" h (178 to 1984 mm)
Narrow compartment width:
 19-1/2" (495 mm)

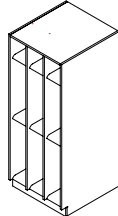


#76
Cabinet size:
 48-1/2" w x 29-1/4" d x 85-5/8" h
 (1232 x 743 x 2175 mm)
 282 lbs (105 kg)
Compartment sizes:
 46-1/2" w x 27-3/8" d (1181 x 695 mm)
Compartment Height range:
 6-7/16" to 76-3/8" h (164 to 1940 mm)

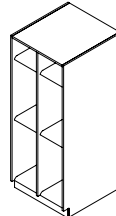
68" (1727 mm) Heights



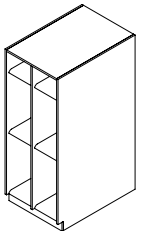
#77
Cabinet size:
 27-1/2" w x 19-1/4" d x 69-3/4" h
 (699 x 489 x 1772 mm)
 315 lbs (143 kg)
Available in narrow cabinet width:
 21-1/2" (546 mm)
Compartment sizes:
 8" w x 17-3/8" d (203 x 441 mm)
Compartment Height range:
 7-7/8" to 62-1/4" h (200 to 1581 mm)
Narrow compartment width:
 6" (152 mm)



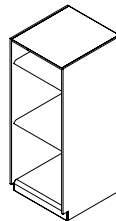
#78
Cabinet size:
 27-1/2" w x 29-1/4" d x 69-3/4" h
 (699 x 743 x 1772 mm)
 299 lbs (136 kg)
Available in narrow cabinet width:
 21-1/2" (546 mm)
Compartment sizes:
 8" w x 27 3/8" d (203 x 695 mm)
Compartment Height range:
 7-7/8" to 62-1/4" h (200 to 1581 mm)
Narrow compartment width:
 6" (152 mm)



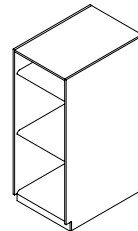
#79
Cabinet size:
 27-1/2" w x 29-1/4" d x 69-3/4" h
 (699 x 743 x 1772 mm)
 256 lbs (116 kg)
Available in narrow cabinet width:
 21-1/2" (546 mm)
Compartment sizes:
 8" w x 27 3/8" d (203 x 695 mm)
Compartment Height range:
 12-3/8" to 62-1/4" h (314 to 1581 mm)
Narrow compartment width:
 9-3/8" (238 mm)



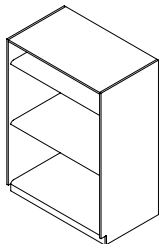
#80
Cabinet size:
 27-1/2" w x 39-1/4" d x 69-3/4" h
 (699 x 997 x 1772 mm)
 302 lbs (137 kg)
Available in narrow cabinet width:
 21-1/2" (546 mm)
Compartment sizes:
 12-3/8" w x 37-3/8" d (314 x 95 mm)
Compartment Height range:
 7-7/8" to 62-1/4" h (200 to 1581 mm)
Narrow compartment width:
 9-3/8" (238 mm)



#81
Cabinet size:
 27-1/2" w x 29-1/4" d x 69-3/4" h
 (699 x 743 x 1772 mm)
 195 lbs (88 kg)
Available in narrow cabinet width:
 21-1/2" (546 mm)
Compartment sizes:
 8" w x 27 3/8" d (203 x 695 mm)
Compartment Height range:
 7-7/8" to 62-1/4" h (200 to 1581 mm)
Narrow compartment width:
 19-1/2" (495 mm)



#82
Cabinet size:
 27-1/2" w x 39-1/4" d x 69-3/4" h
 (699 x 997 x 1772 mm)
 242 lbs (110 kg)
Available in narrow cabinet width:
 21-1/2" (546 mm)
Compartment sizes:
 25-1/2" w x 27-3/8" d (648 x 695 mm)
Compartment Height range:
 7-5/16" to 62-1/4" h (186 to 1581 mm)
Narrow compartment width:
 19-1/2" (495 mm)



#83
Cabinet size:
 48-1/2" w x 29-1/4" d x 69-3/4" h
 (1232 x 743 x 1772 mm)
 206 lbs (94 kg)
Compartment sizes:
 46-1/2" w x 27-3/8" d (1181 x 695 mm)
Compartment Height range:
 6-7/16" to 60-1/2" h (164 to 1537 mm)

Standard Compartment Sizes are shown without doors.

Wenger

JRCLANCY

GEARBOSS

© 2018 Wenger Corporation
 USA/2018-09/W



WENGER CORPORATION

Phone 800.4WENGER (493-6437) Worldwide +1.507.455.4100 | Parts & Service 800.887.7145 | Canada Office 800.268.0148 | wengercorp.com
 555 Park Drive, PO Box 448 | Owatonna MN 55060-0448

JR CLANCY

Phone 800.836.1885 Worldwide +1.315.451.3440 | jrclancy.com | 7041 Interstate Island Road | Syracuse NY 13209-9713

GEARBOSS

Phone 800.493.6437 | email gearboss@wengercorp.com | gearboss.com | 555 Park Drive, PO Box 448 | Owatonna MN 55060-0448