

# Studio<sup>®</sup> Makeup Station — 36" Model

The Wenger Studio Makeup Station will provide performers with a correct and convenient environment for applying makeup and creating other visual effects. The Studio Makeup Station components include a generous counter, a large mirror, a reflective storage shelf, untainted lighting, electrical outlets, and a tackboard. The Studio Makeup Station is intended to be permanently attached to a wall and hard-wired.

- 187A007 36" Studio Makeup Station, nine lights with white accent panels
- 187A008 36" Studio Makeup Station, six lights with white accent panels.
- Environmental attributes and LEED compliance for this product can be found at [www.wengercorp.com/GREEN](http://www.wengercorp.com/GREEN) or by contacting your Wenger representative.
- Five-year warranty.

### The Counter

- Construction: Medium density fiberboard core and laminate overlay with a stain resistant surface and a matte white finish for light diffusion.
- Features: Rounded upper edges, integral pencil tray.
- Size: 36" wide x 20" deep (914 x 508 mm) with a concave shape for mirror access. 15" (318 mm) from counter edge to mirror surface.
- Load Capacity: 75 lbs (34 kg).
- Work surface is 29" (737 mm) from floor.

### The Mirror

- Construction: High quality glass and silvering laminated to a steel backer to prevent separation of shards if broken.
- Size: 28" (711 mm) square.

### The Mirror Surround

- Construction: Extruded aluminum with white accents. Sheet steel at the base of the mirror.
- Powder-coat paint with a matte white finish for light diffusion.

### The Shelf

- Construction: Medium density fiberboard core and laminate overlay with an easy to clean surface and a matte white finish for light diffusion.
- Size: 36" wide x 12" deep (914 x 305 mm).
- Load Capacity: 25 lbs (114 kg).
- Storage surface is 69" (1753 mm) from floor.

### The Lighting

- Nine medium base sockets provided for 60W incandescents or 15W swirl fluorescents. Bulbs are protected by wire cages made from 3/16" (5 mm) diameter steel wire. Cages are permanently mounted, but allow easy bulb replacement (bulbs not included).

### The Electrics

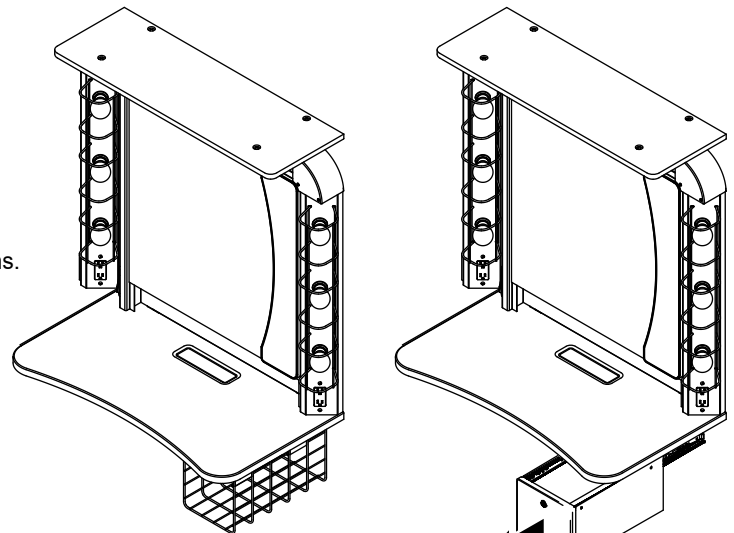
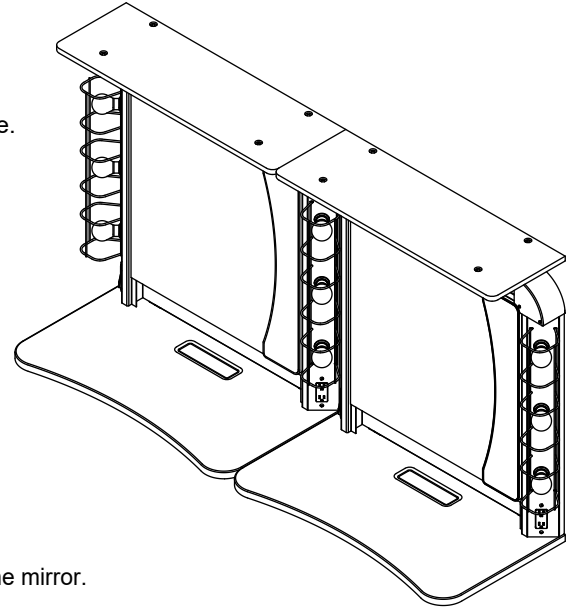
- A rocker type switch is mounted on the lower left side of the mirror surround. It controls the lights only.
- A 20 amp rated duplex outlet with built in GFCI protection is mounted on the lower right side of the mirror surround.
- 24" (610 mm) off flexible conduit and conductors exit the unit beneath the counter, next to the wall.
- **NOTE:** Separate black conductors are provided for lights and outlet to allow circuit design according to anticipated use and local codes.
- Entire product is UL<sup>®</sup> approved.
- A licensed electrician is required to make any electrical connections.

### The Tackboard

- Construction: White tackable surface mounted in a matte white frame.
- Shipped unmounted. May be attached to top, bottom or side of the mirror.
- Size: 6" wide x 28" long (152 x 711 mm).

### The Options

- Available with either under-counter storage cage (187A012) or lockable sliding drawer (187A013).
- Space allows for only one storage option per Studio Makeup Station.



Optional Storage Cage

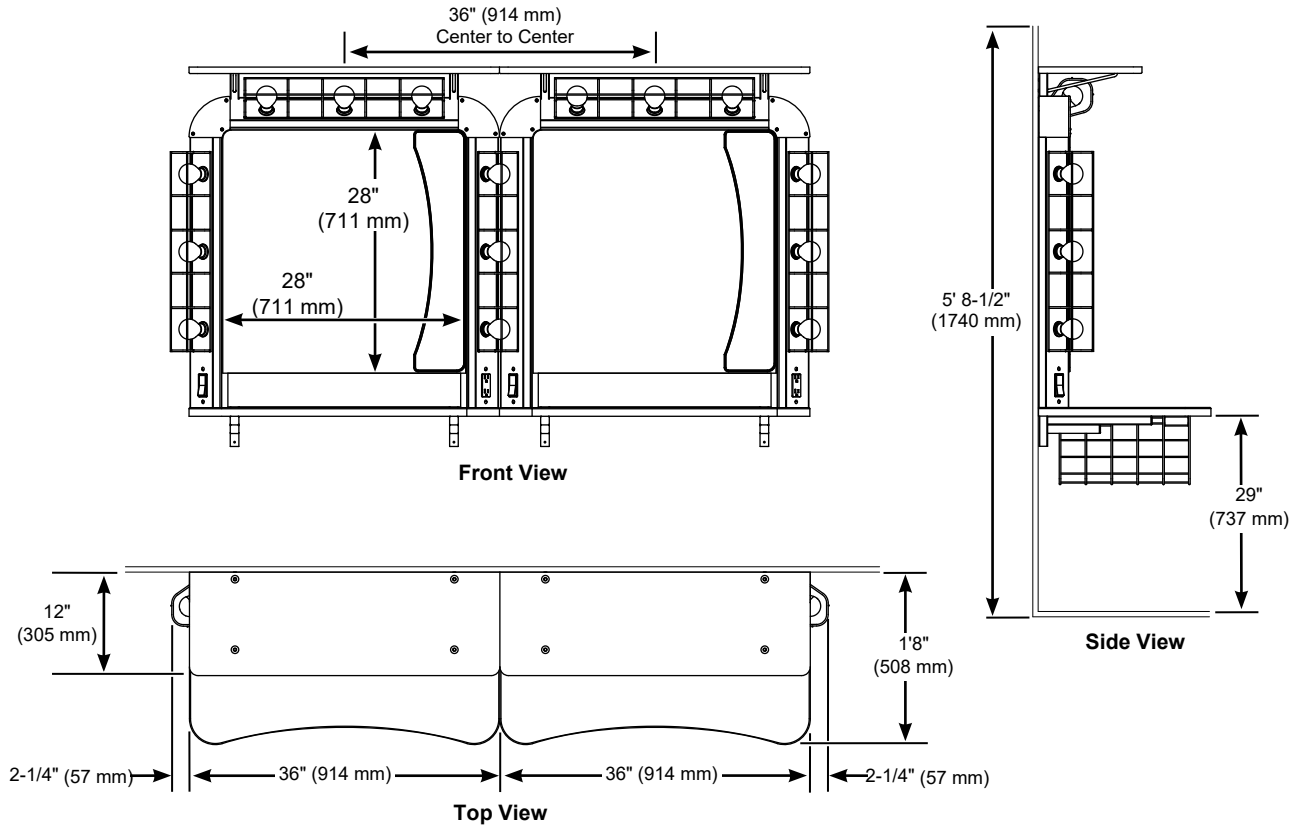
Optional Lockable Sliding Drawer

**Installation**

- Mounting bracket is attached to the wall, Studio Makeup Station is hung on the bracket.
- Mounting bracket includes leveling for multi-unit installation.
- When multiple units are installed, adjacent units share a vertical column of bulbs.

Physical Dimensions:

Overall width: 40-3/8" (1026 mm) (bulb cage-to-bulb cage)  
 Overall height: 44" (1118 mm)  
 Overall depth: 20" (508 mm)  
 Multi-unit spacing: 36" (914 mm) center-to-center  
 Weight: 80 lbs. (36 kg).



© 2018 Wenger Corporation  
 USA/2018-08/W



**WENGER CORPORATION**

Phone 800.4WENGER (493-6437) Worldwide +1.507.455.4100 | Parts & Service 800.887.7145 | Canada Office 800.268.0148 | wengercorp.com  
 555 Park Drive, PO Box 448 | Owatonna MN 55060-0448

**JR CLANCY**

Phone 800.836.1885 Worldwide +1.315.451.3440 | jrclancy.com | 7041 Interstate Island Road | Syracuse NY 13209-9713

**GEARBOSS**

Phone 800.493.6437 | email gearboss@wengercorp.com | gearboss.com | 555 Park Drive, PO Box 448 | Owatonna MN 55060-0448