

Contents

Important User Information	2	Hardware Parts List	3
Required Tools	3	Assembly	4



Visit the Music Lab Workstations web page at www.wengercorp.com.

Note: Please read and understand these instructions before starting the assembly.

Note: Examine the illustrations on the following pages. If you need additional information, contact Wenger Corporation using the information below.

Important User Information

General

Copyright© 2015 by Wenger Corporation

All rights reserved. No part of the contents of this manual may be reproduced, copied, or transmitted in any form or by any means including graphic, electronic, or mechanical methods or photocopying, recording, or information storage and retrieval systems without the written permission of the publisher, unless it is for the purchaser's personal use.

Printed and bound in the United States of America.

The information in this manual is subject to change without notice and does not represent a commitment on the part of Wenger Corporation. Wenger Corporation does not assume any responsibility for any errors that may appear in this manual.

In no event will Wenger Corporation be liable for technical or editorial omissions made herein, nor for direct, indirect, special, incidental, or consequential damages resulting from the use or defect of this manual.

The information in this document is not intended to cover all possible conditions and situations that might occur. The end user must exercise caution and common sense when assembling or installing Wenger Corporation products. If any questions or problems arise, call Wenger Corporation at 1-800-887-7145.

Manufacturer

The Essential Lab Workstation is manufactured by:

Wenger Corporation
555 Park Drive
Owatonna, MN 55060
(800) 4WENGER (493-6437) • +1 (507) 455-4100
www.wengercorp.com

Intended Use

- This product is intended for indoor use in normal ambient temperature and humidity conditions — it must not be exposed to prolonged outside weather conditions.
- This product is intended to be assembled and used only as described in these instructions.

Warranty

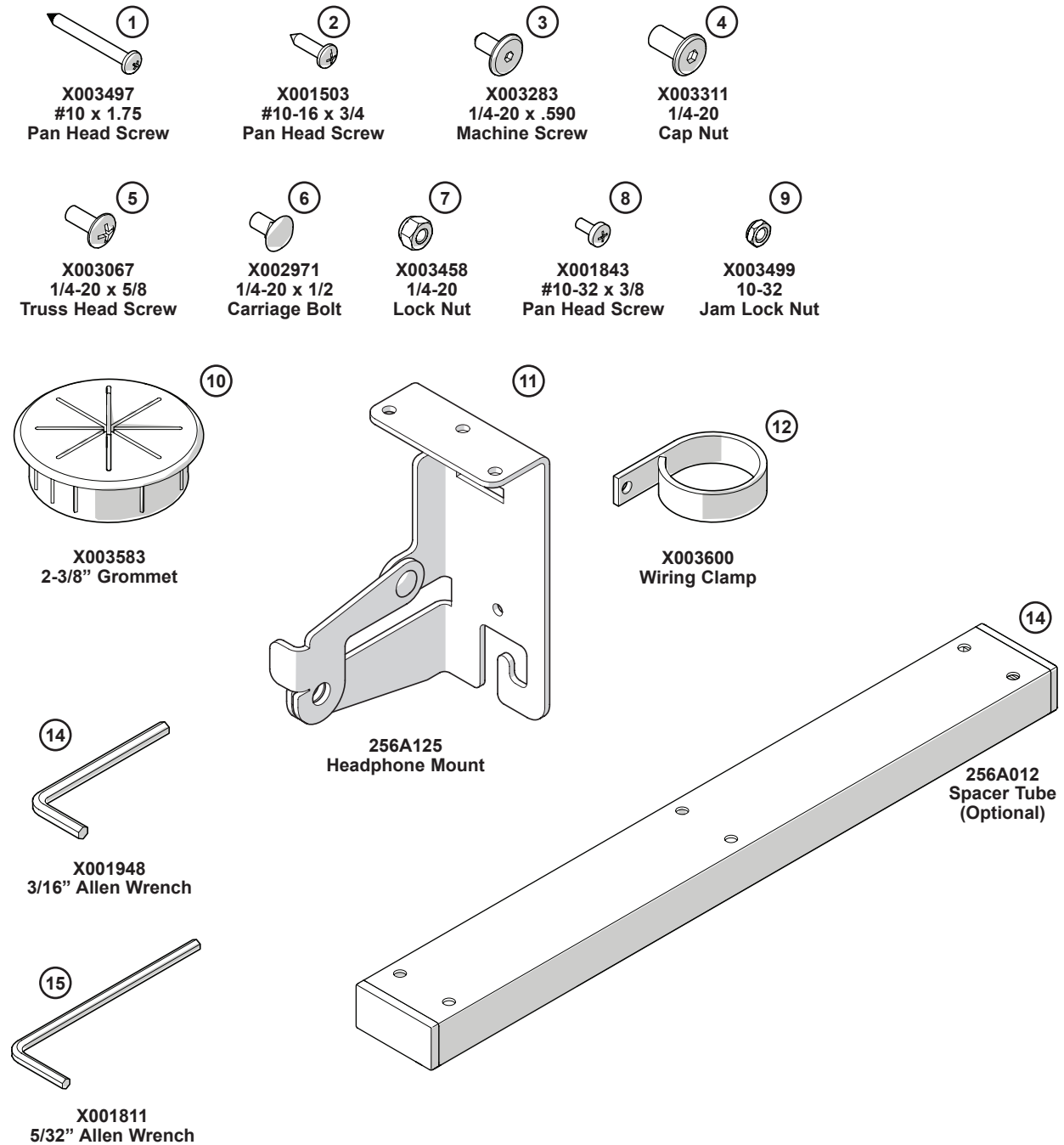
This product is guaranteed free of defects in materials and workmanship for ten full years from date of shipment. A full warranty statement is available upon request.

Optional power strips, digital locks and other electronic equipment are covered by the individual manufacturer's warranty.

Required Tools

- Phillips Head Screwdriver
- 3/8" & 7/16" Open-End Wrenches, or Sockets
- 3/16" Allen Wrench (supplied)
- 5/32" Allen Wrench (supplied)

Hardware Parts List

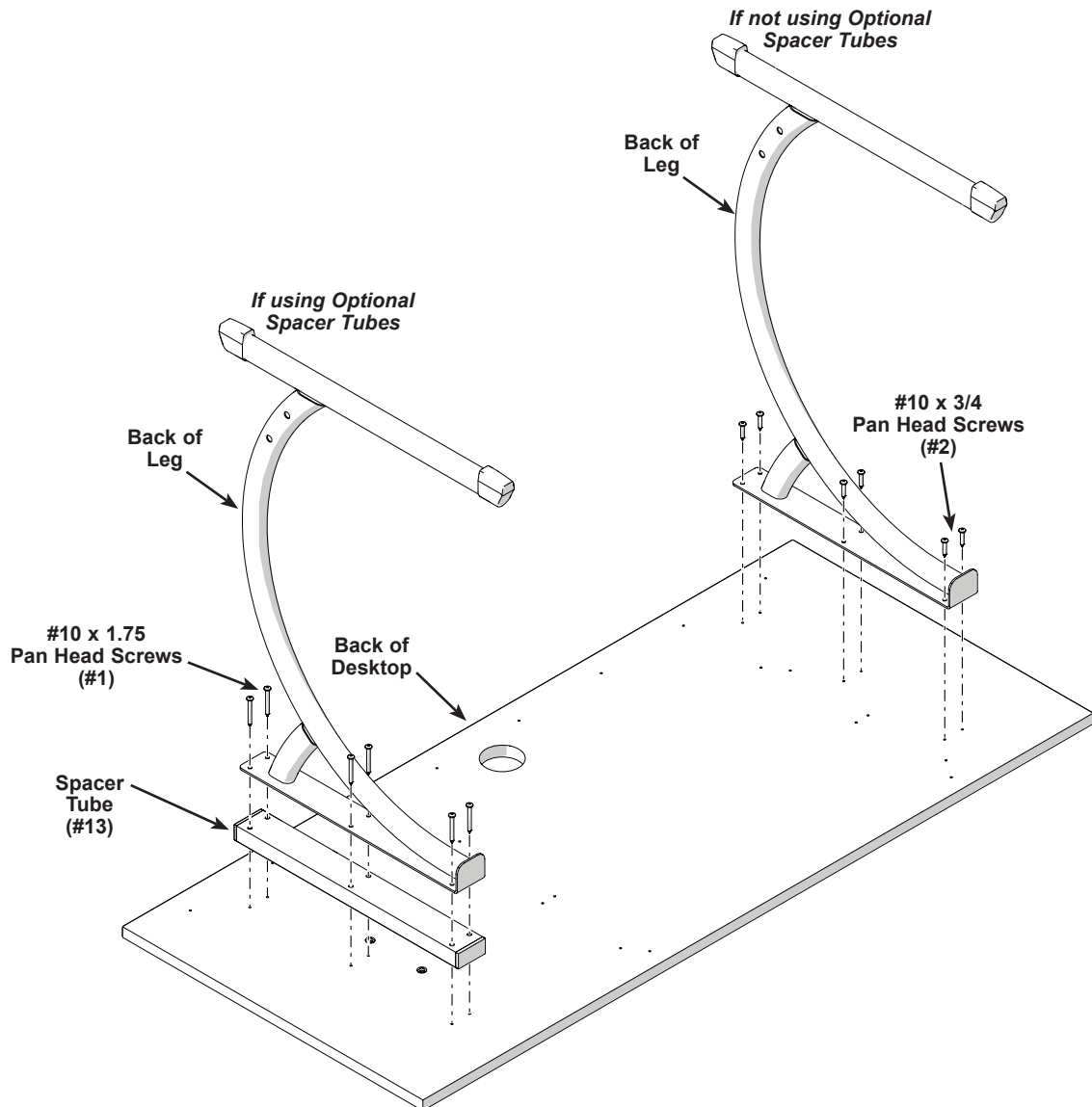


*Quantities may vary, extras can be discarded.

Assembly

1. Lay the Desktop flat on the ground with the pilot holes facing up.
Be careful not to scratch the Desktop surface!
2. Attach the Legs to the bottom of the Desktop in the orientation shown below.
 - a. If including the Optional Spacer Tubes (#13), attach the Legs and Spacer Tubes to the Desktop pilot holes using six #10-16 x 1.75 Pan Head Screws (#1).
 - b. If not attaching the Optional Spacer Tubes, attach the Legs to the Desktop pilot holes using six #10-16 x 3/4 Pan Head Screws (#2).

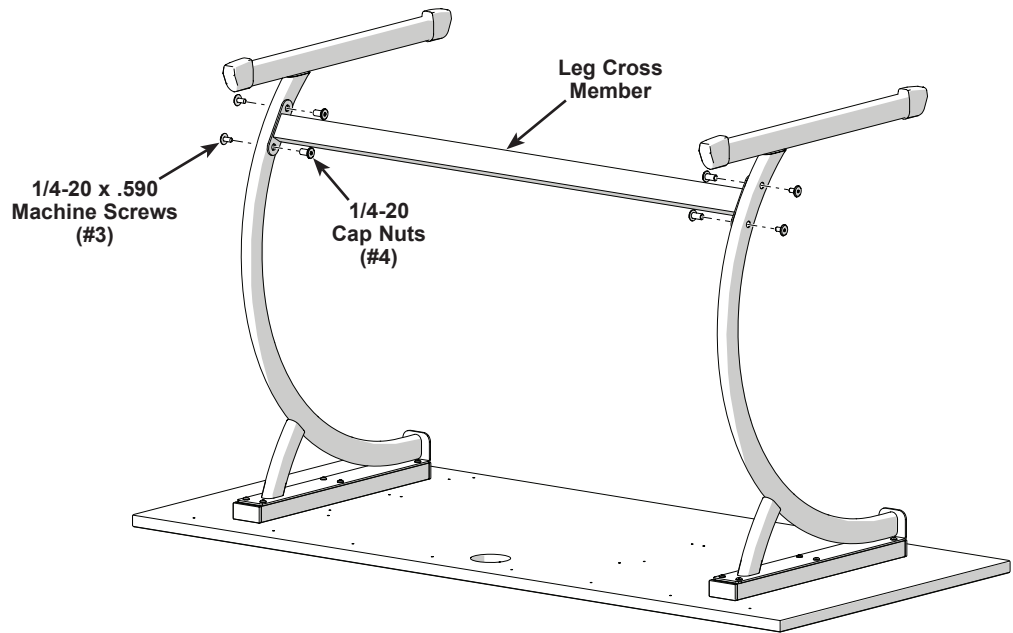
The use of Spacer Tubes must be the same on both Legs.



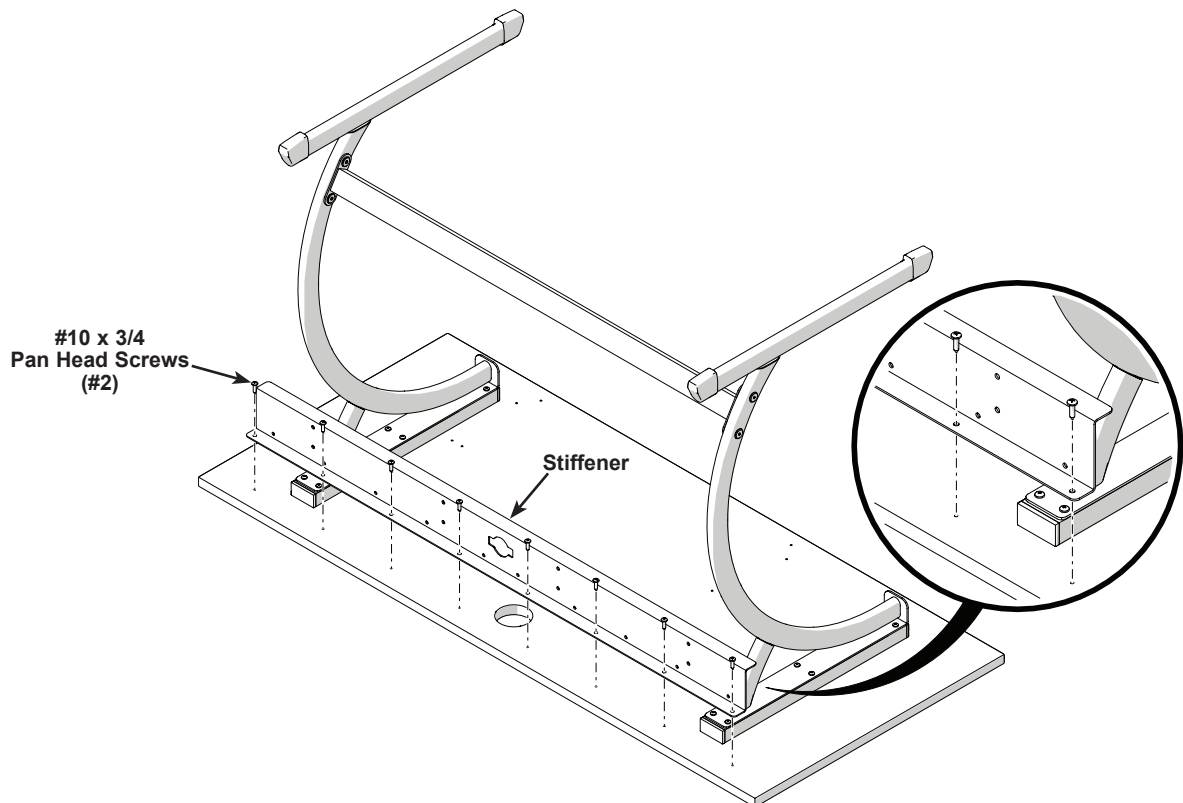
Example only. If optional spacer tubes are used, they must be attached to both legs.

Assembly (continued)

3. Attach the Leg Cross Member to both Legs using two 1/4-20 x .590 Machine Screws (#3) and 1/4-20 Cap Nuts (#5).

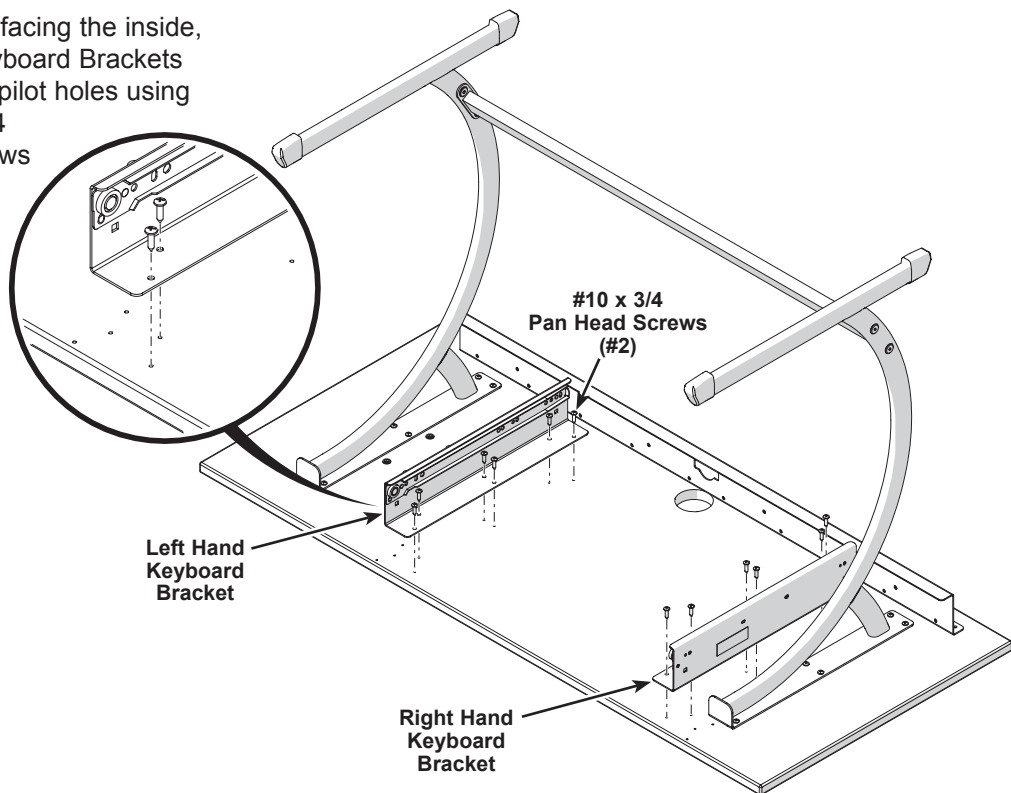


4. Attach the Stiffener to the rear Desktop pilot holes using eight #10-16 x 3/4 Pan Head Screws (#2) as shown.



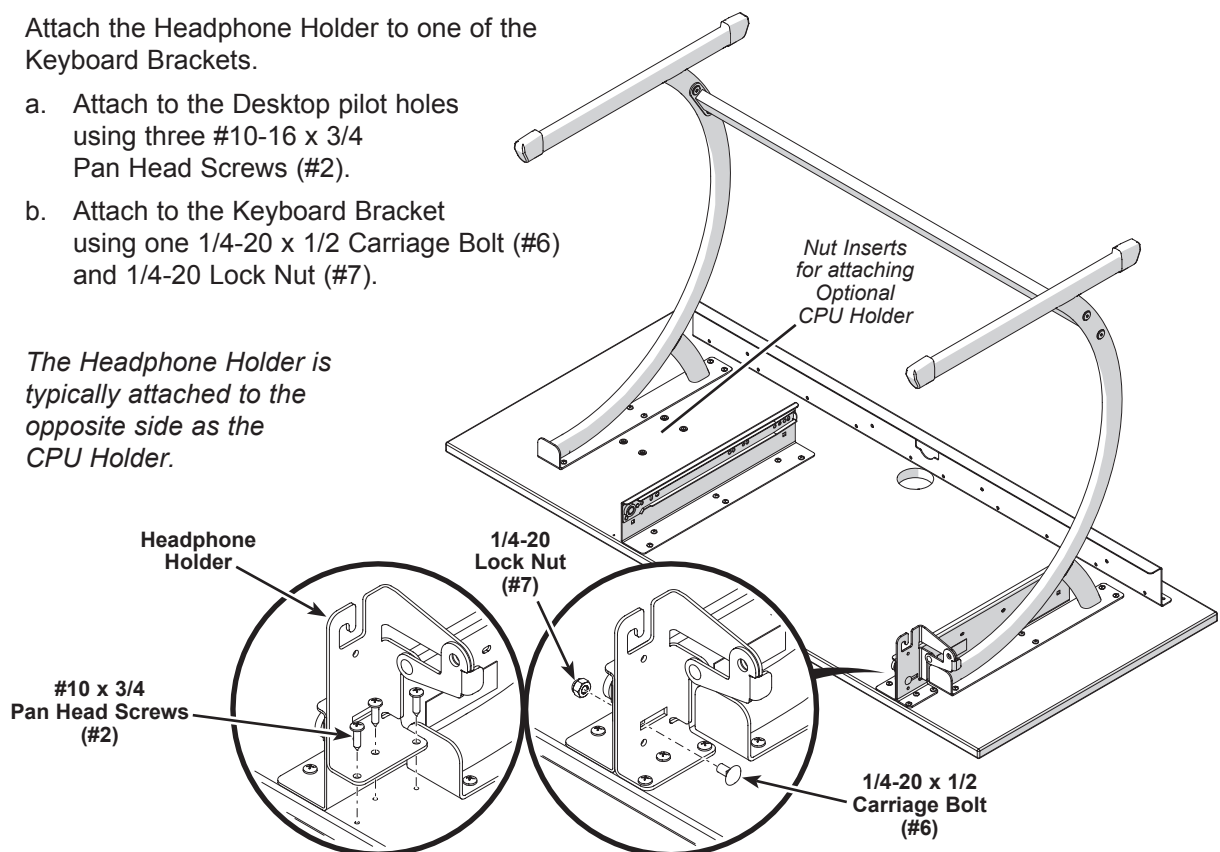
Assembly (continued)

5. With the glides facing the inside, attach both Keyboard Brackets to the Desktop pilot holes using six #10-16 x 3/4 Pan Head Screws (#2) in each as shown.



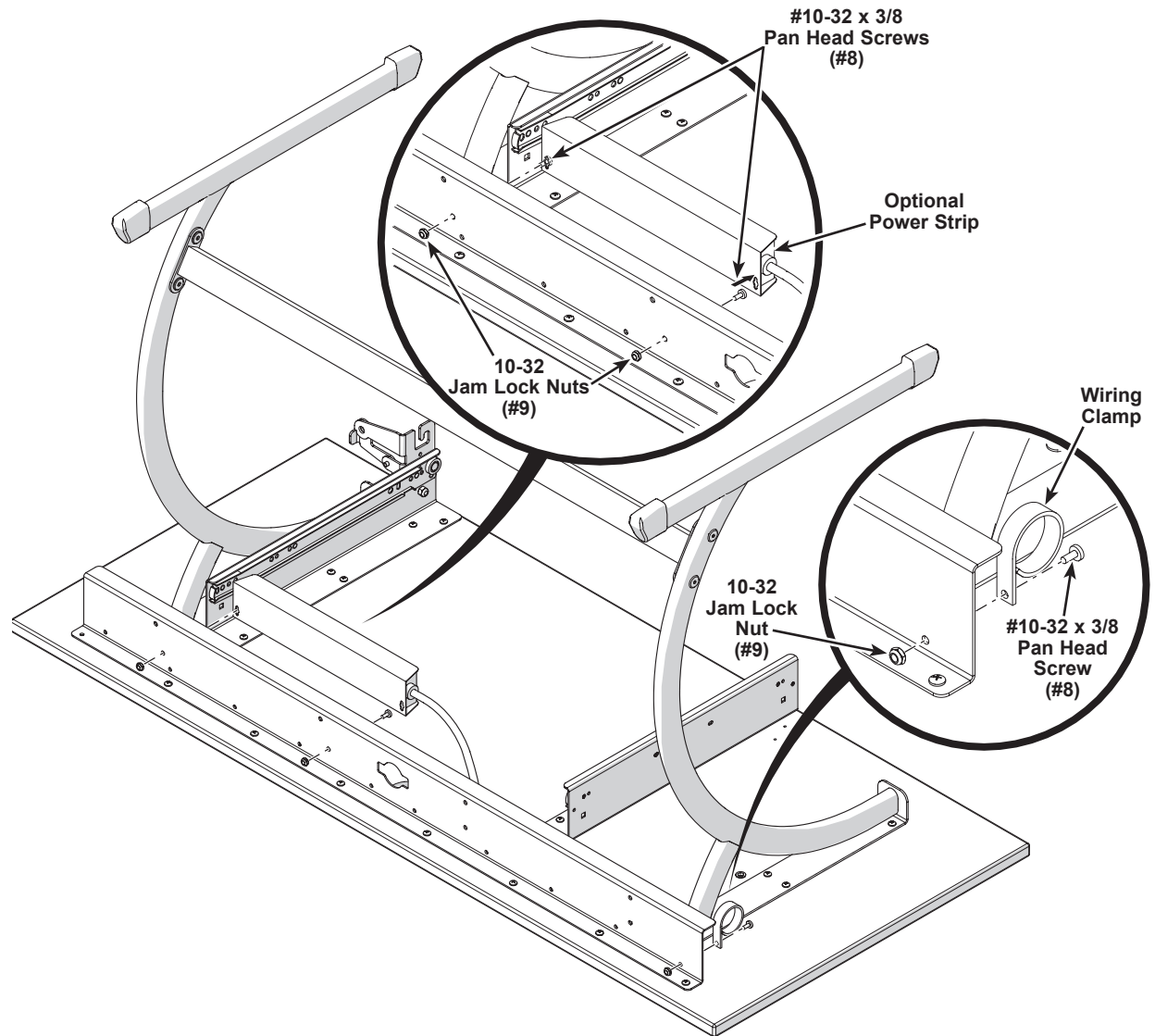
6. Attach the Headphone Holder to one of the Keyboard Brackets.
- Attach to the Desktop pilot holes using three #10-16 x 3/4 Pan Head Screws (#2).
 - Attach to the Keyboard Bracket using one 1/4-20 x 1/2 Carriage Bolt (#6) and 1/4-20 Lock Nut (#7).

The Headphone Holder is typically attached to the opposite side as the CPU Holder.



Assembly (continued)

7. If attaching the optional Power Strip:
 - a. Fit the heads of two #10-32 x 3/8 Pan Head Screws (#8) into the slots in the Power Strip and fit the screws through the holes in the Stiffener as shown.
 - b. Attach a 10-32 Jam Lock Nut (#9) to each screw to secure the power strip to the Stiffener.If not installing a Power Strip, skip ahead to the next step.



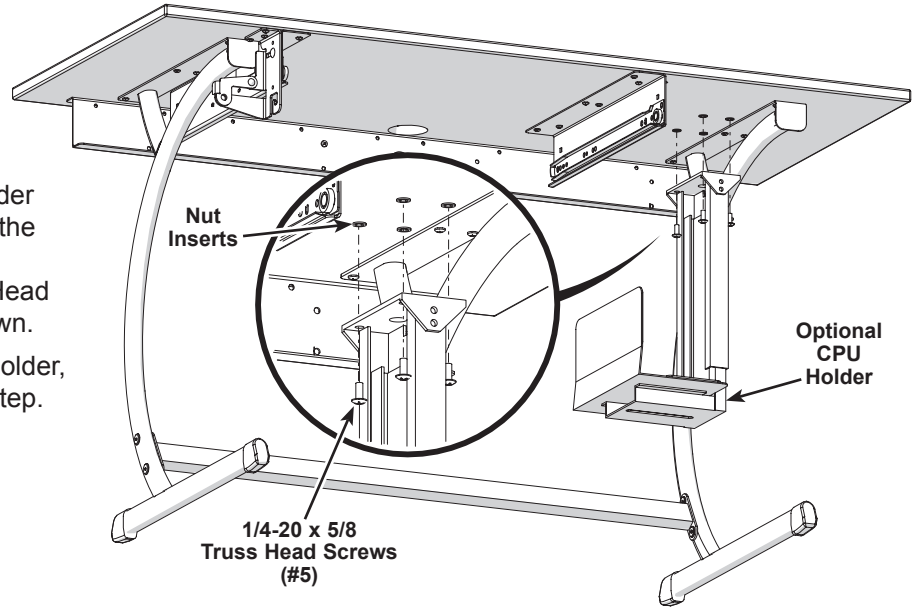
8. Attach the Wiring Clamps (#12) to the Stiffener with one #10-32 x 3/8 Pan Head Screw (#8) and 10-32 Jam Lock Nut (#9).

Assembly (continued)

9. Turn the Assembly over.
If attaching the optional CPU Holder:
 - a. Assemble the CPU Holder according to the manufacturer's instructions.

- b. Attach the CPU Holder to the nut inserts in the Desktop with four 1/4-20 x 5/8 Truss Head Screws (#5) as shown.

If not installing a CPU Holder, skip ahead to the next step.



10. Push the Grommet (#12) into the hole in the Desktop.
11. Tip the Keyboard Tray into the Keyboard Brackets and push it closed.

