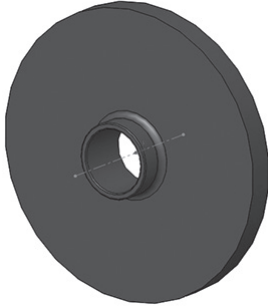


Supplied Fasteners



Two Desk Washers
236C196



5/16-18 x 5" Capscrew
X003769



5/16-18 Ny-Loc Nut
X003360

Disassembly

1. Remove the nut, washers and hex bolt that secure the Desk Top to the Oval Mast. Save the Desk Top, the washers, bolt and nut can be discarded.

If the “A” Model Mast Assembly has not yet been replaced by the new “C” Model Mast Assembly, complete Steps 2-3 before proceeding.

The “A” Model Mast Assembly featured a welded Desk Mount and the “C” Model Mast Assembly features a cast Desk Mount.

2. Tip the Mast Assembly and Base on it's side. Remove the Mast Assembly from the Base by removing the Capscrew and Washers from the bottom of the Base. Save this hardware.
3. Replace the “A” Model Mast Assembly with the new “C” Model Mast Assembly using the hardware from the previous step.

Assembly

Use the Supplied Fasteners to attach the Desk Top to the new Mast Assembly.

1. Place the two new Desk Washers into the Desk Bracket on the underside of the Desk Top. These Washers have a small diameter boss that fit into the round holes in the Desk Bracket to help hold them in place during reassembly.
2. Slide the Desk Top Assembly with the new Desk Washers over the ears of the cast Desk Mount at the top of the Oval Mast.
3. Thread the new 5/16"-18 x 5 Capscrew completely through the Washers and Desk Bracket.
4. Install the new 5/16"-18 Ny-Loc Nut and tighten it to complete the installation.
5. The Desk Top should hold it's position when properly tightened yet should still be able to tilt to any desired angle without readjustment of the Ny-Loc Nut.