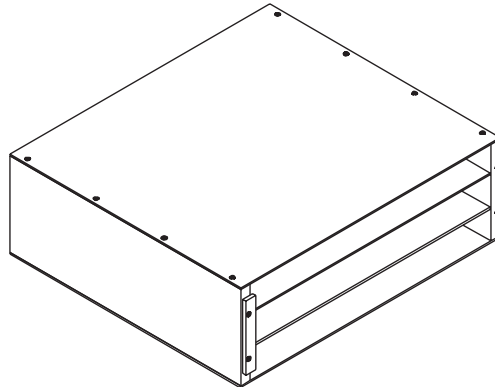




Assembly Instructions Rehearsal Resource Center Folio Box Option

Model 121



Drawer Unit Assembly

CONTENTS

Warranty	3
Important User Information	3
General	3
Manufacturer	3
Intended Use	3
Required Tools	4
Fasteners	4
Parts List	4
Assembly	5

Note: Please read and understand the Rehearsal Resource Center Folio Box Option Assembly Instructions before assembling the parts.

Note: Remove all items from the shipping carton. Refer to the illustrations on the following pages. If you need additional information about your Folio Box Option, write or telephone Wenger Corporation at the number below.

WARRANTY

The Wenger Model 121 Rehearsal Resource Center Folio Box Option is guaranteed free of defects in materials and workmanship for five full years.

Our guarantee assures you of either a full refund or repair or replacement of the defective materials or workmanship without charge, at the discretion of our Customer Service Department. Just call a Customer Service Representative at 1-800-733-0393 and state the reason you are dissatisfied. If a product return is necessary, your representative will issue a return authorization. This is your sole remedy for breach of this warranty.

Should you have a question or problem with any Wenger product, don't hesitate to call, even if the product is past warranty. It's important to us that all our customers be satisfied.

This is the sole warranty made by Wenger. Wenger disclaims all other warranties, including the warranties of merchantability and fitness for a particular purpose, as well as all liability for incidental, consequential, special, and indirect damage. Wenger liability for direct damages shall be limited to the amount you paid for the product involved. Wenger reserves the right to make product changes without obligation to incorporate such changes into products previously sold.

Some states do not allow the exclusion or limitation of damages or warranties, so the above may not apply to you. This warranty gives you specific legal rights. You may also have other rights which vary from state to state.

IMPORTANT USER INFORMATION

GENERAL

Copyright® 2006 by Wenger Corporation

All rights reserved. No part of the contents of this manual may be reproduced, copied, or transmitted in any form or by any means including graphic, electronic, or mechanical methods or photocopying, recording, or information storage and retrieval systems without the written permission of the publisher, unless it is for the purchaser's personal use.

Printed and bound in the United States of America.

The information in this manual is subject to change without notice and does not represent a commitment on the part of Wenger Corporation. Wenger Corporation does not assume any responsibility for any errors that may appear in this manual.

In no event will Wenger Corporation be liable for technical or editorial omissions made herein, nor for direct, indirect, special, incidental, or consequential damages resulting from the use or defect of this manual.

The information in this document is not intended to cover all possible conditions and situations that might occur. The end user must exercise caution and common sense when assembling or installing Wenger Corporation products. If any questions or problems arise, call Wenger Corporation at 1-800-733-0393.

MANUFACTURER

The Wenger Model 121 Rehearsal Resource Center Folio Box Option is manufactured by:

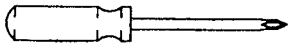
Wenger Corporation
555 Park Drive
Owatonna, MN 55060
1-507-455-4100 • 1-800-733-0393
www.wengercorp.com

INTENDED USE

- This product is intended for indoor use in normal ambient temperature and humidity conditions — it must not be exposed to prolonged outside weather conditions.
 - This product is intended to be assembled only as described in these instructions.
-

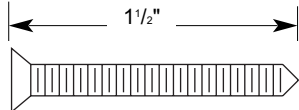
REQUIRED TOOLS

Tools required for assembly is a Phillips Screwdriver. *The use of a power driver is not recommended.*

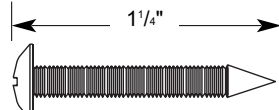


Phillips Screwdriver

FASTENERS



(1) Flat Head Screw, 8 x 1 1/2"



(7) Truss Head Screw,
8-15 x 1 1/4"

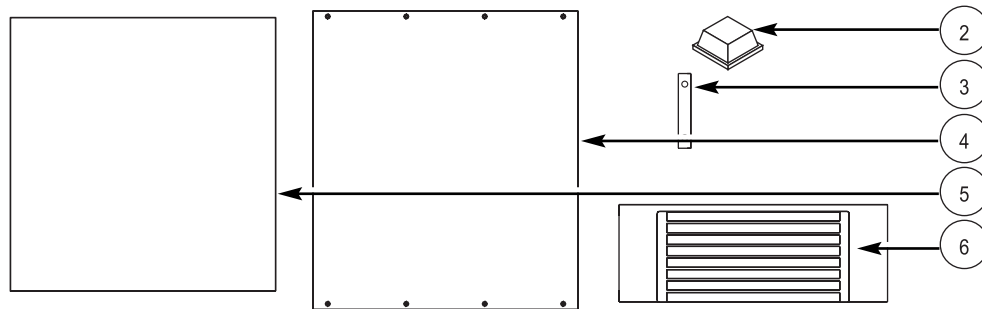
PARTS LIST

Item	Description	Part Number	Item	Description	Part Number
1	Flat Head Screw, 8-18x1-1/2"	172B138	5	Folio Box, Shelf	121B151.1
2	Bumper, Tapered Square, Plastic	X001910	6	Folio Box Shelf Support	121A154
3	Folio Box, Backstop	121B156			121B152.1
4	Folio Box, Flat Panel	121B150.1			RM11151
			7	Truss Head Screw 8-15 x 1-1/4	146K423.1

ASSEMBLY

Before starting the Folio Box Option assembly, do the following.

1. Read and understand this assembly instruction.
2. Remove all items from the shipping cartons. Make sure that all parts are present. Item numbers refer to the Part List above.
3. Inventory the hardware package and make sure that all required hardware is present. Discard any items not used during the assembly.

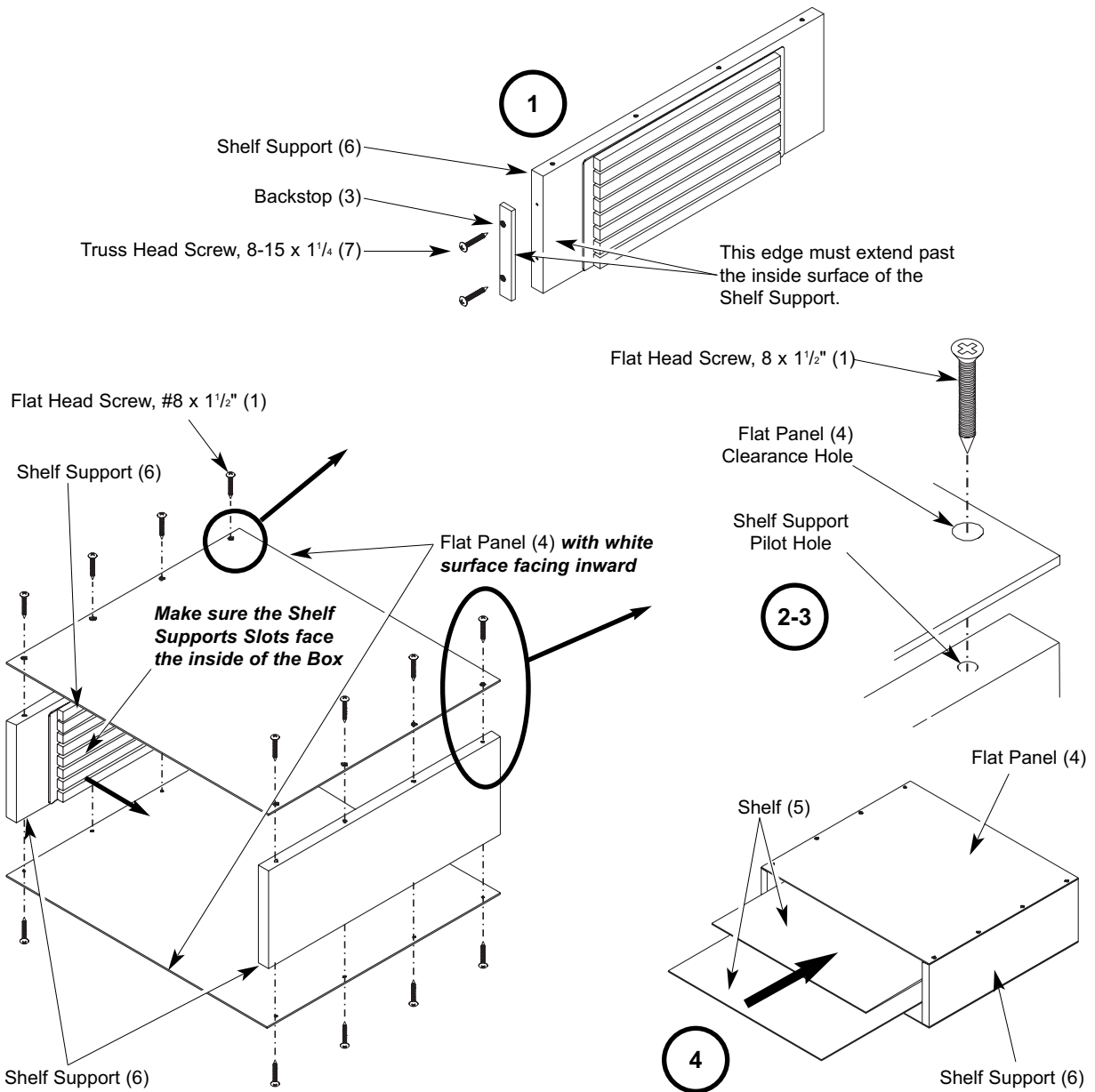


ASSEMBLY (CONTINUED)

To assemble a Folio Box, do as follows.

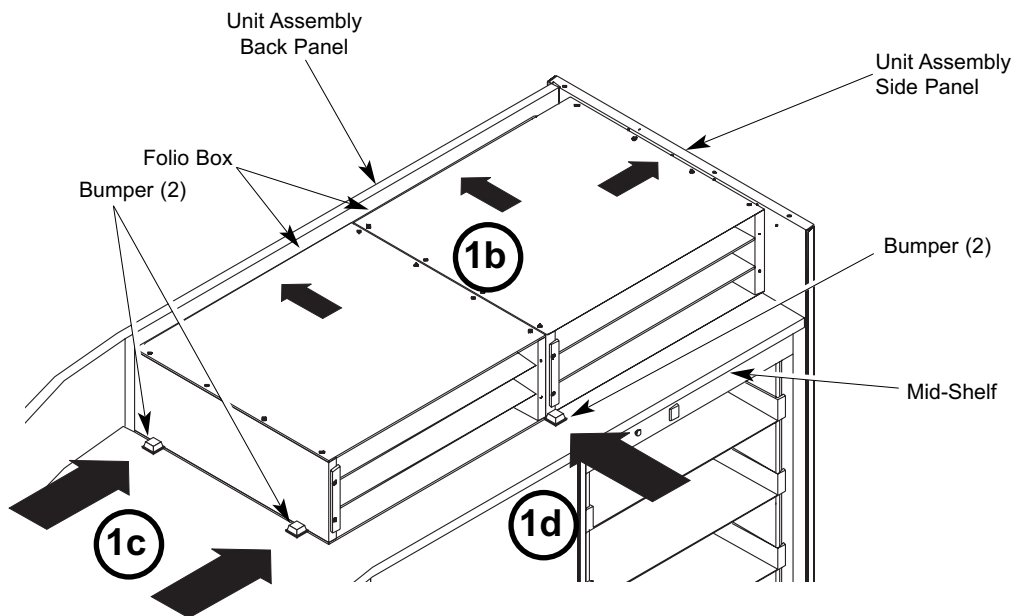
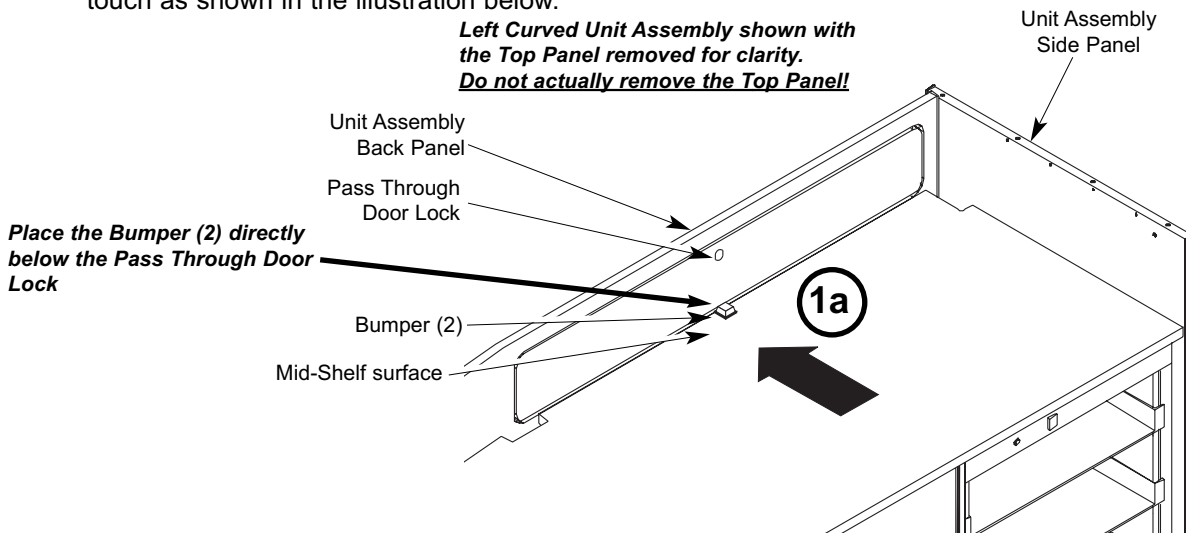
1. Attach the Folio Box Backstop (3) to one Folio Box Shelf Support (6) with two Truss Head Screws (7). Pilot Holes on the end of the Side Panel locate the position of the Backstop.
2. Align the Clearance Holes in two Folio Box Flat Panels (4) with the Pilot Holes in two Folio Box Shelf Support (6). Make sure that the Shelf Support Slots face the inside of the Box.
3. Using a Phillips Screwdriver, fasten the Flat Panels (4) to the Shelf Support (6) by screwing sixteen Flat Head Screws (1) into the Clearance Holes. The white surface of both Flat Panels (4) should face the inside of the Folio Box.
4. Insert two Folio Box Shelves (5) into the slots in the Shelf Supports (6).

Note: Spacing the shelves with three empty slots between each shelf allows 2" between shelves.



ASSEMBLY (CONTINUED)

5. Install the Folio Boxes in a Unit Assembly as follows:
 - a. Remove the protective backing on a Bumper (2) and place the Bumper (2), with the adhesive side against the Mid-shelf surface, directly below the Pass Through Door Lock at the back of the Unit Assembly Mid-shelf as shown below.
 - b. Place the Folio Box Assemblies on the Mid-shelf with a side of the right Folio Box against the Right Side Panel of the Left Curved Unit Assembly (left side for the Right Curved Unit Assembly).
 - c. Remove the protective backing from two Bumpers (2) and place the Bumpers (2), with the adhesive side against the Mid-shelf surface, so that the edge of the Bumpers is against the left side of the left Folio Box (right side for the Right Curved Unit Assembly) as shown in the illustration below.
 - d. Remove the protective backing from a Bumper (2) and place the Bumper (2), with the adhesive side against the Mid-shelf surface, at the front of the Folio Boxes at a point where their sides touch as shown in the illustration below.



Left Curved Unit Assembly shown

