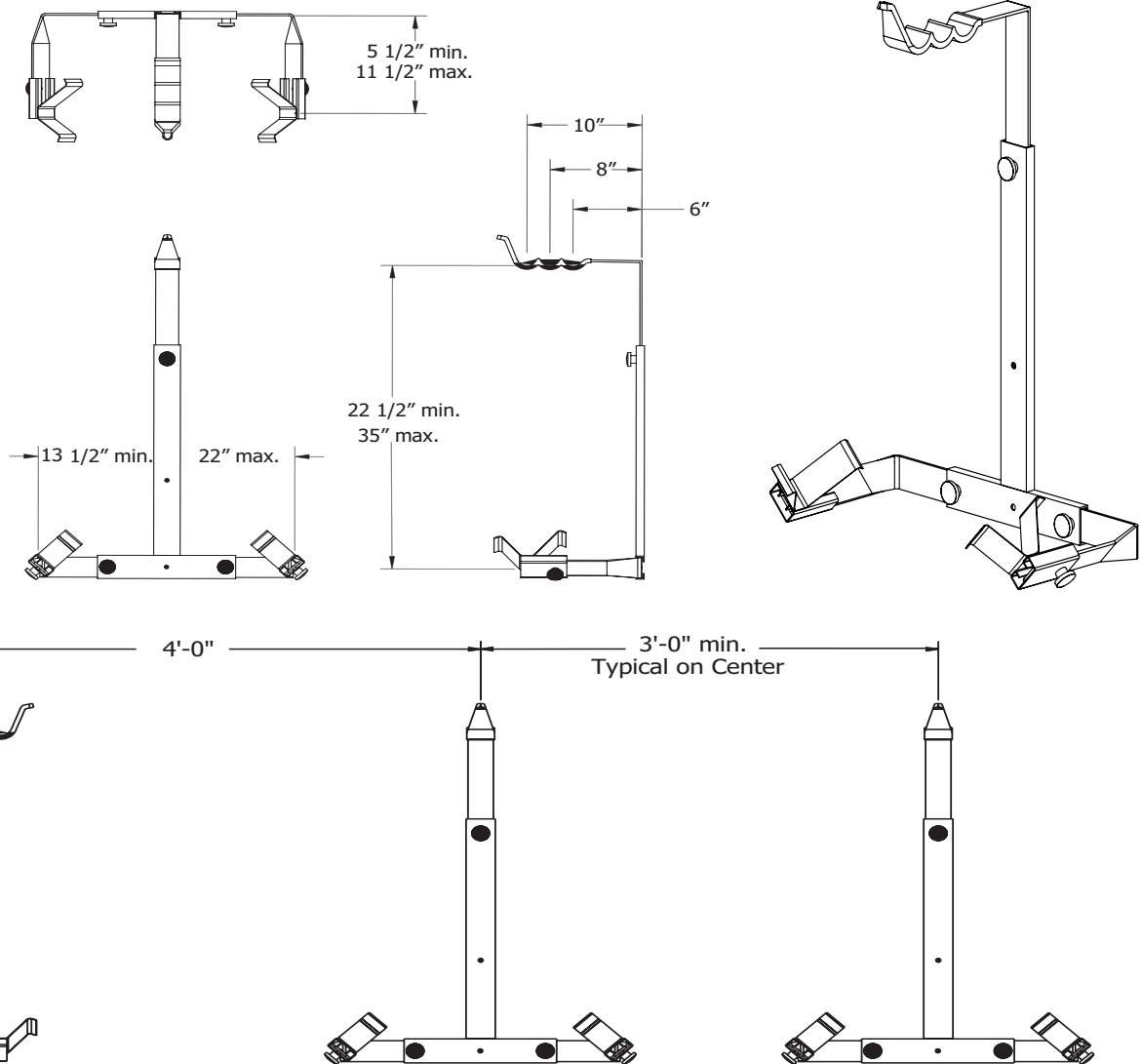


Tuba/Sousaphone Wall Bracket

- 049E100 15 lbs (6.8 kg).
 - Durable design gently cradles and protects instruments.
 - Mounts easily on sheet rock or masonry to save valuable floor space.
 - Adjusts five ways to hold tuba or sousaphone.
 - Height adjusts from 22-1/2" min. to 35" max (572 to 889 mm).
 - Width adjusts from 13-1/2" min. to 22" max (343 to 559 mm).
 - Does not fit Miraphone Tubas, Baritone Horns, or Rotary Valve Tubas.
- Note: The upper bracket fits through the tubing on the upper part of the Tuba.
Rotary Valve Tubas or Tubas constructed without any space for the bracket to fit through, will not fit with this bracket.*
- Recommended to NOT double-stack.
 - Assembly required: mounting hardware not included.
 - Environmental attributes and LEED compliance for this product can be found at www.wengercorp.com/GREEN or by contacting your Wenger representative.
 - Five year warranty.



© 2017 Wenger Corporation
USA/2017-12/W

