

ENRICHING LIVES BY ENABLING AND INSPIRING GREAT PERFORMANCES.



## W E N G E R   M U S I C   E D U C A T I O N   C A T A L O G



wengercorp.com | 800.4WENGER

## SEATING

- 11 | Posture Chair Comparison Chart
- 14 | Student and Musician Chairs
- 16 | Nota® Chairs
- 17 | Posture Chair Accessories
- 18 | Symphony and Cellist Chairs
- 19 | Conductor's/String Bassist/Percussionist Chair
- 20 | Sousaphone Chair and Ensemble Stool
- 21 | Portable Audience Chairs
- 22 | Cavea™ Fixed Audience Seating

## MUSIC STANDS

- 25 | Music Stand Comparison Chart
- 27 | Endur™ Music Stand
- 29 | Bravo™ Music Stand
- 30 | Classic 50® Music Stand
- 31 | RoughNeck™ Music Stand
- 32 | Preface® Music Stand
- 33 | Gig® Stand
- 34 | Universal Tablet Stand and Universal Tablet Mount
- 35 | Music Stand Accessories
- 37 | Cymbal Stand and Tuba Tamer™

## CONDUCTOR'S EQUIPMENT

- 41 | Flex® Conductor's System
- 42 | Flex® TechBridge and Flex® Conductor's Stand
- 43 | Conductor's Chair and Conductor's Podium
- 44 | Director's Stand and Folding Conductor's Podium
- 45 | Preface® Conductor's Stand

## TEACHING TOOLS

- 49 | Media Storage
- 51 | Rehearsal Resource Center
- 52 | Wardrobe Cabinet
- 53 | Select Lab Workstation
- 54 | Essential Lab Workstation
- 55 | Class Piano Workstation
- 56 | Visual Communications - Markerboard and Tackboards

## ELEMENTARY PRODUCTS

- 59 | flipFORMS®
- 60 | footNOTES®
- 61 | teacherTAXI® Cart
- 62 | Poster/Teaching and Small Instrument Cabinets
- 63 | ORFFgarage® and ORFFmobile®
- 64 | AirPro® Lockers

## STORAGE SOLUTIONS

- 67 | UltraStor® Storage Cabinets
- 69 | AcoustiCabinets®
- 70 | Corner Storage Cabinets
- 71 | Instrument Storage Cabinet Specs
- 77 | String Bass Rack and Cello Rack
- 78 | Violin/Viola Rack, Guitar Rack and  
Tuba/Sousaphone Mobile Storage Rack
- 79 | Percussion Workstation
- 80 | GearBoss® Shelving
- 81 | Music Library System
- 82 | Sorting Rack
- 83 | Folio Cabinets

**MOBILE STORAGE**

- 88 | GearBoss® X-Cart™ and Team Cart™
- 89 | GearBoss® SportCart™ and Workstation
- 90 | OnBoard® Cargo Cart
- 91 | Rack 'N Roll
- 92 | OnBoard® Uniform Cart and Mobile Kiosk
- 93 | GearBoss® TranSport Cart
- 94 | OnBoard® Podiums
- 95 | OnBoard® Timpani, Percussion and Bass Drum/Gong Carts
- 96 | OnBoard® Keyboard and Speaker Carts

**ACOUSTIC SOLUTIONS**

- 99 | VAE® Technology
- 100 | VAE® Rehearsal and Studio VAE®
- 101 | SoundLok® Sound-Isolation Rooms
- 102 | Pre-Engineered Acoustical Doors
- 103 | Traditional Acoustic Panel Series
- 104 | Dynamic Acoustic Panel Series
- 105 | Acoustic Shell Comparison Chart
- 106 | Diva® Acoustical Shell
- 107 | Legacy® Select Acoustical Tower and Acoustic Shield
- 108 | Legacy® Classic Acoustical Shell
- 109 | Legacy® Basic Acoustical Shell
- 110 | Travelmaster™ Acoustical Shell

**CHORAL RISERS**

- 113 | Signature® Choral Risers
- 115 | Tourmaster® Choral Risers

**STAGING AND SEATED RISERS**

- 119 | StageTek® Staging System
- 121 | StageTek® Outdoor Staging
- 122 | StageTek® Seated Risers
- 123 | StageTek® ADA Ramp
- 124 | StageTek® Accessories
- 126 | Trouper® Staging

**PERFORMING ARTS**

- 129 | Theatre Rigging Solutions
- 130 | TIM® Service Program
- 131 | Transcend® Active Acoustics
- 132 | Full-Stage Acoustical Shells and Banners
- 133 | StageTek® Tiered Audience Seating and Portable Audience Chairs
- 134 | Cavea™ Fixed Audience Seating
- 135 | STRATA® Orchestra Pit Filler
- 136 | Studio and Backstage Make-Up Stations

**RESOURCES**

- 137 | Planning
- 139 | Sustainability



**HIGH-QUALITY,  
DURABLE MUSIC  
EDUCATION EQUIPMENT:  
THE ONLY BETTER  
INVESTMENT YOU CAN  
MAKE IS IN THE STUDENTS  
THEMSELVES.**

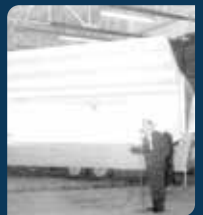




Music makes the world a better place. Music educators know that pursuing excellence requires high-quality equipment that is durable, dependable, and designed for the daily demands of practice and performance. By using the highest-quality materials combined with superior workmanship, Harry Wenger was able to grow a business from an Owatonna, MN basement into the standard of the music education industry today. While we are known for selling music education equipment, what we have really sold since 1946 is value. The only better investment you can make is in the students themselves.



Wenger®





**"WE STARTED WITH THE SOUSAPHONE CHAIR,  
THEN IT WAS OUR CHORAL RISERS, AND THEN...  
WELL THEN IT JUST TOOK OFF FROM THERE."**

**— HARRY WENGER, FOUNDER OF WENGER CORPORATION**

Since 1945, we have worked closely with music educators. Those partnerships have given us a focused understanding of customer needs and helped us to create interactive, high-value products and services to enable and inspire great performances. We are pleased to take this opportunity to showcase all of the reasons Wenger products are the ideal choice for your program. Above all, we value our relationships, and take pride in helping music educators nationwide thrive and succeed. In addition to this catalog and our website, our sales representatives are always here to assist and consult with your program needs. Our goal is to provide you with all of the necessary tools and information to help you make informed purchasing decisions. We thank you for your business and look forward to working with you in the upcoming year.



# A PRODUCT LINE WORTHY OF A STANDING OVATION

ACOUSTICS



AUDIENCE SEATING



CONDUCTOR'S EQUIPMENT



MARCHING BAND



STORAGE



SOUND-ISOLATION SOLUTIONS



TEACHING TOOLS



THEATRE





For more than 75 years, we at Wenger have crafted so many innovative products that it's hard to find a music facility that doesn't have something stamped with the Wenger logo. Our product line and support services before, during and after the sale demonstrate our commitment to functionality, durability, innovative design and customer satisfaction. Take the time to discover everything we offer and see for yourself why Wenger products set the industry standard for quality and ingenuity.

MUSIC CHAIRS



MUSIC STANDS



CHORAL RISERS



SEATED RISERS AND STAGING



ELEMENTARY



STORAGE CARTS



ATHLETIC



PERFORMING ARTS



Wenger®







Wenger®

# SEATING

Wenger is the leader in music posture chair design. No matter the need, the level of performance, or size of the musician, Wenger has a chair that is perfect for everyone. Better posture, improved technique, protection for valuable instruments and undisputed value. These are just a few of the attributes that make Wenger the industry leader with regards to music education seating.





# POSTURE CHAIR COMPARISON



## What Matters to You

ENCOURAGES A HEALTHY SITTING POSTURE

ENCOURAGES A HEALTHY SITTING POSTURE IN A VARIETY OF POSITIONS

MULTIPLE HEIGHTS AVAILABLE TO FIT EVERY MUSICIAN

PADDED AND UPHOLSTERED FOR INCREASED COMFORT

LUMBAR SUPPORT

ANSI/BIFMA 5.1-2002

GREENGUARD CERTIFIED

### STUDENT



“I’ve used Wenger chairs since the mid-1980s. I like the Student Chair because it’s very sturdy, even for the largest football players. It’s rock solid. We have the chairs in different heights to accommodate different students. These chairs are comfortable and very good for students.”

– Robin Rogers

*Choral Director, Charleston County School of the Arts, North Charleston, South Carolina*

**MUSICIAN****NOTA<sup>®</sup>  
STANDARD****NOTA<sup>®</sup>  
PREMIER****SYMPHONY****CELLIST**

Optional



“A chair like the Nota Chair, that allows a musician to sit comfortably and play efficiently and easily, can certainly help musicians maintain their good health.”

– Dr. William J. Dawson

Past President of the Performing Arts Medicine Association



# MUSIC POSTURE CHAIRS



## ACCESSORIES

Chairs with accessories cannot be stacked



Sousaphone  
Holder



Tuba Rest



Book and Music Storage Rack  
Folding Tablet Arm works left or right  
and folds away when not in use.



Ganging  
Clamps



Move & Store Cart

## STUDENT AND MUSICIAN CHAIRS

There can only be one original. Wenger Student and Musician Posture Chairs are the tried-and-true seating solution trusted by educators for over 75 years. These chairs provide just the right amount of support and comfort while promoting a more natural performance posture. The Musician model adds padding for increased comfort during long sessions.

- Posture chair design promotes easier breathing
- Student model has wear-resistant polypropylene seat and back for even weight distribution, improved comfort and long-lasting durability
- Musician model is padded and upholstered for added comfort
- Chair glides provide increased durability and stability
- Six heights available to accommodate most musicians, seat-to-floor frame heights of 15½", 16", 17", 17½", 18½" and 19½"
- GreenGuard Certified

### COLORS

#### FRAME



Black

#### STUDENT CHAIR SEAT/BACK



Black

#### MUSICIAN CHAIR UPHOLSTERY



Black

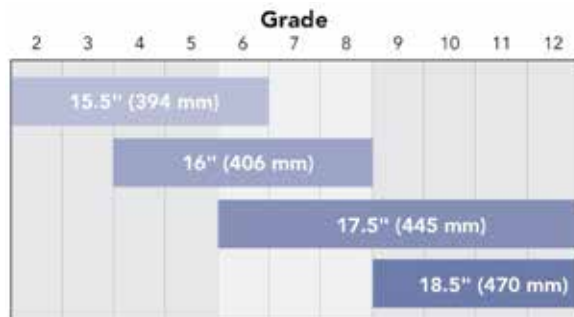


Student Chair



Musician Chair

### STUDENT & MUSICIAN CHAIR HEIGHT RECOMMENDATIONS CHART



NOTE: This chart serves as a general guide based on average student heights. For the best fit, the chair height should closely match the distance from the back of the user's knee to the floor while seated with their feet flat. This ensures proper posture and support.

MODEL NUMBER	PRODUCT	FRAME COLOR
0930000	Student Chair	(Polypropylene) Black
0920000	Musician Chair	(Padded And Upholstered) Black



# MUSIC POSTURE CHAIRS

Uniquely designed for optimal performance and comfort



## ACCESSORIES

Chairs with accessories cannot be stacked



Sousaphone Holder



Tuba Rest



Book and Music Storage Rack  
NOTA folding Tablet Arm works left or right and folds away when not in use.

TABLET COLORS | Edging is black



Graphite



Cherry



Fusion Maple



Solar Oak



Ganging Clamps



Move & Store Cart



## NOTA® CHAIRS

Nota chairs are the result of 75 years of expertise, know-how and a deep understanding of musicians' needs. Nota's patented position/transition seat, rounded waterfall front and narrow convex back are designed for superior fit and deliver comfortable and smart ergonomics in equal measure to improve posture, breathing, focus and performance.

- Durable, powder-coat paint finish
- Durable, specially designed stacking bumpers and floor glides
- Chairs stack easily or fit on our Move & Store Cart
- Rounded design protects valuable instruments
- A wide array of seat-to-floor frame heights 14½", 16", 17½", 19" and 20½"
- GREENGUARD Certified



### COLORS

#### FRAME



Black

#### STANDARD SEAT



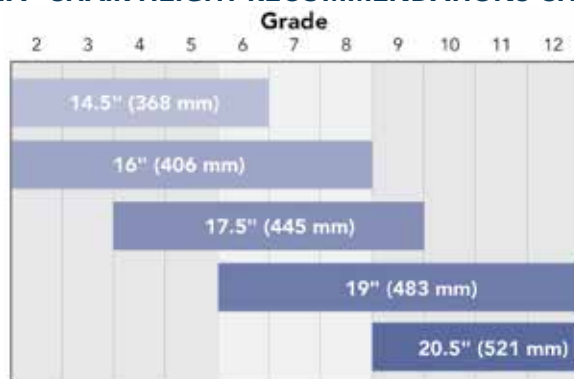
Black

#### PREMIER UPHOLSTERY



Black

### NOTA® CHAIR HEIGHT RECOMMENDATIONS CHART



NOTE: This chart serves as a general guide based on average student heights. For the best fit, the chair height should closely match the distance from the back of the user's knee to the floor while seated with their feet flat. This ensures proper posture and support.

MODEL NUMBER	PRODUCT	FRAME COLOR
0330000	NOTA Chair - Standard (polypropylene)	Black
0320000	NOTA Chair - Premier (padded and upholstered)	Black
127A261	Move and Store Cart	
054D500	Dust Cover	
190A184	Nota Chair Sousaphone Holder	
190A187	Nota Chair Tuba Rest	
0331010	Nota Chair Universal Folding Tablet Arm	
190A066	Nota Chair Book and Music Storage Rack	
190A059	Nota Chair Ganging Clamps	

# MUSIC POSTURE CHAIR ACCESSORIES

## MOVE & STORE CARTS

Rolls easily down hallways, around corners and through standard doorways to move chairs between rehearsal and performance areas.

- Easy to load and move
- Holds eighteen Nota Standard, twelve Nota Premier, eighteen Student, ten Musician or ten Cellist Chairs
- Durable steel construction with easy-roll casters
- Compact, easy to store



Dust Cover

MODEL NUMBER	PRODUCT
127A261	Move & Store Cart
054D500	Dust Cover

## TABLET ARM, STORAGE RACK & INSTRUMENT HOLDERS

Wenger posture chairs are innovative, versatile and have a number of optional accessories. From sousaphone and tuba holder attachments to folding tablet arms and sleek book racks, these accessories enhance any Wenger posture chair.



**SOUSAPHONE  
HOLDER**

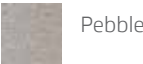


**TUBA REST**



**BOOK AND MUSIC STORAGE RACK**  
**TABLET ARM** for Musician & Student Posture  
 Chairs available in left or right and folds away  
 when not in use.

TABLET COLORS | Edging is black



**GANGING  
CLAMPS**

Chairs with accessories cannot be stacked

MODEL NUMBER	PRODUCT
054B159	Sousaphone Holder, for Student Chair and Musician Chair
106E001	Student Chair and Sousaphone Holder
054A160	Tuba Rest, for Student Chair and Musician Chair
0939020	Right-Hand Folding Tablet Arm Only, for Student Chair and Musician Chair
0939021	Left-Hand Folding Tablet Arm, for Student Chair and Musician Chair
054L286	Under-Chair Book Rack, for Student Chair and Musician Chair
190A059	Universal Ganging Clamps



# SPECIALTY CHAIRS

## SYMPHONY CHAIR

The Symphony Chair is the ultimate expression of Wenger's musician-first design philosophy. Every curve and angle has been thoughtfully engineered to optimize posture and improve comfort and breathing during the performance. With full lumbar support and a contoured seat that eliminates pressure points, the Symphony Chair performs as though it is an extension of the musician's body.

- Posture chair design promotes easier breathing
- Durable 14-gauge oval tube frame with powder coat paint finish
- Adjustable seat angle
- Premium, durable upholstery and formal, all-black styling
- Two seat-to-floor frame height options of 18½" and 19½"



MODEL NUMBER	PRODUCT	FRAME COLOR
0970000	Symphony Chair	Black
0979131	Adjustable Lumbar Pad	
112A093	Ganging Clamps	
112A094	Move & Store Cart (6 Symphony Chairs)	
054D500	Dust Cover	

## CELLIST CHAIR

A unique playing position demands a chair that is just as unique. The Cellist Chair has been specially designed to comfortably promote the difficult lean-forward position required by cellists. By properly stabilizing and supporting the musician, they are free to focus on the demands of the performance and their technique, not the chair.

- Provides the ideal lean and balance requirements for a cellist
- 16-gauge steel frame with powder coat paint finish
- Fully cushioned seat and back with non-slip upholstered surface for long-lasting comfort
- Stackable or compatible with Wenger Move & Store Cart
- Two seat-to-floor frame height options of 18½" and 19½"



### COLORS

#### FRAME



Black

#### UPHOLSTERY



Black

MODEL NUMBER	PRODUCT	FRAME COLOR
0940000	Cellist Chair	Black

## CONDUCTOR/STRING BASSIST/PERCUSSIONIST CHAIR

Nobody understands the unique posture requirements of musicians like Wenger. The Conductor/String Bassist/Percussionist Chair is proof of this industry-leading expertise. The chair’s upright, half-seated position puts the conductor in the ideal position to direct. The chair’s upright posture and swivel lock makes it a great solution for string bassists and percussionists, as well. Fully adjustable design enables musicians the flexibility to find their own ideal position.

- Cushioned seat supports half-seated, half-standing posture
- Seat swivel locks for bassist use and swivels 170-degrees for the extended range of percussionists
- Combined pneumatic seat height and footrest adjustment
- Low back and small, rounded seat
- Strong, durable black steel framing
- Seat-to-floor frame heights of 26½" to 36½"
- GREENGUARD Certified

### COLORS

#### FRAME



Black

#### CHAIR UPHOLSTERY



Black



MODEL NUMBER	PRODUCT
157F091	Conductor’s/String Bassist/Percussionist Chair



## SOUSAPHONE CHAIR

Harry Wenger, a band leader and educator, always looking for ways to help his students and fellow musicians, designed a chair that supports the instrument's bulk. It allows musicians to concentrate on their technique. The Sousaphone Chair has not changed much since Harry Wenger's original design, neither has Wenger's desire to develop the innovations that enhance your musician's abilities.

- Three adjustable support arms enable optimum positioning of the Sousaphone
- 16 gauge base frame
- 15½" square vinyl clad seat
- Seat height is 16¼" at back and 16" in front



### MODEL NUMBER

046D001

### PRODUCT

Sousaphone Chair

## ENSEMBLE STOOL

The ensemble stool features telescoping legs and a wood seat. It's handy, convenient, and always in demand all over your facility.

- Telescoping legs enable seat height adjustments between 25½" and 33¼"
- 18-gauge steel legs
- 18-gauge steel footring in black
- Powder-coat paint finish
- 14" diameter wood seat



### MODEL NUMBER

104A001

### PRODUCT

Ensemble Stool



# SPECIALTY CHAIRS

## PORTABLE AUDIENCE CHAIRS

Here is a smart, affordable and flexible addition or alternative to fixed audience seating that can adapt to changing theater seating configurations. These chairs combine all the features and comfort you would expect from a luxury theater chair at a price that's just as comfortable. Available in standard and premier styles.

- Stable freestanding design that can be floor-mounted if desired
- Extra comfortable with thick padding
- Fine upholstery with classic styling
- Reliable automatic spring-return seat mechanism
- Premier Audience Chair features finished hardwood on back, bottom and arm rests for an elegant appearance
- Available in a wide selection of fabrics and wood stains, custom design options are available
- Chair measures 21 - 25"w (outside to outside) x 32"h in 1" increments



### ACCESSORIES

Move & Store Cart  
Holds Twenty-Four  
Single Chairs



Move & Store Cart  
Dust Cover



Cup Holder



Donor Plates  
Seat Number Plates

## HIGH-DENSITY PORTABLE AUDIENCE CHAIRS

Comfortable. Flexible. Durable. These strong folding portable chairs are sure to leave a positive impression with your audience without leaving marks on the theater or auditorium floors. X-frame construction prolongs the life of the chair and provides even weight distribution for enhanced comfort.

- Double tube and channel frame provides strength, durability and flexibility
- Multiple seat and back cushion options to chose from
- Lobe screws make seat backs virtually tamper-proof
- X-frame construction prolongs chair life and enhances comfort
- Duraflex action assures level seating on uneven surfaces
- Chair measures 18" or 19½"w x 20¾"d x 31¾"h | Seat measures 18¾"w x 21¾"d x 17¾"h



### ACCESSORIES



Single-Role Vertical  
Storage Cart



Double Tier Hanging Storage Cart



Removable  
Standard Armrest



Folding Armrest



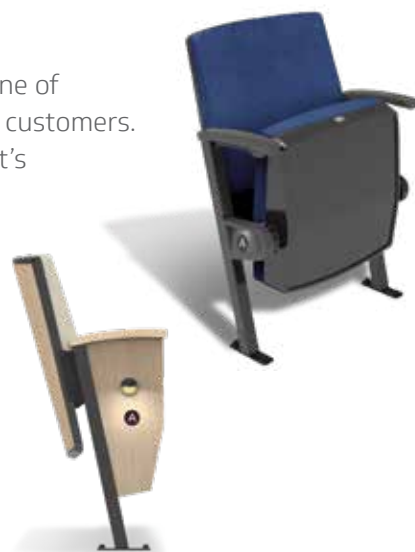
Removable  
Cup Holder



## CAVEA™ FIXED AUDIENCE SEATING

Wenger Corporation has partnered with SERIES® Seating to engineer a new line of audience seating specifically designed to fit the needs of our K-12 education customers. We've combined industry-leading durability and comfort to create a seat that's exceptional in every way.

- Seat and back contours to help position the occupants' body for proper posture and comfort
- Specific cushion density and patented webbed support system provide ideal comfort for the duration of a performance or class
- Easy to replace seat coverings
- Integrated lumbar support
- Variety of finishes to meet the aesthetic needs of your space
- Curvature of the armrest provides proper support and placement of occupant's arms and wrists
- Seat site mechanism is a  $\frac{3}{4}$  fold, noise dampening gravity rise system. It reduces noise and allows the seat bottom to be pushed back to allow more aisle space for people to pass
- Seat design with fully enclosed components eliminates any pinch points
- "Drop-in" assembly reduces installation time and eliminates excess brackets and fasteners
- Compact seating envelope (16.5") maximizes seating capacity without compromising comfort









Wenger®

# STANDS

For over 75 years, more music educators and musicians have trusted their music stand needs to Wenger. Elegant in design, sophisticated in appearance and uncompromising in construction, Wenger stands deliver the ideal combination of size, balance and functionality. From the rehearsal space to the auditorium, Wenger's commitment to quality, value and professionalism remains as unwavering as the stands themselves.







# MUSIC STAND COMPARISON

## What Matters to You

### USAGE

### DESK DIMENSIONS

### HEIGHT ADJUSTABILITY

### SLIDER

### WEIGHT

### DESK MATERIAL

### FEATURES

### BASE AND POST



All Wenger desks connect to the post with a universal connection that will hold tight for years.

### COLORS

### TRANSPORT AND STORAGE



### ENDUR™

### BRAVO

The best combination of durability and strength

Heavy-duty stand for concerts and rehearsals where appearance is paramount

20" w x 12½" h desk

20¾" w x 16¾" h desk height overall with shelf

23" to 43¾", desk lip to floor

22½" to 46½", desk lip to floor

Brass spring slider mechanism

Brass spring slider mechanism

8.4 lb

7 lb

22-gauge steel desk with rolled edges for instrument protection and reinforcement

Polycarbonate desk is lightweight yet impact resistant. Desk won't chip or scratch

- Rolled edges
- Bolt-through desk attachment

- Accessory shelf holds pencils, reeds, etc.
- Bolt-through desk attachment

18-gauge upright post for added strength and stability

- 12-gauge steel welded base for extreme durability
- Wobble-free base attachment
- 18-gauge inner post prevents denting and keeps slider mechanism functioning freely
- 1¼", 18-gauge outer tube for heavy-duty stability
- Durable powder-coat paint finish

Black

Black

Music Stand  
Move & Store Carts

Music Stand  
Move & Store Carts

**CLASSIC 50®**

Lightweight yet durable all-purpose stand that provides quiet, rattle-free operation

20"w x 13½"h desk

25" to 49", desk lip to floor

Brass spring slider mechanism

4.9 lb

Black polycarbonate desk keeps its classic appearance

- Recess in desk for pencils, reeds, etc.
- Bolt-through desk attachment

- Strong, one-piece polycarbonate base for excellent stability
- Wobble-free base attachment
- 18-gauge inner post prevents denting and keeps slider mechanism functioning freely
- 1", 18-gauge outer tube for easy transport
- Durable powder-coat paint finish

Black

Music Stand  
Move & Store Carts

**ROUGHNECK**

All-steel stand built to withstand years of abuse

20"w x 12½"h desk

27" to 43", desk lip to floor

One-hand trigger lock

8.3 lb

22-gauge steel desk with rolled edges protects instruments and resists bending

- Bolt-through desk attachment
- Trigger lock height adjustment - holds 30 pounds

- 12-gauge steel welded base for extreme durability
- Wobble-free base attachment
- 18-gauge inner post prevents denting and keeps slider mechanism functioning freely
- 1", 18-gauge outer tube for heavy-duty stability
- Durable powder-coat paint finish

Black

Music Stand  
Move & Store Carts

**PREFACE®**

Lightweight economy stand

20"w x 13½"h desk

25" to 49", desk lip to floor

Brass spring slider mechanism

5.7 lb

Lightweight aluminum desk with large, one-piece attachment bracket

- Cut out on desk tray allows stands to nest tightly
- Bolt-through desk attachment

- 14-gauge steel welded base for durability
- Wobble-free base attachment
- 18-gauge inner post prevents denting and keeps slider mechanism functioning freely
- 1", 18-gauge outer tube for easy transport
- Durable powder-coat paint finish

Black

Music Stand  
Move & Store Carts

**GIG®**

Music on the go

20"w x 14"h desk

10" to 42", desk lip to floor  
- our lowest height option available

Unique cantilever arm adjusts desk height

9 lb

Aluminum desk

- Built-in carrying handle makes for easy traveling
- Unique cantilever arm adjusts desk height

- Base is 16-gauge steel tube
- Durable powder-coat paint finish resists scratching and chipping
- Folds down to 20"w x 4⅝"d x 24½"h

Black

Folds to 20"w x 4⅝"d x 24½"h.  
Built-in carrying handle  
for easy traveling



# MUSIC STANDS

Designed for optimal performance and durability



Customers have asked for it, now it's available...

**NEW** ENDUR  
MUSIC STAND

## ACCESSORIES



Move & Store Cart



Music Stand Lights



Universal Tablet Mount



Leg Caps



NEW

**ENDUR™ MUSIC STAND**

We've built an even tougher music stand! The new Endur™ Music Stand combines a 22-gauge steel (desk) and an 18-gauge steel (post) resulting in a practically indestructible music stand. Endur's sturdy all-metal post and hinge design is engineered to confidently hold more weight than a typical stand without sinking or tipping.

- 22-gauge steel desk with rolled edges for added durability. All metal post, hinge, and feet
- 18-gauge upright post for added strength and stability
- Bolt-through desk attachment
- Durable black powder-coat paint finish
- 20" x 12½" desk
- Height is adjustable from 23" to 43¾" (desk lip to floor)
- 10- year warranty

**COLORS****FRAME**

Black

**STAND DESK**

Black

Balanced design and solid construction helps prevent tip-overs, even during outdoor performances.



Rolled edges means no worrying about scratching or denting expensive instruments.

Brass spring slider mechanism

Metal post, hinge, and base.



Bolt-through desk attachment

Wobble-free base attachment

**MODEL NUMBER**

038A500

**PRODUCT**

Endur Stand

**FRAME COLOR**

Black Frame



# MUSIC STANDS

## BRAVO MUSIC STAND

The Bravo Music Stand stands tall and sturdy among its peers. Distinguished by its classic appearance, uncompromising polycarbonate construction and ideal size, it's the perfect complement to your rehearsal or performance space. Professional in appearance and built to last, the Bravo Music Stand is proof that form and function can play well together.

- Desk is made of lightweight, impact and scratch-resistant polycarbonate
- Desk measures 20<sup>3</sup>/<sub>8</sub>"w x 16<sup>3</sup>/<sub>4</sub>"h including shelf
- Stand extends 22<sup>1</sup>/<sub>2</sub>" - 46<sup>1</sup>/<sub>2</sub>" desk lip to floor
- 1<sup>1</sup>/<sub>4</sub>" outer post adds stability
- 18-gauge inner post for strength and stability
- Accessory shelf holds pencils, reeds, etc.
- Durable powder-coat paint finish
- 12-gauge welded steel base provides superior stability
- Easy friction height adjustment holds 11 lb
- GreenGuard Certified



### COLORS

#### FRAME



Black

#### STAND DESK



Black

### ACCESSORIES



Move & Store Cart



Music Stand Lights



Universal Tablet Mount



Leg Caps

MODEL NUMBER	PRODUCT	FRAME COLOR
1020000	Bravo Stand	Black Frame

## CLASSIC 50® MUSIC STAND

The Classic 50 Music Stand hits the sweet spot between traditional aesthetics and modern performance. It combines a refined, classic appearance, hassle-free operation and durable polycarbonate construction into a lightweight package that is built to last. This stand offers musicians and educators the traditional elegance without the traditional headaches.

- Made of lightweight, impact and scratch-resistant polycarbonate
- Desk measures 20"w x 13½"h
- Stand extends 25" - 49" desk lip to floor  
Shorter model available: 21" - 45"
- Desk recessed to hold pencils, reeds, etc.
- Stand weighs just under 5 lb
- Easy friction height adjustment holds 9 lb
- 1" post makes it easy to carry two stands in one hand
- GreenGuard Certified



### ACCESSORIES



Move & Store Cart



Music Stand Lights



Universal Tablet Mount

MODEL NUMBER	PRODUCT	FRAME COLOR
039E500	Classic 50 Stand	Black Frame
039E499	Classic 50 Short Stand	Black Frame



# MUSIC STANDS

## ROUGHNECK MUSIC STAND

As the name suggests, the RoughNeck Music Stand is a durable, all-steel stand, built to endure the daily abuse of rehearsals and transport yet still look good on the day of the performance. Made of 22-gauge steel, the RoughNeck holds up to 30 pounds, is well balanced and built to last. Tried-and-true, all-steel durability has never looked this good.

- 12-gauge steel welded base for extreme stability and longevity
- Desk measures 20"w x 12½"h
- Stand extends 27" – 43" desk lip to floor (shorter model available)
- One-hand trigger lock mechanism holds 30 lb
- Desk is made of 22-gauge steel with rolled edges for strength and protection
- Durable powder-coat paint finish
- GreenGuard Certified



Features trigger lock for greater weight capacity.



MODEL NUMBER	PRODUCT	FRAME COLOR
038A001	RoughNeck Stand	Black Frame

## ACCESSORIES



Move & Store Cart



Music Stand Lights



Universal Tablet Mount



Leg Caps

## PREFACE® MUSIC STAND

Who says you can't have both exceptional quality and value? The Preface Music Stand features a 12-gauge steel welded base for durability, a cutout desk tray for quick and easy storage, a formal all-black design and professional appearance. It is the reliable, lightweight music stand that meets your needs, your expectations, and your budget.

- 12-gauge steel welded base for durability
- Aluminum desk measures 20"w x 13½"h
- Stand extends 25" – 49" desk lip to floor
- Bolt-through desk attachment
- Easy friction height adjustment holds 9 lb
- Thin 1" post makes carrying two stands in one hand easy
- Wobble-free base attachment
- GreenGuard Certified



MODEL NUMBER	PRODUCT	FRAME COLOR
237B500	Preface Stand	Black Frame

### ACCESSORIES



Move & Store Cart



Music Stand Lights



Universal Tablet Mount



Leg Caps



# MUSIC STANDS

## GIG® STAND

Maximum portability meets maximum stability. The Gig Stand offers musicians on the go a durable, high-quality stand built for travel. The Gig Stand also features a lift arm that moves the desk up and down to accommodate the special needs of timpanists, bell choirs and jazz musicians. Just fold and go.

- Unique cantilever arm adjusts desk height from 10" to 42", desk lip to floor - our lowest height option available
- Base is 16-gauge steel tube
- Built-in carrying handle makes for easy traveling
- Durable powder-coat paint finish resists scratching and chipping
- Folds down to 20"w x 4<sup>5</sup>/<sub>8</sub>"d x 24<sup>1</sup>/<sub>2</sub>"h
- Aluminum desk measures 20"w x 14"h

### ACCESSORIES



Music Stand Lights



Universal Tablet Mount



Gig Stand folds down when you take your music on the road.



MODEL NUMBER	PRODUCT	FRAME COLOR
143E001	Gig Stand	Black Frame



## UNIVERSAL TABLET STAND

Here is something Vivaldi could never have seen coming: the Universal Tablet Stand. Built on the same trusted sturdy base as our standard-setting Bravo Stand, the Universal Tablet Stand brings traditional functionality to the modern age. Spring-loaded clamps gently secure your tablet to the stand, with or without a case.

- Holds most tablets from 5" - 13" in size and up to 1¼" thick - one dimension of tablet must be less than 8¼"
- Spring loaded, rubber coated clamps gently secure tablet to stand
- Friction height adjustment mechanism adjusts height from 29" - 50¼", as measured from floor to center of support
- 360-degree rotation with locking positions in portrait and landscape orientations



Spring-loaded finger clamps for a secure hold.



### ACCESSORIES



Hands-Free Page Turner



Leg Caps

MODEL NUMBER	PRODUCT	FRAME COLOR
040A149	Universal Tablet Stand	Black Frame
040A142	Hands-Free Page Turner	

## UNIVERSAL TABLET MOUNT

The perfect holder for most models of tablets. Clipping your tablet in place is easy and secure. No more resting your tablet on a stand, amp, floor, etc.



MODEL NUMBER	PRODUCT
040A154	Universal Tablet Mount, Single



# MUSIC STAND ACCESSORIES

## MOVE & STORE CARTS

Wenger Move & Store Carts make it easy for you to transport stands from the rehearsal space to the auditorium and back again with ease and efficiency. Having your stands neatly arrayed on a cart simplifies stand setup and protects your stands during transport.

- Large wheels deliver a smooth ride up ramps, around corners and over thresholds
- Dual-wheel design and easy-grip handles increase control around corners and going up and down stairs
- Large Cart holds eighteen Bravo™, twenty RoughNeck™, twenty Classic 50® or up to twenty-four Preface® Stands
- Small Cart holds nine Bravo, ten RoughNeck, ten Classic 50, or up to twelve Preface Music Stands
- Accommodates stands from most other manufacturers
- Easy for one person to handle
- Loads and unloads quickly from both sides
- Lockable to secure your stands when in storage
- GREENGUARD Certified



MODEL NUMBER	PRODUCT
039C202	Large Music Stand Move & Store Cart
039D201	Small Music Stand Move & Store Cart

## MUSIC STAND LEG CAPS

Protect your floors with our durable plastic leg caps, designed specifically for Wenger music stands. These caps provide a secure fit over the stand's legs, preventing scratches and scuffs on hard surfaces. Made from high-quality, non-slip plastic, they ensure stability and prolong the life of your floors and stands. Easy to install and built to last—ideal for schools, studios, and performance spaces. Not compatible with Classic 50 Music Stand.



## HANDS-FREE PAGE TURNER

This convenient solution features hands-free app control, an internal rechargeable battery for portability, and compatibility with most digital devices.



MODEL NUMBER	PRODUCT
037T045	Vinyl Music Stand Leg Cap Set
040A142	Hands-Free Page Turner

## MUSIC STAND LIGHTS

In low light performance settings, you need just the right amount of illumination on your sheet music. Wenger clip and stand lights are offered in a variety of sizes and styles to suit the particular needs of your performance and provide a clear view of your sheet music.



### ORCHESTRA LIGHT

- 8" light head with flexible gooseneck and spring clip
- Nine LEDs with two brightness levels
- Optical-grade lens for even light
- Powered by an AC adapter or three AAA batteries (included)
- Base can be used freestanding



### ENCORE STAND LIGHT

- 6" light head with flexible gooseneck and padded clip
- Six LEDs and two brightness levels
- Optical-grade lens for even light
- Powered by an AC adapter or three AAA batteries (included)
- Durable travel bag (included)



### HAMMERHEAD LIGHT

- 3" light head with flexible gooseneck and clip
- Six LEDs and two brightness levels
- Optical-grade lens for even light
- Uses three AAA batteries (included)
- Durable travel bag (included)



### ELECTRIC STAND LIGHT

- Fits all Wenger stands and most other manufacturers' stands
- Heavy-duty with black finish
- Includes 40-watt bulb and 6' electrical cord

MODEL NUMBER	PRODUCT
237A033	Orchestra Music Stand Light
237A035	Encore Music Stand Light
237A040	Hammerhead Music Stand Light
1090001	Music Stand Light



# SPECIALTY STANDS

## CYMBAL STAND

The Cymbal Stand holds cymbals at the ideal height for easy access and keeps them quiet until the big moment arrives.

- Accommodates cymbals up to 22"
- Chrome base with vinyl coating cushions contact points and eliminates vibration to keep resting cymbals quiet
- Easily adjusts to the perfect height for rehearsal or performance



### MODEL NUMBER

1109101

### PRODUCT

Cymbal Stand

## TUBA TAMER™

The Tuba Tamer allows musicians to control and properly position their instrument so they are free to focus on their playing. Not only does it help the musician support their instrument, it doubles as an ideal in-room storage solution.

- Adjustable, vinyl-clad instrument support stand protects the tuba
- Height-adjustable
- Ideal for rehearsal and performance
- Great for storage and helps prevent damage due to frequent handling

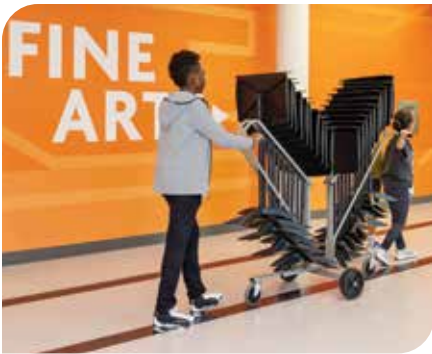


### MODEL NUMBER

049E001

### PRODUCT

Tuba Tamer









Wenger®

# CONDUCTOR'S EQUIPMENT

No two conductors are alike. That's why Wenger offers the widest selection of stands, podiums and fully customizable systems to fit the unique needs and personal style of today's music directors. From the rehearsal space to the auditorium, Wenger conductor's equipment combines industry-leading ergonomic design, superior flexibility and professional aesthetics so conductors can create the most comfortable, efficient and organized workspaces.







# CONDUCTOR'S EQUIPMENT

## FLEX® CONDUCTOR'S SYSTEM

The Wenger Flex Conductor System gives you the ability to design, build and customize a workspace that perfectly fits your needs and your rehearsal or performance space. Each piece within the system has been ergonomically designed to allow you to tailor your equipment to your size. Simply choose the pieces you need and start customizing your workspace.



### ACCESSORIES



Worksurface Mount



Keyboard Mount



Harmony Keyboard Mount



Cupholder



Power Strip Shelf



Bridge Clips



Universal Tablet Mount

## FLEX® TECHBRIDGE

- Cast iron legs for stability and wheels on one side for easy transport and repositioning
- Height adjustable from 29" - 41" floor to bridge top with no accessories
- Lengths available from 2' - 8'
- GreenGuard Certified



MODEL NUMBER	PRODUCT
236A003	TechBridge
236A004	Worksurface Mount
236A005	Keyboard Mount, set of 2
236A007	Cupholder
236A096	Bridge Clips
236A010	Power Strip Shelf
236A013	Universal Tablet Mount

## FLEX® CONDUCTOR'S STAND

- Desk rotates and locks into position so the lip may be toward or away from the user
- Desk tilts from flat to vertical
- Cast iron base with wheels for easy transport
- Desk measures 27"w x 20"h
- Desk height is adjustable from 36" - 52½"
- GREENGUARD Certified

### ACCESSORIES



Under Desk  
Baskets



MODEL NUMBER	PRODUCT
236D002	Polycarbonate Desk
236D011	High-Pressure Laminate (HPL) Desk
236C006	Optional Baskets, pair



# CONDUCTOR'S EQUIPMENT

## CONDUCTOR'S CHAIR

- Swivels 170-degrees or locks in position
- Combined pneumatic seat height and footrest adjustment
- Strong, durable black steel frame with black fabric and stable 5-leg design
- 26½" to 36½" seat-to-floor frame heights
- GreenGuard Certified

### COLORS

#### CHAIR UPHOLSTERY



Black



#### MODEL NUMBER

157F091

#### PRODUCT

Conductor's Chair

## CONDUCTOR'S PODIUM

- Upper podium locks securely onto base podium and includes a detachable safety rail
- Durable grey carpeted surface with black steel framework for extra support
- Built-in wheels for easy mobility
- Base podium measures 43"w x 38"d x 6"h
- Upper podium measures 32"w x 38"d x 6"h
- GreenGuard Certified



#### MODEL NUMBER

158E002

158E001

1110302

#### PRODUCT

Base Podium

Upper Podium with rail

Double Podium with rail

“I’ve used my Wenger conductor’s system for 30 years – it still works great and I love it! There’s not a thing wrong with it; it’ll go another 30 years, no problem.”

– Dr. Buddy Clements  
Band Director, Walnut High School, Walnut, California





# DIRECTOR'S/CONDUCTOR'S STANDS AND PODIUM

## DIRECTOR'S STAND

Classic. Durable. Stable. These are the hallmark features of our Director's Stand. Built with a strong, wobble-free base and transparent desk, the director's stand is fully adjustable, lightweight and professional in appearance. In other words, exactly what you've been looking for.

- Transparent polycarbonate desk
- Durable tripod base with black powder-coat finish
- Desk measures 27"w x 20"h with 1½" lip
- Polycarbonate desk surface resists heavy scratching and chipping
- Foot pedal release allows easy height adjustment
- Broad tripod base for extra stability
- GreenGuard Certified



### MODEL NUMBER

141C001

### PRODUCT

Director's Stand

## FOLDING CONDUCTOR'S PODIUM

Whether you're bouncing room-to-room or traveling for a performance, you need a conductor's podium that travels light. The Folding Conductor's Podium is lightweight and durable with laminated plywood sides that securely lock into position to create a stable foundation.

- The perfect complement to the Director's Stand
- Interlocking design for strength and stability
- High-quality built-in handle made for transporting
- Durable grey carpeted surface on solid-core plywood frame
- Tough steel edging and stable, locking hinges for extra support
- Measures 30"w x 30"d x 8"h



Fold the frame and use the carrying handle for transport.

### MODEL NUMBER

021L022

### PRODUCT

Folding Conductor's Podium



# DIRECTOR'S/CONDUCTOR'S STANDS AND PODIUM

## PREFACE® CONDUCTOR'S STAND

The Preface Conductor's stand gives you more. More workspace. More storage. More functionality. With its refined black finish and generous desk size, this stand looks as professional as it performs. Fully adjustable dual-supports allow you to set the desired height and desk angle for optimal comfort. And best of all, you get all this added function without the added weight or cost.

- Extra large desk and lip hold plenty of sheet music, and the accessory shelf holds batons, pencils and more
- Strong, wide base with two upright posts
- Smoothly adjust the height and desk angle to suit your needs
- Tilting desk allows for easy angle adjustment
- Integrated storage box design allows access from both sides
- Bolt-through desk attachment maintains stability
- Durable black powder-coat paint finish for a formal appearance
- Lightweight but durable metal construction weighs 15.3 lb
- Desk measures 29" w x 18½" h
- Height adjustment from 25½" - 49¼", desk lip to floor
- GreenGuard Certified



Storage box extends the full width of the stand and is accessible from both sides.

### MODEL NUMBER

238D001

### PRODUCT

Preface Conductor's Stand





“The Flex is perfect for the technology I use in my classroom, including laptop, smart board, iPad, mixer and my iPhone. I think technology greatly enhances teaching when used correctly and the Flex makes this easy.”

– Matt Bradford

*Director of Bands, Clay Center Schools, Clay Center, Kansas*









# TEACHING TOOLS

Educating the next generation of musicians requires tools that allow music educators to take their teaching to the next level. Wenger understands the needs of classroom educators better than anyone and has developed a line of teaching tools that maximize function, comfort and durability. From individual workstations to storage cabinets, Wenger has everything you need to run a world-class music department and inspire the next generation of great musicians.

\* Product color samples can be provided upon request





## COLORS



Wenger  
Maple



Pebble



Oyster



Cherry



Evening  
Tigris



Fusion  
Maple



Solar Oak



Graphite

Mobile Cabinet worksurface available in Shark Grey only

## CONFIGURATIONS



Rackmount



Drawer



Adjustable Shelf  
and Fixed Shelf



Combination  
Keypad



Power Strip



File Drawer



Slide-Out Shelf



Cable Pass Through



Storage Bins



Call your Wenger  
representative or  
scan the QR code  
to configure your  
cabinet

## ACCESSORIES

(Organizer model): The grid that comes on the back panel and inside door of the Organizer model allows you to add holders and hooks as needed. (not available for mobile models)



Storage Basket



Cable Minder



Single Hook



Mic Stand  
Holder



CD Holder

## MOBILE MEDIA STORAGE CABINETS

As the role of technology in the classroom has increased, so too has the need for storage equipment that allows you to effectively manage and allocate it across classrooms. The Mobile Media Storage Cabinet is a flexible solution that's easy to maneuver and allows you to transport your valuable technology assets quickly, efficiently and safely.

- Mix and match interior components including: Slide-out shelves, drawers, rackmount sections, power strips, accessories and more
- Sturdy wood design, durable worksurface top, rolling casters, and locking doors
- Two sizes available, one column measures 32"w x 24<sup>5</sup>/<sub>8</sub>"d x 43"h and the two column measures 48<sup>1</sup>/<sub>4</sub>"w x 24<sup>5</sup>/<sub>8</sub>"d x 43"h
- Two configurations:
  - Standard - Suited for drawers and shelves
  - Rackmount - Built to hold rackmount units
- Finished in thermally fused polyester laminate



## FIXED MEDIA STORAGE CABINETS

Audio-visual equipment can create an unruly mess when left unorganized. Our Fixed Media Storage Cabinets are purpose-built for the storage and organization of audio-visual equipment. Handsomely designed, unbelievably spacious and secure, these cabinets remove the chaos and help to protect your valuable audio-visual investments.

- Mix and match interior components including: Slide-out shelves, drawers, rackmount sections, power strips, organization grid, accessories and more
- Organize and protect your important equipment in a way that file cabinets and bookshelves can't
- Sturdy wood design, steel pilasters for mounting shelves, and locking doors for security
- Two sizes available, one column measures 21<sup>1</sup>/<sub>2</sub>"w x 24"d x 85<sup>5</sup>/<sub>8</sub>"h and the two column measures 42"w x 24"d x 85<sup>5</sup>/<sub>8</sub>"h
- Three configurations:
  - Standard - Suited for drawers and shelves
  - Organizer - Wire grids let you add hooks and baskets
  - Rackmount - Built to hold rackmount units
- Finished in thermally fused polyester laminate



## REHEARSAL RESOURCE CENTER

Downtime in a classroom is wasted time. The Rehearsal Resource Center puts all your controls, electronics and lesson materials right at your fingertips. Smartly designed and elegant in appearance, the resource center consists of separate left and right units that can be used individually or connected to create a larger workspace. Finally, a resource center that works as hard as you do.

- Ergonomical design with a 39½" desktop height
- Choice of drawers or rackmount spacing and shelves for stereo components
- Five 4" swivel casters for easy portability
- Two lockable rear service doors for access to wiring, with top panel wire grommets
- Rolls through standard 3' doorway
- Side panels in choice of colors below
- Top, bottom and internal panels in graphite
- GREENGUARD Certified



Left Curved Unit

### COLORS



Wenger  
Maple



Pebble



Oyster



Cherry



Evening  
Tigris



Fusion  
Maple



Solar Oak



Graphite top,  
bottom and  
interior panels

### ACCESSORIES



Security Doors



Leg Extensions



Speaker Shelves



Power Strip With  
Master Switch



Pass-Through Folio Insert  
For Distribution Of  
Music/Assignments

MODEL NUMBER	PRODUCT
121C001	Left Curved Unit with Stereo Rack Option with Drawer Option
121C002	Right Curved Unit with Stereo Rack Option with Drawer Option
121C003	Twin Set
121B101	Optional Lower Security Door
121B102	Optional Upper Security Door
121B103	Optional Leg Extensions, set of five
121B105	Optional Folio Inserts, set of two
121B106	Optional Speaker Shelves, set of two





Right Curved Unit



Twin Set Shown

## WARDROBE CABINET

You selflessly devote yourself to your students, the music program and school. Often at the expense of keeping your personal instruments, files and performance attire organized. The Wardrobe Cabinet allows you to store and organize the personal pieces you rely on every day in one secure place.

- Personal space with room to stay organized and clutter-free
- Full, locking door with individual key lets you keep your personal items secure
- Three adjustable shelves for flexibility
- Two Pendafilex file-sized drawers for storing personal files
- Garment compartment with hanger rod and venting holes to help dissipate moisture, mildew, and odors
- Mirror mounted on inside of door
- Bolt-through construction and tamper-resistant hardware
- Shipped fully assembled, with door attached
- Cabinet measures 30" w x 29¼" d x 84" h



### COLORS

Wenger  
Maple

Pebble



Oyster



Cherry

Evening  
TigrisFusion  
Maple

Solar Oak

#### MODEL NUMBER

145V006

#### PRODUCT

Wardrobe Cabinet

## SELECT LAB WORKSTATION

With its winning combination of comfortable ergonomic design, spacious work surfaces and hidden cable management compartment, Wenger has created a workstation that works harder. The Select Lab Workstation puts everything a young musician needs comfortably within reach, and eliminates the annoyance of loose cables and wires on the work surface.

- Choose the model width, number of rackmounts, and whether or not your workstation has adjustable height, wheels, accessories, etc.
- Plenty of room for a computer and all the other lab tech you want
- Electronic piano keyboard fits on the slide-out tray
- Two widths available - 62" or 50" w x 30" d
- Fixed or adjustable height
- Optional 4" diameter rolling casters
- Includes headphone hook with feature that allows the addition of a padlock
- Flip-up compartment allows access to a wire way channel for organizing cords and power strips
- Bottom shelf is optional in fixed-height model only
- GREENGUARD Certified



### COLORS



Wenger  
Maple



Pebble



Oyster



Cherry



Evening  
Tigris



Fusion  
Maple



Solar Oak



Graphite option  
is available for  
Select Lab and  
Essential Lab  
Workstations only.

### CONFIGURATIONS

Call your Wenger representative or go online to configure your cabinet at [www.wengercorp.com/workstations](http://www.wengercorp.com/workstations)



EXAMPLE 1:  
- 62" model  
- Graphite finish  
- Casters



EXAMPLE 2:  
- 50" model  
- Cherry finish  
- Adjustable legs  
and no casters  
- Two rackmounts  
- Bottom shelf

### ACCESSORIES



Cable  
Management



Keyboard Tray



Adjustable  
Height and  
Wheels



Master Power  
Switch



Rackmount



## ESSENTIAL LAB WORKSTATION

Just because space is limited doesn't mean you need to compromise your students' comfort. The Essential Lab Workstation is a sleek, smart solution that packs a lot of features onto a small frame. Its spacious work surface provides ample space for monitors, tablets and keyboards. The c-shaped frame opens legroom for a tighter setup that fosters collaboration between students.

- Standard desk sizes 32" or 42"w x 22"d
- Custom desk sizes available with any width 32" - 49"
- Welded 16-gauge, c-shaped tubular steel frame has a black textured powder-coat paint finish
- Engineered to hold up to 175 lb of equipment
- Desk height is 27<sup>3</sup>/<sub>4</sub>" (28<sup>3</sup>/<sub>4</sub>" with spacers)
- Pull-out computer keyboard shelf measures 24"w x 15<sup>3</sup>/<sub>4</sub>"d x 2"h
- Lockable headphone holder, mountable on either side
- GREENGUARD Certified



### ACCESSORIES



Clear Acrylic  
Music Holder



Steel Spacers



Six-Outlet  
Power Strip



CPU Holder



Headphone  
Holder



Cord  
Organization

#### MODEL NUMBER

256A001

#### PRODUCT

Essential Lab Workstation



## CLASS PIANO WORKSTATION

There's no easier way to instantly add functionality to your digital pianos than with our Class Piano Workstation. This workstation mounts securely to 76- and 88-key digital upright pianos to provide a spacious platform for a computer, speakers, sheet music and other accessories. Non-residue suction cups make the workstation easy to remove and won't damage your instrument.

- Workstation measures 60"w x 18"d x 5½"h
- Fits most 76-key and 88-key flat-top, upright digital pianos
- Pull-out computer keyboard shelf slides out of the way when not in use
- Clear acrylic music holder and mouse pad are included
- Back cover panel conceals cords and protects wiring
- U.L.®-listed six-outlet power strip
- GREENGUARD Certified



Not recommended for pianos with sloping tops.

### COLORS



Wenger Maple



Pebble



Oyster



Cherry



Evening Tigris



Fusion Maple



Solar Oak

#### MODEL NUMBER

225C024

#### PRODUCT

Class Piano Workstation

## PIANO WORK DESK

The Piano Work Desk attaches directly to your Yamaha digital piano, models YPG635 and DGX630, to create a stable work surface for multimedia components. The Piano Work Desk connects at the cross brace of your piano stand for easy installation that does not require additional fasteners.

- Allows work space above the digital piano
- Fits on digital piano, Yamaha YPG635 and DGX630
- Connects to piano stand with existing fasteners, no need to add holes
- Slot to move music stand from piano to desk
- Heavy-duty polyester oyster laminate is adhered to ¾" (19 mm) thermofused industrial-grade composite wood with 3 mm vinyl edgebanding on all edges
- Reinforced for strength with steel sheet metal with grey powder-coat paint finish
- Supported by steel tubes with grey powder-coat paint finish
- Desk dimensions are 59.5" long x 10" wide (1511 x 254 mm)



Piano stand not included

### COLORS



Oyster

#### MODEL NUMBER

225A100

#### PRODUCT

Piano Work Desk

## PORCELAIN STEEL MARKERBOARD AND MUSIC NOTATION BOARD

Porcelain steel surface reduces light distortion, produces exceptional color contrast, and eliminates marker ghosting to enhance visibility and optimize eye comfort.

- Superior environmental porcelain steel markerboard
- Surface contains no VOC's
- Includes L-clips, Rawlplugs, and screws for installation

Porcelain steel markerboard

Graphic board with music staves



MODEL NUMBER	PRODUCT
174A100.01	48"w x 33¾"h Porcelain Steel Markerboard
174A100.02	6'w x 4'h Porcelain Steel Markerboard
174A100.03	8'w x 4'h Porcelain Steel Markerboard
174A100.04	10'w x 4'h Porcelain Steel Markerboard
174A100.05	12'w x 4'h Porcelain Steel Markerboard
174A100.06	16'w x 4'h Porcelain Steel Markerboard
174A101.22	6'w x 4'h Graphic Board with music staves
174A101.23	8'w x 4'h Graphic Board with music staves

## PLATINUM REVERSIBLE BOARD

Provides twice the functional surface of any traditional wall-mounted board. With this two-sided board you can choose from porcelain steel on both sides, porcelain steel with music staves, or porcelain steel with cork tackboard.

- Porcelain steel is magnetic for even more versatility
- Environmentally friendly – No VOC's
- Steel is made from 30% recycled material and surface is 99% recyclable



MODEL NUMBER	PRODUCT
174A300.50	30"w x 40"h Porcelain Both Sides
174A300.60	6'w x 4'h Porcelain Both Sides
174A300.51	30"w x 40"h Porcelain/Natural Cork
174A300.61	6'w x 4'h Porcelain/Natural Cork
174A300.52	30"w x 40"h Porcelain/Porcelain with music staves
174A300.62	6'w x 4'h Porcelain/Porcelain with music staves







Wenger®

# ELEMENTARY PRODUCTS

Young learners require educational tools that are interactive and easy to engage with. Wenger elementary education products fit this description. Because we make it a priority to listen to teacher feedback, we understand what works and what doesn't. That's why all our innovative products have been designed to keep young learners engaged in the lessons and, most importantly, having fun.

\* Product color samples can be provided upon request





# ELEMENTARY PRODUCTS

## FLIPFORMS®

Who says functional can't also be fun? With flipFORMS, Wenger has created an innovative classroom riser solution that's both easy to use for educators and fun to use for students. The Interactive design promotes learning by keeping students' bodies moving and their minds engaged. FlipFORMS can be configured into four positions and offers teachers nearly limitless possibilities.

- Designed and built to specifically meet the needs of the elementary classroom
- Integrated wheels allow for easy transport from one location to another
- Built-in flexibility for smooth transitions between activities
- Built with molded, high-density polyethylene making them nearly indestructible



## CONFIGURATIONS

Configure into four positions: Rolling Position | Seated Riser Position | Platform Position | Standing Riser Position



### COLORS

#### BASE



Grey

#### TOP



Blue



Green



Yellow



Red



Grey



Black base is available with black top only

GRADE LEVEL	2-STEP TIERED SEATING CAPACITY	3-STEP RISER CAPACITY*
grades 1-3	8 students/unit	16 students/unit
grades 4-6	6 students/unit	12 students/unit

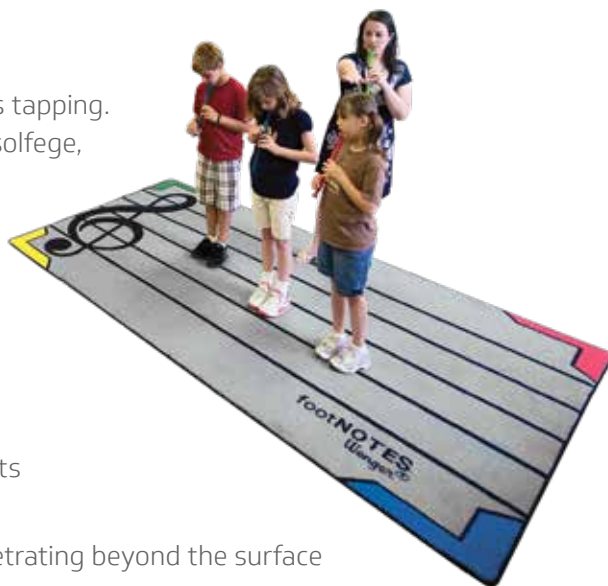
\*Capacity using the floor as the front row

MODEL NUMBER	PRODUCT
025D028	Black Top/Black Base, flipFORMS Single Units
025D027	Grey Top/Grey Base, flipFORMS Single Units
025D002	Blue Top/Grey Base, flipFORMS Single Units
025D003	Green Top/Grey Base, flipFORMS Single Units
025D004	Yellow Top/Grey Base, flipFORMS Single Units
025D005	Red Top/Grey Base, flipFORMS Single Units
1801002	Set of Four: One each of Blue, Green, Yellow and Red

## FOOTNOTES®

Here's something that's guaranteed to get your students' toes tapping. Our footNOTES rug designs help you teach notation, melody, solfege, musical symbols and more in a fun and interactive way.

- Designed to specifically meet the needs of the elementary classroom music learning environment
- Interactive designs that keep students' bodies moving and their minds engaged
- PrintWorks™ precision dye technology
- Easy roll-up storage
- WearOn® Nylon designed to last in demanding environments
- Softflex® backing system
- StainSmart® triple-action protectant keeps spills from penetrating beyond the surface
- Impervion® antimicrobial technology resists growth of bacteria, mold, mildew
- Edges are bound and double stitched
- Meets NFPA Class I Flammability Standards
- CRI Green Label Plus™ Certification for lowest emitting VOC levels



### footNOTES Rug Sizes:

- 7'8"w x 5'4"d rectangle
- 10'9"w x 7'8"d rectangle
- 7'7" round
- 13'2" round



**NEW**

### Rectangle footNOTES Musical Symbols Rug Sizes:

- 10'9"w x 7'8"d rectangle
- 13'2"w x 10'9"d rectangle



**NEW**

### Round footNOTES Tempo Rug Sizes:

- 7'7" round
- 13'2" round



MODEL NUMBER	PRODUCT
180B009	7'8"w x 5'4"d Rectangle footNOTES Rug
180B001	10'9"w x 7'8"d Rectangle footNOTES Rug
180B010	13'2" Round footNOTES Rug
180B011	7'7" Round footNOTES Rug
180C026	10'9"w x 7'8"d Rectangle footNOTES Musical Symbols Rug
180C026	13'2"w x 10'9"d Rectangle footNOTES Musical Symbols Rug
180C050	7'7" Round footNOTES Tempo Rug
180C051	13'2" Round footNOTES Tempo Rug





# ELEMENTARY PRODUCTS

## TEACHERTAXI® CART

Teaching is not a stationary discipline. You're constantly moving around the classroom and jumping from one subject to the next. The teacherTAXI is the indispensable mobile storage cart that's fast, nimble and provides easy access to all your essential tools and materials – books, instruments, sheet music, etc. It's like having an entire classroom on wheels.

- Tough 1½" diameter powder-coated curved steel tubular frame
- Two 4" front pivoting swivel casters and two 12" static rear wheels for smooth maneuverability and exceptional stability
- Easily fits through standard doorways, hallways, and elevators
- Total cart weight empty: approximately 85 lb
- Adjustable center shelf can also be removed
- Two cupholders (one large, one small)
- Built-in pencil and marker tray on all shelves
- GreenGuard Certified



### ACCESSORIES



Lockable  
Storage Drawer



Slide-Out  
Shelf



Integrated  
Power Strip



Semi-Opaque  
Clear Bins

### COLORS FRAME



Silver

#### MODEL NUMBER

204A001

204A001-drawer

204A001-slide-out shelf

#### PRODUCT

teacherTAXI Cart

teacherTAXI Cart with lockable drawer

teacherTAXI Cart with slide-out shelf



## POSTER/TEACHING CABINET

With its adjustable shelf space and color-coded bins, this cabinet is the perfect storage solution for large-format print media like posters, maps and other visual aids, and general classroom organization.

- Full-length lockable doors
- Leveling pads on base
- Includes three medium red bins, four large blue bins and six small yellow bins
- Bins fit on shelves or on special hangers (included)
- $\frac{3}{4}$ " thermally fused composite wood
- Two adjustable shelves in lower cabinet, three in upper cabinet
- Cabinet measures 39"w x 29 $\frac{1}{4}$ "d x 72"h
- GreenGuard Certified



### COLORS



Wenger  
Maple



Pebble



Oyster



Cherry



Evening  
Tigris



Fusion  
Maple



Solar Oak

## SMALL INSTRUMENT CABINET

Purpose-built for small instrument storage and organization, this cabinet features color-coded bins and adjustable shelves to allow you to configure the unit to fit the specific needs of your classroom.

- Full-length lockable doors
- Leveling pads on base
- Bins fit on shelves or on special hangers (included)
- $\frac{3}{4}$ " thermally fused composite wood
- Includes five medium red bins, two large blue bins and four small yellow bins
- Six adjustable shelves in lower cabinet
- Two adjustable shelves in upper cabinet
- Cabinet measures 36"w x 23 $\frac{1}{4}$ "d x 72"h
- GreenGuard Certified



### COLORS



Wenger  
Maple



Pebble



Oyster



Cherry



Evening  
Tigris



Fusion  
Maple



Solar Oak

#### MODEL NUMBER

169D001

169D001

#### PRODUCT

Poster/Teaching Cabinet

Small Instrument Cabinet





# ELEMENTARY PRODUCTS

## ORFFGARAGE

As the name suggests, the ORFFmobile and ORFFgarage are tailor-made to simplify the storage and transport of your valuable ORFF instruments. Now, even those big bass xylophones can be safely moved into playing position and then out of the way when not in use. And when it's music time, three stable surfaces allow you to put together an ensemble in a snap.

- Four adjustable shelves in upper cabinet
- Full-length lockable doors
- Leveling pads on base
- Cabinet measures 48"w x 29 $\frac{3}{4}$ "d x 72"h
- $\frac{3}{4}$ " thermally fused composite wood
- GreenGuard Certified



### COLORS



Wenger  
Maple



Pebble



Oyster



Cherry



Evening  
Tigris



Fusion  
Maple



Solar Oak

#### MODEL NUMBER

168E001

#### PRODUCT

ORFFgarage

## ORFFMOBILE

- Makes it easy to move instruments and always keep them in ready-to-play position
- Three playing surfaces at different heights accommodate any child or instrument
- Solid-steel construction and  $\frac{1}{8}$ " ABS plastic shelves create an extremely stable playing surface
- Easy-rolling casters make transportation smooth and stable when folded
- Integrated mallet storage cups on each side



#### MODEL NUMBER

167D001

#### PRODUCT

ORFFmobile

## AIRPRO® LOCKERS

AirPro® Lockers are designed for durability, functionality, and sanitation, making them ideal for elementary schools. Their open-grid design promotes airflow to keep items dry and clean, while elevated construction simplifies floor cleaning beneath the lockers.

- 2" grid design allows for security, visibility and sanitation
- Metal lockers with optional integrated seat
- Four door options available including wood, grille, perforated metal, and open
- Available in two tone colors at no additional cost
- Powder coated steel makes for a very strong, long lasting, reliable locker solution
- Elevated off the floor for easy cleaning and maximizes airflow
- 4-door options with locker
- Available in single and double tier
- 10-Year Warranty



Double Tier

Single Tier









# STORAGE SOLUTIONS

Your music equipment and garments require storage that is organized and durable. Wenger offers storage options that are reliable, adjustable and mobile for your theater costumes, folios, sheet music and beyond. With more than 75 years of experience, there's a reason Wenger is the leader in instrument and garment storage.

\* Product color samples can be provided upon request



## ULTRASTOR® STORAGE CABINETS

UltraStor Cabinets are the world's most trusted and proven instrument and uniform cabinets. The quality materials, solid construction and adjustable shelf option make these cabinets the industry's go-to storage choice.

- Load-tested doors, bolt-through construction and polyester laminate
- Heavy-duty hardware, top-quality doors, and tamper-resistant shelves
- Designed to specifically meet the needs of educators with the right size compartments, cabinet heights and features specific to instruments and equipment
- Choose between solid doors, straight or waterfall grille doors or no doors
- Attractive polyester laminate and composite wood core resists chipping and looks new years longer than other laminates
- Shelves feature patented ventilation ridges and rounded front edges, improving airflow crucial to musical instrument, equipment and garment longevity
- Fixed or adjustable shelf options available
- Three heights available: 85<sup>5</sup>/<sub>8</sub>", 69<sup>3</sup>/<sub>4</sub>" and 38<sup>5</sup>/<sub>16</sub>"
- Standard and narrow widths available
- Available with right- or left-hinged (standard) doors for easy access
- Seismic-compliant bracing available upon request
- Available in several core substrates to meet your specific needs: fire-rated, industrial-grade composite wood with no added formaldehyde (standard), moisture-resistant, FSC®-certified (FSC® C103872) and Vencore (plywood)
- GREENGUARD Certified



### COLORS



Wenger  
Maple



Pebble



Oyster



Cherry



Evening  
Tigris



Fusion  
Maple



Solar Oak

### CONFIGURATIONS

Wenger Cabinets come in a wide variety of configurations. Call your Wenger representative for the best solution and budget estimate for your program.



Robe and Uniform Storage



Fixed Shelf  
Instrument  
Storage



Adjustable  
Shelf  
Instrument  
Storage



38<sup>5</sup>/<sub>16</sub>"  
Instrument  
Storage



Instrument Storage  
with Fixed Shelf



Instrument Storage with Adjustable Shelf



Robe and Uniform Storage





# STORAGE SOLUTIONS

## ACOUSTICABINETS®

Add instrument storage cabinets to your rehearsal room without sacrificing the acoustic integrity of your space with AcoustiCabinets. Our patented design is the industry leader in sound absorption, security and durability.

- Independently tested solution provides more than twice the sound absorption as standard storage cabinets
- Unique curved grille door design minimizes a room's cubic volume loss and reduces distracting vibrations
- Load-tested doors, bolt-through construction and polyester laminate
- With ridges designed for ventilation and a rounded front to prevent damage to instruments, our one-piece polyethylene shelves are unique in the industry and nearly indestructible
- Heavy-duty hardware, top-quality doors and tamper-resistant shelves keep your valuable investments safe
- Available in all standard Wenger cabinet sizes
- GreenGuard Certified



Four cabinets shown:  
#6, #4, #4 and #10



A rehearsal room with Wenger's AcoustiCabinets and used in conjunction with absorber and diffuser panels can create an acoustically balanced environment. Loudness is controlled and balanced over the full audible range.



## CORNER STORAGE CABINETS

Maximize your space with cabinets designed to fit corner spaces. As one of our most versatile storage options, the Corner cabinets fit perfectly into any corner and can be equipped with up to six adjustable stationary or revolving shelves, as well as fixed or revolving garment bars.

- Cabinet measures 48 $\frac{1}{4}$ "w x 48 $\frac{1}{4}$ "d x 84 $\frac{5}{8}$ "h
- Heavy-duty construction
- GREENGUARD Certified

### STATIONARY SHELF MODEL

- Door opening is 24" wide for easy access
- Up to six 48" wide adjustable shelves
- Side panels are 29" deep
- Accommodates adjustable 48" wide shelves
- Available with stationary hanger bars or shelves

### REVOLVING SHELF MODEL

- Available with revolving hanger bars or shelves
- Includes deflector panel to prevent items from falling off revolving shelves
- Will accommodate up to six 360° shelves



Three cabinets shown: #4, #41 Corner Cabinet and #2



Stationary Shelf  
Garment Storage



Equipment  
Storage



Revolving Shelf  
Garment Storage



Flag  
Storage

### ACOUSTICABINET AND CORNER STORAGE CABINET COLORS



Wenger  
Maple



Pebble



Oyster



Cherry



Evening  
Tigris



Fusion  
Maple



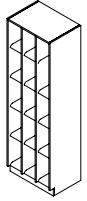
Solar Oak

### CONFIGURATIONS

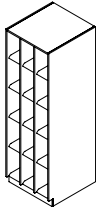
Wenger Cabinets come in a wide variety of configurations. Call your Wenger representative for the best solution and budget estimate for your program.



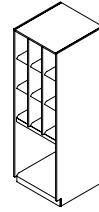
## CLARINET, FLUTE, PICCOLO, OBOE SPECS



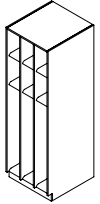
**1**  
CABINET SIZE: 27<sup>1</sup>/<sub>2</sub>"w x 19<sup>1</sup>/<sub>4</sub>"d x 85<sup>5</sup>/<sub>8</sub>"h  
Narrow Width: 21<sup>1</sup>/<sub>2</sub>"  
Weight: 282 lb  
COMPARTMENT SIZES: 8"w x 17<sup>3</sup>/<sub>8</sub>"d x 14<sup>5</sup>/<sub>8</sub>"h  
Narrow Width: 6"



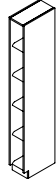
**2**  
CABINET SIZE: 27<sup>1</sup>/<sub>2</sub>"w x 29<sup>1</sup>/<sub>4</sub>"d x 85<sup>5</sup>/<sub>8</sub>"h  
Narrow Width: 21<sup>1</sup>/<sub>2</sub>"  
Weight: 367 lb  
COMPARTMENT SIZES: 8"w x 27<sup>3</sup>/<sub>8</sub>"d x 14<sup>5</sup>/<sub>8</sub>"h  
Narrow Width: 6"



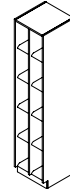
**3**  
CABINET SIZE: 27<sup>1</sup>/<sub>2</sub>"w x 29<sup>1</sup>/<sub>4</sub>"d x 85<sup>5</sup>/<sub>8</sub>"h  
Narrow Width: 21<sup>1</sup>/<sub>2</sub>"  
Weight: 319 lb  
COMPARTMENT SIZES: 8"w x 27<sup>3</sup>/<sub>8</sub>"d x 14<sup>5</sup>/<sub>8</sub>"h,  
25<sup>1</sup>/<sub>2</sub>"w x 27<sup>3</sup>/<sub>8</sub>"d x 25"h  
Narrow Width: 6", 19<sup>1</sup>/<sub>2</sub>"



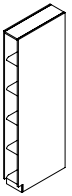
**18**  
CABINET SIZE: 27<sup>1</sup>/<sub>2</sub>"w x 29<sup>1</sup>/<sub>4</sub>"d x 85<sup>5</sup>/<sub>8</sub>"h  
Weight: 286 lb  
COMPARTMENT SIZES: 8"w x 27<sup>3</sup>/<sub>8</sub>"d x 14<sup>5</sup>/<sub>8</sub>"h,  
8"w x 27<sup>3</sup>/<sub>8</sub>"d x 48<sup>1</sup>/<sub>4</sub>"h



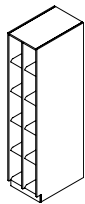
**20**  
CABINET SIZE: 10"w x 19<sup>1</sup>/<sub>4</sub>"d x 85<sup>5</sup>/<sub>8</sub>"h  
Narrow Width: 8"  
Weight: 136 lb  
COMPARTMENT SIZES: 8"w x 17<sup>3</sup>/<sub>8</sub>"d x 14<sup>5</sup>/<sub>8</sub>"h  
Narrow Width: 6"



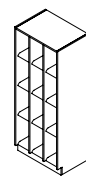
**21**  
CABINET SIZE: 18<sup>3</sup>/<sub>4</sub>"w x 19<sup>1</sup>/<sub>4</sub>"d x 85<sup>5</sup>/<sub>8</sub>"h  
Narrow Width: 14<sup>3</sup>/<sub>4</sub>"  
Weight: 207 lb  
COMPARTMENT SIZES: 8"w x 17<sup>3</sup>/<sub>8</sub>"d x 14<sup>5</sup>/<sub>8</sub>"h  
Narrow Width: 6"



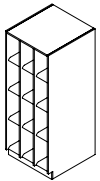
**22**  
CABINET SIZE: 10"w x 29<sup>1</sup>/<sub>4</sub>"d x 85<sup>5</sup>/<sub>8</sub>"h  
Narrow Width: 8"  
Weight: 220 lb  
COMPARTMENT SIZES: 8"w x 27<sup>3</sup>/<sub>8</sub>"d x 14<sup>5</sup>/<sub>8</sub>"h  
Narrow Width: 6"



**23**  
CABINET SIZE: 18<sup>3</sup>/<sub>4</sub>"w x 29<sup>1</sup>/<sub>4</sub>"d x 85<sup>5</sup>/<sub>8</sub>"h  
Narrow Width: 14<sup>3</sup>/<sub>4</sub>"  
Weight: 320 lb  
COMPARTMENT SIZES: 8"w x 27<sup>3</sup>/<sub>8</sub>"d x 14<sup>5</sup>/<sub>8</sub>"h  
Narrow Width: 6"



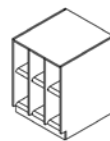
**25**  
CABINET SIZE: 27<sup>1</sup>/<sub>2</sub>"w x 19<sup>1</sup>/<sub>4</sub>"d x 69<sup>3</sup>/<sub>4</sub>"h  
Narrow Width: 21<sup>1</sup>/<sub>2</sub>"  
Weight: 315 lb  
COMPARTMENT SIZES: 8"w x 17<sup>3</sup>/<sub>8</sub>"d x 14<sup>5</sup>/<sub>8</sub>"h  
Narrow Width: 6"



**26**  
CABINET SIZE: 27<sup>1</sup>/<sub>2</sub>"w x 29<sup>1</sup>/<sub>4</sub>"d x 69<sup>3</sup>/<sub>4</sub>"h  
Narrow Width: 21<sup>1</sup>/<sub>2</sub>"  
Weight: 299 lb  
COMPARTMENT SIZES: 8"w x 27<sup>3</sup>/<sub>8</sub>"d x 14<sup>5</sup>/<sub>8</sub>"h  
Narrow Width: 6"



**51**  
CABINET SIZE: 27<sup>1</sup>/<sub>2</sub>"w x 19<sup>1</sup>/<sub>4</sub>"d x 38<sup>5</sup>/<sub>16</sub>"h  
Narrow Width: 21<sup>1</sup>/<sub>2</sub>"  
Weight: 108 lb  
COMPARTMENT SIZES: 8"w x 17<sup>3</sup>/<sub>8</sub>"d x 14<sup>5</sup>/<sub>8</sub>"h  
Narrow Width: 6"



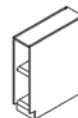
**52**  
CABINET SIZE: 27<sup>1</sup>/<sub>2</sub>"w x 29<sup>1</sup>/<sub>4</sub>"d x 38<sup>5</sup>/<sub>16</sub>"h  
Narrow Width: 21<sup>1</sup>/<sub>2</sub>"  
Weight: 150 lb  
COMPARTMENT SIZES: 8"w x 27<sup>3</sup>/<sub>8</sub>"d x 14<sup>5</sup>/<sub>8</sub>"h  
Narrow Width: 6"



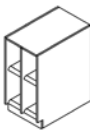
**57**  
CABINET SIZE: 10"w x 19<sup>1</sup>/<sub>4</sub>"d x 38<sup>5</sup>/<sub>16</sub>"h  
Narrow Width: 8"  
Weight: 57 lb  
COMPARTMENT SIZES: 8"w x 17<sup>3</sup>/<sub>8</sub>"d x 14<sup>5</sup>/<sub>8</sub>"h  
Narrow Width: 6"



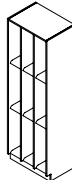
**58**  
CABINET SIZE: 18<sup>3</sup>/<sub>4</sub>"w x 19<sup>1</sup>/<sub>4</sub>"d x 38<sup>5</sup>/<sub>16</sub>"h  
Narrow Width: 14<sup>3</sup>/<sub>4</sub>"  
Weight: 81 lb  
COMPARTMENT SIZES: 8"w x 17<sup>3</sup>/<sub>8</sub>"d x 14<sup>5</sup>/<sub>8</sub>"h  
Narrow Width: 6"



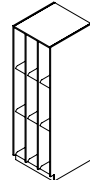
**59**  
CABINET SIZE: 10"w x 29<sup>1</sup>/<sub>4</sub>"d x 38<sup>5</sup>/<sub>16</sub>"h  
Narrow Width: 8"  
Weight: 100 lb  
COMPARTMENT SIZES: 8"w x 27<sup>3</sup>/<sub>8</sub>"d x 14<sup>5</sup>/<sub>8</sub>"h  
Narrow Width: 6"



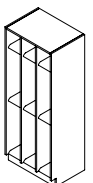
**60**  
CABINET SIZE: 18<sup>3</sup>/<sub>4</sub>"w x 29<sup>1</sup>/<sub>4</sub>"d x 38<sup>5</sup>/<sub>16</sub>"h  
Narrow Width: 14<sup>3</sup>/<sub>4</sub>"  
Weight: 124 lb  
COMPARTMENT SIZES: 8"w x 27<sup>3</sup>/<sub>8</sub>"d x 14<sup>5</sup>/<sub>8</sub>"h  
Narrow Width: 6"



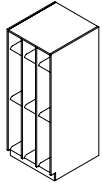
**70 (Adjustable Shelf)**  
CABINET SIZE: 27<sup>1</sup>/<sub>2</sub>"w x 19<sup>1</sup>/<sub>4</sub>"d x 85<sup>5</sup>/<sub>8</sub>"h  
Narrow Width: 21<sup>1</sup>/<sub>2</sub>"  
Weight: 282 lb  
COMPARTMENT SIZES: 8"w x 17<sup>3</sup>/<sub>8</sub>"d  
Height Range: 7<sup>5</sup>/<sub>8</sub>" to 78<sup>1</sup>/<sub>8</sub>"  
Narrow Width: 6"



**71 (Adjustable Shelf)**  
CABINET SIZE: 27<sup>1</sup>/<sub>2</sub>"w x 29<sup>1</sup>/<sub>4</sub>"d x 85<sup>5</sup>/<sub>8</sub>"h  
Narrow Width: 21<sup>1</sup>/<sub>2</sub>"  
Weight: 367 lb  
COMPARTMENT SIZES: 8"w x 27<sup>3</sup>/<sub>8</sub>"d  
Height Range: 7<sup>5</sup>/<sub>8</sub>" to 78<sup>1</sup>/<sub>8</sub>"  
Narrow Width: 6"



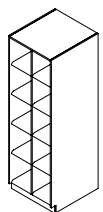
**77 (Adjustable Shelf)**  
CABINET SIZE: 27<sup>1</sup>/<sub>2</sub>"w x 19<sup>1</sup>/<sub>4</sub>"d x 69<sup>3</sup>/<sub>4</sub>"h  
Narrow Width: 21<sup>1</sup>/<sub>2</sub>"  
Weight: 315 lb  
COMPARTMENT SIZES: 8"w x 17<sup>3</sup>/<sub>8</sub>"d  
Height Range: 7<sup>7</sup>/<sub>8</sub>" to 62<sup>1</sup>/<sub>4</sub>"  
Narrow Width: 6"



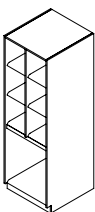
**78 (Adjustable Shelf)**  
CABINET SIZE: 27<sup>1</sup>/<sub>2</sub>"w x 29<sup>1</sup>/<sub>4</sub>"d x 69<sup>3</sup>/<sub>4</sub>"h  
Narrow Width: 21<sup>1</sup>/<sub>2</sub>"  
Weight: 299 lb  
COMPARTMENT SIZES: 8"w x 27<sup>3</sup>/<sub>8</sub>"d  
Height Range: 7<sup>7</sup>/<sub>8</sub>" to 62<sup>1</sup>/<sub>4</sub>"  
Narrow Width: 6"

**Note:** when the shelves are adjusted, the cabinet will accommodate different instruments.

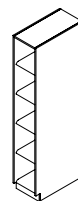
## TRUMPET, CORNET, SAXOPHONE SPECS



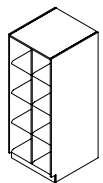
**4**  
CABINET SIZE: 27 $\frac{1}{2}$ "w x 29 $\frac{1}{4}$ "d x 85 $\frac{5}{8}$ "h  
Narrow Width: 21 $\frac{1}{2}$ "  
Weight: 313 lb  
COMPARTMENT SIZES: 12 $\frac{3}{8}$ "w x 27 $\frac{3}{8}$ "d x 14 $\frac{5}{8}$ "h  
Narrow Width: 9 $\frac{3}{8}$ "



**6**  
CABINET SIZE: 27 $\frac{1}{2}$ "w x 29 $\frac{1}{4}$ "d x 85 $\frac{5}{8}$ "h  
Narrow Width: 21 $\frac{1}{2}$ "  
Weight: 285 lb  
COMPARTMENT SIZES: 12 $\frac{3}{8}$ "w x 27 $\frac{3}{8}$ "d x 14 $\frac{5}{8}$ "h,  
25 $\frac{1}{2}$ "w x 27 $\frac{3}{8}$ "d x 25"h  
Narrow Width: 9 $\frac{3}{8}$ ", 19 $\frac{1}{2}$ "



**13**  
CABINET SIZE: 14 $\frac{3}{8}$ "w x 29 $\frac{1}{4}$ "d x 85 $\frac{5}{8}$ "h  
Narrow Width: 11 $\frac{3}{8}$ "  
Weight: 199 lb  
COMPARTMENT SIZES: 12 $\frac{3}{8}$ "w x 27 $\frac{3}{8}$ "d x 14 $\frac{5}{8}$ "h  
Narrow Width: 9 $\frac{3}{8}$ "



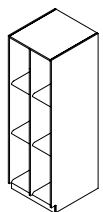
**27**  
CABINET SIZE: 27 $\frac{1}{2}$ "w x 29 $\frac{1}{4}$ "d x 69 $\frac{3}{4}$ "h  
Narrow Width: 21 $\frac{1}{2}$ "  
Weight: 256 lb  
COMPARTMENT SIZES: 12 $\frac{3}{8}$ "w x 27 $\frac{3}{8}$ "d x 14 $\frac{5}{8}$ "h  
Narrow Width: 9 $\frac{3}{8}$ "



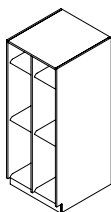
**54**  
CABINET SIZE: 27 $\frac{1}{2}$ "w x 29 $\frac{1}{4}$ "d x 38 $\frac{5}{16}$ "h  
Narrow Width: 21 $\frac{1}{2}$ "  
Weight: 127 lb  
COMPARTMENT SIZES: 12 $\frac{3}{8}$ "w x 27 $\frac{3}{8}$ "d x 14 $\frac{5}{8}$ "h  
Narrow Width: 9 $\frac{3}{8}$ "



**56**  
CABINET SIZE: 14 $\frac{3}{8}$ "w x 29 $\frac{1}{4}$ "d x 38 $\frac{5}{16}$ "h  
Narrow Width: 11 $\frac{3}{8}$ "  
Weight: 85 lb  
COMPARTMENT SIZES: 12 $\frac{3}{8}$ "w x 27 $\frac{3}{8}$ "d x 14 $\frac{5}{8}$ "h  
Narrow Width: 9 $\frac{3}{8}$ "



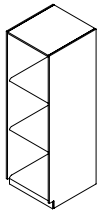
**72 (Adjustable Shelf)**  
CABINET SIZE: 27 $\frac{1}{2}$ "w x 29 $\frac{1}{4}$ "d x 85 $\frac{5}{8}$ "h  
Narrow Width: 21 $\frac{1}{2}$ "  
Weight: 313 lb  
COMPARTMENT SIZES: 12 $\frac{3}{8}$ "w x 27 $\frac{3}{8}$ "d  
Height Range: 7 $\frac{5}{8}$ " to 78 $\frac{1}{8}$ "  
Narrow Width: 9 $\frac{3}{8}$ "



**79 (Adjustable Shelf)**  
CABINET SIZE: 27 $\frac{1}{2}$ "w x 29 $\frac{1}{4}$ "d x 69 $\frac{3}{4}$ "h  
Narrow Width: 21 $\frac{1}{2}$ "  
Weight: 256 lb  
COMPARTMENT SIZES: 12 $\frac{3}{8}$ "w x 27 $\frac{3}{8}$ "d  
Height Range: 7 $\frac{1}{8}$ " to 62 $\frac{1}{4}$ "  
Narrow Width: 9 $\frac{3}{8}$ "

*Note: when the shelves are adjusted, the cabinet will accommodate different instruments.*

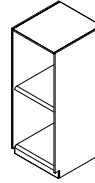
## FRENCH HORN, ALTO HORN SPECS



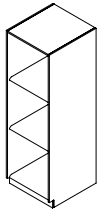
**10**  
CABINET SIZE: 27<sup>1</sup>/<sub>2</sub>"w x 29<sup>1</sup>/<sub>4</sub>"d x 85<sup>5</sup>/<sub>8</sub>"h  
Narrow Width: 21<sup>1</sup>/<sub>2</sub>"  
Weight: 248 lb  
COMPARTMENT SIZES: 25<sup>1</sup>/<sub>2</sub>"w x 27<sup>3</sup>/<sub>8</sub>"d x 25"h  
Narrow Width: 19<sup>1</sup>/<sub>2</sub>"



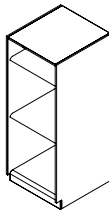
**53**  
CABINET SIZE: 27<sup>1</sup>/<sub>2</sub>"w x 29<sup>1</sup>/<sub>4</sub>"d x 38<sup>5</sup>/<sub>16</sub>"h  
Narrow Width: 21<sup>1</sup>/<sub>2</sub>"  
Weight: 113 lb  
COMPARTMENT SIZE: 25<sup>1</sup>/<sub>2</sub>"w x 27<sup>3</sup>/<sub>8</sub>"d x 25"h  
Narrow Width: 19<sup>1</sup>/<sub>2</sub>"



**65**  
CABINET SIZE: 27<sup>1</sup>/<sub>2</sub>"w x 29<sup>1</sup>/<sub>4</sub>"d x 69<sup>3</sup>/<sub>4</sub>"h  
Narrow Width: 21<sup>1</sup>/<sub>2</sub>"  
Weight: 210 lb  
COMPARTMENT SIZE: 25<sup>1</sup>/<sub>2</sub>"w x 27<sup>3</sup>/<sub>8</sub>"d x 30<sup>3</sup>/<sub>4</sub>"h  
Narrow Width: 19<sup>1</sup>/<sub>2</sub>"



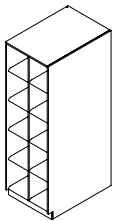
**74 (Adjustable Shelf)**  
CABINET SIZE: 27<sup>1</sup>/<sub>2</sub>"w x 29<sup>1</sup>/<sub>4</sub>"d x 85<sup>5</sup>/<sub>8</sub>"h  
Narrow Width: 21<sup>1</sup>/<sub>2</sub>"  
Weight: 248 lb  
COMPARTMENT SIZES: 25<sup>1</sup>/<sub>2</sub>"w x 27<sup>3</sup>/<sub>8</sub>"d  
Height Range: 7" to 78<sup>1</sup>/<sub>8</sub>"  
Narrow Width: 19<sup>1</sup>/<sub>2</sub>"



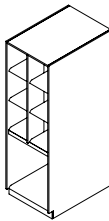
**81 (Adjustable Shelf)**  
CABINET SIZE: 27<sup>1</sup>/<sub>2</sub>"w x 29<sup>1</sup>/<sub>4</sub>"d x 69<sup>3</sup>/<sub>4</sub>"h  
Narrow Width: 21<sup>1</sup>/<sub>2</sub>"  
Weight: 195 lb  
COMPARTMENT SIZES: 25<sup>1</sup>/<sub>2</sub>"w x 27<sup>3</sup>/<sub>8</sub>"d  
Height Range: 7<sup>1</sup>/<sub>8</sub>" to 62<sup>1</sup>/<sub>4</sub>"  
Narrow Width: 19<sup>1</sup>/<sub>2</sub>"

**NOTE:** when the shelves are adjusted, the cabinet will accommodate different instruments.

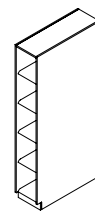
## TROMBONE, BASSOON, BASS CLARINET, VIOLIN/VIOLA SPECS



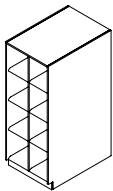
**5**  
CABINET SIZE: 27<sup>1</sup>/<sub>2</sub>"w x 39<sup>1</sup>/<sub>4</sub>"d x 85<sup>5</sup>/<sub>8</sub>"h  
Narrow Width: 21<sup>1</sup>/<sub>2</sub>"  
Weight: 383 lb  
COMPARTMENT SIZES: 12<sup>3</sup>/<sub>8</sub>"w x 37<sup>3</sup>/<sub>8</sub>"d x 14<sup>5</sup>/<sub>8</sub>"h  
Narrow Width: 9<sup>3</sup>/<sub>8</sub>"



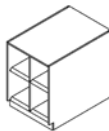
**7**  
CABINET SIZE: 27<sup>1</sup>/<sub>2</sub>"w x 39<sup>1</sup>/<sub>4</sub>"d x 85<sup>5</sup>/<sub>8</sub>"h  
Narrow Width: 21<sup>1</sup>/<sub>2</sub>"  
Weight: 351 lb  
COMPARTMENT SIZES: 12<sup>3</sup>/<sub>8</sub>"w x 37<sup>3</sup>/<sub>8</sub>"d x 14<sup>5</sup>/<sub>8</sub>"h,  
25<sup>1</sup>/<sub>2</sub>"w x 37<sup>3</sup>/<sub>8</sub>"d x 25"h  
Narrow Width: 9<sup>3</sup>/<sub>8</sub>", 19<sup>1</sup>/<sub>2</sub>"



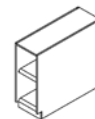
**24**  
CABINET SIZE: 14<sup>3</sup>/<sub>8</sub>"w x 39<sup>1</sup>/<sub>4</sub>"d x 85<sup>5</sup>/<sub>8</sub>"h  
Narrow Width: 11<sup>3</sup>/<sub>8</sub>"  
Weight: 229 lb  
COMPARTMENT SIZE: 12<sup>3</sup>/<sub>8</sub>"w x 37<sup>3</sup>/<sub>8</sub>"d x 14<sup>5</sup>/<sub>8</sub>"h  
Narrow Width: 9<sup>3</sup>/<sub>8</sub>"



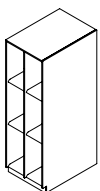
**28**  
CABINET SIZE: 27<sup>1</sup>/<sub>2</sub>"w x 39<sup>1</sup>/<sub>4</sub>"d x 69<sup>3</sup>/<sub>4</sub>"h  
Narrow Width: 21<sup>1</sup>/<sub>2</sub>"  
Weight: 302 lb  
COMPARTMENT SIZE: 12<sup>3</sup>/<sub>8</sub>"w x 37<sup>3</sup>/<sub>8</sub>"d x 14<sup>5</sup>/<sub>8</sub>"h  
Narrow Width: 9<sup>3</sup>/<sub>8</sub>"



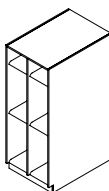
**55**  
CABINET SIZE: 27<sup>1</sup>/<sub>2</sub>"w x 39<sup>1</sup>/<sub>4</sub>"d x 38<sup>5</sup>/<sub>16</sub>"h  
Narrow Width: 21<sup>1</sup>/<sub>2</sub>"  
Weight: 162 lb  
COMPARTMENT SIZES: 12<sup>3</sup>/<sub>8</sub>"w x 37<sup>3</sup>/<sub>8</sub>"d x 14<sup>5</sup>/<sub>8</sub>"h  
Narrow Width: 9<sup>3</sup>/<sub>8</sub>"



**61**  
CABINET SIZE: 14<sup>3</sup>/<sub>8</sub>"w x 39<sup>1</sup>/<sub>4</sub>"d x 38<sup>5</sup>/<sub>16</sub>"h  
Narrow Width: 11<sup>3</sup>/<sub>8</sub>"  
Weight: 102 lb  
COMPARTMENT SIZES: 12<sup>3</sup>/<sub>8</sub>"w x 37<sup>3</sup>/<sub>8</sub>"d x 14<sup>5</sup>/<sub>8</sub>"h  
Narrow Width: 9<sup>3</sup>/<sub>8</sub>"



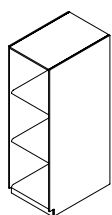
**73 (Adjustable Shelf)**  
CABINET SIZE: 27<sup>1</sup>/<sub>2</sub>"w x 39<sup>1</sup>/<sub>4</sub>"d x 85<sup>5</sup>/<sub>8</sub>"h  
Narrow Width: 21<sup>1</sup>/<sub>2</sub>"  
Weight: 383 lb  
COMPARTMENT SIZES: 12<sup>3</sup>/<sub>8</sub>"w x 37<sup>3</sup>/<sub>8</sub>"d  
Height Range: 7<sup>3</sup>/<sub>8</sub>" to 78<sup>1</sup>/<sub>8</sub>"  
Narrow Width: 9<sup>3</sup>/<sub>8</sub>"



**80 (Adjustable Shelf)**  
CABINET SIZE: 27<sup>1</sup>/<sub>2</sub>"w x 39<sup>1</sup>/<sub>4</sub>"d x 69<sup>3</sup>/<sub>4</sub>"h  
Narrow Width: 21<sup>1</sup>/<sub>2</sub>"  
Weight: 302 lb  
COMPARTMENT SIZES: 12<sup>3</sup>/<sub>8</sub>"w x 37<sup>3</sup>/<sub>8</sub>"d  
Height Range: 7<sup>1</sup>/<sub>8</sub>" to 62<sup>1</sup>/<sub>4</sub>"  
Narrow Width: 9<sup>3</sup>/<sub>8</sub>"

**NOTE:** when the shelves are adjusted, the cabinet will accommodate different instruments.

## BARITONE, EUPHONIUM, MELLOPHONE SPECS



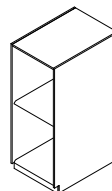
**11**

CABINET SIZE: 27 $\frac{1}{2}$ "w x 39 $\frac{1}{4}$ "d x 85 $\frac{5}{8}$ "h  
Narrow Width: 21 $\frac{1}{2}$ "  
Weight: 297 lb  
COMPARTMENT SIZES: 25 $\frac{1}{2}$ "w x 37 $\frac{3}{8}$ "d x 25"h  
Narrow Width: 19 $\frac{1}{2}$ "



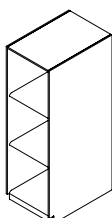
**50**

CABINET SIZE: 27 $\frac{1}{2}$ "w x 39 $\frac{1}{4}$ "d x 38 $\frac{5}{16}$ "h  
Narrow Width: 21 $\frac{1}{2}$ "  
Weight: 118 lb  
COMPARTMENT SIZE: 25 $\frac{1}{2}$ "w x 37 $\frac{3}{8}$ "d x 25"h  
Narrow Width: 19 $\frac{1}{2}$ "



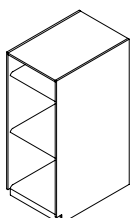
**66**

CABINET SIZE: 27 $\frac{1}{2}$ "w x 39 $\frac{1}{4}$ "d x 69 $\frac{3}{4}$ "h  
Narrow Width: 21 $\frac{1}{2}$ "  
Weight: 249 lb  
COMPARTMENT SIZE: 25 $\frac{1}{2}$ "w x 37 $\frac{3}{8}$ "d x 30 $\frac{3}{4}$ "h  
Narrow Width: 19 $\frac{1}{2}$ "



**75 (Adjustable Shelf)**

CABINET SIZE: 27 $\frac{1}{2}$ "w x 39 $\frac{1}{4}$ "d x 85 $\frac{5}{8}$ "h  
Narrow Width: 21 $\frac{1}{2}$ "  
Weight: 297 lb  
COMPARTMENT SIZES: 25 $\frac{1}{2}$ "w x 37 $\frac{3}{8}$ "d  
Height Range: 7" to 78 $\frac{1}{8}$ "  
Narrow Width: 19 $\frac{1}{2}$ "

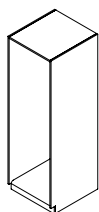


**82 (Adjustable Shelf)**

CABINET SIZE: 27 $\frac{1}{2}$ "w x 39 $\frac{1}{4}$ "d x 69 $\frac{3}{4}$ "h  
Narrow Width: 21 $\frac{1}{2}$ "  
Weight: 242 lb  
COMPARTMENT SIZES: 25 $\frac{1}{2}$ "w x 37 $\frac{3}{8}$ "d  
Height Range: 7 $\frac{5}{16}$ " to 62 $\frac{1}{4}$ "  
Narrow Width: 19 $\frac{1}{2}$ "

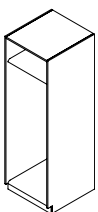
**NOTE:** when the shelves are adjusted, the cabinet will accommodate different instruments.

## GUITAR, STRING BASS, CELLO SPECS



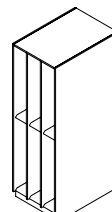
**8**

CABINET SIZE: 27 $\frac{1}{2}$ "w x 29 $\frac{1}{4}$ "d x 85 $\frac{5}{8}$ "h  
Narrow Width: 21 $\frac{1}{2}$ "  
Weight: 230 lb  
COMPARTMENT SIZE: 25 $\frac{1}{2}$ "w x 27 $\frac{3}{8}$ "d x 78 $\frac{1}{2}$ "h  
Narrow Width: 19 $\frac{1}{2}$ "



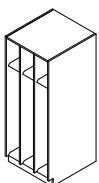
**9**

CABINET SIZE: 27 $\frac{1}{2}$ "w x 29 $\frac{1}{4}$ "d x 85 $\frac{5}{8}$ "h  
Narrow Width: 21 $\frac{1}{2}$ "  
Weight: 238 lb  
COMPARTMENT SIZES: 25 $\frac{1}{2}$ "w x 27 $\frac{3}{8}$ "d x 14 $\frac{5}{8}$ "h,  
25 $\frac{1}{2}$ "w x 27 $\frac{3}{8}$ "d x 61 $\frac{7}{8}$ "h  
Narrow Width: 19 $\frac{1}{2}$ "



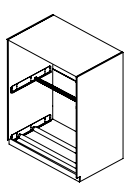
**19**

CABINET SIZE: 27 $\frac{1}{2}$ "w x 39 $\frac{1}{4}$ "d x 85 $\frac{5}{8}$ "h  
Weight: 340 lb  
COMPARTMENT SIZES: 8"w x 37 $\frac{3}{8}$ "d x 38 $\frac{1}{4}$ "h



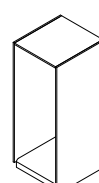
**29**

CABINET SIZE: 27 $\frac{1}{2}$ "w x 29 $\frac{1}{4}$ "d x 69 $\frac{3}{4}$ "h  
Weight: 265 lb  
COMPARTMENT SIZES: 8"w x 27 $\frac{3}{8}$ "d x 14 $\frac{5}{8}$ "h,  
8"w x 27 $\frac{3}{8}$ "d x 48 $\frac{1}{4}$ "h



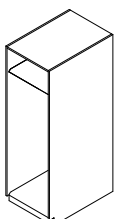
**42**

CABINET SIZE: 60 $\frac{1}{2}$ "w x 39 $\frac{1}{4}$ "d x 85 $\frac{5}{8}$ "h  
Weight: 424 lb  
COMPARTMENT SIZE: 58 $\frac{1}{2}$ "w x 37 $\frac{3}{8}$ "d x 81"h



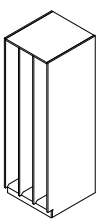
**30**

CABINET SIZE: 27 $\frac{1}{2}$ "w x 29 $\frac{1}{4}$ "d x 69 $\frac{3}{4}$ "h  
Narrow Width: 21 $\frac{1}{2}$ "  
Weight: 181 lb  
COMPARTMENT SIZE: 25 $\frac{1}{2}$ "w x 27 $\frac{3}{8}$ "d x 61 $\frac{7}{8}$ "h  
Narrow Width: 19 $\frac{1}{2}$ "



**45**

CABINET SIZE: 27 $\frac{1}{2}$ "w x 39 $\frac{1}{4}$ "d x 85 $\frac{5}{8}$ "h  
Narrow Width: 21 $\frac{1}{2}$ "  
Weight: 270 lb  
COMPARTMENT SIZES: 25 $\frac{1}{2}$ "w x 37 $\frac{3}{8}$ "d x 14 $\frac{5}{8}$ "h,  
25 $\frac{1}{2}$ "w x 37 $\frac{3}{8}$ "d x 61 $\frac{7}{8}$ "h  
Narrow Width: 19 $\frac{1}{2}$ "

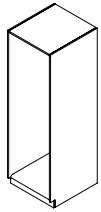


**46**

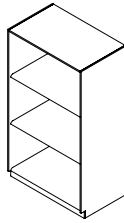
CABINET SIZE: 27 $\frac{1}{2}$ "w x 29 $\frac{1}{4}$ "d x 85 $\frac{5}{8}$ "h  
Weight: 308 lb  
COMPARTMENT SIZE: 8"w x 27 $\frac{3}{8}$ "d x 78 $\frac{1}{2}$ "h



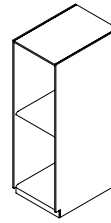
## PERCUSSION SPECS



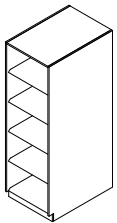
**8**  
CABINET SIZE: 27 $\frac{1}{2}$ "w x 29 $\frac{1}{4}$ "d x 85 $\frac{5}{8}$ "h  
Narrow Width: 21 $\frac{1}{2}$ "  
Weight: 230 lb  
COMPARTMENT SIZE: 25 $\frac{1}{2}$ "w x 27 $\frac{3}{8}$ "d x 78 $\frac{1}{2}$ "h  
Narrow Width: 19 $\frac{1}{2}$ "



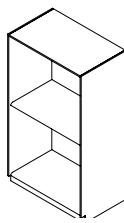
**12**  
CABINET SIZE: 48 $\frac{1}{2}$ "w x 29 $\frac{1}{4}$ "d x 85 $\frac{5}{8}$ "h  
Weight: 282 lb  
COMPARTMENT SIZES: 46 $\frac{1}{2}$ "w x 27 $\frac{3}{8}$ "d x 23 $\frac{3}{4}$ "h



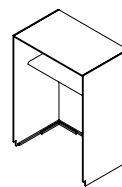
**14**  
CABINET SIZE: 27 $\frac{1}{2}$ "w x 39 $\frac{1}{4}$ "d x 85 $\frac{5}{8}$ "h  
Narrow Width: 21 $\frac{1}{2}$ "  
Weight: 288 lb  
COMPARTMENT SIZES: 25 $\frac{1}{2}$ "w x 37 $\frac{3}{8}$ "d x 37 $\frac{3}{8}$ "h  
Narrow Width: 19 $\frac{1}{2}$ "



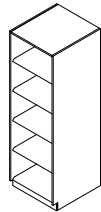
**43**  
CABINET SIZE: 27 $\frac{1}{2}$ "w x 39 $\frac{1}{4}$ "d x 85 $\frac{5}{8}$ "h  
Narrow Width: 21 $\frac{1}{2}$ "  
Weight: 303 lb  
COMPARTMENT SIZE: 25 $\frac{1}{2}$ "w x 37 $\frac{3}{8}$ "d x 14 $\frac{5}{8}$ "h  
Narrow Width: 19 $\frac{1}{2}$ "



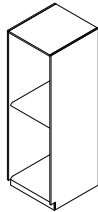
**15**  
CABINET SIZE: 48 $\frac{1}{2}$ "w x 29 $\frac{1}{4}$ "d x 85 $\frac{5}{8}$ "h  
Weight: 235 lb  
COMPARTMENT SIZES: 46 $\frac{1}{2}$ "w x 27 $\frac{3}{8}$ "d x 37"  
\*TUBAS CAN ALSO BE STORED



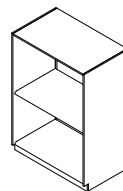
**17 (Adjustable Shelf)**  
CABINET SIZE: 60 $\frac{1}{2}$ "w x 39 $\frac{1}{4}$ "d x 85 $\frac{5}{8}$ "h  
Weight: 348 lb  
COMPARTMENT SIZES: 58 $\frac{1}{2}$ "w x 37 $\frac{3}{8}$ "d x 83 $\frac{1}{4}$ "h



**47**  
CABINET SIZE: 27 $\frac{1}{2}$ "w x 29 $\frac{1}{4}$ "d x 85 $\frac{5}{8}$ "h  
Narrow Width: 21 $\frac{1}{2}$ "  
Weight: 246 lb  
COMPARTMENT SIZE: 25 $\frac{1}{2}$ "w x 27 $\frac{3}{8}$ "d x 14 $\frac{5}{8}$ "h  
Narrow Width: 19 $\frac{1}{2}$ "

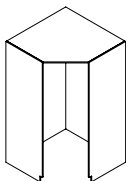


**44**  
CABINET SIZE: 27 $\frac{1}{2}$ "w x 29 $\frac{1}{4}$ "d x 85 $\frac{5}{8}$ "h  
Narrow Width: 21 $\frac{1}{2}$ "  
Weight: 242 lb  
COMPARTMENT SIZE: 25 $\frac{1}{2}$ "w x 27 $\frac{3}{8}$ "d x 37 $\frac{3}{8}$ "h  
Narrow Width: 19 $\frac{1}{2}$ "



**67**  
CABINET SIZE: 48 $\frac{1}{2}$ "w x 29 $\frac{1}{4}$ "d x 69 $\frac{3}{4}$ "h  
Weight: 206 lb  
COMPARTMENT SIZE: 46 $\frac{1}{2}$ "w x 27 $\frac{3}{8}$ "d x 30 $\frac{3}{4}$ "h

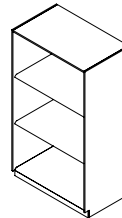
## GENERAL STORAGE SPECS



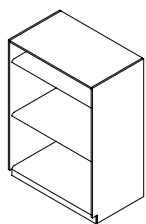
**41**  
CABINET SIZE: 48 $\frac{1}{4}$ "w x 48 $\frac{1}{4}$ "d x 85 $\frac{5}{8}$ "h  
Weight: 348 lb



**62**  
CABINET SIZE: 36"w x 29 $\frac{1}{4}$ "d x 38 $\frac{5}{16}$ "h  
Weight: 197 lb  
COMPARTMENT SIZE: 16 $\frac{3}{8}$ "w x 27 $\frac{3}{8}$ "d x 26 $\frac{1}{2}$ "h  
DRAWER SIZES: 15 $\frac{11}{16}$ "w x 19 $\frac{5}{8}$ "d x 4 $\frac{3}{8}$ "h



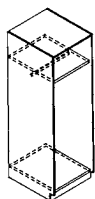
**76 (Adjustable Shelf)**  
CABINET SIZE: 48 $\frac{1}{2}$ "w x 29 $\frac{1}{4}$ "d x 85 $\frac{5}{8}$ "h  
Weight: 282 lb  
COMPARTMENT SIZES: 46 $\frac{1}{2}$ "w x 27 $\frac{3}{8}$ "d  
Height Range: 6 $\frac{7}{16}$ " to 76 $\frac{3}{8}$ "



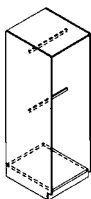
**83 (Adjustable Shelf)**  
CABINET SIZE: 48 $\frac{1}{2}$ "w x 29 $\frac{1}{4}$ "d x 69 $\frac{3}{4}$ "h  
Weight: 206 lb  
COMPARTMENT SIZES: 46 $\frac{1}{2}$ "w x 27 $\frac{3}{8}$ "d  
Height Range: 6 $\frac{7}{16}$ " to 60 $\frac{1}{2}$ "

**NOTE:** when the shelves are adjusted, the cabinet will accommodate different instruments.

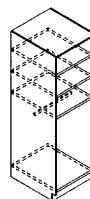
## ROBE AND UNIFORM SPECS



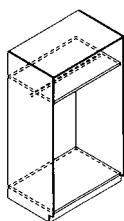
**31**  
CABINET SIZE: 27<sup>1</sup>/<sub>2</sub>"w x 29<sup>1</sup>/<sub>4</sub>"d x 85<sup>5</sup>/<sub>8</sub>"h  
Weight: 239 lb  
COMPARTMENT SIZE: 25<sup>1</sup>/<sub>2</sub>"w x 27<sup>3</sup>/<sub>8</sub>"d x 11<sup>1</sup>/<sub>4</sub>"h,  
25<sup>1</sup>/<sub>2</sub>"w x 27<sup>3</sup>/<sub>8</sub>"d x 65<sup>5</sup>/<sub>8</sub>"h



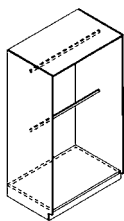
**32**  
CABINET SIZE: 27<sup>1</sup>/<sub>2</sub>"w x 29<sup>1</sup>/<sub>4</sub>"d x 85<sup>5</sup>/<sub>8</sub>"h  
Weight: 233 lb  
COMPARTMENT SIZE: 25<sup>1</sup>/<sub>2</sub>"w x 27<sup>3</sup>/<sub>8</sub>"d x 77<sup>1</sup>/<sub>8</sub>"h



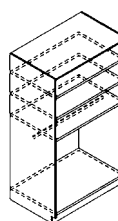
**33**  
CABINET SIZE: 27<sup>1</sup>/<sub>2</sub>"w x 29<sup>1</sup>/<sub>4</sub>"d x 85<sup>5</sup>/<sub>8</sub>"h  
Weight: 252 lb  
COMPARTMENT SIZE: 25<sup>1</sup>/<sub>2</sub>"w x 27<sup>3</sup>/<sub>8</sub>"d x 11<sup>1</sup>/<sub>4</sub>"h,  
25<sup>1</sup>/<sub>2</sub>"w x 27<sup>3</sup>/<sub>8</sub>"d x 39<sup>5</sup>/<sub>8</sub>"d



**34**  
CABINET SIZE: 48<sup>1</sup>/<sub>2</sub>"w x 29<sup>1</sup>/<sub>4</sub>"d x 85<sup>5</sup>/<sub>8</sub>"h  
Weight: 454 lb  
COMPARTMENT SIZE: 46<sup>1</sup>/<sub>2</sub>"w x 27<sup>3</sup>/<sub>8</sub>"d x 10<sup>1</sup>/<sub>4</sub>"h,  
46<sup>1</sup>/<sub>2</sub>"w x 27<sup>3</sup>/<sub>8</sub>"d x 63<sup>5</sup>/<sub>8</sub>"h

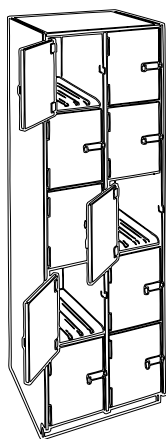


**35**  
CABINET SIZE: 48<sup>1</sup>/<sub>2</sub>"w x 29<sup>1</sup>/<sub>4</sub>"d x 85<sup>5</sup>/<sub>8</sub>"h  
Weight: 445 lb  
COMPARTMENT SIZE: 46<sup>1</sup>/<sub>2</sub>"w x 27<sup>3</sup>/<sub>8</sub>"d x 76<sup>1</sup>/<sub>2</sub>"h

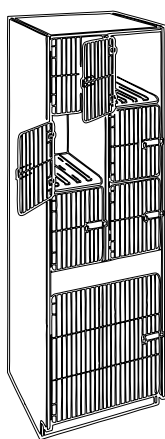


**36**  
CABINET SIZE: 48<sup>1</sup>/<sub>2</sub>"w x 29<sup>1</sup>/<sub>4</sub>"d x 85<sup>5</sup>/<sub>8</sub>"h  
Weight: 479 lb  
COMPARTMENT SIZE: 46<sup>1</sup>/<sub>2</sub>"w x 27<sup>3</sup>/<sub>8</sub>"d x 10<sup>1</sup>/<sub>4</sub>"h,  
46<sup>1</sup>/<sub>2</sub>"w x 27<sup>3</sup>/<sub>8</sub>"d x 38<sup>5</sup>/<sub>8</sub>"h

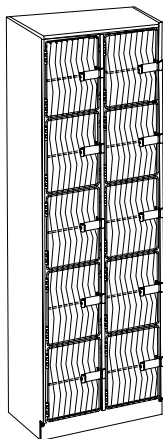
## CABINET DOOR OPTIONS



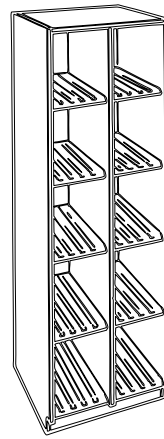
**4** with wood  
compartment doors



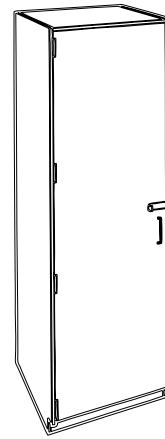
**6** with straight grille  
compartment doors



**4** with waterfall grille  
compartment doors  
(upcharge applies)



**4** without doors



**4** with full wood door  
(Not all cabinets are available  
with full wood door)

**NOTE:** Doors must be included at the time of ordering as they can not be installed later.  
Adjustable shelf cabinets have a full door.

## INSTRUMENT RACKS

Feel secure when storing and transporting your instruments with Wenger's mobile instrument racks. Smooth rolling design for easy transport through doorways and between performance areas.

- Finish is polyester laminate in Wenger standard colors
- Racks have four swivel casters (two locking) for easy transport
- Closed ends for extra protection
- Lower cross supports have flexible PVC edging to protect instruments
- GREENGUARD Certified

### INSTRUMENT RACK COLORS



Wenger  
Maple



Pebble



Oyster



Cherry



Evening  
Tigris



Fusion  
Maple



Solar Oak

## STRING BASS RACK

- Spacing for uncased instruments half-size and up
- Brass hooks for bow storage
- Racks have 2½" swivel casters with front locking casters
- 3-Unit measures 61"w x 26"d x 61"h | 4-Unit measures 81⅞"w x 26"d x 61"h



## CELLO RACK

- Spacing for uncased instruments half-size and up
- Brass hooks for bow storage
- Racks have 2½" swivel casters with front locking casters
- 4-Unit measures 49⅜"w x 24"d x 47½"h | 6-Unit measures 73⅞"w x 24"d x 47½"h



### MODEL NUMBER

### PRODUCT

148J003

3-unit string Bass Rack

148J004

4-unit string Bass Rack

148J001

4-unit Cello Rack

148J002

6-unit Cello Rack

## VIOLIN/VIOLA RACK

- Single rack accommodates 16 instruments
- Holds cased instruments  $\frac{1}{2}$  size and up,  $\frac{1}{4}$  and  $\frac{1}{8}$  size cellos
- Racks have  $2\frac{1}{2}$ " swivel casters with front locking casters
- Rack measures 61"w x 33"d x 50 $\frac{3}{4}$ "h



### MODEL NUMBER

148J005

### PRODUCT

16-unit Violin/ Viola Rack

## GUITAR RACK

- Provides protection for acoustic and electric guitars, cased and uncased, three-quarter and full-size and guitarrons
- Adjustable-height upper cross supports and yokes
- Optimal security cables help prevent theft using standard padlock (padlocks not included)
- Rack measures 69 $\frac{3}{16}$ "w x 29 $\frac{1}{2}$ "d x 72"h



### MODEL NUMBER

148J006

148J329

### PRODUCT

Mobile Guitar Storage Rack

Security Cable (10 pack)

## TUBA/SOUSAPHONE MOBILE STORAGE RACK

- 3-Unit measures 73 $\frac{1}{8}$ "w x 32 $\frac{3}{4}$ "d x 44"h
- 4-Unit measures 97"w x 32 $\frac{3}{4}$ "d x 44"h
- Units are adjustable to configure for multiple sizes of tubas and sousaphones
- Padded steel cradles adjust right and left to protect and hold instruments securely
- GREENGUARD Certified



### MODEL NUMBER

148J007

148J008

### PRODUCT

3-Unit Mobile Storage Rack

4-Unit Mobile Storage Rack



## PERCUSSION WORKSTATION

Perfect for classroom use, Percussion Workstation lets you store everything from triangles to suspended cymbals. With a sturdy design that is built on wheels, the Percussion Workstation can be rolled into place and ready for play in an instant.

- A place for percussionists to organize and keep track of small instruments
- Moving across the classroom or down the hall to the auditorium is easy with the Percussion Workstation’s smooth-rolling casters
- Lockable cabinet doors to secure your instruments and equipment
- Large, practical work surface measures 48" w x 24" d
- Padded top silences instruments not in use
- Four heavy-duty casters glide over any surface and provide great stability
- Four foam-lined drawers store triangles, sand blocks, brushes, drumsticks, mallets, tambourines, maracas and other small items
- Shelves hold the largest standard-size cymbals
- Measures 48½" w x 24½" d x 36½" h
- GREENGUARD Certified



### ACCESSORIES



Pop-Up Music Desk



Cymbal Cradle



Suspended Cymbal Holder

### COLORS



Wenger Maple



Pebble



Oyster



Cherry



Evening Tigris



Fusion Maple



Solar Oak

MODEL NUMBER	PRODUCT
147G002	Basic Percussion Workstation
147G001	Deluxe Percussion Workstation with all accessories
147H012	Cymbal Cradle
147H014	Suspended Cymbal Holder
147H510	Pop-Up Music Desk

## GEARBOSS® SHELVING

GearBoss Shelving offers rugged, adjustable metal shelving that is perfect for storing your equipment. A versatile system that can be configured to your specific needs, the cantilever design maximizes both overhead and floor space.

- Great for music equipment, theater costume and prop storage
- Configure your optimal storage space by adding shelves, workspace desks, drawers, locking cabinets and hanger rods
- Cantilever design has fewer supports to give you extra space and make cleaning easier
- Adjust shelves in 1" increments without tools
- Each bay is load-rated at 1,000 lb
- Easy to install and relocate
- Available in 4'w x 8'h bays
- Silver powder-coat paint finish
- GREENGUARD Certified



Three bays shown



### CONFIGURATIONS

GearBoss® Shelving comes in a wide variety of configurations. Call your Wenger representative for the best solution and budget estimate for your program.

## MUSIC LIBRARY SYSTEM

Store your library in half the space with Wenger’s Music Library System. Built for maximum organization with the minimal amount of wall space. Our patented high-density rollout design keeps your sheet music clean, crisp and easy to find.

- Designed to accommodate most music filing boxes, end-tab file folders and envelopes
- Shelves feature a protective polyester laminate and are reinforced with an aluminum extrusion to prevent sagging
- Available in six or seven shelf units
- Available in standard or oversized width shelves
- Interior shelves and base are Oyster
- GreenGuard Certified

### ACCESSORIES



Four units shown



Adjustable shelves allow you to conveniently store sheet music for choral, instrumental, choral octavos and marching band - even lesson books and compilations - all in the same easy to use unit.



Before

An average-size music program needs as many as 10 four-drawer file cabinets — that take up 13½' feet of wall space — just to accommodate 1,000 titles.



After

But Wenger’s slide-out-shelf design lets you store those same 1,000 titles in a 4-unit system that takes up only 5'8" of wall space.

MODEL NUMBER	PRODUCT
173G600	6-Shelf Unit - Standard width
173G600	6-Shelf Unit - Oversized width
173G010	6-Shelf End Cover
173G700	7-Shelf Unit - Standard width
173G700	7-Shelf Unit - Oversized width
173G011	7-Shelf End Cover
173G012	Optional Top Closure Kit (Per Unit)
173E245	Lock Kit
173E240	4-Pack Lock Kit

## MUSIC SORTING RACK

With 46 labelled slots, you can distribute and collect individual parts more quickly and store this semester's full sets and scores within easy reach. Strong, stable design that rolls easily from your music library to your rehearsal room.

- Durable, smooth-rolling swivel casters let you take your sheet music anywhere
- Identifies 46 slots by instrument for easy organization
- Slots measure 1"w x 10½"d and 9"h
- Rack measures 49⅝"w x 25¼"d x 35⅞"h



### MUSIC STORAGE COLORS



Wenger  
Maple



Pebble



Oyster



Cherry



Evening  
Tigris



Fusion  
Maple



Solar Oak

#### MODEL NUMBER

173E050

#### PRODUCT

Music Sorting Rack

Music Sorting Rack with Doors





## TALL FOLIO CABINETS

Tall Folio Cabinets neatly store up to 100 folios for your orchestra, band or choir in a single unit. Keep your folios right where they belong in a sturdy, durable cabinet.

- High-density design saves space in your classroom
- Number strips are included to keep contents organized and easily accessed
- Keeps sheet music clean, crisp, readable and findable
- Sturdy construction with polyester laminate for added strength
- Shelf spacing is adjustable in  $\frac{1}{2}$ " increments from 1" to 3" spacing intervals
- Consult with your Wenger representative about capacity (varies with shelf spacing and unit size)
- GREENGUARD Certified



### SHELF SPACING CAPACITY

SHELF SPACING	1"	1½"	2"	2½"	3"
SHELVES PER CABINET	144	96	72	56	48

### FOLIO CABINET COLORS



Wenger  
Maple



Pebble



Oyster



Cherry



Evening  
Tigris



Fusion  
Maple



Solar Oak

### MODEL NUMBER

146M052

### PRODUCT

Tall Band/Orchestra Folio Cabinet  
With or without doors  
(doors cannot be added later)

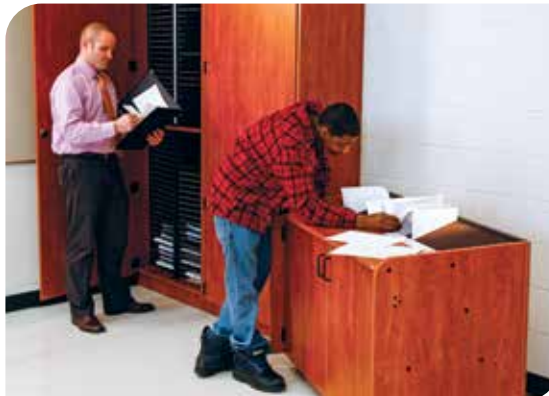
### SIZE

32 $\frac{13}{32}$ "w x 19 $\frac{1}{4}$ "d x 84 $\frac{1}{4}$ "h

146M012

Tall Choral Folio Cabinet  
With or without doors  
(doors cannot be added later)

26 $\frac{11}{16}$ "w x 19 $\frac{1}{4}$ "d x 84 $\frac{1}{4}$ "h



## MOBILE FOLIO CABINETS

Built with the same quality design as the Tall Folio Cabinets, our Mobile Folio Cabinets are a great way to move your folios from one room to the next while keeping them neatly organized.

- High-density design saves space in your classroom
- Number strips are included to keep contents organized and easily accessed
- Keeps sheet music clean, crisp, readable and findable
- Sturdy construction with polyester laminate for added strength
- Shelf spacing is adjustable in  $\frac{1}{2}$ " increments from 1" to 3" spacing intervals
- Smooth-rolling swivel casters for easy transport
- Consult with your Wenger representative about capacity
- (varies with shelf spacing and unit size)
- GREENGUARD Certified



### SHELF SPACING CAPACITY

SHELF SPACING	1"	1½"	2"	2½"	3"
SHELVES PER CABINET					
2-COLUMN CHORAL	84	56	42	34	28
3-COLUMN CHORAL	126	84	63	51	42
4-COLUMN CHORAL	168	112	84	68	56
2-COLUMN BAND/ORCHESTRA	84	56	42	34	28
3-COLUMN BAND/ORCHESTRA	126	84	63	51	42

MODEL NUMBER	PRODUCT	SIZE
146M032	Two-Column Mobile Band/Orchestra Folio Cabinet With or without doors <b>(doors cannot be added later)</b>	32 <sup>7</sup> / <sub>16</sub> "w x 17 <sup>5</sup> / <sub>8</sub> "d x 50 <sup>7</sup> / <sub>8</sub> "h
146M033	Three-Column Mobile Band/Orchestra Folio Cabinet With or without doors <b>(doors cannot be added later)</b>	47 <sup>3</sup> / <sub>4</sub> "w x 17 <sup>5</sup> / <sub>8</sub> "d x 50 <sup>7</sup> / <sub>8</sub> "h
146M022	Two-Column Mobile Choral Folio Cabinet With or without doors <b>(doors cannot be added later)</b>	26 <sup>3</sup> / <sub>4</sub> "w x 17 <sup>5</sup> / <sub>8</sub> "d x 50 <sup>7</sup> / <sub>8</sub> "h
146M023	Three-Column Mobile Choral Folio Cabinet With or without doors <b>(doors cannot be added later)</b>	39 <sup>7</sup> / <sub>16</sub> "w x 17 <sup>5</sup> / <sub>8</sub> "d x 50 <sup>7</sup> / <sub>8</sub> "h
146M024	Four-Column Mobile Choral Folio Cabinet With or without doors <b>(doors cannot be added later)</b>	51 <sup>3</sup> / <sub>4</sub> "w x 17 <sup>5</sup> / <sub>8</sub> "d x 50 <sup>7</sup> / <sub>8</sub> "h







Wenger®

# MOBILE STORAGE

Your equipment deserves to be transported with care in durable, spacious and easy-to-use mobile storage carts. Whether it's for the marching band or the football team, Wenger offers rugged, user-friendly mobile storage for equipment, uniforms and instruments. We focus on the safety and security of your gear so you can focus on the day.

\* Product color samples can be provided upon request







## GEARBOSS® HIGH-DENSITY STORAGE

Engineered for maximum flexibility, GearBoss high-density storage carts give you a customizable, spacious storage system for music, athletic, or theater equipment and uniforms. There is nothing a combination of our different storage carts can't handle, and your Wenger representative can design the best arrangement for you.



### CONFIGURATIONS

GearBoss® High-Density Storage Carts come in a wide variety of configurations. Call your Wenger representative for the best solution and budget estimate for your program.

## GEARBOSS® X-CART™

- X-Cart is available in two sizes and measures 32" or 48"w x 78"d x 79"h
- Roller guides follow the track keeping the units aligned
- Rugged construction with welded chassis and steel wire grille end frames
- Heavy-duty 8" wheels allow the cart to roll smoothly on the track
- Durable powder-coat paint finish
- Wire grille ends come in a variety of colors to match your program colors

### ACCESSORIES



Doors



Shelves



Garment Bars



Hangers



Attic Units



Track



Stackers



## GEARBOSS® TEAM CART™

- Team Cart is available in two sizes and measures 32" or 48"w x 78"d x 79"h
- Roller guides follow the track keeping the units aligned – but are retractable for when you need to remove the cart from the track
- Rugged construction with welded chassis and steel wire grille end frames
- Heavy-duty 6" swivel casters make transportation easy
- Durable powder-coat paint finish
- Wire grille ends come in a variety of colors to match your program colors

### ACCESSORIES



Doors



Shelves



Garment Bars



Hangers



Attic Units



Track



Stackers





# MOBILE STORAGE

## GEARBOSS® SPORTCART™

Built with the same features as the Team Cart and just as solid, the SportCart is a smaller storage unit that easily navigates small hallways, short doorways, and most elevators. Take your equipment wherever you need with ease.

- SportCart measures 32"w x 41¾"d x 73"h
- Extra-wide heavy-duty 5" swivel casters for easy moving on hard surfaces such as concrete, gym floors, tile and commercial grade carpet
- Durable powder-coat paint finish
- Wire grille ends come in a variety of colors to match your program colors



### ACCESSORIES



Doors



Shelves and  
Garment Bars

## GEARBOSS® WORKSTATION

The GearBoss Workstation is a two-in-one storage and workstation that is perfect for folding uniforms, storing gear and more. At 42" tall, with a laminate surface, the Workstation is as durable as it is portable.

- Workstation measures 32"w x 78"d x 42"h
- Laminate surface is 1" thick
- Roller guides included for use on the X-Cart track if desired
- Rugged construction with welded chassis and steel wire grille end frames
- Heavy-duty 6" swivel casters make transportation easy
- Durable powder-coat paint finish
- Wire grille ends come in a variety of colors to match your program colors



### ACCESSORIES



Doors



Shelves and  
Garment Bars



## ONBOARD® CARGO CART

Made for moving garments or gear, the OnBoard Cargo Cart is the rugged answer to storage. Sturdy enough to carry uniforms and equipment, sleek enough to fit through standard doorways; this cart is the ultimate in mobile transportation.

- Cargo Cart measures 72½"w x 31½"d x 70½"h
- Fits through standard 3' doorways
- Available with two locking and two fixed heavy-duty solid rubber casters or pneumatic wheels that maneuver easily on hard or soft surfaces
- Equipped with removable full-length garment bar and 40 hanger retainer clips to lock uniforms in place
- Bottom shelf constructed of 16-gauge steel with black powder-coat paint finish
- Top of garment bar to top of bottom shelf is 5'1½"
- GreenGuard Certified



### ACCESSORIES



Shelves



Hanger  
Retainer  
Clips



Protective Cover

#### MODEL NUMBER

#### PRODUCT

210A003	OnBoard Cargo Cart with hard casters
210A004	OnBoard Cargo Cart with pneumatic wheels
210A002	Adjustable Shelf
210B230	Hanger Retainer Clip (Bag of 40)
210A220	Protective Cover





## RACK ‘N ROLL® GARMENT RACK

The easy way to move your uniforms, costumes and props from storage to rehearsal or performance. The Rack ‘n Roll® Garment Rack is heavy-duty enough to hold a full wardrobe but designed so efficiently it can easily roll through standard doorways or elevators.

- Durable steel bottom and top shelves
- Black powder-coat paint finish
- Two all-swivel and two rigid non-marking casters for easy maneuvering
- Basket organizes smaller items and folds flat when not in use (included)
- Fits through standard 32" doorways
- Cart available in 4' and 6' widths
- GreenGuard Certified



### ACCESSORIES



Baskets



Privacy Screen



Protective Cover



Hanger Retainer  
Clips



Costume  
Dividers

MODEL NUMBER	PRODUCT
028B001	4' Rack ‘n Roll
028B002	6' Rack ‘n Roll
210B230	Hanger Retainer Clip (Bag of 40)
028B007	Additional Basket
028B013	Costume Dividers (pack of 25)
028B014	4' Dust cover
028B015	6' Dust cover
028B016	Privacy Screen (two Rack ‘n Rolls needed to use)

## ONBOARD® UNIFORM CART

Made for marching bands on the go, the OnBoard Uniform Cart is a convenient way to safely transport marching band uniforms. A single cart holds up to 24 uniforms and easily fits in coach bus storage compartments.

- Lightweight design for movement and lifting by two people
- 250 lb load capacity
- Hanger arms include space for label on end cap and includes 28 hanger retainer clips
- Durable ABS construction with built-in slide rails on back of cart
- Cart measures 48"w x 23"d x 45"h
- All-swivel, non-marring solid polypropylene 4" diameter casters provide easy maneuverability
- Fits through standard 32" doorways
- GreenGuard Certified



MODEL NUMBER	PRODUCT
210A007	OnBoard Uniform Cart
210A012	OnBoard Uniform Cart (package of 2)

## GEARBOSS® MOBILE KIOSK

Whether you're selling t-shirts or travel mugs, the Mobile Kiosk is the go-to sales cart in the gym, on the field, at concerts and community events. Able to be set up in minutes and roll over grass and hard surfaces with ease, the secure Mobile Kiosk will push your revenue generation to the next level.

- Pulls easily through doors and hallways with a handle that doubles as a hand brake for safe mobility
- 10" pneumatic wheels for easy rolling
- 42" counter height
- Retractable legs for additional stability outdoors
- Sliding lock bar secures contents with a single padlock
- Kiosk measures 72"w x 31"d x 77"h
- Includes eight bins, one wire basket, two clothing waterfalls and eighteen hooks



### ACCESSORIES



Electric Kit: Ceiling track lights (2' track with two lights) and seven-outlet plug strip

MODEL NUMBER	PRODUCT
240A007	Mobile Kiosk
240B676	Electric Kit

## GEARBOSS® TRANSPORT CART

From equipment transport to table in mere seconds, the TranSport Cart is a rock-solid product that serves all your needs. This hand-pulled, two-in-one cart holds up to 1,000 lb and converts to a sturdy table with ease. With that much versatility, you will never stop finding new uses for the TranSport Cart.

- 10" pneumatic wheels for easy rolling over many different surfaces
- Comfort-grip pull handle
- Strong, aluminum deck finished in UV, chemical-resistant powder-coat paint
- Converts to a table for use as a work surface
- TranSport Cart surface measures 30"w x 66"d and is 71<sup>3⁄8</sup>" total length
- Dynamic maximum load rating 1,000 lb
- Can be towed by a slow-moving motorized vehicle



### ACCESSORIES



Mesh Cart Wrap

MODEL NUMBER	PRODUCT
240A003	TranSport Cart
240A346	TranSport Cart Mesh Wrap



## ONBOARD® PODIUMS

Wenger has perfected a line of drum major podiums to offer solutions that are both sturdy and portable. The OnBoard Field Podium and Auxiliary Podium are both easy to transport and can be unfolded and ready to use in less than 30 seconds. It's the perfect solution that provides safety and efficiency.

### ONBOARD® FIELD PODIUM

- Breakthrough design sets up in less than 30 seconds with two people
- 72" high platform lets a drum major see and be seen
- Ladder steps on each end and removable safety rails on top
- Four large-diameter, rubber wheels and tow bar make transportation onto the field easy
- Sturdy deck with excellent traction and long-life durability
- Unique combination of black, powder-coat painted steel and aluminum for a striking appearance and maximum durability
- Includes two gas assists to minimize lifting effort
- Folds compactly and will fit on most trailers and trucks
- Field Podium measures 46¼"w x 96"d x 110"h with rail,
- 46¼"w x 96"d x 72"h without rail and
- 46¼"w x 96"d x 21½"h in the stored position



#### MODEL NUMBER

210C018

#### PRODUCT

OnBoard Field Podium

### ONBOARD® AUXILIARY PODIUM

- Breakthrough design sets up in less than 30 seconds by one person
- 42" high platform lets a drum major see and be seen
- Ladder steps on the back and a safety rail on top
- Two rubber wheels make transportation onto the field easy
- Sturdy deck with excellent traction and long-life durability
- Unique combination of black, powder-coat painted steel and aluminum for a striking appearance and maximum durability
- Simple design folds compactly and rolls from storage to performance position
- Auxiliary Podium measures 32"w x 72"d x 80"h with rail, 32"w x 72"d x 42"h without rail and 32"w x 54"d x 8"h in the stored position



#### MODEL NUMBER

210C019

#### PRODUCT

OnBoard Auxiliary Podium



## ONBOARD® CARTS

Our line of percussion carts accommodate almost any percussion instrument imaginable for both outdoor and indoor performances. The OnBoard Timpani Cart fits all sizes of timpani and converts from towing position into a performance platform in four easy steps. The Percussion Cart and Bass Drum/Gong Cart make it easier than ever to move on and off the field.

### ONBOARD® TIMPANI CART

- Fits all five sizes of pedal-style timpani — 20", 23", 26", 29" and 32" diameter
- Stabilizer bars allow cart to remain steady on uneven surfaces
- Carts can separate and be used individually
- Fold-down player platform quickly locks into performance position
- Tie-down rings allow timpani to be secured in place
- Can be easily pulled onto the field with drums in place
- Metal tow bar
- Holds up to four drums
- Each cart includes four 10" diameter pneumatic wheels
- Load capacity: 200 lb evenly distributed per cart
- Cart measures 34½"w x 149"d in the towing position and 90"w x 90"d in the performance position
- GREENGUARD Certified



### ONBOARD® PERCUSSION CART

- Designed to hold a wide selection of small percussion instruments at arm's reach
- 150 lb load capacity
- Includes four accessory mounts with clamps to attach instruments to bar, metal tow bar and storage pockets for mallets, sticks, etc.
- Pneumatic wheels for easy mobility on soft surfaces
- Cart measures 72¼"w x 31"d x 49½"h
- Fits through standard 3' doorway
- GREENGUARD Certified



### ONBOARD® BASS DRUM/GONG CART

- Elastic suspension system designed to easily hold the weight of a large bass drum or gong up to 40" diameter
- Drum tilts in 15-degree increments
- Two rigid and two swivel pneumatic wheels
- Includes storage pockets for mallets and metal tow bar
- Black powder-coat paint finish
- Cart measures 25½"w x 64"d x 57½"h
- GREENGUARD Certified



MODEL NUMBER	PRODUCT
210B016	OnBoard Timpani Cart
210C006	OnBoard Percussion Cart
210B013	OnBoard Bass Drum/Gong Cart

## ONBOARD® KEYBOARD CART

The OnBoard Keyboard Cart makes it easier than ever to store, transport and perform with your keyboard – all on the same cart. The cart's pneumatic tires roll over grass, hard surfaces, thresholds and cords with ease.

- Top shelf accommodates 88-key keyboard length and width
- Designed to prevent keyboard from sliding around during transport
- Bottom shelf supports amplifier, graphic equalizer, speakers and other electronic equipment
- 300 lb load capacity
- Cord wrap for power cables and metal tow bar included
- Adjustable to proper playing height 41" - 44"
- Fits through standard 32" doorways
- Rolls easily on grass with heavy-duty pneumatic tires
- Accommodates speaker dimensions up to 22"w x 16½"d x 30"h and 75 lb
- Built to withstand limited exposure to outdoor elements
- Cart measures 68½"w x 31"d x 41"h
- GREENGUARD Certified



### ACCESSORIES



Shelf Extensions

MODEL NUMBER	PRODUCT
210C005	OnBoard Keyboard Cart
210A008	Shelf Extensions (package of 2)

## ONBOARD® SPEAKER CART

Your days of struggling to transport heavy speakers are over with the OnBoard Speaker Cart. Built with pneumatic tires for easy movement over grass, hard surfaces, thresholds and cords, the OnBoard Speaker Cart can securely transport even your heaviest speakers.

- Designed to move heavy-duty speakers up to 24"w x 14"d
- Cart tilts speakers into performance positions – 0, 15, 30 and 45-degrees
- Black powder-coat paint finish
- Metal tow bar included
- Rolls easily on soft surfaces with two rigid and two swivel pneumatic tires
- Fits through a standard 32" doorways
- Cart measures 25½"w x 39"d x 27"h
- GREENGUARD Certified



### ACCESSORIES

Accessory tray is available to hold and store battery packs.



Accessory Tray

MODEL NUMBER	PRODUCT
210A017	OnBoard Speaker Cart (package of 2)
210A015	Accessory Tray





# ACOUSTIC SOLUTIONS

Wenger is a pioneer of acoustical equipment for music spaces, with innovative solutions that improve the learning environment and inspire great performances. Whether you are looking for traditional treatments or cutting-edge virtual technology, Wenger has a variety of solutions to meet your acoustic needs.

\* Product color samples can be provided upon request





# ACOUSTIC SOLUTIONS

## WENGER VAE®

Virtual Acoustic Environments uses highly advanced technology to simulate the acoustics of nine different performance spaces at the touch of a button. The VAE system can be installed in any music space, from a small music studio to a large rehearsal room. Built-in features such as record/playback make this technology a powerful tool in the music classroom.

**Multipurpose Room Acoustics** Adjust the acoustic environment and volume level to meet the needs of your music programs. Soloist? Turn the room acoustics up for support. Percussion section? Turn the room acoustics down for clarity and safety.

**Nine Performance Environments** VAE offers a broad range of performance environments, ranging from a small ensemble room to a cathedral and large sports arena.

**Accelerate Learning** Supportive room acoustics help students learn to listen and facilitate the development of pitch, tone and overall sense of ensemble.

**Record and Playback** Get immediate feedback with high quality recordings and immersive playback; a great tool for assessments and ensemble work.

**Upload and Download** Upload an accompaniment or take an ensemble recording home to practice with.

Presets for 9 distinct virtual acoustical environments:

- Practice Room
- Baroque Room
- Medium Recital Hall
- Large Recital Hall
- Small Auditorium
- Medium Auditorium
- Large Auditorium
- Cathedral
- Arena

\* Mini stereo output jack  
for real-time recording

\* Connection for optional  
foot controller that allows  
for hands-free operation



Capable of record and playback of nine  
sessions for up to two hours of total length

\* USB Type-B connection for uploading  
and downloading recorded tracks

\* VAE Practice and Studio only

## CONFIGURATIONS

Whether part of a larger renovation or an addition into an existing classroom, our experienced team makes the VAE design and installation as seamless as possible. Call your Wenger representative for a consultation today.

## VAE® REHEARSAL SYSTEM

Wenger's VAE technology transforms the acoustics in your rehearsal space to meet the needs of any size ensemble or music style. VAE Rehearsal optimizes balance and blend in the classroom, allowing each member of your ensemble to hear themselves and other sections more clearly.

**Flexible Acoustics** Take complete control of the sound level and acoustic signature of your rehearsal space. Adapt your classroom to meet the needs of each ensemble and musical style.

**Custom Preset** Wenger's acoustic engineers can map the acoustic environment of your performance venue and custom program it into the VAE Rehearsal system, taking your rehearsals to the next level.

**Critical Listening** Develop listening skills and adapt to performing as an ensemble in a variety of spaces.

**Record and Playback** VAE Rehearsal uses high quality microphones and loudspeakers for an accurate recording and immersive surround sound playback experience.

**Seamless Integration** Each VAE Rehearsal System is individually designed to meet the unique needs of your rehearsal space and music program.



## STUDIO VAE®

Studio VAE is an ideal package for any small practice or studio room, converting what are traditionally small spaces that are not ideal for music into so much more. Able to install into any room less than 200 square feet with ease, Studio VAE is a great option for both teachers and students.

### INCLUDES

- VAE digital processor & control panel
- Four speakers
- Two microphone wall panels
- All cables and speaker wire for complete installation





# ACOUSTIC SOLUTIONS

## SOUNDLOK® SOUND-ISOLATION ROOMS

Great sound isolation is difficult to design and even more challenging to build. For over 50 years, Wenger's SoundLok rooms have been providing excellent sound isolation in a wide variety of music education programs worldwide. Due to their modular format, SoundLok rooms can be relocated or resized as your music program grows.

- Wenger guarantees the sound isolation with the highest rating in the industry, making each room 25% quieter than similar rooms on the market
- The correct amount of absorption and diffusion is built-in for the best possible environment for music practice
- VAE technology (optional) allows musicians to practice in the acoustics of different performance spaces, make professional quality recordings and play along with accompaniments through a built-in, fully immersive surround sound system
- An independent cost study shows that the Wenger SoundLok room costs 10% less on average when compared to a properly constructed stick-built practice room
- Clean, professional 4" thick steel wall and ceiling panels are filled with high-grade acoustical insulation
- Rails, channels, and corner pieces interlock panels at the floor and ceiling with double-seated gasketed seams
- Glass door and window panels (optional) allow for easy monitoring, personal security, and inviting ambiance.
- Connect directly to building HVAC (or optional fan ventilation system) for quiet and efficient air exchange
- Dimmable LED lighting for lower power consumption
- Room heights (interior) available in 6" increments from 7'6" - 10'
- Door options: 3' standard; 4' door for large instruments; double door for grand piano
- GREENGUARD Certified



### CONFIGURATIONS

SoundLok Sound-Isolation Rooms come in a wide variety of configurations.

Call your Wenger representative for the best solution and budget estimate for your program.

### ACCESSORIES

- Horizontal broadcast application window and vertical window panels
- Horizontal and vertical closure panels to create a complete, built-in look for side-by-side installations
- Extra-capacity raceway for communications and network cabling
- Floating floor (inset in room) provides impact noise reduction for percussion rooms
- Optional computer shelf provides a useful workspace.

Sleek, low-profile LED lights provide better lighting and reduce shadows.

The door has an impressive acoustical STC rating.



Ceiling trim provides a continuous profile design and matches wall and ceiling colors.



VAE Technology



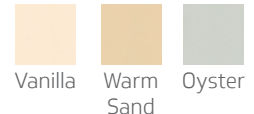
Optional computer shelf folds closed and locks when not in use.

### COLORS

#### DOOR AND FLOOR RAIL



#### WALL & CEILING PANEL





## PRE-ENGINEERED ACOUSTICAL DOORS

We've heard too many horror stories about poorly fitting doors and inadequate sound isolation. That's why Wenger engineers and acoustical experts have created an acoustical door that provides superior sound isolation. We've created an advanced split-frame design that accommodates virtually any wall thickness so every Wenger acoustical door fits perfectly. After all, even a small gap or imperfection can create enormous acoustical problems. Because our doors are pre-engineered, you'll be assured a high-integrity installation.

**Superior Sound Isolation** – Every door is pre-engineered to make it easy to install and to provide minimum sound leakage, rather than relying on a contractor to assemble a “door kit.”

**Continuous Cam-Lift Hinge** – A continuous cam-lift hinge eliminates pinch points and provides a solid seal at the bottom of the door for maximum sound isolation.

**Teflon®-Coated Sweep Seal** – Allows door to close easier with stainless steel sill plate and creates a tight seal for maximum sound isolation.

- Minimizes sound leakage outside of room to surrounding environments
- Most doors with one-hour UL® fire rating
- Durable, maintenance-free hinges up to 100,000 cycles
- Standard mortise pocket for easy leverset installation
- Door widths: 3', 3½', 4', and 6' double door with removable mullion
- Installs in wall thicknesses 4½" - 12½"

### CONFIGURATIONS

Call your Wenger representative for the best solution for your program and an estimate to help you budget your investment.



Full Window  
(STC 51)



Solid  
(STC 50)



Accent  
Window  
(STC 50)



Half Window  
(STC 50)



6' Double Door  
with Full Windows  
(STC 49)





## TRADITIONAL ACOUSTIC PANEL SERIES

Enhance the acoustics of your rehearsal space with Wenger's Traditional Acoustic Panels. We design and manufacture a wide-range of panel sizes, types and finish options. Since the needs of each space are unique, Wenger provides consultation on how to optimize the acoustics in your rehearsal room.

**Guaranteed Acoustic Performance** – Every room is first analyzed to provide the best solution of absorption and diffusion, and then Wenger guarantees the resulting acoustical performance.

**Solves Acoustic Problems** – Wenger understands the acoustic problems that negatively affect rehearsal rooms such as flutter echo, hot spots and dead spots, lack of clarity, and excessive loudness. Wenger has a diverse product offering to effectively eliminate these problems.

**Diverse Product Offering** – Wenger has engineered five unique technical designs, in dozens of sizes, shapes, diffusion angles and finish options, to yield a broad selection of acoustic panels.

### COLORS

#### PREMIER UPHOLSTERY



Wenger acoustic panels add visual appeal. You can choose from dozens of attractive fabric colors to coordinate with other Wenger products and compliment your color scheme.

### CONFIGURATIONS

Call your Wenger representative for the best solution for your program and an estimate to help you budget your investment.



Absorber Panels



Type II Convex Diffuser Panels



Type I Convex Diffuser Panels



Quadratic Diffuser Panels



Pyramid Diffuser Panels



## DYNAMIC ACOUSTIC PANEL SERIES

Wenger's Dynamic Acoustic Panels have an upscale finish and the series includes the patented tunable panel, which can change its sound absorption properties. A system of tunable panels can be used to create a truly flexible classroom, ideal for various music styles and ensemble sizes. Simply turn the handle of the tunable panel to the left to maximize absorption, and right to maximize diffusion. Take control of your room acoustics with the Dynamic Panel Series.

**Flexibility** – Allows the same rehearsal space to be used for both instrumental and choral rehearsals. A series of tunable panels can change the reverberation time by 0.5 to 0.8 seconds. Acoustic test data is available.

**Innovation** – The tunable panel combines the latest manufacturing technology with innovative engineering for a truly unique product that you won't find anywhere else. The simple turn of a handle changes the amount of airspace behind a microperforated panel, changing how much sound is absorbed across a wide-range of frequencies.

**Aesthetics** – With their unique shape and finishes, the dynamic panel series offers a fresh look for college and university recital halls as well as rehearsal rooms. Dozens of fabric colors are available, as well as woodgrain finishes to match other Wenger products.

- Series includes tunable panel, as well as matching absorber and diffuser panels
- Tunable panel is easily interchangeable for absorption or diffusion
- Provides broad range of variable absorption, from 125Hz to 2000Hz
- Durable construction and replaceable fabric cover
- Available in 4'w x 4'h and 4'w x 8'h sizes

### CONFIGURATIONS

Call your Wenger representative for the best solution for your program and an estimate to help you budget your investment.



**Diffusion Mode**

Reflects sound waves for improved blending of sound.



**Absorption Mode**

Absorbs sound waves to lower sound level.





# ACOUSTIC SHELL COMPARISON

## What Matters to You



### DIVA®

### MAESTRO®

### LEGACY®

### TRAVELMASTER™

#### USAGE

- Standard or custom full-stage enclosure
- Optimal on-stage acoustics and sound projection to the audience

- Standard full-stage enclosure
- Enhances on-stage acoustics and projection to the audience

- Portable shell design allows almost any space to become a performance venue
- Improves projection to the audience

- Traveling acoustical shell provides improved acoustics while on tour or within multiple venues
- More suitable for choral groups

#### WHERE TO USE

- Large to medium stages
- Performing arts centers, universities, colleges and high schools

- Medium to small stages
- Community auditoriums and high schools

- Small auditoriums, gymnasiums and cafeteriums

- Portable shell for any indoor venue

#### COMPONENTS

- Acoustical wall towers
- Acoustical ceiling with available integrated lighting

- Acoustical wall towers
- Acoustical ceiling with available integrated lighting

- Acoustical wall towers
- Optional Forte or Diva ceilings

- Base wall panels and filler panels

#### SHELL MOBILITY

- Air Transporter
- Optional non-marring wheeled transporter
- Non-marring integrated rear casters

- Integrated non-marring casters
- Front casters have a built-in leveling feature

- Integrated heavy-duty soft swivel casters

- Freestanding base without casters

#### FEATURES

- Lightweight aluminum frame
- Variety of panel shapes and densities
- Custom wood veneer options
- Access doors
- Lighting package

- Lightweight frame and panel construction
- Lighting package
- Wide variety of paint and plastic laminate finish options
- Access doors

- Portable acoustical shell
- Largest coverage area of any portable acoustical shell (each tower is 90 sq. feet)
- Can pass through a 3'w x 7'h door opening

- Modular shell for easy transportation to anywhere there is a performance

#### STORAGE

- Towers nest together for compact storage
- Ceilings rotate vertically for storage on stage rigging
- Optional ceiling and tower storage carts

- Towers nest together for compact storage
- Ceilings rotate vertically for storage on stage rigging
- Optional ceiling and tower storage carts

- Towers nest together for compact storage

- Legs are detachable for compact hauling and storage

#### PANEL MATERIAL

- Composite panel, 2" thick

- Composite panel, 1" thick

- Composite panel, 1" thick
- Thermally fused laminate

- Molded ABS plastic

#### FINISHES

- Wood veneer, painted or plastic laminate

- Painted or plastic laminate

- Several choices

- Oyster



## DIVA® ACOUSTICAL SHELL

An investment in Diva acoustics will reward you the first time you hear the remarkable difference. Diva is a beautiful centerpiece for your stage that is engineered to last for years and years. Diva is also incredibly easy to use, so you can use it more often. No other acoustic shell gives you so much long-term value.

- Durable – Incredible Acoustic Results – A Diva Shell System is the cornerstone of a remarkable and clear acoustic plan for your facility
- Light Weight – The industry's first all-aluminum frame
- Air Mover – Glide your towers into place on a cushion of air
- High Grade Wood Veneers – Many options for finishing your custom shell to match your facility's design
- Extensive Product Knowledge and Experience – No other company has the know-how and industry experience to help you design, plan, and deliver such an effective and beautiful acoustic shell





## LEGACY® SELECT ACOUSTICAL TOWERS

The latest Wenger technology gives you three attractive, effective acoustical shell options to fit your application and budget. Its mobility allows you to acoustically transform almost any space within a facility into a performance venue.

We pioneered acoustical shell design, so it's no surprise that our honeycomb core panel construction delivers enhanced acoustics to both the ensemble and the audience. Sets up quickly and raises in a few seconds

- Seamless Aesthetic – Get a full-stage tower look in a portable shell with a curved face and many woodgrain laminate options
- Foldable Design – Top panel folds down for storage off stage
- Compact Storage – Bottom filler panel is removable to allow compact nesting of towers in storage position



## ACOUSTIC SHIELD

The Acoustic Shield effectively reduces potentially damaging sound energy and features a unique cantilever arm that extends over chair backs for ideal positioning behind the head of the musician. This easy-to-use, lightweight shield has a low-profile base that provides excellent stability without interfering with musicians or stands.

- Large 22½" w x 17" h shield surface for maximum diffusion
- Use at its higher position to deflect sound around a musician's head or use it at its lower position to help project French horn sound
- Adjustable height from 10" - 43"
- Folds compactly with built-in carrying handle



**MODEL NUMBER**

143E102

**PRODUCT**

Acoustic Shield

## LEGACY® CLASSIC ACOUSTICAL SHELL

Legacy Classic is an excellent portable acoustic shell that can transform just about any space into an impressive-sounding performance venue, while still being a simple one-person set-up. The Legacy Classic is the go-to choice for an easily maneuverable yet professional shell.

- Designed for one person to set up in a short amount of time
- Adjust the canopy angle for optimizing sound reflection to the audience
- No protruding front legs eliminates interference with setup and trip hazards
- Lift mechanism to raise and lower shell
- Filler panel provides full coverage within 1" of floor and folds up for storage
- All panels fit flush with no overlap shadows or exposed fasteners
- Fully extended height is 15'2"
- In storage position, unit fits through 36"w x 80"h door opening
- 90 square feet of reflective surface
- Units nest for storage

### COLORS



Oyster



Harvest  
Maple



Roll shell into place. Lower its kick panel and raise and set the canopy.



Use tool to adjust canopy angle for optimum sound projection.



Turn handle of lift mechanism to set shell height into performance position.



Position panels together to create your finished shell.

### MODEL NUMBER

186L054

186L055

### PRODUCT

Legacy Classic, Tapered Canopy

Legacy Classic, Rectangular Canopy

\*Additional Charge For Harvest Maple

## LEGACY® BASIC ACOUSTICAL SHELL

Turn your gym or cafeteria into a performance venue in minutes with our Legacy Basic acoustical shell. Designed for a one-person setup, just roll it into place, set the canopy angle and crank it up to its full height for impressive acoustics on a budget.

- Sets up quickly and raises in a few seconds
- Canopy adjusts to four different angles to optimize reflection to the audience
- No visual hardware on front panel eliminates exposed screws and brackets that may cause unwanted light reflections
- Fully extended height is 13'6"
- Upper panels are 1" thick with honeycomb core. Lower panel is ¾" thick with laminated wood core
- Easy, intuitive lift mechanism for raising and lowering shell
- Canopy adjusts to 45, 60, 75 and 90-degree angles
- Legs protrude in front of shell to provide counterweighted base design
- Canopy panel is 6'w x 36"h



Shells nest together for compact storage.



Roll shell into place.



Adjust snap-in pins for desired canopy angle.



Lift canopy to preset angle for optimum sound projection.



Turn handle of lift mechanism to set shell height into performance position.

MODEL NUMBER	PRODUCT
186J052	Legacy Basic, Tapered Canopy
186J053	Legacy Basic, Rectangular Canopy



## TRAVELMASTER™ ACOUSTICAL SHELL

With the Travelmaster Acoustical Shell, you can bring a reliable acoustic environment with you wherever you perform. Durable and lightweight, these shells were engineered for maximum portability and sound reflection so you can give a perfect performance every time.

- Sets up easily and disassembles fast for transport anywhere
- Lays flat and compact for transport on the Travelmaster Storage Cart
- A six-unit set can be set up or taken down in less than 30 minutes
- Formed ABS panels have built-in diffusion providing excellent cross communication for ensembles
- Durable, lightweight panels provide large, acoustically reflective geometric surfaces
- Legs are designed to fold out for fast setup
- Base panels adjust from 9'4" - 12'2" heights
- 3'1"w x 9'6"h filler panels attach to base panels



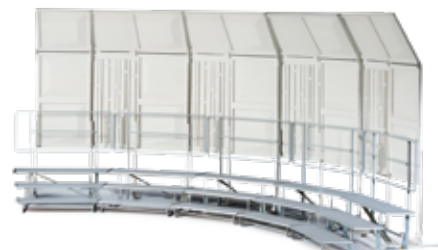
Roll shell into place.



Set-up panels.



Adjust canopies to the desired angle.



Position panels together to create your finished shell.

### MODEL NUMBER

L015

L035

064A170

### PRODUCT

Travelmaster Shell Base Panel

Travelmaster Shell Filler Panel

Travelmaster Move & Store Cart









# CHORAL RISERS

From setup to tear down, our choral risers are designed to be as hassle free as possible. Configurable designs and stand out features allow you to focus on your performances and move quickly and conveniently from one place to the next.

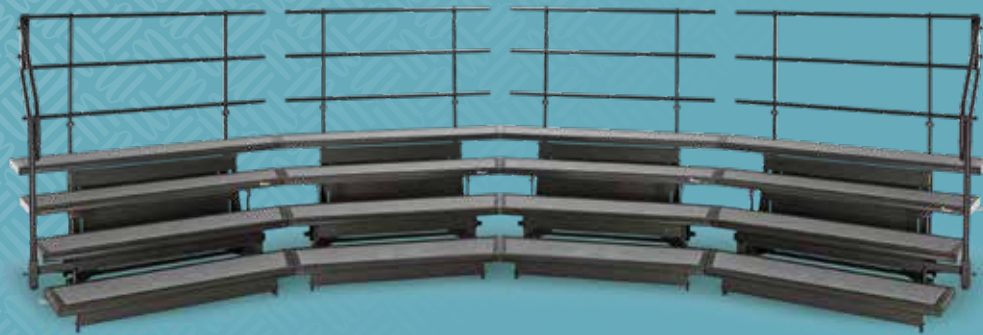


# CHORAL RISERS

## SIGNATURE® CHORAL RISERS

Our Signature Choral Risers are designed to incorporate every meaningful advantage possible, all with a full 15-year warranty. An easy-to-reverse design and adjustable riser arrangement makes for quick and secure transitions. Optional siderails attach without tools, while 3- and 4-step models roll easily through standard doorways.

- Formed and welded steel construction for unparalleled stability and quiet performance
- Fold-down design allows easy one-person setup
- Integrated backrail with child-height safety crossbar
- Bolt step mount provides the safety of bolted construction while letting you reverse steps to create new setup configurations
- Singers feel confident standing on Signature risers with a 150 lb live load capacity per ft<sup>2</sup>
- Designed for in-facility use, easily fits through standard doorways
- Rubber edging protects risers when being moved or stored



Shown with optional siderail

3- and 4-Step riser sets available.



Compact footprint, both the 3- and 4-step model fold up for compact storage and easy transportation.



A Signature Choral Riser is easy for one person to roll and control.



Maneuver it into place and unfold with a single fluid motion.



It sets up quickly and easily and provides excellent stability.



4-step model shown with optional siderail.

## ACCESSORIES

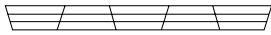


Siderails

Signature Choral Risers may be arranged in a variety of configurations to support both large and small choral groups and may be adapted to fit almost any space. Use the charts below as a general guideline when determining your needs. Contact your Wenger representative for help in making your final selection.

3-STEP SIGNATURE (098G053)			4-STEP SIGNATURE (098G054)		
GROUP CAPACITY*	UNITS NEEDED	SPACE REQUIRED	GROUP CAPACITY*	UNITS NEEDED	SPACE REQUIRED
12-16	1	6'w x 4'10"d	17-23	1	6'6"w x 6'd
24-32	2	11'10"w x 6'4"d	34-46	2	12'10"w x 6'11"d
36-48	3	17'5"w x 6'3"d	51-69	3	18'10"w x 7'9"d
48-64	4	22'5"w x 7'7"d	68-92	4	24'3"w x 9'1"d
60-80	5	26'10"w x 9'd	85-115	5	29'1"w x 10'6"d
72-96	6	30'7"w x 10'10"d	102-138	6	33'1"w x 12'4"d
84-112	7	33'6"w x 12'9"d	119-161	7	36'2"w x 14'4"d
96-128	8	35'5"w x 15'd	136-184	8	38'4"w x 16'6"d

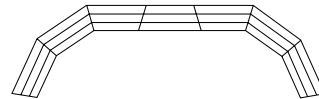
\*First number indicates how many high school students will fit on a riser set if all students stand shoulder to shoulder. Second number indicates how many students will fit on a riser set if they are all facing center with shoulders overlapping. Numbers include a row of students standing on the floor. Adult groups should use lower number.



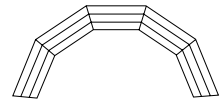
For a straight arrangement, alternate reversed riser units with regular units.



For a winged arrangement, reverse only the center unit.



For a horseshoe arrangement, reverse the center unit and add three regular units to each end.



For a semicircular arc, place regular units end to end.

## COLORS



Grey Carpet



Step supports are welded steel for maximum stability and strength. Backrails are permanently attached for maximum safety. Risers have a stable, secure contact with the floor when in the performance position.



Carpet edges protected by structural aluminum extrusions adds both distinction and stability.



### Riser Reversibility

Easily change riser arrangements by simply switching the position of the steps on the frame. You can configure Signature Risers into straight, winged, horseshoe, or semicircular designs that are every bit as secure as the original position.

## MODEL NUMBER

098H053

098H054

098G541

## PRODUCT

3-Step Signature Riser

4-Step Signature Riser

Siderail Set (2)





# CHORAL RISERS

## TOURMASTER® CHORAL RISERS

No other risers travel this smoothly; it's easy to take them around tight corners, across the parking lot and into a bus or a van. Tourmaster risers will deliver reliable operation for a long time, guaranteeing that they are your best value for a traveling riser. No wonder they are the #1 choral riser in the world.

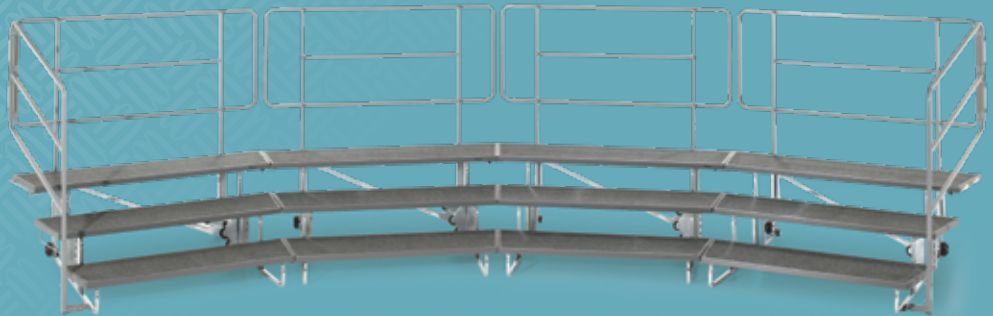
- A proven design that can withstand the rigors of institutional use
- Folds and unfolds in 10 seconds
- Across country or across town, Tourmaster Risers fold, roll and travel smoothly
- Minimal storage space required when not in use
- Safe and solid traveling riser with 125 lb per ft<sup>2</sup> load capacity
- Durable carpeted plywood steps in both 18" and 24" depth
- Steps can be reversed to create different configurations
- Steel frame with heavy-duty wheels and built-in stair glides stands up to years of use
- 3-Step/18" deep model available in 4' and 6' lengths, with optional 4th-step addition
- 3-Step/24" deep model available in 4'7" length, with optional 4th-step addition

### COLORS



Grey Carpet

Shown with  
optional siderails  
and backrails



Tourmaster units roll smoothly through hallways, around tight corners, and up and down stairways.



Each unit quickly unfolds accordion-style.



Step on the frame and pull the riser toward you to raise it to the upright position.



Optional safety backrails and siderails attach quickly and securely without tools.



Move and store your riser sets wherever you need them. Each cart holds up to four risers, plus backrails and 4th-step additions.

### ACCESSORIES



Backrails  
and  
Siderails



4th-Step



Move & Store Cart

## TOURMASTER CHORAL RISER SETS

Tourmaster Choral Risers may be combined to match the needs of any size group. Use the charts below as a general guideline, please contact your Wenger representative for help in determining what makes the most sense for your situation.

18" 3-STEP 6' TOURMASTER SETS			18" 3-STEP 4' TOURMASTER SETS			24" 3-STEP 4'7" TOURMASTER SETS		
GROUP CAPACITY*	UNITS NEEDED	SPACE REQUIRED	GROUP CAPACITY*	UNITS NEEDED	SPACE REQUIRED	GROUP CAPACITY*	UNITS NEEDED	SPACE REQUIRED
12-16	1	6'w x 4'10"d	8-12	1	4'3"w x 4'8"d	8-12	1	4'7"w x 6'2"d
24-32	2	11'10"w x 6'4"d	16-24	2	8'6"w x 5'd	16-24	2	9'2"w x 6'6"d
36-48	3	17'5"w x 6'3"d	24-36	3	12'7"w x 5'4"d	24-36	3	13'6"w x 6'10"d
48-64	4	22'5"w x 7'7"d	32-48	4	16'8"w x 6'1"d	32-48	4	17'10"w x 7'7"d
60-80	5	26'10"w x 9'd	40-60	5	20'4"w x 6'8"d	40-60	5	21'10"w x 8'2"d
72-96	6	30'7"w x 10'10"d	48-72	6	23'10"w x 7'8"d	48-72	6	25'8"w x 9'3"d
84-112	7	33'6"w x 12'9"d	56-84	7	27'w x 8'8"d	56-84	7	29'2"w x 10'2"d
96-128	8	35'5"w x 15'd	64-96	8	30'w x 9'11"d	64-96	8	32'3"w x 11'6"d

18", 4' 4th-step addition will add space for 3-4 performers per unit. 24", 4th-step addition will add space for 3-4 performers per unit. 18", 6', 4th-step addition will add space for 4-5 performers per unit.

\* First number indicates how many performers will fit on a riser set if all performers stand shoulder to shoulder. Second number indicates how many performers will fit on a riser set if they are all facing center with shoulders overlapping. Numbers include a row of performers standing on the floor. Adult groups should use the lower capacity number.

## RISER REVERSIBILITY

Wenger makes it easy to change riser arrangements by simply switching the position of the steps on the frame.



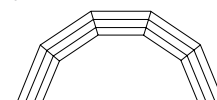
For a straight arrangement, alternate reversed riser units with regular units.



For a winged arrangement, reverse only the center unit.



For a horseshoe arrangement, reverse the center unit and add three regular units to each end.



For a semicircular arc, place regular units end to end.

MODEL NUMBER	PRODUCT
024J657	6' 3-Step, 18" step, Riser
024J667	6' 4th-Step Addition
024G778	6' Backrail
024F950	Cart for 6' Riser, 18" Step
024J642	4' 3-Step, 18" Step, Riser
024J652	4' 4th-Step Addition
024G763	4' Backrail
024F951	Cart for 4' Riser, 18" Step
024J672	4'7" 3-Step, 24" Step Riser
024J682	4'7" 4th-Step Addition
024G763	4' Backrail
024F952	Cart for 4' Riser, 24" Step
024F017	Siderails Set (2)







# STAGING AND SEATED RISERS

At Wenger our staging systems are built on the assumption that you have more needs than budget. Musical productions, graduations, lectures, assemblies, show choirs, etc., the list goes on long after the purchase has been made. With our flexible staging solutions that have pushed the limits in technical achievements and materials, from seated risers to performance stages, Wenger offers you unlimited stage configuration possibilities.





# STAGING AND SEATED RISERS

## STAGETEK® STAGING SYSTEM



### COLORS

#### SURFACE



Cracked Ice (Black)  
Standard surface



Moroccan (Black)  
Versalite surface match



Quadriple (Black)  
Heavy-duty surface



Natural  
hardboard



Carpet (Grey)  
or carpet-ready

### CONFIGURATIONS

StageTek® comes in a wide variety of configurations. Call your Wenger representative for the best solution and budget estimate for your program.

### ACCESSORIES



Leg Options



Guardrails



Move &  
Store Carts



Stairways



Roll-A-Deck Kit



Connectors/  
Brackets



Skirting and  
Backdrops



ADA-Compliant  
Ramps



“We’re a very creative school – everyone is full of ideas – and our StageTek platforms adapt to almost anything: theatrical presentations, musicals, dance, opera or multi-department events. We’re making full use of them.”

– Chris Krambo

Technical Director, Los Angeles County High School for the Arts, Los Angeles, California

StageTek is the standard for versatility. Lighter, stronger, easier to handle and faster to set up, the StageTek staging system is as elegant and stable as it is durable and repairable. Compared to anything else, StageTek is the best all-around platform and investment.

- Simple, economical, plug-in legs make an unlimited number of configurations possible
- Legs are fabricated from round 2½" diameter aluminum extrusions and finished with a non-marring cap
- Legs are available in three types: Fixed height, telescopic, and adjustable height
- Standard Uniform Load: 125 lb/ft<sup>2</sup>  
Heavy-Duty Uniform Load: achieved with center leg or smaller decks, 200 lb/ft<sup>2</sup>
- Easy-to-handle platforms have lightweight aircraft-grade aluminum frames with rounded contours that are easy to grip
- Decks are ¾" thick and constructed of Group I veneer plywood with a protective laminate on both sides
- Decks have cast aluminum leg sockets and are secured quickly without the use of tools
- Fixed leg height: 8", 16", 24", 32", 40" and custom sizes available

#### STANDARD DECK SIZES

3' x 3'

3' x 6'

3' x 8'

4' x 4'

4' x 6'

4' x 8'

Custom sizes available





# STAGING AND SEATED RISERS

## STAGETEK® OUTDOOR STAGING

The StageTek® Outdoor decks add to Wenger's StageTek System that has proven itself over the past decade in thousands of schools, theaters, events centers and more. The outdoor decks are built for the elements, so you do not have to panic when the forecast turns murky. Plus, the simple and adjustable leg options make assembling a stage over uneven terrain fast and easy.

- All-Weather Design – Aluminum deck designed for outdoor use in all types of weather. Decks have spaces for drainage and a textured surface to improve traction and reduce shine. Will not rot, peel, warp or swell and is non-combustible.
- Strong and Stable – Impressive load ratings that exceed performance expectations for uniform load, side load and point load.
- Compatible – Works with existing StageTek decks, legs, and accessories

### STANDARD DECK SIZES

4' x 4'

4' x 6'

4' x 8'



Legs available from 4" – 120" (102mm – 3048mm)

- Fixed Height
- Adjustable
- Telescopic legs



A crew of two can set up an entire StageTek stage – with accessories – quickly. StageTek goes up without pins, tools or separate assemblies. Just slip the legs into the sockets and tighten.



StageTek's outdoor textured surface improves traction and reduces shine. Spaces for drainage ensure water doesn't pool on deck.

## ACCESSORIES



Leg Options



Guardrails



Move &  
Store Carts



Stairways



Roll-A-Deck Kit



Connectors/  
Brackets



Skirting and  
Backdrops



ADA-Compliant  
Ramps

## STAGETEK® SEATED RISERS

StageTek Seated Risers have the versatility for you to build the right configuration for any sized group and performance space. Simple and lightweight, StageTek Seated Risers can be set up in minutes. See for yourself why our risers have been a staple in facilities and classrooms for decades.

- Simple, economical, plug-in legs make hundreds of configurations possible
- Save as much as 50% in storage space with our storage and transport cart
- Load ratings (Uniform Load, Dynamic Load and Point Load) meet or exceeds building code requirements
- Easy-to-handle sections have lightweight aircraft-grade aluminum frames with rounded contours that are easy to grip
- Decks have cast aluminum leg sockets and legs are quickly secured without tools
- Decks secure to each other quickly and easily without the use of tools
- Decks are  $\frac{3}{4}$ " thick and constructed of Group I veneer plywood with a protective laminate on both sides
- Legs are fabricated from round  $2\frac{1}{2}$ " diameter aluminum extrusions and are finished with a non-marring cap
- Legs are available in three types: Fixed height, telescopic, and adjustable height
- Fixed leg height: 8", 16", 24", 32", 40" and custom sizes available
- Deck sizes: 3'w x 3'd, 4'w x 4'd, 6'w x 3'd, 8'w x 4'd, 6'w x 4'd and 8'w x 3'd
- Pie shaped and custom sizes available



### COLORS | SURFACE



Cracked Ice (Black)  
Standard surface



Moroccan (Black)  
Versalite surface match



Quadriple (Black)  
Heavy-duty surface



Natural  
hardboard

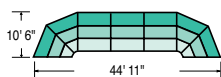


Carpet (Grey)  
or carpet-ready

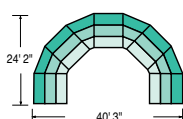
### EXAMPLES OF TYPICAL RISER SETS

Pie sections are the key to creating different shaped configurations. As illustrated in these sets, one tiered riser set can be arranged in several different shapes by changing the position of the pie sections.

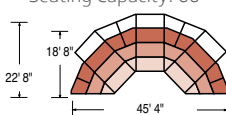
**SET #105 (WINGED SHAPE)**  
Seating Capacity: 72\*



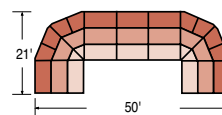
**SET #125 (SEMICIRCLE SHAPE)**  
Seating Capacity: 104\*



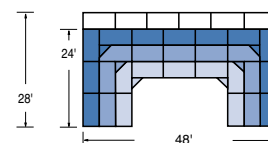
**SET #605 (ARC SHAPE)**  
Shown with percussion extension  
Seating Capacity: 60\*



**SET #625 (HORSESHOE SHAPE)**  
Seating Capacity: 84\*



**SET #265 (RECTANGLE SHAPE)**  
Shown with percussion extension  
Seating Capacity: 96\*



\*Seating capacities are based on one row of chairs on the floor.

### CONFIGURATIONS

StageTek® comes in a wide variety of configurations. Call your Wenger representative for the best solution for your program and an estimate to help you budget your investment.





# STAGING AND SEATED RISERS

## STAGETEK® ADA-COMPLIANT ACCESSIBILITY RAMP

Wenger portable ramps are strong, stable and easy to assemble. They have been designed to attach securely to Wenger staging units and are available in a wide variety of heights and configurations. This cost-effective ramp solution helps ensure that all performers have an equal chance to take the stage.

- Ramp design meets all guidelines of the Americans with Disabilities Act (ADA) according to the 2015 International Building Code (IBC)
- Hand rails are continuous throughout ramp
- Clear width on ramp is a minimum of 36"
- Landings are a minimum of 60"w x 60"d at any direction change  
Railings extend 12" at end of handrails
- Contrasting color indications designate any elevation changes
- Multiple ramp configurations available to fit your needs
- Compact storage is ideal for facilities that have limited storage space
- Parts are labeled for quick set-up
- Adjustable legs are provided for easy set-up on uneven surfaces



24" ramp elevation shown with optional mid-rails.

### CONFIGURATIONS

StageTek® ADA-Compliant Ramps are customized to your specific application. Call your Wenger representative for the best solution and budget estimate for your program.



# STAGETEK® ACCESSORIES

The StageTek system on its own is the most versatile on the market, but combined with Wenger's accessories you can customize your stage even further. Stairways, rails, skirts, backdrops and more make it the last staging system you'll ever buy.

## STAIRWAYS AND STEPS

Easy-to-attach stairways include dual, heavy-duty handrails and safety treads on 3'-wide steps without tools. Our articulating, variable-height stair units adjust to a range of stage heights. Available in 3-, 4-, 6-, and 8-step models. Our fixed-height units come in 2-, 3-, or 4-step models.



MODEL NUMBER	PRODUCT
281A201	3-Step Articulating Stairway For 12" - 24" Stage Heights
281A202	4-Step Articulating Stairway For 16" - 32" Stage Heights
281A203	6-Step Articulating Stairway For 24" - 48" Stage Heights
281A204	8-Step Articulating Stairway For 32" - 64" Stage Heights
281A100	2-Step Stairway For 16" Or 24" Stage Heights
281A101	3-Step Stairway For 24" Or 32" Stage Heights
281A102	4-Step Stairway For 32" Or 40" Stage Heights
280B500	36"w X 18"d Box Step

## UNIVERSAL GUARDRAILS

Designed to easily attach to the stage without tools, Universal Guardrails meet or exceed loading and rail-height building code requirements. A special IBC Compliant infill panel (shown at right) complies with 4" sphere building code requirements.



MODEL NUMBER	PRODUCT
281D404.001	3' Guardrail
281D404.002	4' Guardrail
281D404.004	5' Guardrail
281D404.003	6' Guardrail
281D404.008	8' Guardrail

## LEG RETENTION CLIPS

Each set holds 4-legs and secures them under your StageTek decks



MODEL NUMBER	PRODUCT
281A600	Leg Retention Clips

## LEG CONNECTORS/BRACKETS

We offer a variety of leg connectors to support multiple configurations

■ Leg-to-leg brackets ■ Deck-to-leg bracket ■ Overlap bracket



## MOVE & STORE CART

Transport and store StageTek decks or guardrails. Holds standard and non-rectangular decks vertically for stable transport through 3' doorways.



6 Decks  
Universal Cart



12 Decks  
Horizontal Cart



6 Guardrails  
Universal Cart

MODEL NUMBER	PRODUCT	SIZE
113K001	Universal Cart	2'6"W X 8'D X 5'3"H
281A864	Horizontal Cart	

## STAGETEK® ROLL-A-DECK® KIT

StageTek platforms can be transformed into highly mobile rolling platforms with a simple kit consisting of four legs with locking casters and a connection bracket. With this kit your StageTek decks become the perfect drum riser or elevated production platform.



Two Roll-A-Deck® kits shown with two StageTek® decks

MODEL NUMBER	PRODUCT	SIZE
280B550	Stagetek Roll-A-Deck Kit (4 Legs With Casters) Note: decks not included, example shown has two kits and two decks	

## CLOSURE PANELS



Front and side closure panels for seated risers cover the space between levels and enclose each end to create a finished, built-in look.

## SKIRTING & BACKDROPS



Add finishing touches to complete your stage with skirting and backdrops.

## BACKDROP FRAME



Supports a curtain up to 8' tall. The frame connects to the guardrail and clamps to the legs of your deck without tools. Curtain attaches with hook and loop fastening strips.

## TROUPER® STAGING

Trouper Staging features a fold-out design without the hazard of pinch points found in many fold-and-roll stages. Trouper staging is built with superior structural integrity and the highest quality materials to ensure reliable operation over a long life.

- Integrated platform and legs make setup simple and tool free
- Camlock unit-to-unit connector provides a safe and solid connection between units
- Heavy-duty construction with a 200-lb-per-square-foot live load rating
- Frame constructed of solid 16-gauge steel
- Decks constructed of  $\frac{3}{4}$ " solid plywood
- Deck edges are fully capped by finished steel edging that overlaps and protects the deck surface and carpet
- Legs unfold quickly for easy setup
- Fixed-height leg lengths: 8", 16", 24", and 32"
- Optional dual-height leg lengths: 16"/24" and 24"/32"
- Individual decks available in 6'w x 3'd, 6'w x 4'd, 8'w x 3'd and 8'w x 4'd



### COLORS



Moroccan (Black)



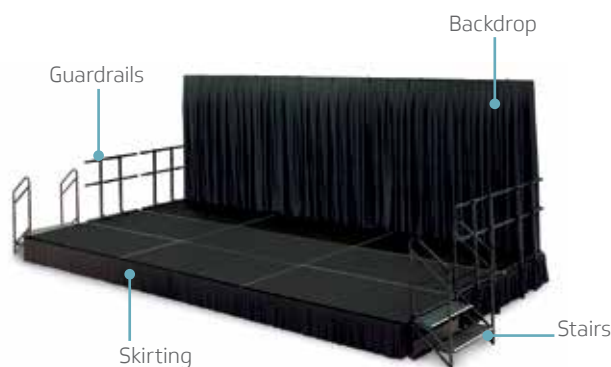
Carpet (Grey)

### CONFIGURATIONS

Trouper® Staging comes in a wide variety of configurations. Call your Wenger representative for the best solution and budget estimate for your program.

### ACCESSORIES

Connectors | Brackets | ADA Ramp | Closure Panels



Move & Store Cart









# OUR PERFORMING ARTS EQUIPMENT IS BUILT ON OVER 75 YEARS OF EXPERTISE.

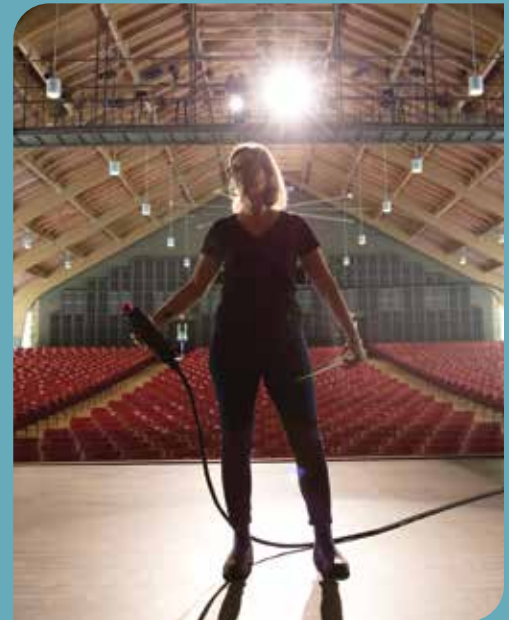
From acoustics-optimizing shells and banners, to the most advanced theatre rigging and motion control solutions available, Wenger has the equipment you need to get the most out of your performance spaces. Wenger's deep and intimate understanding of these performance spaces translates into equipment that helps to maximize their potential for both performers and audiences. From full-stage auditoriums to black box theatres, Wenger performing arts equipment allows you to put your best stage forward.





# THEATRE RIGGING SOLUTIONS

Wenger and J.R. Clancy. Two great names in theatrical equipment with a shared goal; deliver the best stage engineering solution for your auditorium or performance center. From hoists and motion control systems to counterweight rigging systems, Wenger and J.R. Clancy bring state-of-the-art performance solutions to your facility.



## TRAINING, INSPECTION & MAINTENANCE

At Wenger Corporation, we are committed to helping you create and maintain a safe, reliable venue.

### ENSURE THAT YOUR THEATER IS THE SAFEST POSSIBLE ENVIRONMENT FOR YOUR PERFORMERS, STAFF, STUDENTS AND AUDIENCE.



Our thorough inspections conducted through our J.R. Clancy Train, Inspect & Maintain (TIM®) program protect your investment, ensure the safety of your facility, and keep you compliant with the latest ANSI standards. We provide additional documentation for your safety program, and during inspections will identify any equipment and/or installations that may be unsafe.

Our ETCP-trained technicians can handle any job, from simple repairs and replacements to complex troubleshooting and renovations. If you're looking to upgrade, we can provide you with a variety of options and a complete estimate to help you plan for your new Wenger and J.R. Clancy products.

If you have any questions about your Wenger and J.R. Clancy equipment, just give us a call at 800-836-1885 or visit our web page to complete an online form.



### MAKE SURE YOUR RIGGING MEETS ANSI STANDARDS

The American National Standards Institute (ANSI) is dedicated to enhancing business competitiveness and quality of life by promoting and facilitating voluntary standards and safeguarding their integrity. ANSI E1.47-2020 Entertainment Technology, Recommended Guidelines for Entertainment Rigging System Inspections states that Manually Operated Equipment and Motorized Equipment should be inspected annually or immediately after equipment or components have been newly installed, altered or repaired. We schedule regular inspections with our customers to ensure their rigging systems are in excellent working order. We also train our customers to identify potential problems so they can act in the timeliest manner to promote ongoing safe operation.

Scan the qr code or go to <https://www.jrclancy.com/training-inspection-and-maintenance.php> to find out more.







## TRANSCEND® ACTIVE ACOUSTICS



Enhance the functionality and acoustics of any space with Transcend Active Acoustics. From performing arts centers, theatres and opera houses to arenas and places of worship, active acoustics technology requires fewer microphones and speakers to provide a more reliable and stable system. This streamlined, cost-efficient solution ensures the best possible sound quality for every seat in the house.

- **Dynamic – Advanced design.** A dedicated, state-of-the-art processor for Active Acoustics using high speed digital audio communications with the other system components
- **Clarity – Natural reflections.** Transcend Active Acoustics enhances the reflections of the space providing optimal acoustics for any performance or event
- **Transform – Flexible acoustics.** From choral and symphonic to drama and lecture, Transcend Active Acoustics can optimize the space for each performance
- **Connect – Command and control.** The entire system can be managed with remote control and visual monitoring using state-of-the-art Audio Architect software

## DIVA® ACOUSTICAL SHELLS

Diva acoustical shells combine industry-leading acoustics with the ease of portability to deliver unrivaled full-stage sound quality for performance spaces of all sizes. High-grade wood veneers impart a decided touch of elegance to your stage. With Diva, you get uncompromising acoustics and aesthetics in perfect harmony.

- Beautiful, full-stage acoustics for optimum on-stage sound and excellent sound projection to the audience
- Perfect for medium and large theatres
- Modular design accommodates everything from full orchestras to string quartets
- Integrated Wenger Lieto™ LED light fixtures available
- Finishes include: Paint, High-Pressure Laminate, High-Grade Wood Veneer and Custom Veneer Options



## MAESTRO® ACOUSTICAL SHELLS

With incredible sound quality, appearance and functionality, Maestro acoustical shells fit the demanding acoustic requirements of your performance center, and your budget. Maestro delivers impressive full-stage acoustics and elegant aesthetics.

- Finishes include: Low-Pressure Laminate, Paint, High-Pressure Laminate, and High-Quality Wood Veneer panel finish
- Towers nest together to reduce storage space required
- Ceiling rows set up easily with a crew of as few as two people
- Integrated Wenger Lieto™ LED light fixtures available



## TRANSFORM® ACOUSTICAL BANNERS

Optimize the acoustics of your performance space at the touch of a button. Transform motorized acoustical banners deploy quietly and quickly to control the levels of sound absorption and reflection in your space.

- Available in 3' - 10' widths
- Tubular motor driven system for use in an operator controlled or pre-set environment
- Banner system will integrate with J.R. Clancy's SceneControl™ systems and other intelligent control systems



# AUDIENCE SEATING

## STAGETEK® TIERED AUDIENCE SEATING

The StageTek® name is synonymous with innovation. Every StageTek component represents the pinnacle in design, engineering, materials and manufacturing. StageTek audience seating platforms are built on this industry-leading expertise, and give you the flexibility to create seating configurations that are right for the performance and the venue. A standing ovation is all but guaranteed.

- Load ratings (Uniform Load, Dynamic Load and Point Load) meet or exceed building code requirements
- Easy-to-handle sections have lightweight aircraft-grade aluminum frames with rounded contours that are easy to grip
- Decks have cast aluminum leg sockets. Legs are quickly secured with the rotation of the knob
- Platform Decks are  $\frac{3}{4}$ " thick and constructed of Group I veneer plywood with a protective laminate on both sides
- Legs are available in three types: Fixed height, telescopic, and adjustable height
- Fixed height legs are available in lengths that result in the following deck heights: 8", 16", 24", 32" and 40"



## PORTABLE AUDIENCE CHAIRS

Here's a smart, affordable and flexible addition or alternative to fixed audience seating that can adapt to changing theatre seating configurations. These chairs combine all the features and comfort you'd expect from a luxury theatre chair at a price that's just as comfortable. Available in standard and premier styles.

- Stable freestanding design that can be floor-mounted if desired.
- Extra comfortable with thick padding.
- Reliable automatic spring-return seat mechanism.
- Premier Audience Chair features finished hardwood on back, bottom and arm rests.
- Dimensions: 32" height x 21-25" wide (813 x 533-635 mm) in 1-inch (25 mm) increments.
- Available in a wide selection of fabrics and wood stains with custom design options available.
- Can be fitted with drink holders, donor plates and seat number plates.



Standard Portable Audience Chair

Premier Portable Audience Chair

## HIGH-DENSITY PORTABLE AUDIENCE CHAIRS

Comfortable. Flexible. Durable. These strong folding portable chairs are sure to leave a positive impression with your audience without leaving marks on the theatre or auditorium floors. X-frame construction prolongs the life of the chair and provides even weight distribution for enhanced comfort.

- Double tube and channel frame provides strength, durability and flexibility
- Multiple seat and back cushion options to choose from
- Lobe screws make seat backs virtually tamper-proof
- Duraflex action assures level seating on uneven surfaces
- Chair Width — 18" or 19½" — add 2¼" per arm
- Seat - 21¾"d x 17¾"h x 18¾"w
- Chair Height — 31¾"
- Weight — 16 lb
- Available Options: Without arms, one-arm, two-arms, ganging brackets, move and store cart, auto seat uplift, cupholder





## CAVEA™ FIXED AUDIENCE SEATING

Wenger Corporation has partnered with SERIES® Seating to engineer a new line of audience seating that specifically fits the needs of our K-12 education customers. We've combined industry-leading durability, comfort and an attractive price to create a seat that's exceptional in every way.

- Seat and back contours help position the occupant's body for proper posture and comfort
- Specific cushion density and patented webbed support system provide ideal comfort for the duration of performances
- Integrated lumbar support
- Curvature of the armrest provides proper support and placement of occupant's arms and wrists
- Seat rise mechanism is a  $\frac{3}{4}$  fold, noise dampening gravity rise system. It reduces noise and allows the seat bottom to be pushed back to allow more aisle space for people to pass
- Seat design with fully enclosed components eliminates any pinch points
- Having no exposed fasteners provides a clean look and reduces tampering with the seats
- "Drop-in" assembly reduces installation time and eliminates excess brackets and fasteners
- Compact seating envelop (16.5") maximizes seating capacity without compromising comfort







# PERFORMING ARTS

## STRATA® ORCHESTRA PIT FILLER

Custom-designed to fit the exact specifications of your orchestra pit, STRATA orchestra pit filler provides incredibly strong support while freeing up an amazing amount of space below. The system connects to your existing stage with ease while the acoustically dampened decks fit snugly to create an integrated surface that is extremely quiet.



- Pre-assembled substructure components make setup fast and intuitive
- Deck corners are constructed of glass-filled nylon to help eliminate sharp edges
- Deck surface options: natural or painted tempered hardboard, and tongue-and-groove wood flooring
- Basic system meets IBC rating and a uniform vertical load of 150 psf
- Deck surface takes a point load of 1000 lb on a 2" caster without leaving permanent marks

Deck locks to the substructure with a simple hex wrench connection. Each deck is isolated from other decks to eliminate rubbing and potential noise generation.

CROSS BEAMS attach to the main beam with a quick tube-and-socket connection – and no tools. This ensures an ideal fit even in applications with a difficult-to-match wall radius.

DIAGONAL BRACES are bolted to main beams and cross beams to eliminate loose parts and speed setup. Braces from each beam attach to columns with quick-release pins.

COLUMNS connect to the main beam with a quick-release pin. This smart, simple system makes switching lengths of columns – or the height of your entire pit filler – faster and easier than ever.

LEVELING FEET on all columns.

MAIN BEAMS connect to your stage front with a simple bracket to ensure a seamless connection with the permanent stage.



“The Strata Pit Filler is great – we’ve been completely satisfied. It’s much less expensive than a hydraulic lift system and a better solution for us. Other pit filler systems looked potentially dangerous and time-consuming to work with.”

– Mike Nicolai

Technical Director, Oconomowoc Arts Center, Oconomowoc, Wisconsin

## STUDIO® MAKEUP STATION

Getting ready for a performance is a lot easier with the right facilities and stage amenities. The Studio Makeup Station offers performers the luxury, convenience and comfort of a professional, wall-mounted lighted makeup station. The station mounts into wall studs or masonry at any height and hardwires into the room's electrical system, so two adjacent stations can share one light column.

- Light columns give performers clean, shadow-proof illumination
- Curved countertop allows you to lean in just 15" from mirror
- Recessed tray and overhead shelf for additional storage space
- Steel-laminated construction keeps the mirror from curving or splintering
- Medium-density fiberboard with stain-resistant, matte-white laminate
- Permanently mounted 3/16" diameter steel wire light bulb cages



## BACKSTAGE® MAKEUP STATION

Make the most of your limited space with the backstage makeup station. This lightweight, portable, lighted makeup station provides even, shadow-free lighting. And the large head-to-shoulders mirror makes it easy to achieve great results in a small space. This makeup station sets up on a table in seconds – just plug it in and go.

- Multiple stations nest together for compact storage
- Durable steel frame doubles as carrying handle
- Steel frame and unique aluminum light housing surround the mirror
- Single outlet and rocker switch combination with built-in GFCI protection
- Auxiliary power outlet operates with lights off



## PLANNING IS EASIER WITH OUR FREE PLANNING TOOLS:

We offer six comprehensive, free guides (including guides for performing arts and athletic facilities), and a powerful, online planning tool specially designed for architects, to help you navigate the construction planning process to meet your dream of creating music, performing arts and athletic facilities that bring out the best in your musicians, performers and athletes.



Scan the qr code for more Wenger resources  
[https://www.wengercorp.com/checklists.php?utm\\_source=pdf&utm\\_medium=pdf&utm\\_campaign=ME\\_Catalog\\_LT0050](https://www.wengercorp.com/checklists.php?utm_source=pdf&utm_medium=pdf&utm_campaign=ME_Catalog_LT0050)

## WE'VE GOT MORE FOR EDUCATORS:

There's more for educators than just great music education products on the Wenger website.

### TEACHER RESOURCE

<https://www.wengercorp.com/teacher-resources/>

Download classroom posters, sheet music, tips, interviews, insights, and resources.  
**ALL FREE!**

### PROJECT PROFILES

<https://www.wengercorp.com/projectprofiles/>

Read about new music education facilities and the challenges they overcame.  
 Photos, quotes and more!

### VIRTUAL TOURS

<http://www.wengercorp.com/vr/index.php>

Take a virtual walk-through of performance and practice spaces. Our new virtual technology lets you immerse yourself in the space and navigate by moving your mouse or swiping your finger. Plus, click on the embedded tags for more information on specific Wenger products.

The success of your new facility depends on your plan. At Wenger we'll help you plan your ideal environment while balancing budgets, needs and space. For more than 75 years, we've helped educators and administrators get the most out of every dollar. No company has spent more time with music educators or studied more types of facilities. We understand how to make music programs more successful.

Your Wenger representative is in tune with music education and performance and will help you make smart, cost-effective decisions on everything from product selection to space allocation. You'll benefit from our close relationships with architects, ensuring your satisfaction by providing a trusted resource for the complexities of designing a space.

We can collaborate with your committee and give you the support you need to present your plan. It's important to know that from concept to completion, putting Wenger expertise to work doesn't cost you a dime.

The planning process can vary from project to project. Fortunately, every process follows a timeline of similar steps. From the passing of a school bond all the way to construction, Wenger can help you every step of the way.

## PLANNING PROCESS STEPS

- 01 ▶ School Bond Vote
- 02 ▶ Pre-Planning
- 03 ▶ Programming
- 04 ▶ Schematic Design
- 05 ▶ Design/Development
- 06 ▶ Construction Documents
- 07 ▶ Bidding
- 08 ▶ Construction
- 09 ▶ Equipment Purchase
- 10 ▶ School Opening

“Wenger’s Planning Guide gave me some real practical ideas which we used in two junior high music facilities – they turned out very well. I’m amazed that some architects don’t take advantage of the materials Wenger has available. The Planning Guide is easy to read and offers excellent information.”

– Edward K. Skahan

*Vice President, Director of Design, Kluber, Skahan & Associates, Inc., Batavia, Illinois*



## SUSTAINABILITY



For as long as we've been developing high-quality, durable products to meet the needs of our customers, we've also been exploring ways to be better stewards of the environment we share. Whether it's the nearly 1,000 tons of materials we recycled last year or the energy-efficient lighting in our plant, our goals have always been green. Check out the green box below to see some of the ways we're helping reduce, reuse and recycle.

### IMPLEMENTING THE PHILOSOPHY OF THE USGBC

As a member of the U.S. Green Building Council, Wenger is dedicated to fulfilling USGBC's mission to promote green building practices. We understand and embrace the principles behind USGBC. [usgbc.org](http://usgbc.org).



### FOREST STEWARDSHIP COUNCIL® (FSC®) CHAIN OF CUSTODY (COC) CERTIFICATE

FSC is an independent, non-governmental, not-for-profit organization established to promote the responsible management of the world's forests. FSC provides internationally recognized standard-setting, trademark assurance and accreditation services to companies, organizations, and communities interested in responsible forestry. [fsc.org](http://fsc.org)  
FSC (FSC® C103872).



### MEETING UL GREENGUARD CERTIFICATION

The mission of UL GREENGUARD is to protect human health and quality of life through programs that help reduce chemical exposure and improve indoor air quality. To date, GREENGUARD has certified many Wenger products including Instrument Storage Cabinets, Posture Chairs and GearBoss® Storage Carts, with more certification to come. [greenguard.org](http://greenguard.org).



**PRODUCTS:**

- GREENGUARD certification for Chairs and Stands, Instrument, Garment, and Specialty Storage Cabinets, including UltraStor® and GearBoss® Storage Carts
- Optional environmentally sensitive core material in Instrument Storage Cabinets
- High-efficiency electronic ballasts in Sound-Isolating Practice Rooms
- Wax coating on Student Chair Tablet Arm Desks eliminates emissions vs three-step solvent process
- Powder paint finishing reduces waste by 65% vs plating/solvent processes

**MANUFACTURING:**

- Precise raw material ordering eliminates waste
- Computer-optimized cutting processes improve yield
- ISO quality-improvement tools reduce scrap
- Multiple use of manufacturing cooling/rinse water before discharge
- Residual material in aerosol cans is contained and disposed of properly
- Super-insulated drying and curing ovens minimize heat loss and reduce consumption. Green cleaning agents and a non-metallic conversion coating vs caustic finish pretreatments. Instant foam packaging — free of CFCs and HCFs — used where possible
- Stretch-wrapping eliminates corrugated waste
- Pallets are reused or re-manufactured
- Clean-burning diesel emission-control in Wenger delivery trucks
- Post-installation packaging is returned and reused or recycled

**OPERATIONS:**

- Use recycled paper, recycle all paper
- Regular facility-wide recycling collection
- Recycling drop-off for employees
- Routine collection of steel and aluminum dropoff
- Routine collection of oils used in manufacturing
- Electronic information delivery
- Advanced low-consumption plant lighting
- Smart HVAC central control system







Wenger®

# MAKE THE DECISION THIS YEAR TO INVEST IN MUSIC EDUCATION EQUIPMENT THAT WILL LAST FOR YEARS TO COME.

Whether you have a simple question about the color of a cabinet, or a complex inquiry about an acoustic solution, your Wenger representative is here to help. To find your representative, simply log on to [Wengercorp.com](http://Wengercorp.com) and click on "Find A Rep" or call us at 1.800.493.6437.





# TERMS AND CONDITIONS

## WENGER CORPORATION REPRESENTATIVES ARE THE BEST IN THE BUSINESS. CONNECT WITH YOURS TODAY!

Whether you have a simple question about a student chair or a complex inquiry about acoustic solutions, your Wenger representative can help.

Need assistance with specs, pricing, setting up delivery and installation? Just call your rep and we'll make it easy.

### CONTACTING YOUR WENGER CORPORATION REPRESENTATIVE IS EASY:

**Call 1-800-4WENGER.** Simply provide your location and we'll connect you to your rep.

**Go to our website at [wengercorp.com](http://wengercorp.com) and click on *Find A Rep* under the Contact menu.**



For Wenger Corporation Terms and Conditions please scan below or visit  
<https://www.wengercorp.com/terms-and-conditions.php>



## Wenger Corporation Terms and Conditions ([www.wengercorp.com/terms-and-conditions.php](http://www.wengercorp.com/terms-and-conditions.php))

**Controlling Provisions:** These terms and conditions and supplemental exhibits contained herein (the “Terms and Conditions”) govern the sale by WENGER CORPORATION (“WENGER CORP”) and purchase by any direct buyer (“Buyer”) of certain services, products, replacement parts and related software (collectively, the “Goods”). These Terms and Conditions comprise the entire agreement between the parties (collectively, the “Agreement”) and supersede all prior or contemporaneous understandings, agreements, or representations, whether oral or written. These Terms and Conditions shall supersede any provisions, terms, and conditions contained on any purchase order or other written form Buyer may use or provide prior or subsequent to the date of the Agreement, unless otherwise specifically agreed to in writing by WENGER CORP. Fulfillment by WENGER CORP of Buyer’s order does not constitute acceptance of any of Buyer’s terms and conditions and does not serve to modify or amend these Terms and Conditions.

**Quotations:** Any quotation is a good faith estimate. Acceptance of a quotation, whether by a separate purchase order or by other means, shall constitute an acknowledgment and approval of the quotation as written and an acceptance of these Terms and Conditions. Written quotations which have not been finalized by a binding purchase order shall expire on the date specified in the quotation or, in the absence of such specification, 30 calendar days from the date issued. WENGER CORP may revise or withdraw a quotation at any time prior to the finalization of a binding purchase order.

**Shipping:** While WENGER CORP will use commercially reasonable efforts to maintain the delivery date(s) acknowledged or quoted by WENGER CORP, all shipping dates are approximate and not guaranteed. WENGER CORP reserves the right to make partial shipments. WENGER CORP, at its option, shall not be bound to tender delivery of any Goods for which Buyer has not provided shipping instructions and other required information. The actual shipping weights may vary.

A minimum of two weeks’ advance notice is required when Buyer requests any delays in shipment, delivery, or installation beyond WENGER CORP’S acknowledged ship date. The costs of storage, rehandling, additional freight, and additional installation or labor costs will be billed to Buyer. If the Goods require storage, transfer to storage will be deemed as shipment to Buyer for all purposes, including but not limited to, invoicing and payment.

**Title, Risk of Loss, Inspection of Goods:** Title to the Goods and risk of loss for the Goods shall pass to Buyer upon WENGER CORP’S delivery of the Goods to the shipping point. Buyer shall immediately inspect the Goods upon receipt, and any damage must be noted on the delivery carrier’s bill of lading at time of receipt. If Buyer arranges a delivery carrier, WENGER CORP shall not be held liable for any damages caused after WENGER CORP provides product to Buyer’s delivery carrier. WENGER CORP is not liable for any shortages or nonconformance unless notified by Buyer within two business days of Buyer’s receipt of the Goods.

**Installation and Use:** Buyer will be solely responsible for the proper application, installation, and service of the Goods. Installation instructions are supplied by WENGER CORP and must be followed. WENGER CORP may provide installation services upon request for an additional fee.

**Buyer’s Acts or Omissions:** If WENGER CORP’S performance of its obligations under the Agreement is prevented or delayed by any act or omission of Buyer or its agents, subcontractors, consultants, or employees, WENGER CORP shall not be deemed in breach of its obligations under the Agreement or otherwise liable for any costs, charges, or losses sustained or incurred by Buyer, in each case, to the extent arising directly or indirectly from such prevention or delay.

**Price; Payment Terms:** All prices are FOB shipping point, unless otherwise stated or referenced. Prices may be subject to change without notice. Instruments and accessories displayed with Goods throughout WENGER CORP’S catalog shall be priced separately.

Buyer shall pay WENGER CORP the purchase price as set forth in the respective order between WENGER CORP and Buyer. All prices are in U.S. Dollars and are exclusive of all freight, storage, insurance, sales, use, and excise taxes, import taxes and duties, and any other similar charges of any kind imposed by any governmental authority. Unless otherwise agreed to in writing between WENGER CORP and Buyer, Buyer shall be re-responsible for all such charges, costs, and taxes. If WENGER CORP is required to pay any such charges, costs, and taxes, Buyer shall immediately reimburse WENGER CORP upon notice from WENGER CORP of same.

All payments are due within approved credit terms. The credit terms granted on each order are subject to WENGER CORP’S continuing approval of Buyer’s credit. WENGER CORP may withdraw the extension of credit and require modified payment terms if, in WENGER CORP’S sole judgment, Buyer’s credit or financial standing is impaired such that WENGER CORP in good faith deems payment insecure.



# TERMS AND CONDITIONS

---

Buyer shall make all payments in immediately available funds and in U.S. Dollars. Buyer may be charged the lower of 1.5% interest per month or the maximum legal rate, calculated daily and compounded monthly, on all amounts not received by the due date. Buyer shall reimburse WENGER CORP for all costs or charges, including reasonable attorneys' fees, incurred by WENGER CORP in the collection of any past due amounts from Buyer. In addition to any other remedies available under these Terms and Conditions or at law, WENGER CORP shall be entitled to defer performance hereunder until such default is resolved.

**Changes and Cancellations:** Buyer may request in writing changes or additions to the Goods consistent with WENGER CORP'S specifications and criteria. In the event such changes or additions are accepted by WENGER CORP, WENGER CORP shall have the absolute right to revise the prices and dates of delivery, and to add charges for work and materials rendered unnecessary by such changes or additions. In the event Buyer requests the changes within 15 days of shipment, a 25% fee may apply.

Buyer may at any time cancel all or any part of the Goods by written notice to WENGER CORP. Upon termination, Buyer will pay WENGER CORP an amount equal to the sum of: (a) the price for that portion of the Goods furnished, accepted, and delivered prior to cancellation; plus (b) 25% of the cost of any non-custom Goods subject to the Agreement but not yet delivered; and (c) 100% of the cost of any custom Goods subject to the Agreement but not yet delivered; provided, however, that in no event will the amount paid by Buyer exceed the total purchase price under the Agreement, less any payments previously made.

**Return Policy:** WENGER CORP must approve in writing any and all returns and will only accept Goods returned within six months from the date of manufacture, un-used, and current production models. All authorized returns are subject to a minimum 20% restocking/rehandling fee. Buyer must obtain from WENGER CORP a Returned Material Authorization ("RMA") number for any Goods Buyer wishes to return for credit. Buyer is responsible for payment of return shipping fees unless such returned Goods result from a WENGER CORP order processing error. WENGER CORP will not accept returns for Goods that are custom-built or installed for Buyer, as such items cannot be resold by WENGER CORP.

**Warranty and Disclaimer:** The terms and conditions of WENGER CORP'S warranty with respect to the Goods is available at: [https://www.wengercorp.com/Lit/Wenger\\_Product%20Warranty.pdf](https://www.wengercorp.com/Lit/Wenger_Product%20Warranty.pdf).

WENGER CORP MAKES NO OTHER WARRANTY, EXPRESS OR IMPLIED, EXCEPT AS IS SPECIFICALLY SET FORTH IN THESE TERMS AND CONDITIONS. WENGER CORP EXPRESSLY DISCLAIMS ALL OTHER WARRANTIES, INCLUDING, BUT NOT LIMITED TO, IMPLIED WARRANTIES OF MERCHANTABILITY AND FITNESS FOR A PARTICULAR PURPOSE.

**Limitations of Liability.** IN NO EVENT SHALL WENGER CORP BE RESPONSIBLE FOR ANY LOSSES ARISING OUT OF OR RELATED TO THIS AGREEMENT, OTHER THAN DIRECT LOSSES ARISING SOLELY AS A RESULT OF WENGER CORP'S GROSS NEGLIGENCE OR WILLFUL MISCONDUCT. ACCORDINGLY, IN NO EVENT SHALL WENGER CORP BE REQUIRED TO PAY OR BE LIABLE TO BUYER OR ANY THIRD PARTY FOR ANY INCIDENTAL, CONSEQUENTIAL, SPECIAL, INDIRECT, EXEMPLARY, OR PUNITIVE DAMAGES, OPPORTUNITY COSTS, LOSS OF USE, OR LOST PROFITS, REGARDLESS OF WHETHER SUCH DAMAGES WERE FORESEEABLE AND WHETHER OR NOT THE PARTY HAS BEEN ADVISED OF THE POSSIBILITY OF SUCH DAMAGES, AND NOTWITHSTANDING THE FAILURE OF ANY AGREED OR OTHER REMEDY OF ITS ESSENTIAL PURPOSE. IN NO EVENT SHALL WENGER CORP'S TOTAL LIABILITY ARISING OUT OF OR RELATED TO THIS AGREEMENT EXCEED THE AMOUNT PAID BY BUYER TO WENGER CORP FOR THE GOODS.

**Compliance with Law:** Buyer shall comply with all applicable laws, regulations, and ordinances. Buyer shall maintain in effect all licenses, permissions, authorizations, consents, and permits necessary to carry out its obligations under the Agreement. Buyer shall comply with all applicable import and export laws, regulations, orders, and requirements of all countries involved in the sale of the Goods; provided, however, that WENGER CORP shall obtain any applicable export approvals and pay any customs duties, taxes, and other fees as may be required by the U.S. government in connection therewith. Unless otherwise expressly agreed in writing by WENGER CORP, any and all customs, duties, taxes, and other fees in any form which may be charged or assessed with respect to the importation into any foreign country of any Goods or technical data related thereto shall be for the account of and paid for by Buyer. WENGER CORP may terminate the Agreement if any governmental authority imposes anti-dumping or countervailing duties or any other duties or penalties on the Goods.

**Termination:** In addition to any remedies that may be provided under these Terms and Conditions, WENGER CORP may terminate the Agreement with immediate effect upon written notice to Buyer, if Buyer: (a) fails to pay any amount when due under the Agreement; (b) has not otherwise performed or complied with any of these Terms and Conditions, in whole or in part; or (c) becomes insolvent, files a petition for bankruptcy or commences or has commenced against it proceedings relating to bankruptcy, receivership, reorganization, or assignment for the benefit of creditors.

**Intellectual Property:** All intellectual property rights, including copyrights, patents, patent disclosures and inventions (whether patentable or not), trademarks, service marks, trade secrets, know-how and other confidential information, trade dress, trade names, logos, corporate names, and domain names, together with all of the goodwill associated therewith, derivative works and all other rights (collectively, "IP Rights") in and to the Goods (other than intellectual property provided by Buyer or a third party) shall be owned by WENGER CORP. Following Buyer's acceptance and final payment, WENGER CORP shall grant to Buyer a non-exclusive, non-transferable, non-sublicensable license to use the IP Rights solely to the extent necessary to enable Buyer to operate, maintain, and repair the Goods pursuant to the terms of the Agreement and any applicable end user agreement(s).

**Confidential Information:** All non-public, confidential or proprietary information of WENGER CORP, including, but not limited to, specifications, samples, patterns, designs, plans, drawings, documents, data, business operations, customer lists, pricing, discounts, or rebates, disclosed by WENGER CORP to Buyer, whether disclosed orally or disclosed or accessed in written, electronic or other form or media, and whether or not marked, designated, or otherwise identified as "confidential" in connection with the Agreement, is confidential, solely for the use of performing the Agreement, and may not be disclosed or copied unless authorized in advance by WENGER CORP in writing. Upon WENGER CORP'S request, Buyer shall promptly return all documents and other materials received from WENGER CORP. WENGER CORP shall be entitled to injunctive relief for any violation of this paragraph. This paragraph does not apply to information that is: (a) in the public domain; (b) known to Buyer at the time of disclosure; or (c) rightfully obtained by Buyer on a non-confidential basis from a third party.

**Force Majeure:** WENGER CORP shall not be liable or responsible to Buyer, nor be deemed to have defaulted under or breached the Agreement, for any failure or delay in fulfilling or performing any term of the Agreement, when and to the extent such failure or delay is caused by or results (directly or indirectly) from acts beyond WENGER CORP'S reasonable control, including, without limitation: (a) acts of God; (b) flood, fire, earthquake, explosion, or natural disasters; (c) war, invasion, hostilities (whether war is declared or not), cyber-attacks, sabotage, terrorist threats or acts, riot or other civil unrest; (d) foreign or domestic government order, law, or actions; (e) actions, embargoes or blockades in effect on or after the date of the Agreement; (f) action by any governmental authority; (g) national or regional emergency; (h) public health emergencies; (i) strikes, labor stoppages or slowdowns or other industrial services (provided WENGER CORP has exercised commercially reasonable efforts to avoid it); (j) failures of utilities or public services; (k) sub-supplier delays caused by any of the above provided the same are not caused or contributed to by the negligence or fault of WENGER CORP; or (l) any other cause beyond the reasonable control of WENGER CORP.

**Applicable Law and Forum:** Any disputes between Buyer and WENGER CORP shall be in the state and federal courts of Steele County, Minnesota or the county and state in which the project is located, as mutually agreed to in writing by the parties. Buyer agrees to submit to such jurisdiction and agrees that the dispute shall be governed by and construed in accordance with the laws of the State of Minnesota or the county and state in which the project is located, as mutually agreed to in writing by the parties, without giving effect to any choice or conflict of law provision or rule.

**Miscellaneous:** No amendment to the Agreement or waiver of the rights or obligations of either party shall be effective unless in writing signed by the parties. Any provision of the Agreement that by its express terms or by its nature is intended to survive the expiration or termination of the Agreement will survive any such expiration or termination, including, without limitation, paragraphs "Warranty and Disclaimer," "Limitations of Liability," "Compliance with Law," "Intellectual Property," "Confidential Information," "Applicable Law and Forum," and "Miscellaneous."

If any provision of the Agreement is held invalid or unenforceable by any court of competent jurisdiction, the other provisions of the Agreement will remain in full force and effect. Any provision of the Agreement held invalid or unenforceable only in part or degree will remain in full force and effect to the extent not held invalid or unenforceable. A party's failure to insist on compliance or enforcement of any provision in the Agreement will not affect its validity or enforceability or constitute a waiver of future enforcement of that provision or any other provision in the Agreement. Unless otherwise set forth in the Agreement, the Agreement will be binding upon and inure to the benefit of the parties and their respective heirs, executors, administrators, successors, and assigns. The parties are independent contractors, and nothing in the Agreement or otherwise will be deemed or construed to create any other relationship, including one of employment, joint venture, or agency.



# Wenger®

C O R P O R A T I O N

Wenger

CLANCY



GEARBOSS™

creative  
conners



ENRICHING LIVES BY ENABLING AND INSPIRING GREAT PERFORMANCES.

Phone: 1.800.493.6437 | Intl Phone: 1.507.455.4100 | [wengercorp.com](http://wengercorp.com)

555 Park Drive, Owatonna, MN 55060-0448