

PowerAssist[®]

Counterweight Automation System



A compact fixed speed hoist that automates a new or existing counterweight rigging set. The hoist and counterweight work together, allowing the set to carry any load from none to the 2,000 lb. (907 kg) without the need to adjust counterweights.

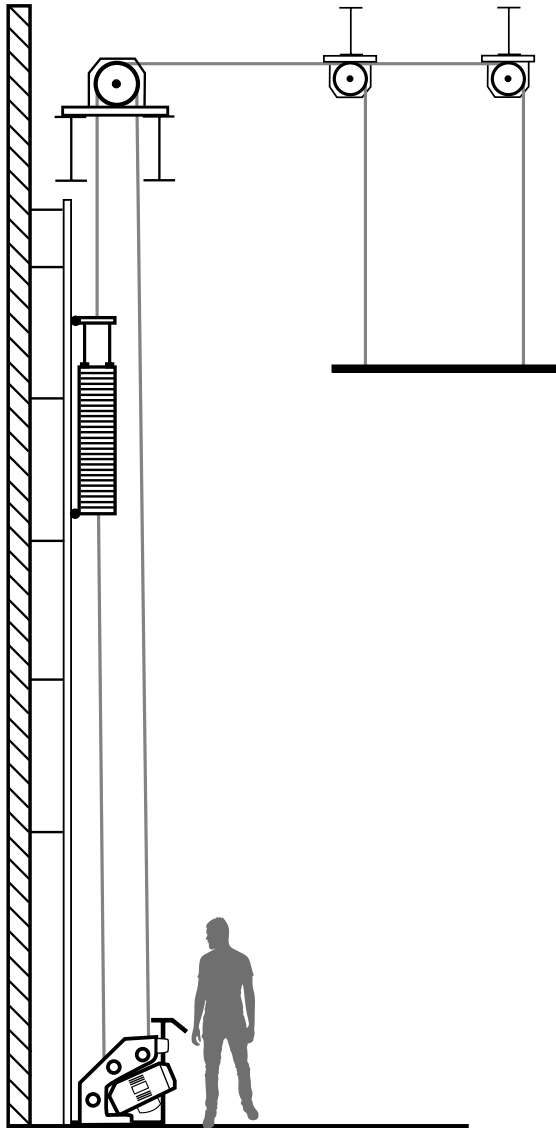
Capability

- Speed: 25 fpm (0.13 m/s)
- Travel: Varies based on facility size
- Gross Capacity: Up to 2,000 lb (907 kg)

Features

- Easily convert your counterweight set to a motorized system
- Perfect for retrofit OR new construction
- Spend less time loading and unloading counterweights
- A safer way to raise and lower sets
- Up to 2,000 lb (907 kg) set capacity
- Protect equipment with a safe, consistent 25 fpm (0.13 m/s) speed

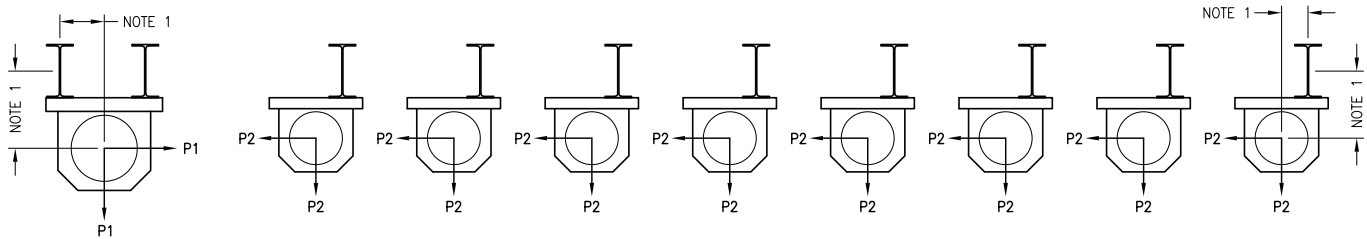




▼

Product CAD files and other documents available for download on our website.

www.jrclancy.com/powerassist



LOADING NOTES:

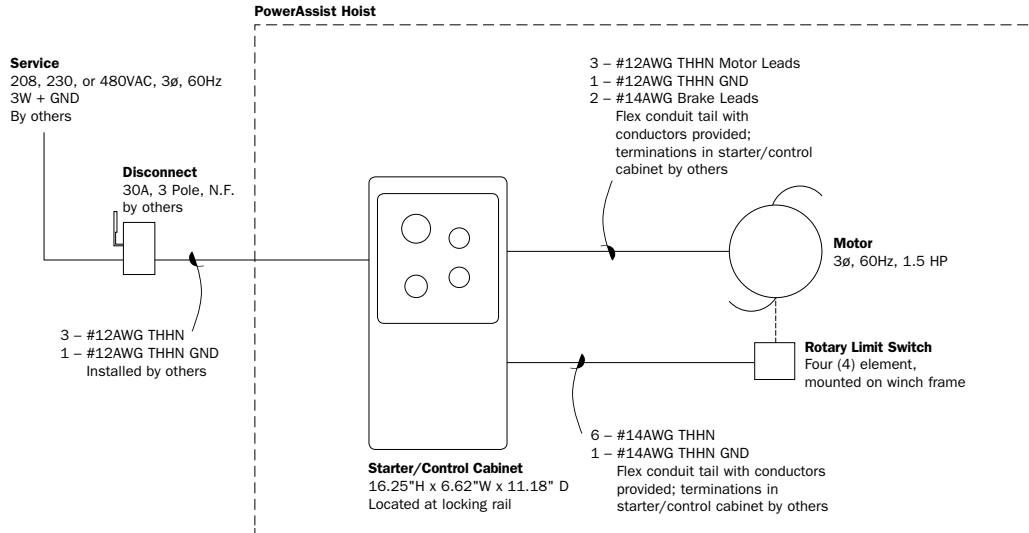
P1 (HEAD BLOCK LINE LOAD) = 0 TO 2000 LB (0-907 kg)
 P2 (LOFT BLOCK LINE LOAD) = 0 TO 750 LB (0-340 kg)

1. ALL BLOCK LOADS ACT AT THE BLOCK SHAFT. THE HORIZONTAL AND VERTICAL OFFSET BETWEEN THE BLOCK SHAFT AND SUPPORTING BEAM CENTROID MAY RESULT IN TORSIONAL LOADS ON BEAM.
2. SET CAPACITY = SEE TABLE 1T
3. LIVE LOAD CAPACITY = SET CAPACITY - BATTEN WEIGHT
4. TOTAL LINE LOAD ON ALL LOFT BLOCKS NOT TO EXCEED SET CAPACITY.
5. LINE LOAD ON EACH LOFT BLOCK NOT TO EXCEED LOFT BLOCK CAPACITY (P2).
6. HOIST LOAD = 1000 LBS (454 kg)

TABLE 1				
HOIST TRAVEL	HOIST VOLTAGE	SPEED	HOIST CAPACITY	SET CAPACITY
0-90' 0-27584 mm	208V, 3PH	25 fpm .13 m/s	1000 lb 454 kg	0-2000 lb 907 kg
	480V, 3PH			
	380V, 3PH (50Hz)	21 fpm .11 m/s		

* CALL FOR OTHER POWER OPTIONS
 DP SYSTEM AVAILABLE - SEE DWG #PA-1

PowerAssist with Push Button Control One Line Riser — Typical



Order Information

Model	Control	Type	Speed	Capacity	Weight	HP	Current Draw		
							208 V	380 V	480 V
018-PA	Push Button Station	Single Purchase	25 fpm (0.13 m/s)	2,000 lb (907 kg)	350 lb (159 kg)	1.5 (1.12 kW)	5.8 A	3.3 A	2.7 A
018-PADP		Double Purchase							



© 2018 Wenger Corporation
USA/2018-03/W

